



AZ-101^{Q&As}

Microsoft Azure Integration and Security

Pass Microsoft AZ-101 Exam with 100% Guarantee

Free Download Real Questions & Answers **PDF** and **VCE** file from:

<https://www.pass4itsure.com/az-101.html>

100% Passing Guarantee
100% Money Back Assurance

Following Questions and Answers are all new published by Microsoft
Official Exam Center

-  **Instant Download** After Purchase
-  **100% Money Back** Guarantee
-  **365 Days** Free Update
-  **800,000+** Satisfied Customers





QUESTION 1

You plan to grant the member of a new Azure AD group named corp 75099086 the right to delegate administrative access to any resource in the resource group named 7509086.

You need to create the Azure AD group and then to assign the correct to e to the group. The solution must use the principle of least privilege and minimize the number of role assignments.

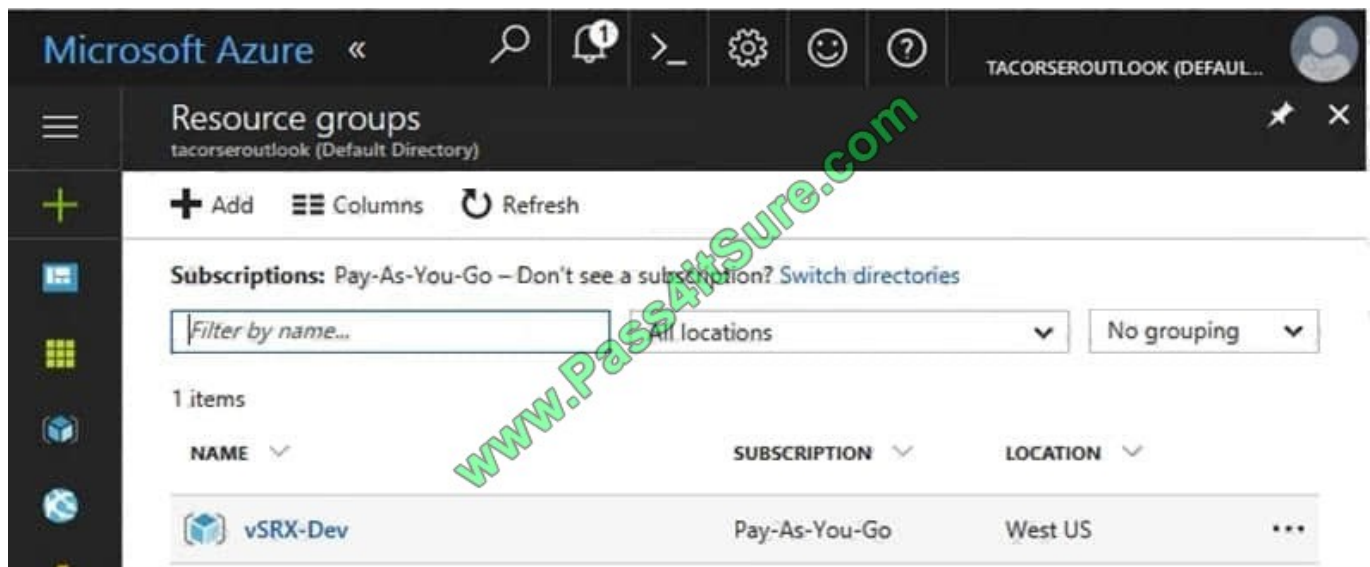
What should you do from the Azure portal?

A. Check the answer in explanantion.

Correct Answer: A

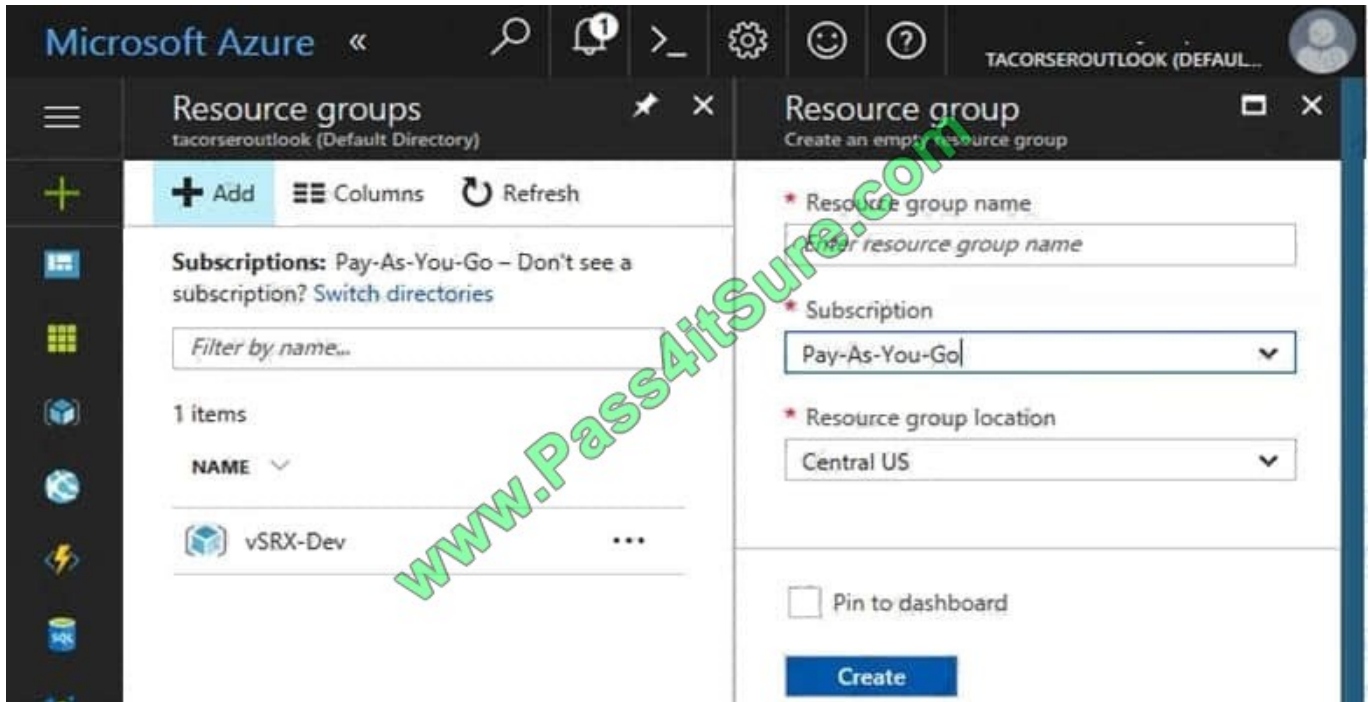
See below.

Step 1: Click Resource groups from the menu of services to access the Resource Groups blade



Step 2:

Click Add (+) to create a new resource group. The Create Resource Group blade appears. Enter corp7509086 as the Resource group name, and click the Create button.



Step 3:

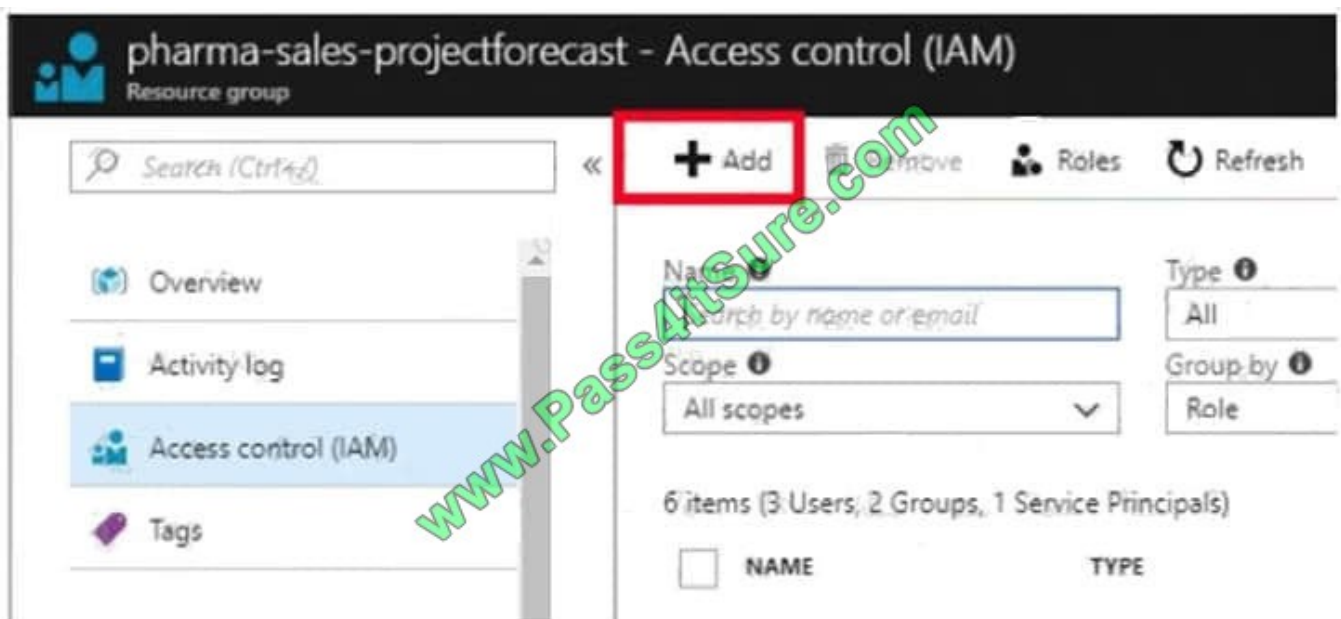
Select Create.

Your group is created and ready for you to add members.

Now we need to assign a role to this resource group scope.

Step 4:

Choose the newly created Resource group, and Access control (IAM) to see the current list of role assignments at the resource group scope. Click +Add to open the Add permissions pane.





Step 5:

In the Role drop-down list, select a role Delegate administration, and select Assign access to: resource group corp7509086

The screenshot shows the 'Add permissions' dialog box. It has a title bar with 'Add permissions' and a close button. Below the title bar, there are three sections: 'Role' with a dropdown menu showing 'Select a role'; 'Assign access to' with a dropdown menu showing 'Azure AD user, group, or application'; and 'Select' with a search input field containing 'Search by name or email address' and a green checkmark icon. A large green watermark 'www.Pass4itSure.com' is overlaid diagonally across the form.

References:

<https://docs.microsoft.com/en-us/azure/role-based-access-control/role-assignments-portal> https://www.juniper.net/documentation/en_US/vsrx/topics/task/multi-task/security-vsrx-azure-marketplace-resource-group.html

QUESTION 2

You have an Azure subscription named Subscription1.

In Subscription1, you create an Azure web app named WebApp1. WebApp1 will access an external service that requires certificate authentication.

You plan to require the use of HTTPS to access WebApp1.

You need to upload certificates to WebApp1.

In which formats should you upload the certificate? To answer, select the appropriate options in the answer area.

NOTE: Each correct selection is worth one point.

Hot Area:



Answer Area

Certificate format for HTTPS access:

▼
CER
CRL
CRT
PFX

Certificate format for external service access:

▼
CER
CRL
CRT
PFX

Correct Answer:

Answer Area

Certificate format for HTTPS access:

▼
CER
CRL
CRT
PFX

Certificate format for external service access:

▼
CER
CRL
CRT
PFX

A PFX file contains the public key file (SSL Certificate) and its unique private key file. This is required for HTTPS access. The web app will distribute the public key (in a CER file) to clients that connect to the web app. The CER file is an SSL Certificate which has the public key of the external service. The external service will have the private key associated with the public key contained in the CER file.

QUESTION 3



Note: This question is part of a series of questions that present the same scenario. Each question in the series contains a unique solution that might meet the stated goals. Some question sets might have more than one correct solution, while

others might not have a correct solution.

After you answer a question in this section, you will NOT be able to return to it. As a result, these questions will not appear in the review screen.

You manage a virtual network named VNet1 that is hosted in the West US Azure region.

VNet1 hosts two virtual machines named VM1 and VM2 that run Windows Server.

You need to inspect all the network traffic from VM1 to VM2 for a period of three hours.

Solution: From Azure Network Watcher, you create a packet capture.

Does this meet the goal?

A. Yes

B. No

Correct Answer: A

Azure Network Watcher provides tools to monitor, diagnose, view metrics, and enable or disable logs for resources in an Azure virtual network.

Capture packets to and from a VM

Advanced filtering options and fine-tuned controls, such as the ability to set time and size limitations, provide versatility. The capture can be stored in Azure Storage, on the VM's disk, or both. You can then analyze the capture file using

several standard network capture analysis tools.

Network Watcher variable packet capture allows you to create packet capture sessions to track traffic to and from a virtual machine. Packet capture helps to diagnose network anomalies both reactively and proactively.

References:

<https://docs.microsoft.com/en-us/azure/network-watcher/network-watcher-monitoring-overview>

QUESTION 4

Your Azure environment contains an application gateway and custom apps.

Another administrator modifies the application gateway and the apps to use HTTP over TCP port 8080.

Users report that they can no longer connect to the apps.

You suspect that the cause of the issue is a change in the configuration of the application gateway.

You need to modify the application gateway to resolve the issue.

What should you do from the Azure portal?



A. Check the answer in explanation.

Correct Answer: A

See below.

Step 1:

Select Networking and then select Application Gateway in the Featured list, and select the application gateway, and select the settings.

Step 2:

Click HTTP for the protocol of the listener and make sure that the port is defined as 443.

References:

<https://docs.microsoft.com/en-us/azure/application-gateway/create-ssl-portal>

QUESTION 5

You have an Azure App Service plan named AdatumASP1 that hosts several Azure web apps.

You discover that the web apps respond slowly.

You need to provide additional memory and CPU resources to each instance of the web app.

What should you do?

- A. Scale out AdatumASP1.
- B. Add continuous WebJobs that use the multi-instance scale.
- C. Scale up AdatumASP1.
- D. Add a virtual machine scale set.

Correct Answer: C

References: <https://github.com/MicrosoftDocs/azure-docs/blob/master/articles/app-service/web-sites-scale.md>

[Latest AZ-101 Dumps](#)

[AZ-101 PDF Dumps](#)

[AZ-101 Braindumps](#)



To Read the [Whole Q&As](#), please purchase the [Complete Version](#) from [Our website](#).

Try our product !

100% Guaranteed Success

100% Money Back Guarantee

365 Days Free Update

Instant Download After Purchase

24x7 Customer Support

Average 99.9% Success Rate

More than 800,000 Satisfied Customers Worldwide

Multi-Platform capabilities - [Windows](#), [Mac](#), [Android](#), [iPhone](#), [iPod](#), [iPad](#), [Kindle](#)

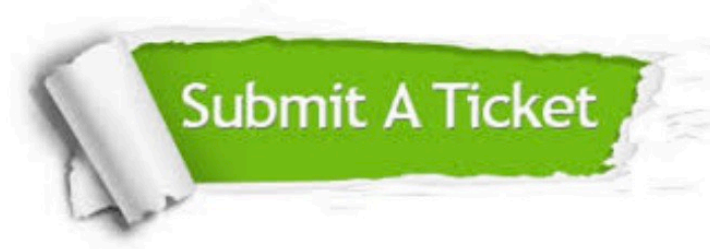
We provide exam PDF and VCE of Cisco, Microsoft, IBM, CompTIA, Oracle and other IT Certifications. You can view Vendor list of All Certification Exams offered:

<https://www.pass4itsure.com/allproducts>

Need Help

Please provide as much detail as possible so we can best assist you.

To update a previously submitted ticket:



 <p>One Year Free Update Free update is available within One Year after your purchase. After One Year, you will get 50% discounts for updating. And we are proud to boast a 24/7 efficient Customer Support system via Email.</p>	 <p>Money Back Guarantee To ensure that you are spending on quality products, we provide 100% money back guarantee for 30 days from the date of purchase.</p>	 <p>Security & Privacy We respect customer privacy. We use McAfee's security service to provide you with utmost security for your personal information & peace of mind.</p>
---	---	--

Any charges made through this site will appear as Global Simulators Limited.

All trademarks are the property of their respective owners.

Copyright © pass4itsure, All Rights Reserved.