



# AZ-101<sup>Q&As</sup>

Microsoft Azure Integration and Security

**Pass Microsoft AZ-101 Exam with 100% Guarantee**

Free Download Real Questions & Answers **PDF** and **VCE** file from:

<https://www.pass4itsure.com/az-101.html>

100% Passing Guarantee  
100% Money Back Assurance

Following Questions and Answers are all new published by Microsoft  
Official Exam Center

-  **Instant Download** After Purchase
-  **100% Money Back** Guarantee
-  **365 Days** Free Update
-  **800,000+** Satisfied Customers





### QUESTION 1

You have an on-premises data center and an Azure subscription. The data center contains two VPN devices.

The subscription contains an Azure virtual network named VNet1. VNet1 contains a gateway subnet.

You need to create a site-to-site VPN. The solution must ensure that if a single instance of an Azure VPN gateway fails, or a single on-premises VPN device fails, the failure will not cause an interruption that is longer than two minutes.

What is the minimum number of public IP addresses, virtual network gateways, and local network gateways required in Azure? To answer, select the appropriate options in the answer area.

NOTE: Each correct selection is worth one point.

Hot Area:

Public IP addresses:

Virtual network gateways:

Local network gateways:

Correct Answer:

Public IP addresses:

Virtual network gateways:

Local network gateways:

### QUESTION 2

Your company recently hired a user named janet-7509087@ExamUsers.com.



You need to ensure that janet-7509087@ ExamUsers.com can connect to load balancer named Web-LAB. The solution must ensure that janet-7509087@ ExamUsers.com can modify the backend pools.

What should you do from the Azure portal?

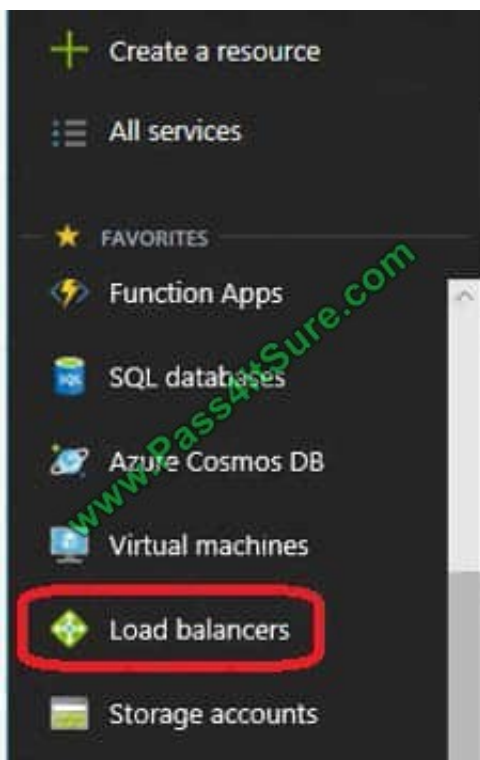
A. Check the answer in explanation.

Correct Answer: A

See below.

Step 1:

In the navigation list, choose Load Balancer.



Step 2:

Locate the load balancer named Web-ALB, and click the Access icon.

Step3:

In the Users blade, click Roles. In the Roles blade, click Add to add permissions for the user Janet-7509087@ExamUsers.com.

Step 4:

Add permission to modify backend pools

References:

<https://docs.microsoft.com/en-us/azure/azure-stack/azure-stack-manage-permissions>



### QUESTION 3

You plan to connect a virtual network named VNET1017 to your on-premises network by using both an Azure ExpressRoute and a site-to-site VPN connection. You need to prepare the Azure environment for the planned deployment. The solution must maximize the IP address space available to Azure virtual machines. What should you do from the Azure portal before you create the ExpressRoute or the VPN gateway?

A. Check the answer in explanation.

Correct Answer: A

See below.

We need to create a Gateway subnet

Step 1:

Go to More Services > Virtual Networks

Step 2:

Then click on the VNET1017, and click on subnets. Then click on gateway subnet.

Step 3:

In the next window define the subnet for the gateway and click OK. It is recommended to use /28 or /27 for gateway subnet.

As we want to maximize the IP address space we should use /27.

References:

<https://blogs.technet.microsoft.com/canitpro/2017/06/28/step-by-step-configuring-a-site-to-site-vpn-gateway-between-azure-and-on-premise/> Topic 8, Mix Questions Set E (Security Identities)

---

### QUESTION 4

You have an Azure subscription that contains the following resources:

- a virtual network named VNet1
- a replication policy named RepIPolicy1
- a Recovery Services vault named Vault1
- an Azure Storage account named Storage1

You have an Amazon Web Services (AWS) EC2 virtual machine named VM1 that runs Windows Server.

You need to migrate VM1 to VNet1 by using Azure Site Recovery.

Which three actions should you perform in sequence? To answer, move the appropriate actions from the list of actions to the answer area and arrange them in the correct order.



Select and Place:

**Actions**

- Install Azure Site Recovery Unified Setup.
- Create an Azure Migrate project.
- Enable Windows PowerShell remoting on VM1.
- Deploy an EC2 virtual machine as a configuration server.
- Enable replication for VM1.

Answer Area


Correct Answer:

**Actions**

- Create an Azure Migrate project.
- Enable Windows PowerShell remoting on VM1.

Answer Area

Deploy an EC2 virtual machine as a configuration server.
Install Azure Site Recovery Unified Setup.
Enable replication for VM1.

Step 1: Deploy an EC2 virtual machine as a configuration server

Prepare source include:

Use an EC2 instance that's running Windows Server 2012 R2 to create a configuration server and register it with your recovery vault.



Configure the proxy on the EC2 instance VM you're using as the configuration server so that it can access the service URLs.

Step 2: Install Azure Site Recovery Unified Setup.

Download Microsoft Azure Site Recovery Unified Setup. You can download it to your local machine and then copy it to the VM you're using as the configuration server.

Step 3: Enable replication for VM1.

Enable replication for each VM that you want to migrate. When replication is enabled, Site Recovery automatically installs the Mobility service.

References:

<https://docs.microsoft.com/en-us/azure/site-recovery/migrate-tutorial-aws-azure>

---

## QUESTION 5

Note: This question is part of a series of questions that present the same scenario. Each question in the series contains a unique solution that might meet the stated goals. Some question sets might have more than one correct solution, while

others might not have a correct solution.

After you answer a question in this section, you will NOT be able to return to it. As a result, these questions will not appear in the review screen.

You manage a virtual network named VNet1 that is hosted in the West US Azure region.

VNet1 hosts two virtual machines named VM1 and VM2 that run Windows Server.

You need to inspect all the network traffic from VM1 to VM2 for a period of three hours.

Solution: From Performance Monitor, you create a Data Collector Set (DCS).

Does this meet the goal?

A. Yes

B. No

Correct Answer: B

You should use Azure Network Watcher.

References: <https://docs.microsoft.com/en-us/azure/network-watcher/network-watcher-monitoring-overview>

[Latest AZ-101 Dumps](#)

[AZ-101 PDF Dumps](#)

[AZ-101 Braindumps](#)





To Read the [Whole Q&As](#), please purchase the [Complete Version](#) from [Our website](#).

## Try our product !

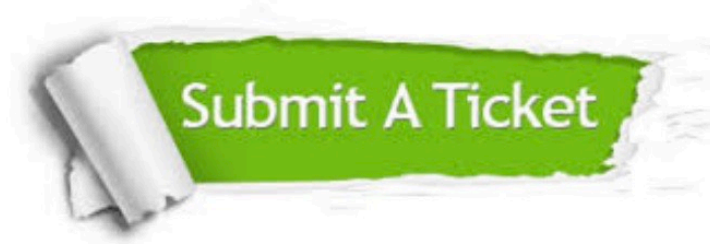
100% Guaranteed Success  
100% Money Back Guarantee  
365 Days Free Update  
Instant Download After Purchase  
24x7 Customer Support  
Average 99.9% Success Rate  
More than 800,000 Satisfied Customers Worldwide  
Multi-Platform capabilities - [Windows](#), [Mac](#), [Android](#), [iPhone](#), [iPod](#), [iPad](#), [Kindle](#)

We provide exam PDF and VCE of Cisco, Microsoft, IBM, CompTIA, Oracle and other IT Certifications. You can view Vendor list of All Certification Exams offered:

<https://www.pass4itsure.com/allproducts>

## Need Help

Please provide as much detail as possible so we can best assist you.  
To update a previously submitted ticket:



 <p><b>One Year Free Update</b> Free update is available within One Year after your purchase. After One Year, you will get 50% discounts for updating. And we are proud to boast a 24/7 efficient Customer Support system via Email.</p>	 <p><b>Money Back Guarantee</b> To ensure that you are spending on quality products, we provide 100% money back guarantee for 30 days from the date of purchase.</p>	 <p><b>Security &amp; Privacy</b> We respect customer privacy. We use McAfee's security service to provide you with utmost security for your personal information &amp; peace of mind.</p>
---	---	--

Any charges made through this site will appear as Global Simulators Limited.  
All trademarks are the property of their respective owners.  
Copyright © pass4itsure, All Rights Reserved.