



ACMP_6.3^{Q&As}

Aruba Certified Mobility Professional 6.3

Pass Aruba ACMP_6.3 Exam with 100% Guarantee

Free Download Real Questions & Answers **PDF** and **VCE** file from:

<https://www.pass4itsure.com/acmp-6-3.html>

100% Passing Guarantee
100% Money Back Assurance

Following Questions and Answers are all new published by Aruba
Official Exam Center

- ⚙️ **Instant Download** After Purchase
- ⚙️ **100% Money Back** Guarantee
- ⚙️ **365 Days** Free Update
- ⚙️ **800,000+** Satisfied Customers



**QUESTION 1**

A Remote AP provisioned with an SSID in "Bridged" forwarding mode has which one of the following characteristics?

- A. The client obtains its IP address from the controller.
- B. The client's default gateway must be the controller.
- C. The client traffic is forwarded through a GRE tunnel to the controller.
- D. The client's default gateway may be the Access Point or a local gateway.
- E. The client's authentication must be 802.1X.

Correct Answer: D

QUESTION 2

A controller is provisioned in L3 Mode for Wireless Users. What must be configured on the controller to enable DHCP requests to an external DHCP server?

- A. an IP helper command
- B. the IP address of the DNS server
- C. the IP address of the APs
- D. the subnet address of the DHCP server
- E. the DHCP server IPSEC Key

Correct Answer: A

QUESTION 3

View the Server group screen shot above.

Server Group > CorporateServers Show Reference Save As Reset

Fail Through ☐

Servers					
Name	Server-Type	trim-FQDN	Match-Rule	Actions	
RadiusNY1	Radius	No		Edit	Delete ▲ ▼
RadiusMiami	Radius	No		Edit	Delete ▲ ▼
New					

Server Rules								
Priority	Attribute	Operation	Operand	Type	Action	Value	Validated	Actions
New								



A company has provisioned the same VAP, AAA and SSID profiles at both its Miami and NY offices. This Server Group is applied for 802.1x authentication at both locations. The user's credentials are only found in the Miami Radius server "RadiusMiami". There is no Radius synchronization and both servers are reachable. What happens when the user attempts to authenticate?

- A. The controller recognizes the users Domain and sends the authentication request directly to RadiusMiami.
- B. The request is initially sent to RadiusNY1 then RadiusNY1 redirects the controller to send the authentication request to RadiusMiami
- C. RadiusNY1 receives the request and returns a deny. No other action is taken.
- D. RadiusNY1 receives the request and returns a deny. The authentication request will then be sent to RadiusMiami.
- E. The RadiusNY1 sends the request to RadiusMiami that replies to the controller

Correct Answer: C

QUESTION 4

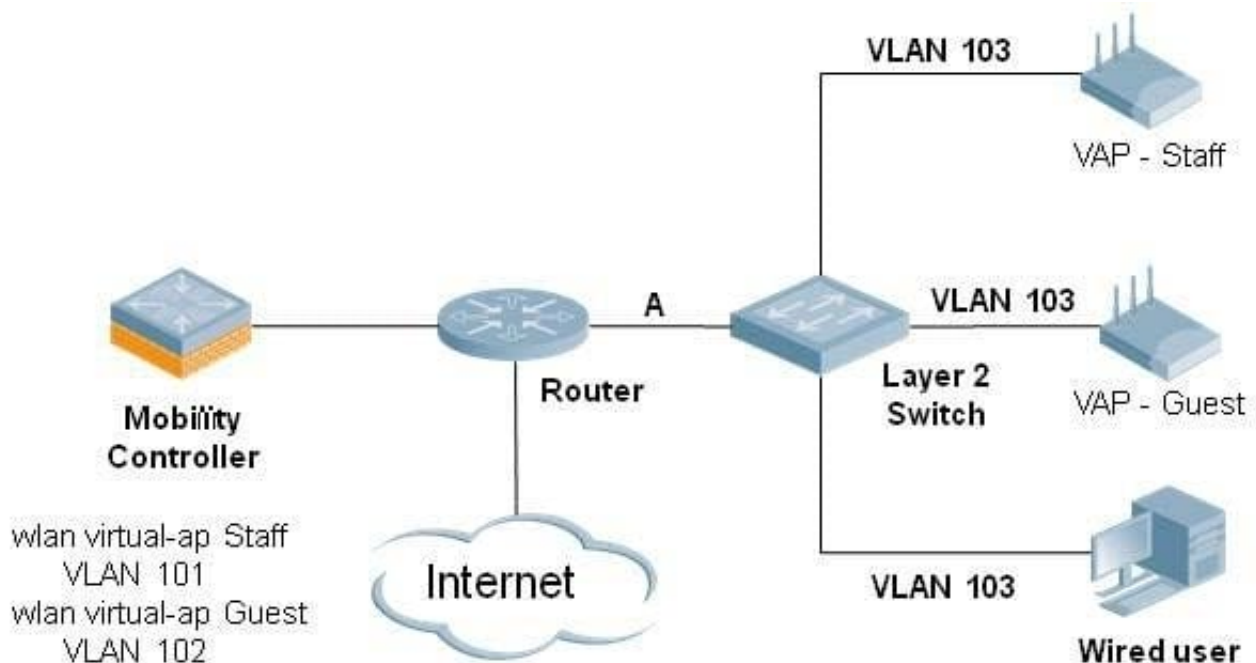
When deploying Remote Mesh Portals, what is one of the purposes of the Mesh Private VLAN?

- A. To separate wireless user traffic coming from mesh networks from non-mesh networks
- B. To tag mesh wireless user traffic on a particular AP
- C. To allow Mesh Points to form private vlan networks with certain users
- D. To tag control plane traffic from Mesh points to the controller
- E. To tag clients high priority traffic

Correct Answer: D

QUESTION 5

In the above diagram, the system shows two Aruba access points and a wired user.



Which VLAN(s) do NOT need to be configured on link A between the L2 switch and router to support the wireless users?

- A. 101 and 102
- B. 101 and 103
- C. 102 and 103
- D. only 101
- E. only 103

Correct Answer: A

[ACMP 6.3 PDF Dumps](#)

[ACMP 6.3 VCE Dumps](#)

[ACMP 6.3 Practice Test](#)