



ACMP_6.3^{Q&As}

Aruba Certified Mobility Professional 6.3

Pass Aruba ACMP_6.3 Exam with 100% Guarantee

Free Download Real Questions & Answers **PDF** and **VCE** file from:

<https://www.pass4itsure.com/acmp-6-3.html>

100% Passing Guarantee
100% Money Back Assurance

Following Questions and Answers are all new published by Aruba
Official Exam Center

- ⚙️ **Instant Download** After Purchase
- ⚙️ **100% Money Back** Guarantee
- ⚙️ **365 Days** Free Update
- ⚙️ **800,000+** Satisfied Customers



**QUESTION 1**

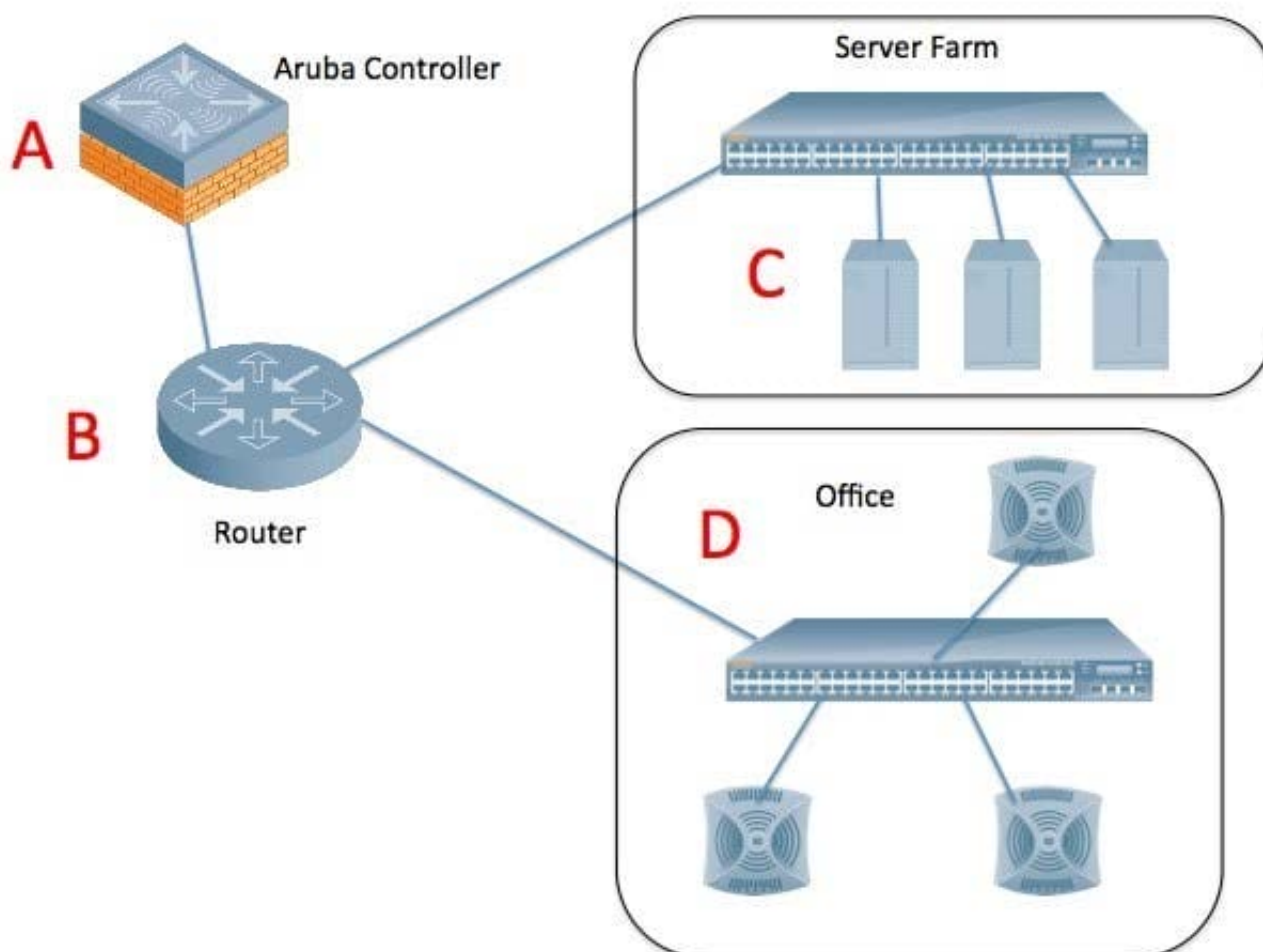
When configuring split tunnel mode on a Remote AP (RAP) where is the routing function for the split tunnel defined?

- A. On the IP routing tab in the configuration screen.
- B. On the AP provisioning screen.
- C. In the RAP static routing tables
- D. In the Firewall policy
- E. In the RAP whitelist

Correct Answer: D

QUESTION 2

Referring to the diagram provided for this question, representing an office wireless LAN deployment, there will be approximately 250 users in the offices section of the building. All Switches are setup as L3 routers.





According to Aruba best practice, which network device is the best choice for the wireless clients\' default gateway?

- A. device \\A\\
- B. device \\B\\
- C. device \\C\\
- D. device \\D\\
- E. device \\C or D\\

Correct Answer: B

QUESTION 3

IEEE 802.11r provides support for which of the following: A. radio measurements within a WLAN

- B. radio measurement within an ESS
- C. fast roaming within an ESS
- D. fast roaming within a BSS
- E. roaming across controllers

Correct Answer: C

QUESTION 4

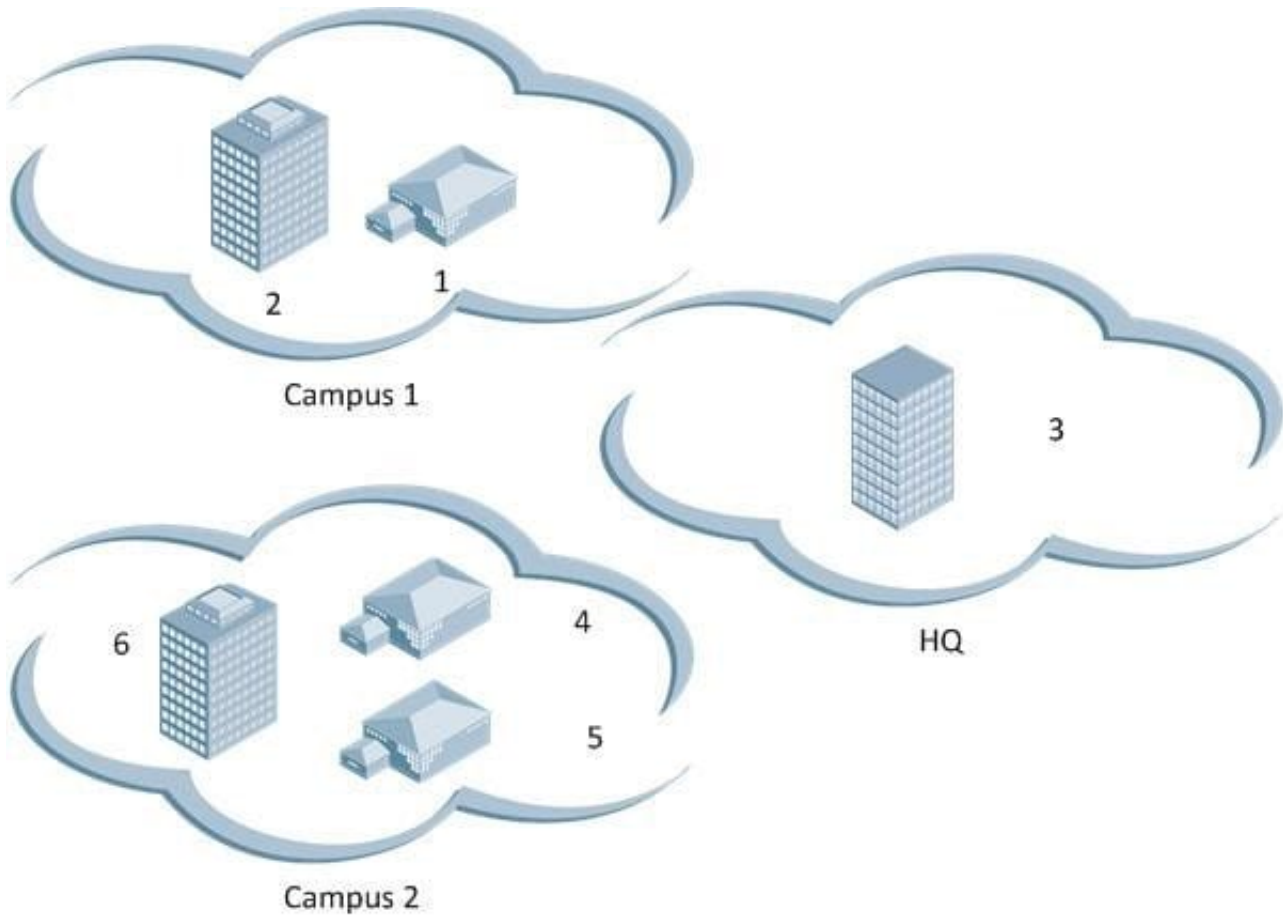
A port on a controller has been configured as untrusted. No wired access AAA profile or Global AAA profile is configured. When a user connects to that port which of the following statements is true?

- A. Since there is no wired access AAA profile, only port policies will be applied
- B. The user will fall into the default wired access AAA profile and will be given the initial role.
- C. Since there is no wired access AAA profile or Global AAA profile the user will be given the logon role.
- D. When configuring the port as untrusted, an error message of "no wired access AAA profile exists" Therefore this is an invalid configuration.
- E. the user is denied all access automatically because no wired access AAA or Global AAA profile is assigned.

Correct Answer: C

QUESTION 5

As illustrated in the above diagram, a company has two campus locations and a building headquarters all located in different cities.



Following best practices, what would be the best way to construct mobility domains for the company?

- A. Buildings (1, 2) in one domain and Buildings (3, 4, 5, 6) in one domain
- B. Buildings (1, 2) in one domain, Building (3) in one domain, and Buildings (4, 5, 6) in one domain
- C. Buildings (1, 2, 4, 5, 6) in one domain and Building (3) in one domain
- D. Buildings (1, 2, 3, 4, 5, 6) in one domain
- E. Buildings (1) in one domain building (4) in one domain

Correct Answer: B

[ACMP_6.3 PDF Dumps](#)

[ACMP_6.3 Study Guide](#)

[ACMP_6.3 Braindumps](#)