



A00-270^{Q&As}

SAS BI Content Development

Pass SASInstitute A00-270 Exam with 100% Guarantee

Free Download Real Questions & Answers **PDF** and **VCE** file from:

<https://www.pass4itsure.com/a00-270.html>

100% Passing Guarantee
100% Money Back Assurance

Following Questions and Answers are all new published by SASInstitute Official Exam Center

-  **Instant Download** After Purchase
-  **100% Money Back** Guarantee
-  **365 Days** Free Update
-  **800,000+** Satisfied Customers





QUESTION 1

Refer to the exhibit.

Delivery Method
Select the delivery method for the alert.

Alerts Portlet

E-mail alert subscribers

E-mail template: Default Template

Subject line:

Add a message to the e-mail.

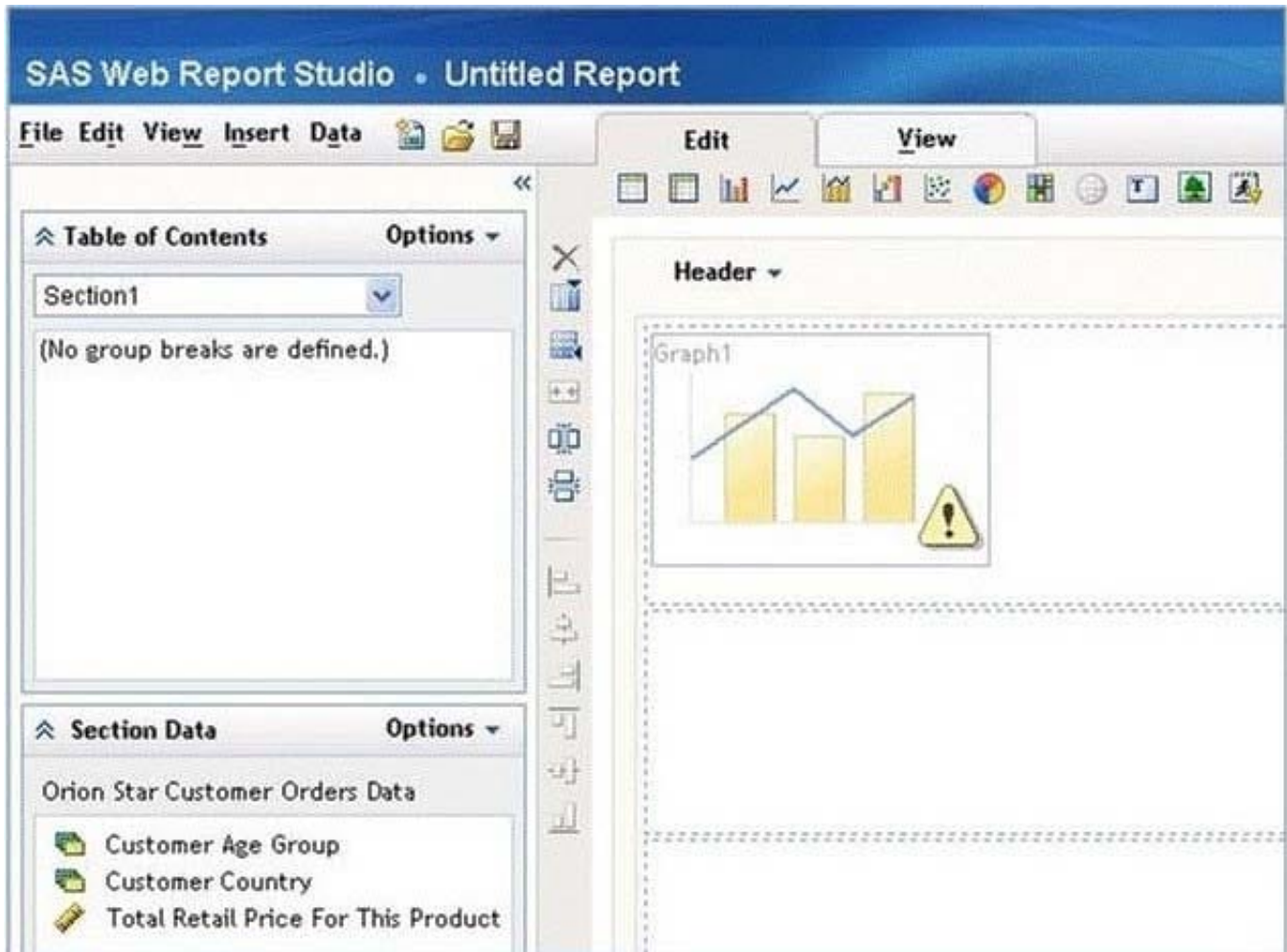
Which type of alert is being configured for the SAS BI Dashboard?

- A. Personal Alert
- B. Dashboard Alert
- C. Indicator Alert
- D. Data Alert

Correct Answer: C

QUESTION 2

Refer to the exhibit.



Why is there a warning icon in this bar-line chart in SAS Web Report Studio?

- A. There are empty cells with no report objects.
- B. The properties of the bar line chart have not been set.
- C. The report has not been saved.
- D. There are not enough measure data items.

Correct Answer: D

QUESTION 3

A stored process will be used to provide a dynamic data for an information map. The stored process must be defined to execute on the:

- A. Workspace server
- B. Content server
- C. Information map server



D. Stored process server

Correct Answer: B

QUESTION 4

A SAS Information Map is based on multiple relational tables.

Which statement is true regarding joins between them?

A. The default join created is a full outer join.

B. The default join is an inner join.

C. A Cartesian product is created by default.

D. Join conditions once created cannot be modified in an information map.

Correct Answer: B

QUESTION 5

In SAS Information Map Studio, how are cascading prompts created?

A. Create a compound filter with prompts and establish dependencies between prompts

B. Use the cascading prompt wizard located on the tools menu

C. Create individual filters and link them together on the relationships tab

D. Create individual prompted filters and establish dependencies between filters option

Correct Answer: D

[A00-270 PDF Dumps](#)

[A00-270 Practice Test](#)

[A00-270 Exam Questions](#)