



A00-270^{Q&As}

SAS BI Content Development

Pass SASInstitute A00-270 Exam with 100% Guarantee

Free Download Real Questions & Answers **PDF** and **VCE** file from:

<https://www.pass4itsure.com/a00-270.html>

100% Passing Guarantee
100% Money Back Assurance

Following Questions and Answers are all new published by SASInstitute Official Exam Center

-  **Instant Download** After Purchase
-  **100% Money Back** Guarantee
-  **365 Days** Free Update
-  **800,000+** Satisfied Customers



**QUESTION 1**

Refer to the exhibit.

The screenshot shows the 'Create New SAS Stored Process Wizard' dialog box. The title bar reads 'Create New SAS Stored Process Wizard'. The main area is titled '1 of 5 Name and Description' and includes the SAS logo. The 'Save stored process as:' section contains the following fields:

- Name:** A text box containing 'Stored Process'.
- Location:** A text box with a 'Browse...' button to its right. Below the text box is the example path: '(Example: /BIP Tree/My Folder Name)'. The text box is currently empty.
- Description:** A large, empty text area.
- Keywords (comma separated):** A text box that is currently empty.

At the bottom of the dialog, there are navigation buttons: '<Back', 'Next>', 'Finish', and 'Cancel'. A 'More (F1)...' link is also present in the bottom right corner.

A content developer is creating a stored process using the New SAS Stored Process Wizard in SAS Enterprise Guide.

Which information is contained in the location field?

- A. The location of the data source used by the stored process
- B. The location of the SAS Enterprise Guide Project
- C. The location of the metadata for the stored process
- D. The location of the output produced by the stored process

Correct Answer: C



QUESTION 2

A content developer has created a SAS report in SAS Enterprise Guide and wants it to be viewed in SAS Web Report Studio. How can this be accomplished?

- A. Publish to a publication channel.
- B. Export to .srx on the file system.
- C. Open the SAS Enterprise Guide project in SAS Web Report Studio.
- D. Publish to a report repository.

Correct Answer: D

QUESTION 3

Which statement is true about a cube with a drill through data source?

- A. The drill through data source remains in sync when performing an in-place update
- B. The drill through data source is updated by rerunning the PROC OLAP code
- C. The drill through data source can only be updated if flagged in the metadata
- D. The drill through data source is updated using a separate process

Correct Answer: B

QUESTION 4

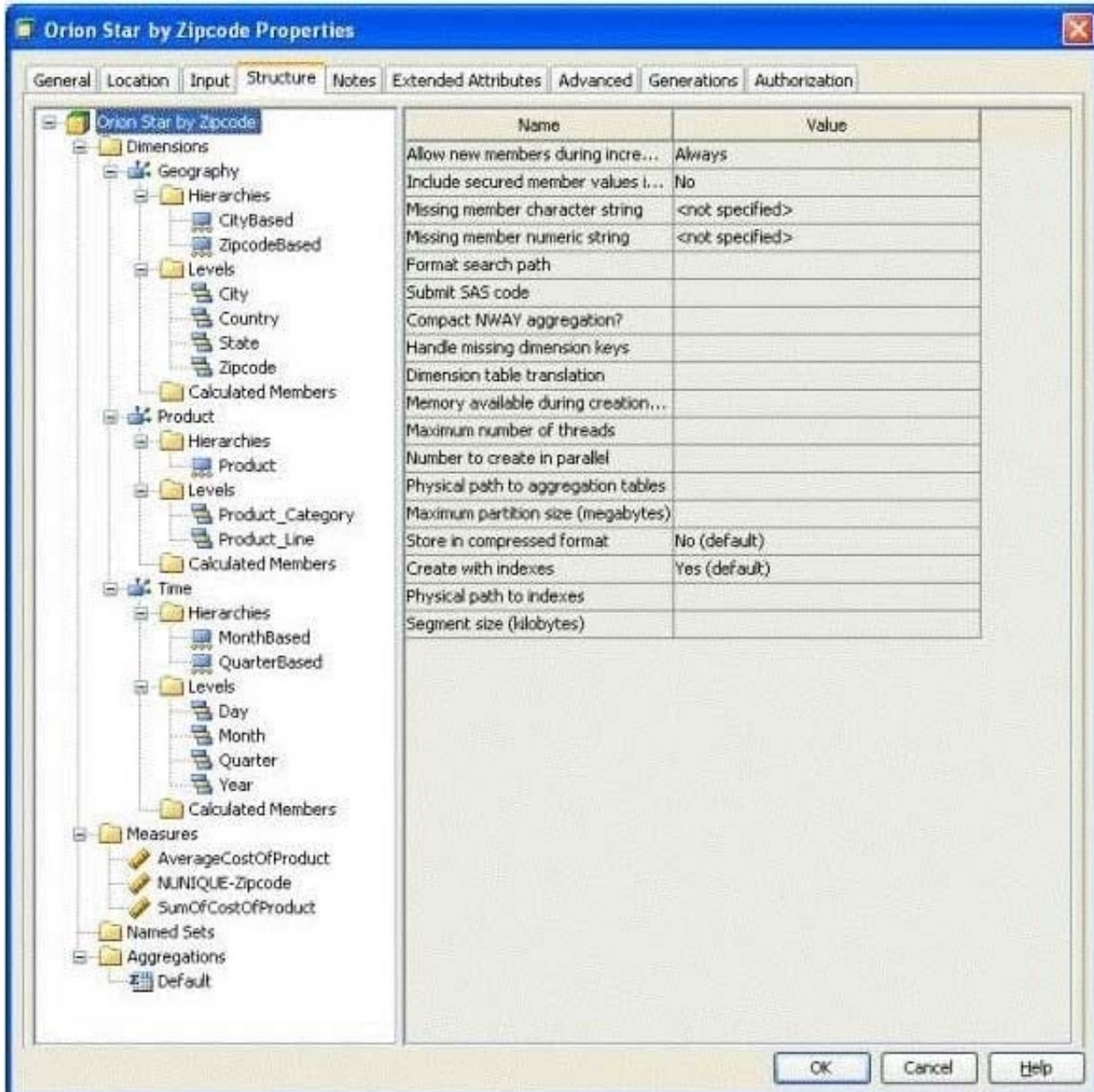
In SAS Information Map Studio, a map requirement is to create a filter where Company = "SAS". This Company filter should ONLY be applied if the user is in the MARKETING group. How can this be accomplished if the map is available to the entire company?

- A. Create an identity-driven filter based on SAS.IdentityGroupName.
- B. Assign the Company filter as a General prefilter.
- C. Create an authorization-based prefilter by adding the Company filter to the MARKETING group.
- D. Create an identity-driven filter based on SAS.IdentityGroups.

Correct Answer: C

QUESTION 5

Refer to the exhibit.



A SAS Information Map has been built with the SAS OLAP Cube that has been structured as shown in the exhibit.

You want to generate a SAS Web Report Studio report using the information map that contains the cube data.

Which selection is valid?

- A. AverageCostOfProduct, City Based, Zipcode Based, Product, Month Based, Quarter Based
- B. AverageCostOfProduct, City Based, Zipcode Based, Product, Month Based
- C. AverageCostOfProduct, City Based, Product, Month Based, Quarter Based
- D. AverageCostOfProduct, City Based, Product, Month Based

Correct Answer: D



VCE & PDF

Pass4itSure.com

<https://www.pass4itsure.com/a00-270.html>

2024 Latest pass4itsure A00-270 PDF and VCE dumps Download

[A00-270 PDF Dumps](#)

[A00-270 Practice Test](#)

[A00-270 Study Guide](#)