



9L0-412^{Q&As}

OS X Support Essentials 10.8 Exam

Pass Apple 9L0-412 Exam with 100% Guarantee

Free Download Real Questions & Answers **PDF** and **VCE** file from:

<https://www.pass4itsure.com/9L0-412.html>

100% Passing Guarantee
100% Money Back Assurance

Following Questions and Answers are all new published by Apple
Official Exam Center

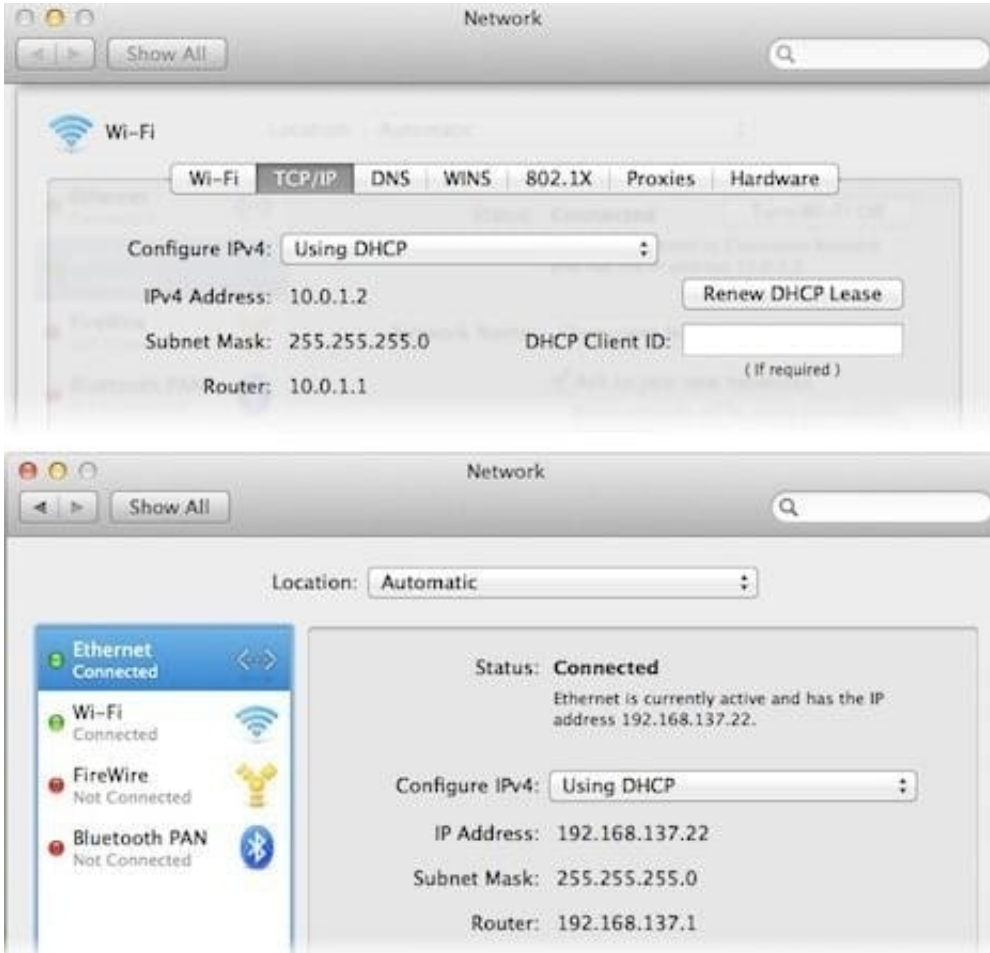
- ⚙️ **Instant Download** After Purchase
- ⚙️ **100% Money Back** Guarantee
- ⚙️ **365 Days** Free Update
- ⚙️ **800,000+** Satisfied Customers





QUESTION 1

Review the screenshots of a Mac computer's Network pane, and then answer the question below.



If a Mac with the network configuration shown above needs to initiate a connection to a server at address 17.20.8.9, which interface will it use to do so?

- A. Neither interface: this computer cannot communicate with the server at 17.20.8.9.
- B. Wi-Fi
- C. Either interface may be used, based on automatic routing.
- D. Ethernet

Correct Answer: C

QUESTION 2

Review the screenshot of part of a Network Utility window, and then answer the question below.



Enter an internet address to lookup.

(ex. 10.0.2.1 or www.example.com)

```
Lookup has started...

Trying "mainserver.pretendco.com"
;; ->HEADER<<- opcode: QUERY, status: NOERROR, id: 21852
;; flags: qr aa rd ra; QUERY: 1, ANSWER: 1, AUTHORITY: 1, ADDITIONAL: 0

;; QUESTION SECTION:
;mainserver.pretendco.com. IN ANY

;; ANSWER SECTION:
mainserver.pretendco.com. 10800 IN A 10.1.0.1

;; AUTHORITY SECTION:
pretendco.com. 10800 IN NS mainserver.pretendco.com.

Received 72 bytes from 17.208.73.57#53 in 0 ms
```

Which statement accurately interprets the Network Utility Lookup results shown above?

- A. A forward lookup of mainserver.pretendco.com returned the IP address 10.1.0.1.
- B. A reverse lookup of mainserver.pretendco.com returned the IP address 10.1.0.1.
- C. A reverse lookup of 10.1.0.1 returned the name mainserver.pretendco.com.
- D. The DNS server for mainserver.pretendco.com is pretendco.com.

Correct Answer: A

QUESTION 3

How do you start up an OS X Mountain Lion computer in single-user mode?

- A. Hold down Shift-Option while the computer restarts.
- B. Hold down Command-S while the computer restarts.
- C. Start up from the Mountain Lion Recovery system partition, and enter the command `reboot -single` in Terminal.
- D. Select Single-User Mode in the Startup Disk pane of System Preferences and restart the computer.



Correct Answer: B

QUESTION 4

You have a Mac OS X v10.6.8 computer that has several user accounts. If you install OS X Mountain Lion without first erasing the target volume, what will happen to the 10.6.8 operating system and the existing user accounts?

- A. The Installer archives the 10.6.8 OS and installs Mountain Lion. It maintains the user accounts.
- B. The Installer upgrades the 10.6.8 OS to Mountain Lion. It maintains the user accounts.
- C. The Installer replaces the 10.6.8 OS with Mountain Lion. It archives the user accounts, but they can be restored manually.
- D. The Installer erases the 10.6.8 OS and installs Mountain Lion. It archives the user accounts, but they can be restored manually.

Correct Answer: B

QUESTION 5

On your OS X Mountain Lion computer, you want the Finder to display filename extensions by default. How can you configure this setting from the Finder?

- A. Choose Preferences from the Finder menu, click Advanced, and select the option "Show all filename extensions."
- B. Control-click anywhere on the Desktop, select Preferences from the pop-up menu, click Advanced, and select the option "Show all filename extensions."
- C. Choose Show View Options from the View menu, and select the option "Show all filename extensions."
- D. Select any file icon, and choose Get Info from the File menu. In the Info window, click the disclosure triangle next to Name and Extension, deselect the option "Hide extension," and click Change All.

Correct Answer: A

[Latest 9L0-412 Dumps](#)

[9L0-412 Practice Test](#)

[9L0-412 Study Guide](#)