



# 9A0-142<sup>Q&As</sup>

Adobe InDesign CS5 ACE Exam

## Pass Adobe 9A0-142 Exam with 100% Guarantee

Free Download Real Questions & Answers **PDF** and **VCE** file from:

<https://www.pass4itsure.com/9a0-142.html>

100% Passing Guarantee  
100% Money Back Assurance

Following Questions and Answers are all new published by Adobe  
Official Exam Center

- ⚙️ **Instant Download** After Purchase
- ⚙️ **100% Money Back** Guarantee
- ⚙️ **365 Days** Free Update
- ⚙️ **800,000+** Satisfied Customers



**QUESTION 1**

Fill in the blank with the appropriate feature of InDesign CS5. allows search and replace operations that are based on regular expressions and not on the literal text in InDesign CS5.

Correct Answer: GREP

GREP stands for General Regular Expression Parser. GREP allows search and replace operations that are based on regular expression (regular expression means describing pattern or conditions within text, need not necessarily include one word or character of actual text) not on literal text. To open GREP, Choose Edit >Find/Change, and then click the GREP tab. On the GREP tab of the Find/Change dialog box, GREP expressions can be constructed to find alphanumeric strings and patterns in long documents or many open documents. GREP searches are case-sensitive by default.

---

**QUESTION 2**

You have created a Web page using InDesign CS5 with an extensive amount of information. You want to use hyperlinks for the convenience of the users of the Website so that the users can directly get to a particular section on the current Web page.

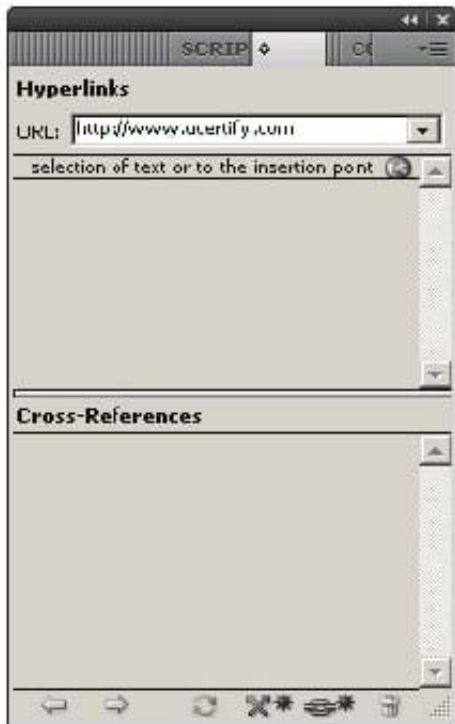
Which of the following will you specify in the 'Link To' menu of the New Hyperlink dialogue box to create hyperlinks to the Web page?

- A. Shared Destination
- B. Email
- C. URL
- D. Page

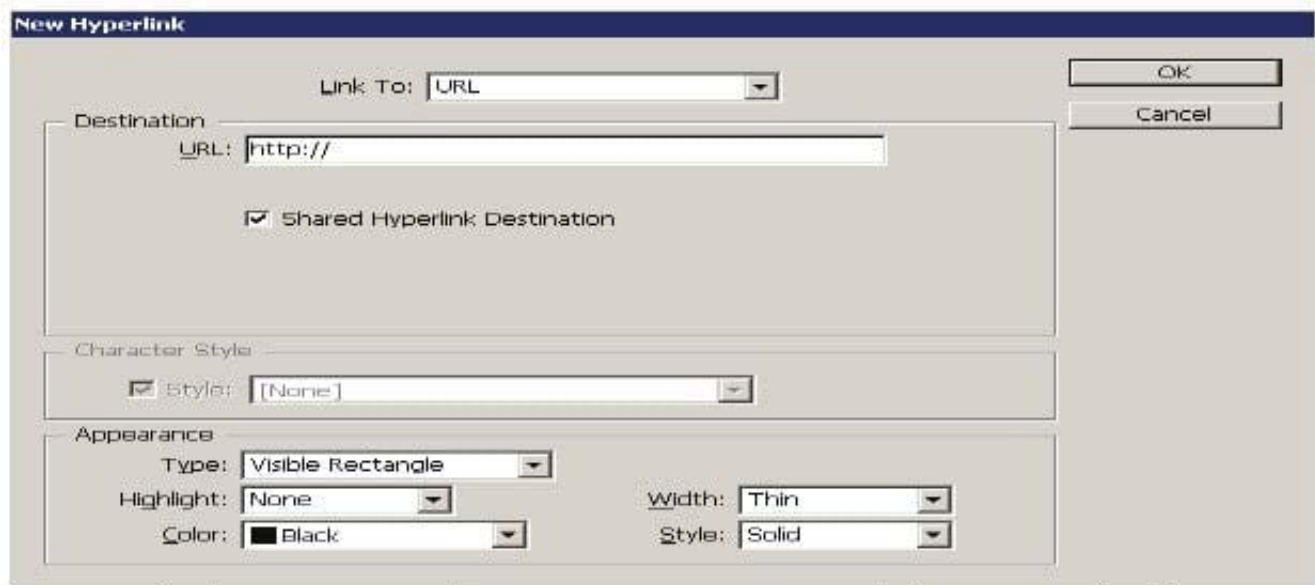
Correct Answer: C

When you are creating a hyperlink to a Webpage, the URL option will be specified in the 'Link To' menu as the hyperlink destination. When a user is creating a hyperlink to a webpage the following steps should be followed:

1. Select the text, frame, or graphic that needs to be the hyperlink's source.
2. Choose Window > Interactive > Hyperlink to open the Hyperlink panel.
3. In the URL text box of the Hyperlink panel, type or paste the URL name (such as <http://www.company.com>) which you want to use as hyperlink destination.
4. Choose New Hyperlink from the Hyperlinks panel.



5. Choose URL from the Link To menu, specify appearance options, and click OK.



Answer: B is incorrect. Specify the Email option in the 'Link To' menu to create a hyperlink destination to an email. If a user wants to create a hyperlink to an email message, the following steps should be followed:

1. Select the text, frame, or graphic which a user wants to be the source of the hyperlink.
2. Choose New Hyperlink in the Hyperlinks panel menu, or click the Create New Hyperlink button at the bottom of the Hyperlinks panel.
3. In the New Hyperlink dialog box, choose Email from the Link To menu.



**New Hyperlink**

Link To: Email

Destination

Address: andrew@yahoo.com

Subject Line: Adobe data

☒ Shared Hyperlink Destination

Character Style

☒ Style: [None]

Appearance

Type: Visible Rectangle

Highlight: None

Color: Black

Width: Thin

Style: Solid

OK

Cancel

4. For Address, type the email address, such as andrew@yahoo.com.

5. For Subject Line, type the text that appears in the subject line of the email message.

6. Select Shared Hyperlink Destination if the email message needs to be stored in the Hyperlinks panel for easy reuse.

7. Specify the appearance of the hyperlink source as per requirement, and then click OK.

Answer: A is incorrect. Specify the Shared Destination option in the 'Link To' menu to create a hyperlink destination to a shared destination.

1. Select the text, frame, or graphic which a user wants to be the source of the hyperlink.

2. Choose New Hyperlink in the Hyperlinks panel menu, or click the Create New Hyperlink button at the bottom of the Hyperlinks panel.

3. In the New Hyperlink dialog box, choose Shared Destination from the 'Link To' menu.



**New Hyperlink**

Link To: Page

**Destination**

Document: Untitled-1

Page: 1

Zoom Setting: Fixed

**Character Style**

☒ Style: [None]

**Appearance**

Type: Visible Rectangle

Highlight: None Width: Thin

Color: Black Style: Solid

OK Cancel

4. For Document, select the document containing the destination that a user wants to jump to. All open documents that have been saved are listed in the pop-up menu. If the document which a user is looking for is not open, select Browse in the pop-up menu, locate the file, and then click Open.

5. Choose a destination from the Name menu.

6. Specify hyperlink appearance options, and then click OK. Answer: D is incorrect. Specify the Page option in the '\\Link To\\' menu to create a hyperlink destination to a Page.

To create a hyperlink to a page take the following steps:

1. Select the text, frame, or graphic you want to be the source of the hyperlink.
2. Choose New Hyperlink in the Hyperlinks panel menu, or click the Create New Hyperlink button at the bottom of the Hyperlinks panel.
3. In the New Hyperlink dialog box, choose Page from the '\\Link To\\' menu.



**New Hyperlink**

Link To: Shared Destination

Destination

Document: Untitled-1

Name: http://

URL (http://)

Character Style

☒ Style: [None]

Appearance

Type: Visible Rectangle

Highlight: None

Color: Black

Width: Thin

Style: Solid

OK

Cancel

4. For Document, select the document containing the destination that a user wants to jump to. All open documents that have been saved are listed in the pop-up menu. If the document which a user is looking for not open, select Browse in the pop-up menu, locate the file, and then click Open.

5. For Page, specify the page number a user wants to jump to.

6. For Zoom Setting, do one of the following to select the view state of the page being jumped to: Select Fixed to display the magnification level and page position that were in effect when the link is created.

Select Fit View to display the visible portion of the current page as the destination. Select Fit In Window to display the current page in the destination window. Select Fit Width or Fit Height to display the width or height of the current page in the destination window.

Select Fit Visible to display the page so that its text and graphics fit the width of the window, which usually means that the margins are not displayed. Select Inherit Zoom to display the destination window at the magnification level the

reader uses when the hyperlink is clicked.

7. Specify appearance options, and then click OK.

### QUESTION 3

Which of the following allows you to resize several objects that have commonly aligned edges simultaneously, while keeping the gaps between them fixed?



- A. Gradient panel
- B. Align panel
- C. Gap tool
- D. Glyph panel

Correct Answer: C

A gap tool is used to adjust the size of a gap between two or more objects. It also allows a user to resize several objects that have commonly aligned edges simultaneously, while keeping the gaps between them fixed. It is a one-step way to

adjust the layout by directly manipulating the space between objects.

Answer: B is incorrect. The Align panel is used to align or distribute objects horizontally or vertically along the selection, margins, page, or spread. To open the Align panel a user should use the following command: Window > Object and Layout

> Align The Align panel does not affect objects to which the Lock Position command is applied, and does not change the alignment of text paragraphs within their frames.

Answer: A is incorrect. The Gradient panel is useful for creating an unnamed gradient that will not be used often.

Answer: D is incorrect. The Glyphs panel is used to enter glyphs.

---

#### QUESTION 4

Andrew has created a document in InDesign CS5. He created some URL hyperlinks in his document, but when he exported his document into PDF, he found that the hyperlinks were not working.

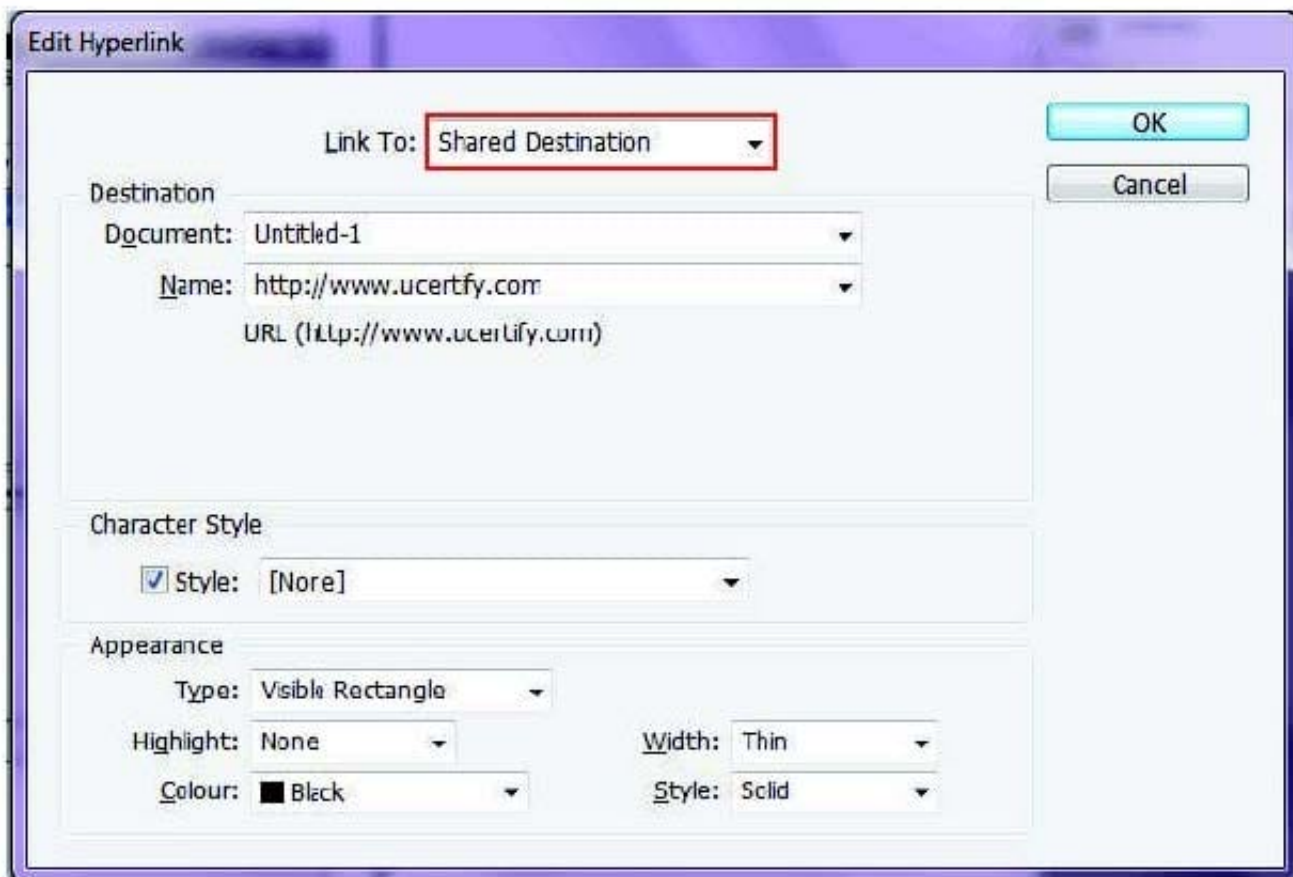
What will Andrew do to correct the problem?

- A. Double-click the hyperlink in the Hyperlinks panel> choose the URL from the Link To menu> deselect Shared Hyperlink Destination > click OK.
- B. Choose New Hyperlink in the Hyperlinks panel menu > choose the URL from the Link To menu > specify appearance options > click OK.
- C. Double-click the hyperlink in the Hyperlinks panel > choose the URL from the Link To menu > deselect the File > click OK.
- D. Double-click the hyperlink in the Hyperlinks panel > choose the URL from the Link To menu > deselect URL > click OK.

Correct Answer: A

If a URL hyperlink is not working in an exported PDF, there may be a problem with the hyperlink being a Shared Destination. Double-click the hyperlink in the Hyperlinks panel, choose the URL from the Link To menu, deselect Shared Hyperlink Destination, and click OK as shown in the following diagram.





### QUESTION 5

Which of the following statements are NOT true about the Place command? Each correct answer represents a complete solution. Choose all that apply.

- A. It enables you to place a PDF file into an InDesign document.
- B. It rasterizes artwork at the resolution of the InDesign document on which the artwork is placed.
- C. It is used to place artwork on the active layer in the Layers panel.
- D. It places artwork without rasterizing so that you can edit text or vector data in the placed artwork.

Correct Answer: CD

The Place command (File > Place) is used to place artwork into a new layer in an image as a Smart object. Initially, the artwork is placed with a bounding box that enables a user to move, rotate, or scale the artwork. The Place command enables the user to place PDF, Adobe Photoshop, and EPS files into the InDesign document. When the user places a file, it is rasterized at the resolution of the InDesign document into which it is placed. Since, the placed artwork is rasterized, the user cannot edit text or vector data in the placed artwork.

Answer: A and B are incorrect. These options are true about the Place command.