



9A0-142^{Q&As}

Adobe InDesign CS5 ACE Exam

Pass Adobe 9A0-142 Exam with 100% Guarantee

Free Download Real Questions & Answers **PDF** and **VCE** file from:

<https://www.pass4itsure.com/9a0-142.html>

100% Passing Guarantee
100% Money Back Assurance

Following Questions and Answers are all new published by Adobe
Official Exam Center

-  **Instant Download** After Purchase
-  **100% Money Back** Guarantee
-  **365 Days** Free Update
-  **800,000+** Satisfied Customers



**QUESTION 1**

You work as a Web Developer for company Inc. You are creating a document in InDesign CS5. You want to add imported XML data after the current data in your document.

What will you do to accomplish the task?

- A. Select the Import into Selected Element Content check box in the Import XML dialog box.
- B. Select the Merge Content check box in the Import XML dialog box.
- C. Select the Append Content check box in the Import XML dialog box.
- D. Select the Only Import Elements That Match Existing Structure check box in the Import XML dialog box.

Correct Answer: C

If you select the Append Content check box in the Import XML dialog box, InDesign adds the imported XML data after the current data and duplicates similar hierarchies and same-named data.

Answer: B is incorrect. If you select the Merge Content check box in the Import XML dialog box, InDesign merges the XML file into the existing XML data, flowing into the same structure, overriding same-named data, and adding new data.

Answer: A is incorrect. If you select the Import into Selected Element Content check box in the Import XML dialog box, InDesign brings the imported XML data into the currently selected object rather than into a new frame.

Answer: D is incorrect. If you select the Only Import Elements That Match Existing Structure check box in the Import XML dialog box, elements in the imported file that vary from or are not defined by the existing InDesign document will strip

out.

QUESTION 2

You work as a Design Expert for KBC Inc. You have created an artwork that is restricted to two Pantone spot colors. When it got printed, you noticed that there are some objects using Cyan and Magenta colors in your document.

How can you detect these objects before printing?

- A. Choose Window > Output > Flattener Preview panel.
- B. Click on the info icon in the Preflight panel.
- C. Select the Overprint Preview checkbox in the Separations Preview panel, then turn off visibility for the Pantone colors.
- D. Choose Window > Swatches.

Correct Answer: C

The Separations Preview panel is used to preview color separations on monitor before printing to avoid unexpected spot colors and unwanted overprinting. The Separations Preview panel allows a user to easily turn colors on and off so that it

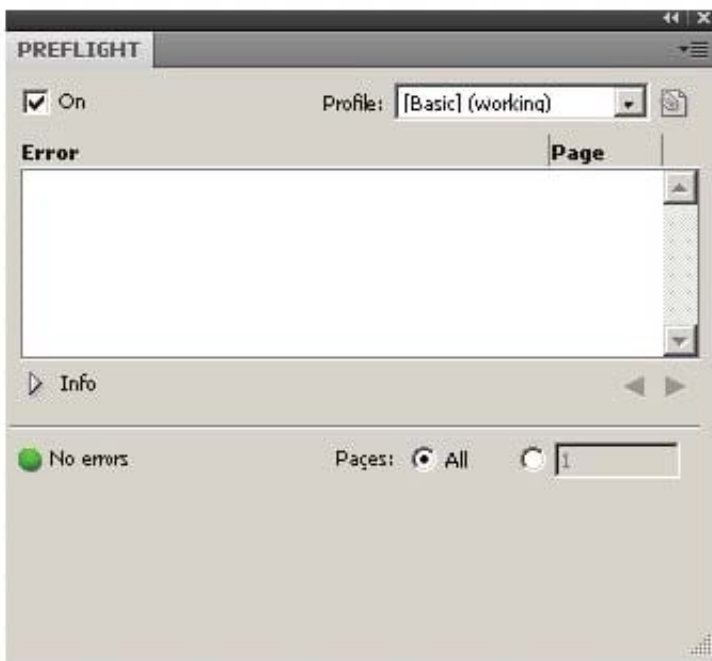


can be seen how blending, transparency, and overprinting will appear in color separated output. The Separations Preview panel can be displayed by choosing Window > Out put > Separations Preview or pressing Shift+F6.



Separations Preview panel

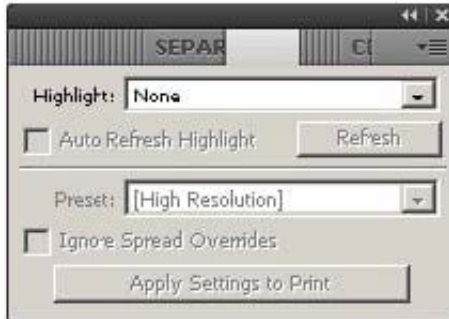
You can hide or view a separation ink on the screen by clicking the eye icon in the left of the separation name. To hide or view all separation inks on screen except one, press Alt and click the eye icon for that separation. To view all process plates at once, click the CMYK icon. The normal view can be returned by deselecting the Overprint Preview. Answer: D is incorrect. The Swatches panel stores colors. It is used to import, export, delete, and modify the color palette. Besides, a user can store custom colors in the Swatches panel. To add a color in the Swatches panel, move the cursor to the empty area of the Swatches panel (the cursor will change into the paint bucket) and click. To access the Swatches panel, select Window > Swatches. Answer: B is incorrect. The Preflight panel is a feature of InDesign CS5 that warns of the problems that could prevent a document or book from printing or outputting as expected while a document is being edited. These problems include missing files or fonts, low-resolution images, overset text, and a number of other conditions. The preflight settings can be configured to define which conditions are detected. These preflight settings are stored in preflight profiles for easy reuse. To open the Preflight panel, choose Window > Output > Preflight, and double-click the Preflight icon at the bottom of the document window. The Preflight icon is green if no errors are detected or red if errors are detected. The Preflight panel is shown in the image below.



Answer: A is incorrect. The Flattener Preview panel is used to see what page items (typically those with transparency)



are flattened (made solid) during printing or exporting to Encapsulated PostScript (EPS), Scalable Vector Graphics (SVG, a vector format for the Web), or Portable Document Format (PDF) format. Flattening occurs for printing devices and graphics export formats that do not support transparency. To open the Flattener Preview panel, Choose Window > Output > Flattener.



Flattener Preview panel

QUESTION 3

Which of the following tools can be used to create basic frames? Each correct answer represents a complete solution. Choose all that apply.

- A. Rectangle frame tool
- B. Pencil tool
- C. Polygon frame tool
- D. Pen tool

Correct Answer: AC

Following are the various objects that can be created with InDesign's object-creation tools.

1. Straight lines created by using the Line tool
2. Lines and shapes created by using the Pen tool or the Pencil tool
3. Basic shapes created by using Ellipse, Rectangle, and Polygon
4. Basic frames created by using Ellipse Frame, Rectangle Frame, and Polygon Frame

QUESTION 4

You are creating a document. You want to export this document to XML.

Which of the following options in the General tab of the Export XML dialog box will you choose to export break, white space, and special characters as decimal character entities rather than straight characters?



- A. View XML Using
- B. Remark Break, Whitespace, And Special Characters
- C. Remap Break, Whitespace, And Special Characters
- D. Export From Selected Element

Correct Answer: C

Remap Break, Whitespace, And Special Characters option is used to export break, white space, and special characters as decimal character entities rather than straight characters.

Answer: D is incorrect. You choose Export From Selected Element option to start exporting from the element you selected in the Structure pane.

Answer: A is incorrect. View XML Using option is chosen to open the exported file in a browser, XML editing application, or text editor.

Answer: B is incorrect. There is no such option exists in General tab of the Export XML dialog box.

QUESTION 5

You are a novice InDesign CS5 user. You want to create a book.

Which of the following commands will you use to find the Book panel?

- A. Choose Type > Bulleted And Numbered Lists > Define Lists.
- B. Choose Window > New > Book.
- C. Choose View > New > Book.
- D. Choose File > New > Book.

Correct Answer: D

The Book panel appears when you choose File > New > Book to create a book; or when you open a book file that you have created, the Book panel appears.

[Latest 9A0-142 Dumps](#)

[9A0-142 PDF Dumps](#)

[9A0-142 Exam Questions](#)