



98-361^{Q&As}

Software Development Fundamentals

Pass Microsoft 98-361 Exam with 100% Guarantee

Free Download Real Questions & Answers **PDF** and **VCE** file from:

<https://www.pass4itsure.com/98-361.html>

100% Passing Guarantee
100% Money Back Assurance

Following Questions and Answers are all new published by Microsoft
Official Exam Center

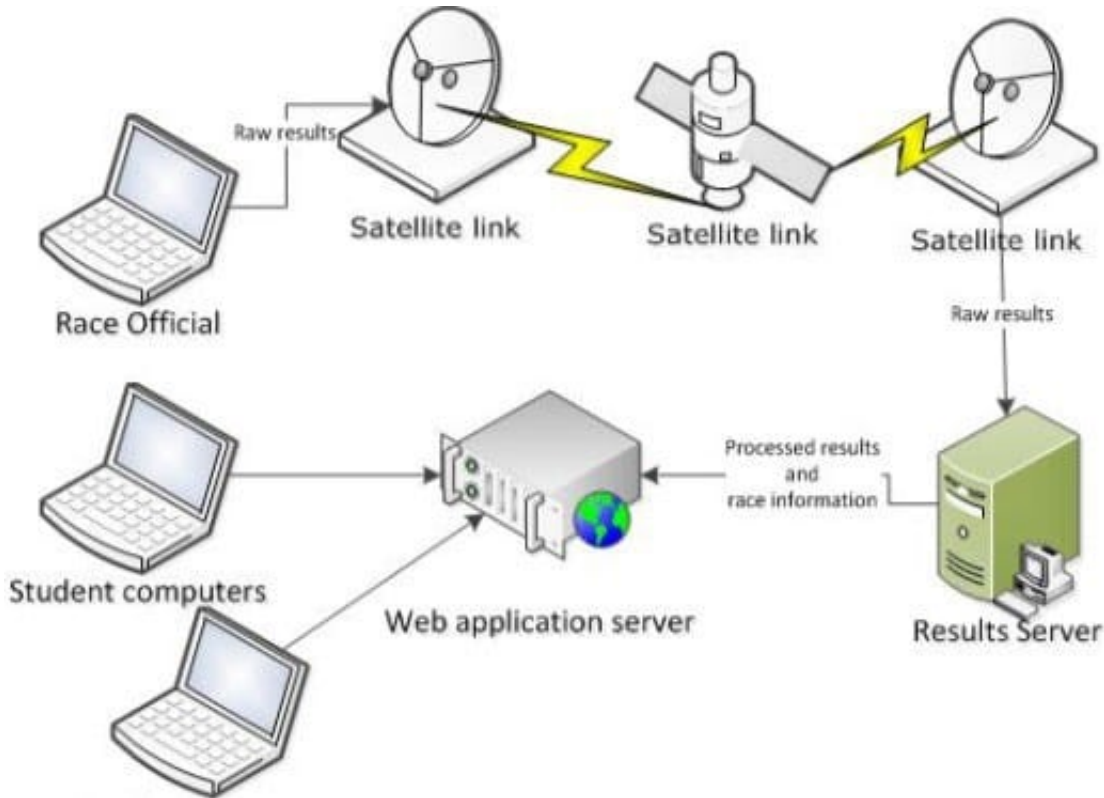
-  **Instant Download** After Purchase
-  **100% Money Back** Guarantee
-  **365 Days** Free Update
-  **800,000+** Satisfied Customers





QUESTION 1

You are reviewing the architecture for a system that allows race officials to enter the results of 5K race results. The results are then made available to students using a web application. The architecture is shown below:



Use the drop-down menus to select the answer choice that answers each question. Each correct selection is worth one point.

Hot Area:

Answer Area

To minimize the time between when a race official records the results and when the results are available on the web, which part of the system is critical?

To increase the number of students that can access race results, what element should be added to the system?

satellite link
student computer
race official computer
web application server

satellite link
race officials
results servers
web application servers

Hot Area:



Answer Area

To minimize the time between when a race official records the results and when the results are available on the web, which part of the system is critical?

To increase the number of students that can access race results, what element should be added to the system?

satellite link
student computer
race official computer
web application server

satellite link
race officials
results servers
web application servers

Correct Answer:

Answer Area

To minimize the time between when a race official records the results and when the results are available on the web, which part of the system is critical?

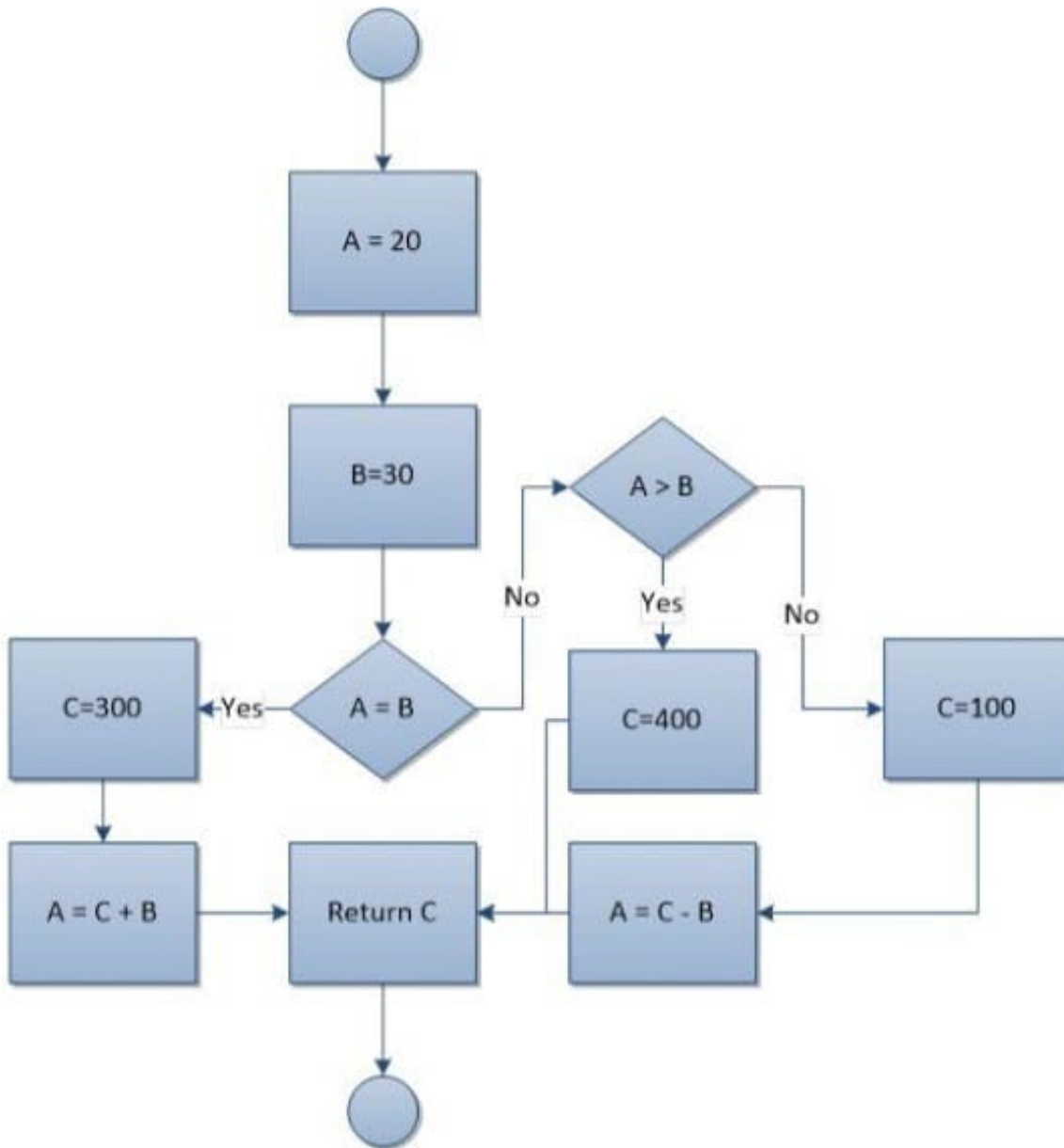
To increase the number of students that can access race results, what element should be added to the system?

satellite link
student computer
race official computer
web application server

satellite link
race officials
results servers
web application servers

QUESTION 2

You have the following flowchart:



Hot Area:

Answer Area

The value that is returned is [answer choice]

20
100
300
400

The value of A is [answer choice].

20
30
70
330



Hot Area:

Answer Area

The value that is returned is [answer choice]

20
100
300
400

The value of A is [answer choice].

20
30
70
330

Correct Answer:

Answer Area

The value that is returned is [answer choice]

20
100
300
400

The value of A is [answer choice].

20
30
70
330

QUESTION 3

The purpose of the Finally section in an exception handler is to:

- A. Execute code only when an exception is thrown.
- B. Break out of the error handler.
- C. Execute code regardless of whether an exception is thrown.
- D. Conclude the execution of the application.

Correct Answer: C

By using a finally block, you can clean up any resources that are allocated in a try block, and you can run code even if an exception occurs in the try block. Typically, the statements of a finally block run when control leaves a try statement. The transfer of control can occur as a result of normal execution, of execution of a break, continue, goto, or return statement, or of propagation of an exception out of the try statement.

**QUESTION 4**

You need to create a stored procedure that passes in a person's name and age. Which statement should you use to create the stored procedure?

- A.

```
UPDATE PROCEDURE StoreData
@UserName nvarchar(255),
@Age int
```
- B.

```
CREATE PROCEDURE StoreData
@UserName char,
@Age double
```
- C.

```
CREATE PROCEDURE StoreData
@UserName nvarchar(255),
@Age int
```
- D.

```
CREATE PROCEDURE StoreData (@UserName, @Age)
```

A. B. C. D.

Correct Answer: A

QUESTION 5

You need to allow a consumer of a class to modify a private data member.

What should you do?

- A. Provide a public function that assigns a value to the data member.
- B. Create global variables in the class.
- C. Assign a value directly to the data member.
- D. Provide a private function that assigns a value to the data member.

Correct Answer: A

In this example (see below), the Employee class contains two private data members, name and salary. As private members, they cannot be accessed except by member methods. Public methods named GetName and Salary are added to

allow controlled access to the private members. The name member is accessed by way of a public method, and the salary member is accessed by way of a public read-only property.

Note: The private keyword is a member access modifier. Private access is the least permissive access level. Private members are accessible only within the body of the class or the struct in which they are declared

Example:

```
class Employee2
```



```
{  
private string name = "FirstName, LastName";  
private double salary = 100.0;  
public string GetName()  
{  
return name;  
}  
public double Salary  
{  
get { return salary; }  
}  
}
```

[Latest 98-361 Dumps](#)

[98-361 PDF Dumps](#)

[98-361 Study Guide](#)