



830-01^{Q&As}

RCPE Certified Professional WAN Optimization

Pass Riverbed 830-01 Exam with 100% Guarantee

Free Download Real Questions & Answers **PDF** and **VCE** file from:

<https://www.pass4itsure.com/830-01.html>

100% Passing Guarantee
100% Money Back Assurance

Following Questions and Answers are all new published by Riverbed
Official Exam Center

-  **Instant Download** After Purchase
-  **100% Money Back** Guarantee
-  **365 Days** Free Update
-  **800,000+** Satisfied Customers





QUESTION 1

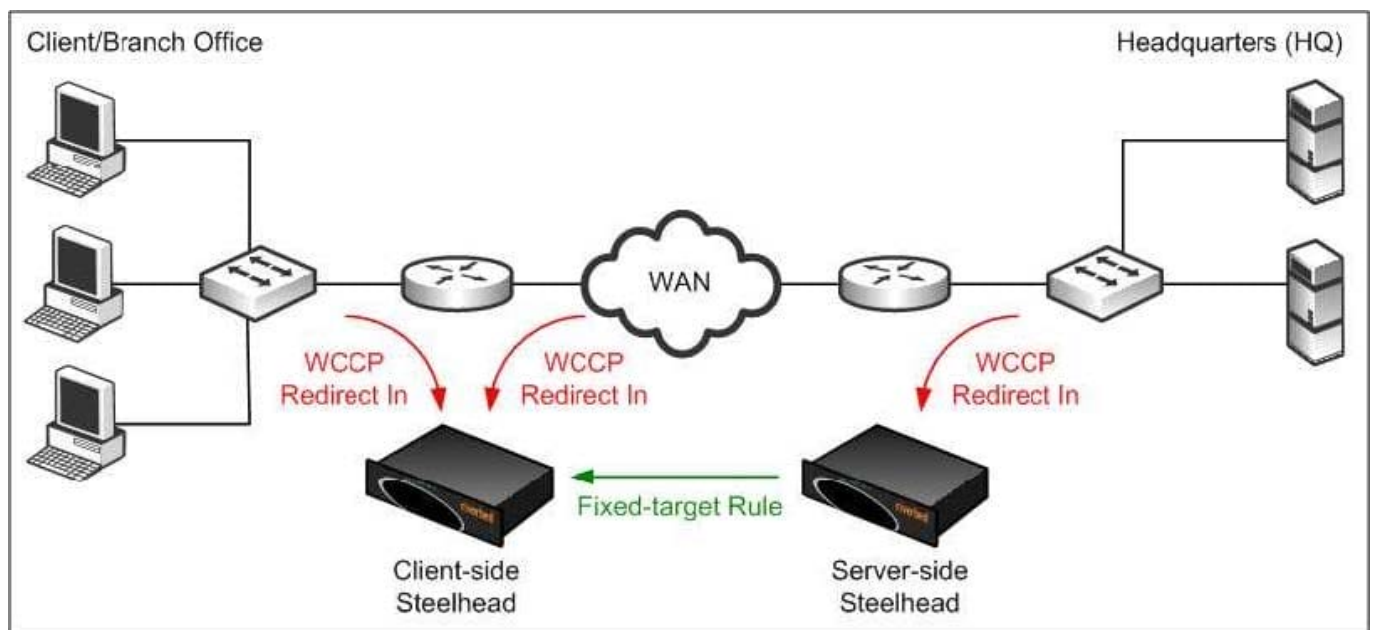
What platform is supported by SMC-VE?

- A. ESX 3.5
- B. ESX 4.0
- C. ESX 4.1
- D. RSP
- E. HyperV

Correct Answer: D

QUESTION 2

Refer to the exhibit.



A user from one of your branch offices reports connections to servers are failing after a new deployment. The exhibit shows how the Steelhead appliances have been deployed. Which of the following will most likely fix the issue? (Select 2)

- A. Fixed-target rule is needed on the client-side Steelhead appliance
- B. Change the WCCP to use Redirect Out instead of Redirect In
- C. Remove Redirect-IN from the LAN at the Branch Office
- D. Add Redirect-IN on the WAN at the HQ



E. Remove fixed-target rule from the server-side Steelhead appliance

Correct Answer: AD

QUESTION 3

Which of the following are examples of Networking policies on the CMC appliance? (Select 3)

- A. WCCP
- B. HighSpeed TCP
- C. Routing
- D. Port Labels
- E. HTTP Protocol

Correct Answer: ACD

QUESTION 4

You have a pair of SteelHead appliances, both deployed in-path, both have a valid IP address on the in-path interfaces, optimizations are enabled and the service is started. They are unable to auto discover each other as a firewall is stripping the probes. How could you work around this on the SteelHeads?

- A. Enable Enhanced Auto Discovery on each SteelHead and restart the optimization service.
- B. Create a full transparency in-path rule on each SteelHead.
- C. Use static NAT entries for each in-path interface.
- D. Create a fixed-target in-path rule on each SteelHead pointing to the peer in-path IP address on port 7810.
- E. Create a port transparency in-path rule on each SteelHead

Correct Answer: D

QUESTION 5

What are the possible ways to downgrade a Virtual Steelhead appliance after it has been upgraded?

- A. Remove the upgrade license and restart the virtual Steelhead appliance
- B. Reinstall the original model license
- C. Reduce the amount of CPU and RAM allocated to the Virtual Steelhead appliance and it will automatically downgrade at the next startup
- D. It is not possible to downgrade after an upgrade



Correct Answer: D

[830-01 VCE Dumps](#)

[830-01 Study Guide](#)

[830-01 Exam Questions](#)