



830-01^{Q&As}

RCPE Certified Professional WAN Optimization

Pass Riverbed 830-01 Exam with 100% Guarantee

Free Download Real Questions & Answers **PDF** and **VCE** file from:

<https://www.pass4itsure.com/830-01.html>

100% Passing Guarantee
100% Money Back Assurance

Following Questions and Answers are all new published by Riverbed
Official Exam Center

- ⚙️ **Instant Download** After Purchase
- ⚙️ **100% Money Back** Guarantee
- ⚙️ **365 Days** Free Update
- ⚙️ **800,000+** Satisfied Customers



**QUESTION 1**

Which of the following is Endpoint alarm?

- A. Locked secure vault
- B. Firewallled status
- C. Network interface error
- D. Temperature
- E. Memory paging

Correct Answer: B

QUESTION 2

-- Exhibit

riverbed Central Management Console					
Home Configure Manage Reports Support 3 Appliances Healthy					
Appliances Policies Operation History Appliance Backup/Restore Configure Upgrades					
Manage > Appliances ?					
+ New Group + New Appliance - Remove Selected ⇅ Move Selected Filter Appliance Operations					
	Groups and Managed Appliances	Product / Model	Connection	Optimization Policy	System Settings Policy
▼	Global				TestPolicy1
📄	Q SH10 / 192.168.99.10 (V70S3000C64AE)	V250H	Connected: Degraded		
📄	Q SH11 / 192.168.99.11 (V70HP000C64B0)	V250H	Connected: Healthy		
📄	Q SH12 / 192.168.99.12 (V70MG000C74FE)	V250H	Connected: Healthy		
📄	Q SH13 / 192.168.99.13 (V70JQ000C7488)	V250H	Connected: Healthy		



-- Exhibit -Refer to the exhibit. What does the screenshot represent? (Select 2)

- A. The policy TestPolicy1 was created and was implemented on all the Steelhead appliance on the Global group.
- B. The policy TestPolicy1 was created and was not implemented on all the Steelhead appliances on the Global group.
- C. The TestPolicy1 will be implemented on the Global group Steelhead appliances after a Push operation.
- D. The TestPolicy1 will not be implemented on the Global group Steelhead appliances. There is a configuration error.

Correct Answer: BC

QUESTION 3

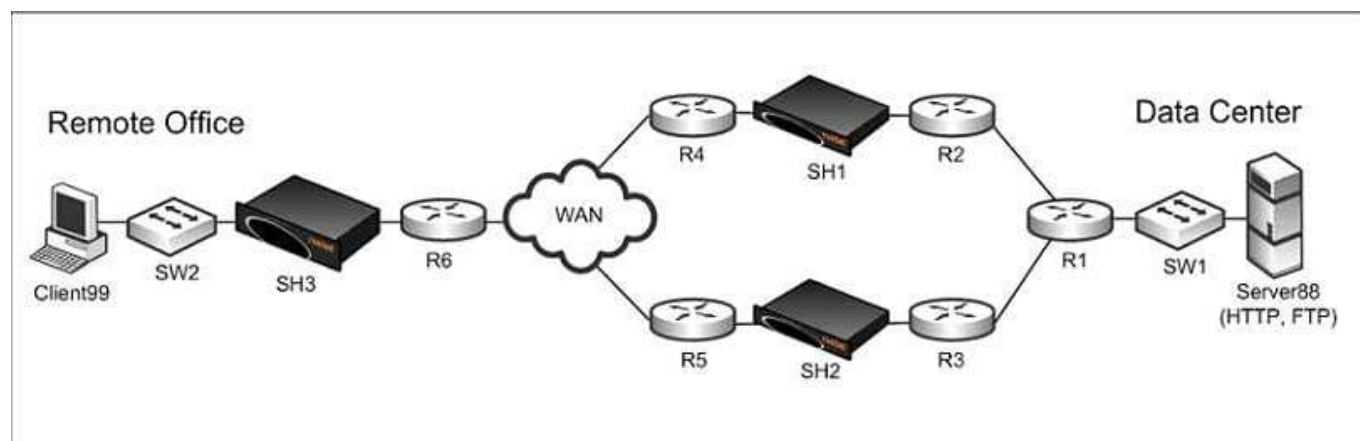
When two or more Steelhead appliances are configured with Connection Forwarding in such environments as WCCP clustering, what feature will allow remaining Steelhead appliances to continue to provide optimization for new connections when one unit fails?

- A. In-Path Neighbor FailureE. Allow
- B. WCCP neighbor active
- C. Minimum cluster count set to 1
- D. Maximum cluster count set to 2
- E. This cannot be done on Steelhead appliances

Correct Answer: A

QUESTION 4

Three Steelhead appliances SH1, SH2, and SH3 are deployed as shown in the exhibit. They are all using the default auto-discovery rule for optimization. However, CLIENT99 experiences a failure when attempting to access either the HTTP or FTP service on SERVER88. CLIENT99 was able to access these services prior to the deployment of the three Steelhead appliances.



Which of the following choices would most likely correct the problem?



- A. Remove SH2. Use only SH1 and SH3.
- B. Remove SH1. Use only SH2 and SH3.
- C. Turn on Connection Forwarding between SH1 and SH2
- D. Turn on Connection Forwarding between SH1 and SH3
- E. Turn on Connection Forwarding between SH2 and SH3

Correct Answer: C

QUESTION 5

The Interceptor appliance cluster can support how many optimized connections?

- A. 50,000
- B. 100,000
- C. 200,000
- D. More than 200,000

Correct Answer: D

[830-01 PDF Dumps](#)

[830-01 VCE Dumps](#)

[830-01 Practice Test](#)