



70-767^{Q&As}

Implementing a Data Warehouse using SQL

Pass Microsoft 70-767 Exam with 100% Guarantee

Free Download Real Questions & Answers **PDF** and **VCE** file from:

<https://www.pass4itsure.com/70-767.html>

100% Passing Guarantee
100% Money Back Assurance

Following Questions and Answers are all new published by Microsoft
Official Exam Center

-  **Instant Download** After Purchase
-  **100% Money Back** Guarantee
-  **365 Days** Free Update
-  **800,000+** Satisfied Customers





QUESTION 1

Note: This question is part of a series of questions that present the same scenario. Each question in the series contains a unique solution that might meet the stated goals. Some question sets might have more than one correct solution, while others might not have a correct solution.

After you answer a question in this sections, you will NOT be able to return to it. As a result, these questions will not appear in the review screen.

You have a data warehouse that stores information about products, sales, and orders for a manufacturing company. The instance contains a database that has two tables named SalesOrderHeader and SalesOrderDetail.

SalesOrderHeader has 500,000 rows and SalesOrderDetail has 3,000,000 rows.

Users report performance degradation when they run the following stored procedure:

```
CREATE PROCEDURE Sales.GetRecentSales (@date datetime)
AS BEGIN
    IF @date is NULL
        SET @date = DATEADD(MONTH, -3, (SELECT MAX(ORDERDATE) FROM Sales.SalesOrderHeader))
    SELECT * FROM Sales.SalesOrderHeader h, Sales.SalesOrderDetail d
    WHERE h.SalesOrderID = d.SalesOrderID
    AND h.OrderDate > @date
END
```

You need to optimize performance.

Solution: You run the following Transact-SQL statement:

```
CREATE STATISTICS Stat1
On Sales.SalesOrderHeader (OrderDate)
WITH SAMPLE 100 ROWS
```

Does the solution meet the goal?

A. Yes

B. No

Correct Answer: B

100 out of 500,000 rows is a too small sample size.

References: <https://docs.microsoft.com/en-us/azure/sql-data-warehouse/sql-data-warehouse-tables-statistics>

QUESTION 2

Note: This question is part of a series of questions that use the same or similar answer choices. An answer choice may be correct for more than one question in the series. Each question is independent of the other questions in this series.



Information and details provided in a question apply only to that question.

You have a database named DB1 that has change data capture enabled.

A Microsoft SQL Server Integration Services (SSIS) job runs once weekly. The job loads changes from DB1 to a data warehouse by querying the change data capture tables.

A new version of that integration Services package is released that introduces several errors in the loading process.

You need to roll back the Integration Services package to the previous version. Which stored procedure should you execute?

- A. catalog.deploy_project
- B. catalog.restore_project
- C. catalog.stop.operation
- D. sys.sp_cdc.addJob
- E. sys.sp.cdc.changejob

Correct Answer: B

catalog.restore_project restores a project in the Integration Services catalog to a previous version.

References: <https://docs.microsoft.com/en-us/sql/integration-services/system-stored-procedures/catalog-restore-project-ssisdb-database?view=sql-server-2017>

QUESTION 3

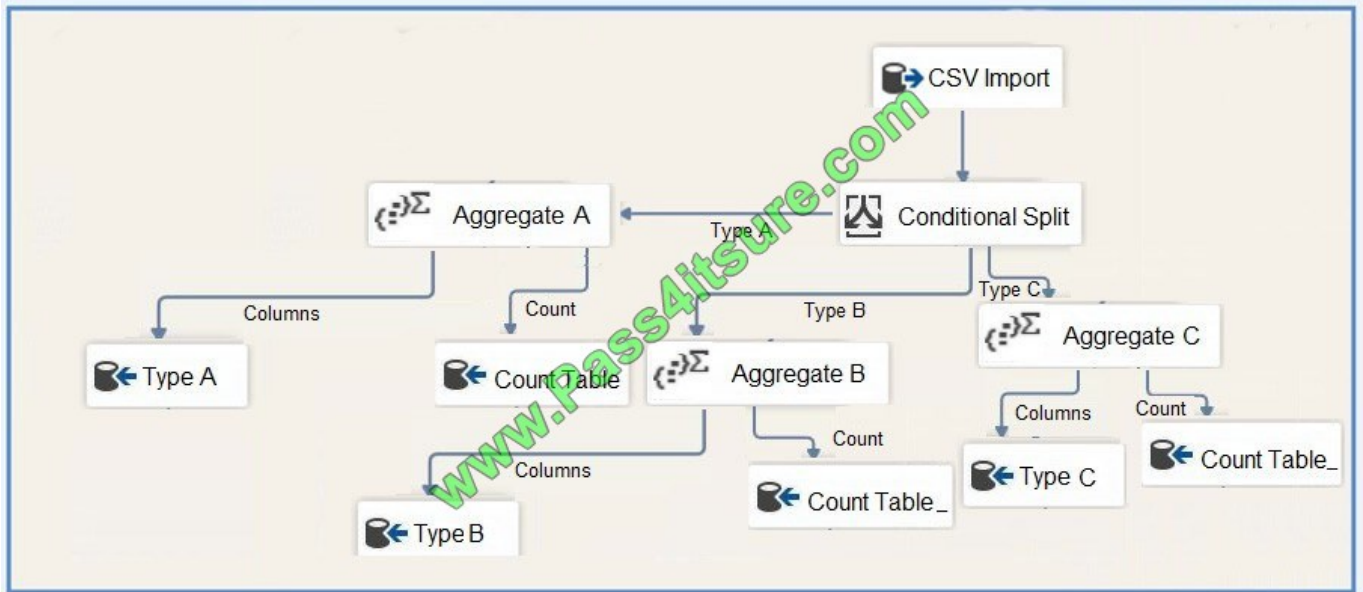
Note: This question is part of a series of questions that present the same scenario. Each question in the series contains a unique solution that might meet the stated goals. Some question sets might have more than one correct solution, while others might not have a correct solution.

After you answer a question in this section, you will NOT be able to return to it. As a result, these questions will not appear in the review screen.

Each night you receive a comma separated values (CSV) file that contains different types of rows. Each row type has a different structure. Each row in the CSV file is unique. The first column in every row is named Type. This column identifies

the data type.

For each data type, you need to load data from the CSV file to a target table. A separate table must contain the number of rows loaded for each data type. Solution: You create a SQL Server Integration Services (SSIS) package as shown in the exhibit. (Click the Exhibit tab.)



Does the solution meet the goal?

A. Yes

B. No

Correct Answer: A

The conditional split is correctly placed before the count.

QUESTION 4

Note: This question is part of a series of questions that present the same scenario. Each question in the series contains a unique solution that might meet the stated goals. Some question sets might have more than one correct solution, while

others might not have a correct solution.

After you answer a question in this section, you will NOT be able to return to it. As a result, these questions will not appear in the review screen.

You have a Microsoft SQL server that has Data Quality Services (DQS) installed.

You need to review the completeness and the uniqueness of the data stored in the matching policy.

Solution: You create a matching rule.

Does this meet the goal?

A. Yes

B. No

Correct Answer: B



Use a matching rule, and use completeness and uniqueness data to determine what weight to give a field in the matching process.

If there is a high level of uniqueness in a field, using the field in a matching policy can decrease the matching results, so you may want to set the weight for that field to a relatively small value. If you have a low level of uniqueness for a column,

but low completeness, you may not want to include a domain for that column.

References: <https://docs.microsoft.com/en-us/sql/data-quality-services/create-a-matching-policy?view=sql-server-2017>

QUESTION 5

CORRECT TEXT - (Topic 2)

You are designing a package control flow. The package moves sales order data from a SQL Azure transactional database to an on-premise reporting database. The package will run several times a day, while new sales orders are being

added to the transactional database. The current design of the package control flow is shown in the answer area.

(Click the Exhibit button.)

The screenshot displays the Microsoft Visual Studio (Administrator) interface for an SSIS package named 'Transactions.dtsx'. The Control Flow tab is active, showing a sequence of three tasks: 'Update Recent Orders', 'Insert New Customers', and 'Insert New Orders'. The 'Insert New Orders' task is selected, and its properties are visible in the Properties window on the right. The Solution Explorer shows the project structure, and the Connection Managers window shows 'LocalHost.TestDB'. A large watermark 'www.Pass4itsure.com' is overlaid on the image.



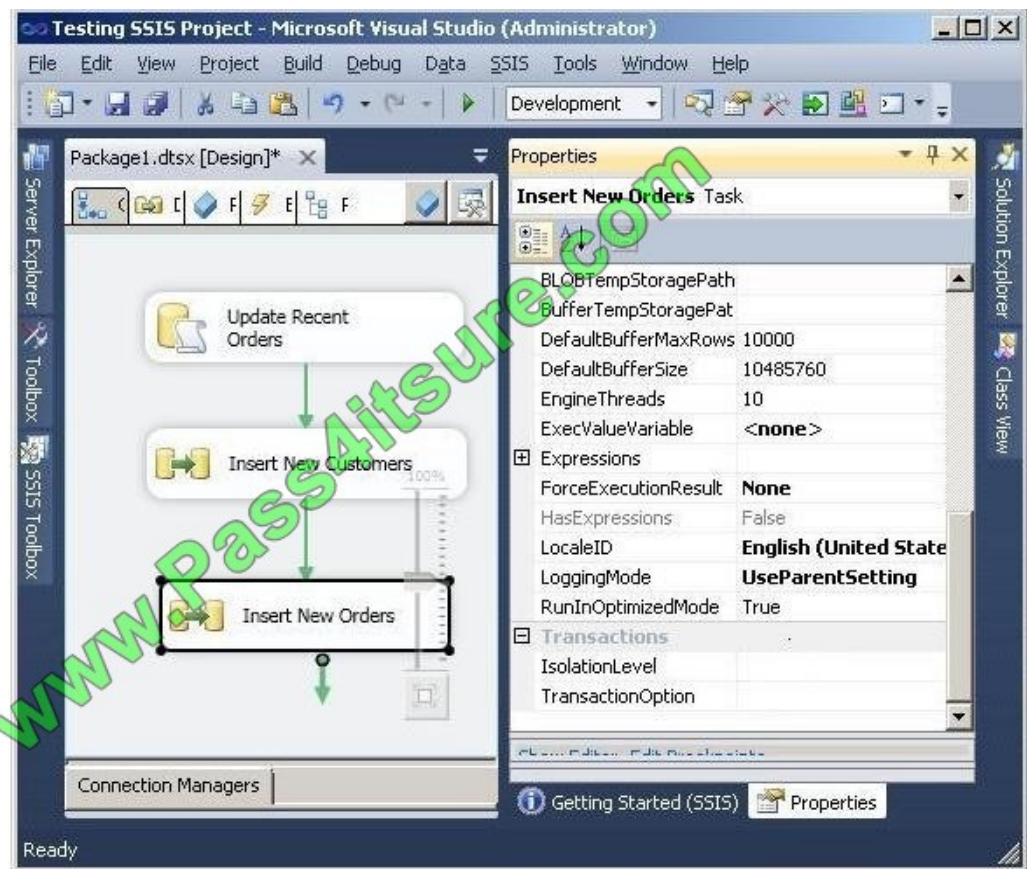
The Insert New Orders Data Flow task must meet the following requirements:

- Usage of the tempdb database should not be impacted.
- Concurrency should be maximized, while only reading committed transactions.
- If the task fails, only that task needs to be rolled back.

You need to configure the Insert New Orders Data Flow task to meet the requirements.

How should you configure the transaction properties? (To answer, select the appropriate setting or settings in the answer area.)

- Chaos
- NotSupported
- ReadCommitted
- ReadUncommitted
- RepeatableRead
- Required
- Serializable
- Snapshot
- Supported
- Unspecified



A.

Correct Answer: A

Answer: IsolationLevel = ReadCommitted. TransactionOption = Required <http://msdn.microsoft.com/en-us/library/ms137690.aspx> <http://msdn.microsoft.com/en-us/library/ms137749.aspx>
<http://msdn.microsoft.com/enus/library/microsoft.sqlserver.dts.runtime.dtscontainer.isolationlevel.aspx>
<http://msdn.microsoft.com/en-us/library/ms173763.aspx>



To Read the [Whole Q&As](#), please purchase the [Complete Version](#) from [Our website](#).

Try our product !

100% Guaranteed Success

100% Money Back Guarantee

365 Days Free Update

Instant Download After Purchase

24x7 Customer Support

Average 99.9% Success Rate

More than 800,000 Satisfied Customers Worldwide

Multi-Platform capabilities - [Windows](#), [Mac](#), [Android](#), [iPhone](#), [iPod](#), [iPad](#), [Kindle](#)

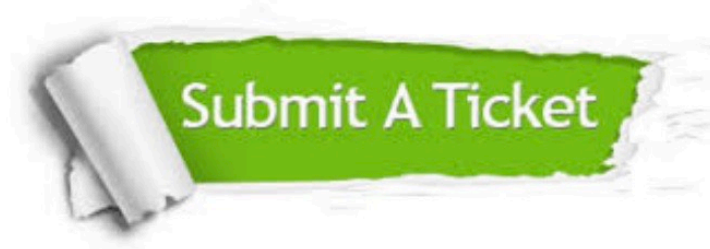
We provide exam PDF and VCE of Cisco, Microsoft, IBM, CompTIA, Oracle and other IT Certifications. You can view Vendor list of All Certification Exams offered:

<https://www.pass4itsure.com/allproducts>

Need Help

Please provide as much detail as possible so we can best assist you.

To update a previously submitted ticket:



 <p>One Year Free Update Free update is available within One Year after your purchase. After One Year, you will get 50% discounts for updating. And we are proud to boast a 24/7 efficient Customer Support system via Email.</p>	 <p>Money Back Guarantee To ensure that you are spending on quality products, we provide 100% money back guarantee for 30 days from the date of purchase.</p>	 <p>Security & Privacy We respect customer privacy. We use McAfee's security service to provide you with utmost security for your personal information & peace of mind.</p>
---	---	--

Any charges made through this site will appear as Global Simulators Limited.

All trademarks are the property of their respective owners.

Copyright © pass4itsure, All Rights Reserved.