



70-744^{Q&As}

Securing Windows Server 2016

Pass Microsoft 70-744 Exam with 100% Guarantee

Free Download Real Questions & Answers **PDF** and **VCE** file from:

<https://www.pass4itsure.com/70-744.html>

100% Passing Guarantee
100% Money Back Assurance

Following Questions and Answers are all new published by Microsoft
Official Exam Center

- ⚙ **Instant Download** After Purchase
- ⚙ **100% Money Back** Guarantee
- ⚙ **365 Days** Free Update
- ⚙ **800,000+** Satisfied Customers





QUESTION 1

Note: This question is part of a series of questions that use the same scenario. For your convenience, the scenario is repeated in each question. Each question presents a different goal and answer choices, but the text of the scenario is

exactly the same in each question in this series.

Start of repeated scenario.

Your network contains an Active Directory domain named contoso.com. The functional level of the forest and the domain is Windows Server 2008 R2.

The domain contains the servers configured as shown in the following table.

Server name	Configuration
Nano1	Nano Server
Nano2	Nano Server
Server2	File server that has a shared folder named DATA
Server3	DNS server that has a DNSSEC-signed zone named adatum.com
Server4	Hyper-V host
Server1	Application server

All servers run Windows Server 2016. All client computers run Windows 10.

You have an organizational unit (OU) named Marketing that contains the computers in the marketing department. You have an OU named Finance that contains the computers in the finance department. You have an OU named AppServers

that contains application servers. A Group Policy object (GPO) named GP1 is linked to the Marketing OU. A GPO named GP2 is linked to the AppServers OU.

You install Windows Defender on Nano1.

End of repeated scenario.

You need to configure Nano1 as a Hyper-V host.

Which command should you run? To answer, select the appropriate options in the answer area.

Hot Area:



Answer Area

Add-WindowsFeature
Install-Package
Install-WindowsFeature

Microsoft-NanoServer-Computer-Package
Microsoft-NanoServer-Guest-Package
Microsoft-NanoServer-Host-Package
Microsoft-NanoServer-ShieldedVM-Package

Correct Answer:



Answer Area

Add-WindowsFeature
Install-Package
Install-WindowsFeature

Microsoft-NanoServer-Computer-Package
Microsoft-NanoServer-Guest-Package
Microsoft-NanoServer-Host-Package
Microsoft-NanoServer-ShieldedVM-Package

References: <https://docs.microsoft.com/en-us/windows-server/get-started/deploy-nano-server>

QUESTION 2

Your network contains an Active Directory domain named contoso.com. The domain contains a file server named Server1 that runs Windows Server 2016. Server1 has a shared folder named Share1.

You plan to create a subfolder in Share1 for each domain user.

You need to limit each user to using 100 MB of data in their respective subfolder.

The solution must enable the users to be notified when they use 80 percent of the available space in the subfolder.

Which tool should you use?



- A. File Explorer
- B. Shared Folders
- C. Server Manager
- D. Disk Management
- E. Storage Explorer
- F. Computer Management
- G. System Configuration
- H. File Server Resource Manager (FSRM)

Correct Answer: H

QUESTION 3

Note: This question is part of a series of questions that present the same scenario. Each question in the series contains a unique solution that might meet the stated goals. Some question sets might have more than one correct solution, while

others might not have a correct solution.

After you answer a question in this sections, you will NOT be able to return to it. As a result, these questions will not appear in the review screen.

Your network contains an Active Directory forest named contoso.com. All servers run Windows Server 2016. The forest contains 2,000 client computers that run Windows 10. All client computers are deployed from a customized Windows

image.

You need to deploy 10 Privileged Access Workstations (PAWs). The solution must ensure that administrators can access several client applications used by all users.

Solution: You deploy 10 physical computers and configure each one as a virtualization host. You deploy the operating system on each host by using the customized Windows image. On each host, you create a guest virtual machine and

configure the virtual machine as a PAW.

Does this meet the goal?

- A. Yes
- B. No

Correct Answer: B

References: <https://technet.microsoft.com/en-us/windows-server-docs/security/securing-privileged-access/privileged-access-workstations>



QUESTION 4

Note: This question is part of a series of questions that present the same scenario. Each question in the series contains a unique solution that might meet the stated goals. Some question sets might have more than one correct solution, while

others might not have a correct solution.

After you answer a question in this sections, you will NOT be able to return to it. As a result, these questions will not appear in the review screen.

Your network contains an Active Directory forest named contoso.com. All servers run Windows Server 2016. The forest contains 2,000 client computers that run Windows 10. All client computers are deployed from a customized Windows image.

You need to deploy 10 Privileged Access Workstations (PAWs). The solution must ensure that administrators can access several client applications used by all users.

Solution: You deploy one physical computer and configure it as Hyper-V host that runs Windows Server 2016. You create 10 virtual machines and configure each one as a PAW.

Does this meet the goal?

A. Yes

B. No

Correct Answer: B

References: <https://technet.microsoft.com/en-us/windows-server-docs/security/securing-privileged-access/privileged-access-workstations>

QUESTION 5

Your network contains an Active Directory domain.

The domain contains two organizational units (OUs) named ProdOU and TestOU.

All production servers are in ProdOU. All test servers are in TestOU. A server named Server1 is in TestOU.

You have a Windows Server Update Services (WSUS) server named WSUS1 that runs Windows Server 2016.

All servers receive updates from WSUS1.

WSUS is configured to approve updates for computers in the Test computer group automatically.

Manual approval is required for updates to the computers in the Production computer group.

You move Server1 to ProdOU, and you discover that updates continue to be approved and installed automatically on Server1.

You need to ensure that all the servers in ProdOU only receive updates that are approved manually.

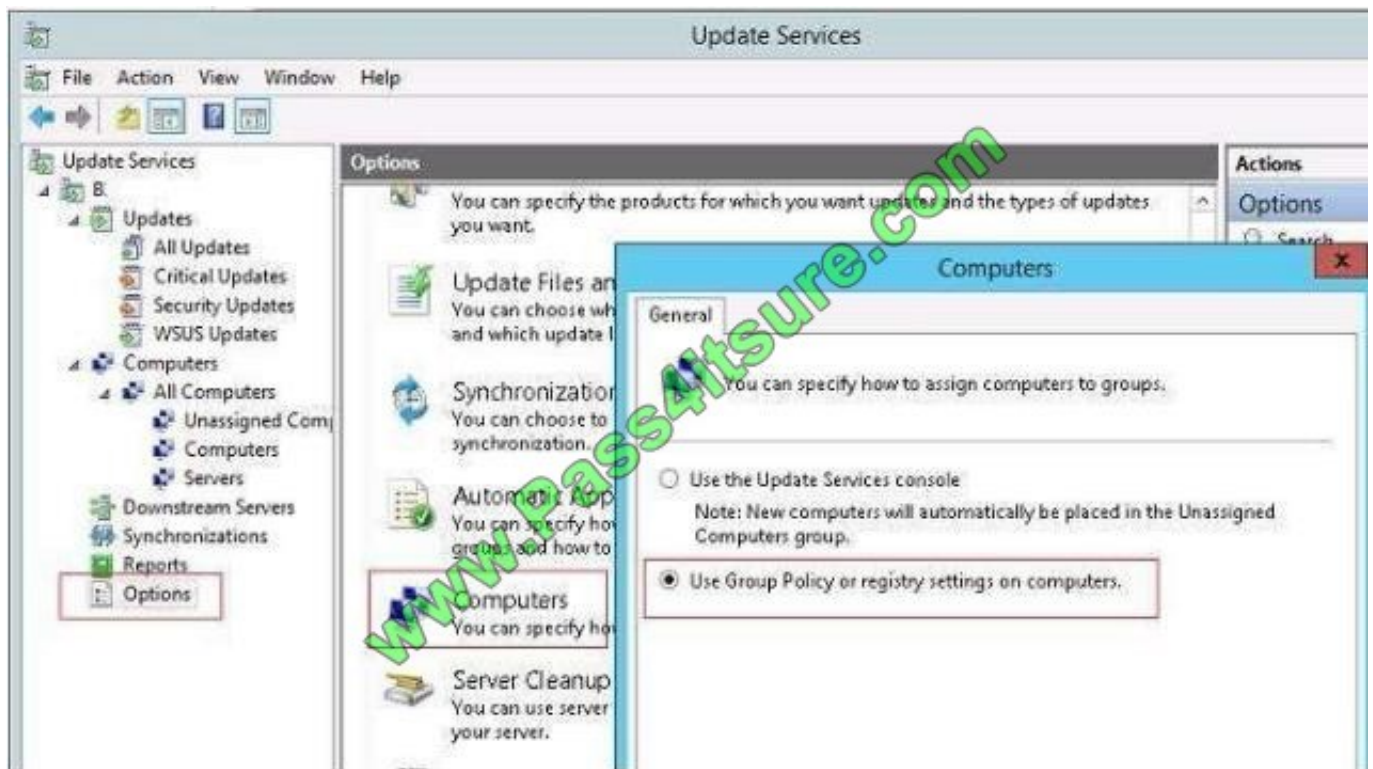
What should you do?



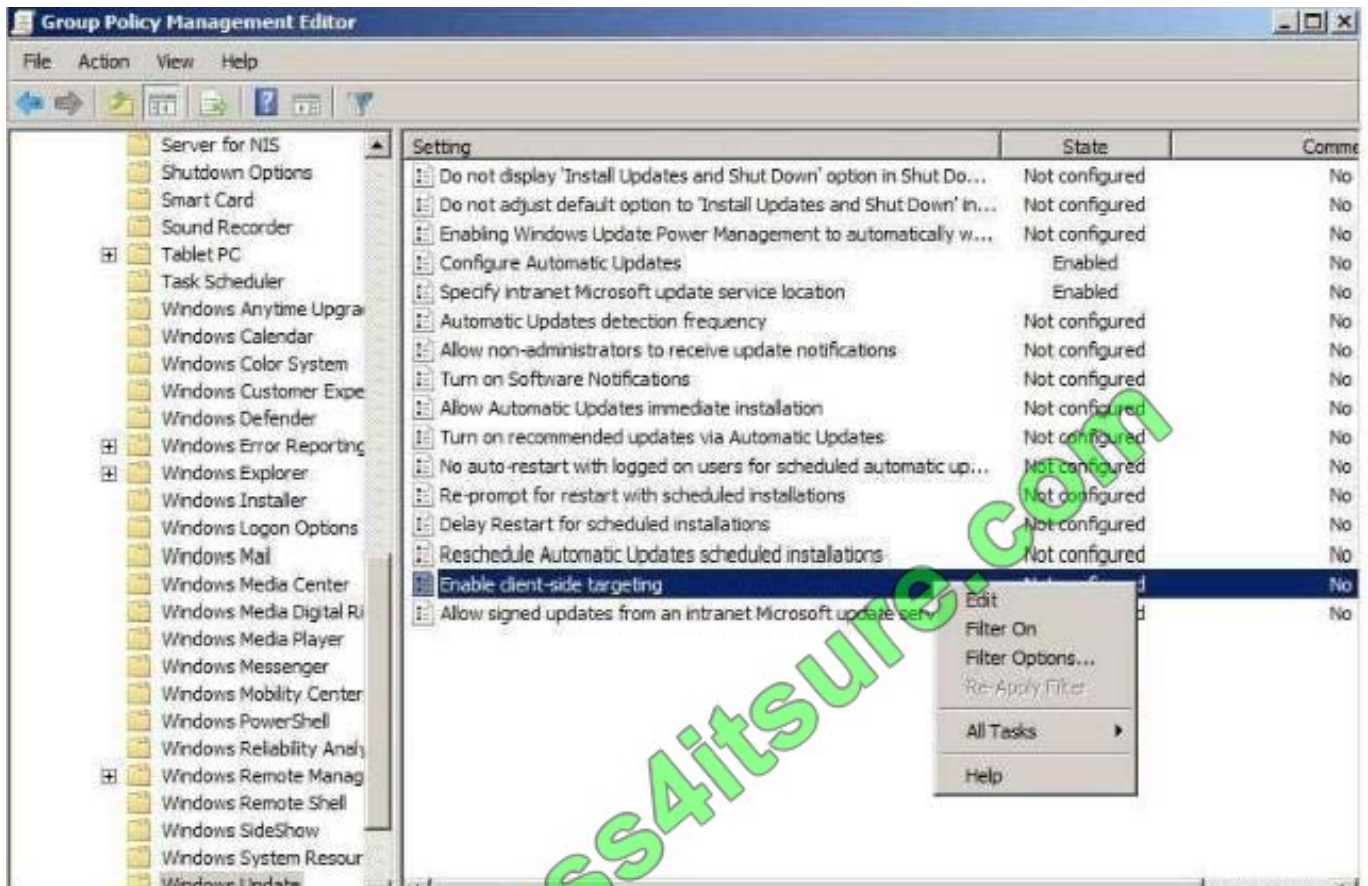
- A. Turn off auto-restart for updates during active hours by using Group Policy objects (GPOs).
- B. Configure client-side targeting by using Group Policy objects (GPOs).
- C. Create computer groups by using the Update Services console.
- D. Run wuaclt.exe /detectnow on each server after the server is moved to a different OU.

Correct Answer: B

Updates in WSUS are approved against "Computer Group", not AD OUs. For this example, to prevent Server1 to install automatically approved updates, you have to remove Server1 from "Test" computer group and add Server1 into "Production" computer group in WSUS console, manually or use the WSUS GPO Client-Side Targeting feature. <https://technet.microsoft.com/en-us/library/cc720450%28v=ws.10%29.aspx?f=255&MSPPErrors=-2147217396> With client-side targeting, you enable client-computers to add themselves to the computer groups you create in the WSUS console. You can enable client-side targeting through Group Policy (in an Active Directory network environment) or by editing registry entries (in a non-Active Directory network environment) for the client computers. When the WSUS client computers connect to the WSUS server, they will add themselves into the correct computer group. Client-side targeting is an excellent option if you have many client computers and want to automate the process of assigning them to computer groups. First, configure WSUS to allow Client Site Targeting.



Secondly, configure GPO to affect "ProdOU", so that Server1 add itself to "Production" computer group. <https://prajwaldesai.com/how-to-configure-client-side-targeting-in-wsus>

[70-744 PDF Dumps](#)[70-744 Study Guide](#)[70-744 Exam Questions](#)



To Read the [Whole Q&As](#), please purchase the [Complete Version](#) from [Our website](#).

Try our product !

100% Guaranteed Success

100% Money Back Guarantee

365 Days Free Update

Instant Download After Purchase

24x7 Customer Support

Average 99.9% Success Rate

More than 800,000 Satisfied Customers Worldwide

Multi-Platform capabilities - [Windows](#), [Mac](#), [Android](#), [iPhone](#), [iPod](#), [iPad](#), [Kindle](#)

We provide exam PDF and VCE of Cisco, Microsoft, IBM, CompTIA, Oracle and other IT Certifications. You can view Vendor list of All Certification Exams offered:

<https://www.pass4itsure.com/allproducts>

Need Help

Please provide as much detail as possible so we can best assist you.

To update a previously submitted ticket:



 One Year Free Update <p>Free update is available within One Year after your purchase. After One Year, you will get 50% discounts for updating. And we are proud to boast a 24/7 efficient Customer Support system via Email.</p>	 Money Back Guarantee <p>To ensure that you are spending on quality products, we provide 100% money back guarantee for 30 days from the date of purchase.</p>	 Security & Privacy <p>We respect customer privacy. We use McAfee's security service to provide you with utmost security for your personal information & peace of mind.</p>
---	---	--

Any charges made through this site will appear as Global Simulators Limited.

All trademarks are the property of their respective owners.

Copyright © pass4itsure, All Rights Reserved.