



70-740^{Q&As}

Installation, Storage, and Compute with Windows Server 2016

Pass Microsoft 70-740 Exam with 100% Guarantee

Free Download Real Questions & Answers **PDF** and **VCE** file from:

<https://www.pass4itsure.com/70-740.html>

100% Passing Guarantee
100% Money Back Assurance

Following Questions and Answers are all new published by Microsoft
Official Exam Center

- ⚙ **Instant Download** After Purchase
- ⚙ **100% Money Back** Guarantee
- ⚙ **365 Days** Free Update
- ⚙ **800,000+** Satisfied Customers





QUESTION 1

Note This question is part of a series of questions that use the same scenario. For your convenience, the scenario is repeated in each question. Each question presents a different goal and answer choices, but the text of the scenario is exactly the same in each question in this series.

Start of Repeated Scenario:

Your network contains an Active Directory domain named contoso.com. The functional level of the forest and the domain is Windows Server 2008 R2. All servers in the domain run Windows Server 2016 Standard. The domain contains 300

client computers that run either Windows 8.1 or Windows 10.

The domain contains nine servers that are configured as shown in the following table.

Name	Configuration	Planned changes
Server1	Domain controller	None
Server2	File server	Run Failover Clustering and Storage Spaces Direct
Server3	File server	Run Failover Clustering and Storage Spaces Direct
Server4	Hyper-V host	Run shielded virtual machines
Server5	Hyper-V host	None
Server6	Member server	Run Active Directory Federation Services (AD FS)
VM1	Virtual machine hosted on Server5	None
VM2	Virtual machine hosted on Server5	None
VM3	Virtual machine hosted on Server5	None

The virtual machines are configured as follows:

Each virtual machine has one virtual network adapter.

VM1 and VM2 are part of a Network Load Balancing (NLB) cluster.

All of the servers on the network can communicate with all of the virtual machines.

End of repeated Scenario.

On server4, you plan to provision a new volume that will be used to create large, fixed-size VHDX files. Which type of file system should you use the new volume to minimize the amount of time required to create the VHDX files?

- A. ReFS
- B. NTFS
- C. CVFS
- D. exFAT



Correct Answer: A

QUESTION 2

DRAG DROP

Your network contains an Active Directory domain named contoso.com. The domain contains a server named Server1 that runs Windows Server 2016.


Server1 allows inbound connectivity from all computers in the contoso.com domain. Server1 has an IP address of 192.168.0.10.

Server1 hosts a Windows container named Container1. Container1 hosts a website that is accessible on port 80.

You need to ensure that you can use the Docker client to manage Container1 from any computer in the domain.

Which three cmdlets should you run in sequence? To answer, move the appropriate cmdlets from the list of cmdlets to the answer area and arrange them in the correct order.

Select and Place:

Actions	Answer Area
Restart-Service docker	
New-ContainerNetwork- Name nat1 – Mode NAT- SubnetPrefix 192.168.0.0/24 – GatewayAddress 192.168.0.10	
Add-Content 'c:\programdata\docker\config\daemon.json' '{"hosts": [{"tcp://127.0.0.1:80", "npip: //"}]}'	
Add-Content 'c:\programdata\docker\config\daemon.json' '{"hosts": [{"tcp://0.0.0.0:2375", "npip: //"}]}'	
New-Item-Type File c:\programData\docker\config\daemon.json	

Correct Answer:



Actions	Answer Area
<div>New-ContainerNetwork- Name nat1 – Mode NAT- SubnetPrefix 192.168.0.0/24 – GatewayAddress 192.168.0.10</div>	<div>New-Item-Type File c:\programdata\docker\config\daemon.json</div>
<div>Add-Content 'c:\programdata\docker\config\daemon.json' '{"hosts": [{"tcp://127.0.0.1:80", "npipetcp://127.0.0.1:80"}]}'</div>	<div>Add-Content 'c:\programdata\docker\config\daemon.json' '{"hosts": [{"tcp://0.0.0.0:2375", "npipetcp://0.0.0.0:2375"}]}'</div>
	<div>Restart-Service docker</div>
	<div>⏪ ⏩</div>

<https://glennsarti.github.io/blog/getting-started-with-windows-containers/> <https://docs.microsoft.com/en-us/virtualization/windowscontainers/manage-containers/container-networking>

QUESTION 3

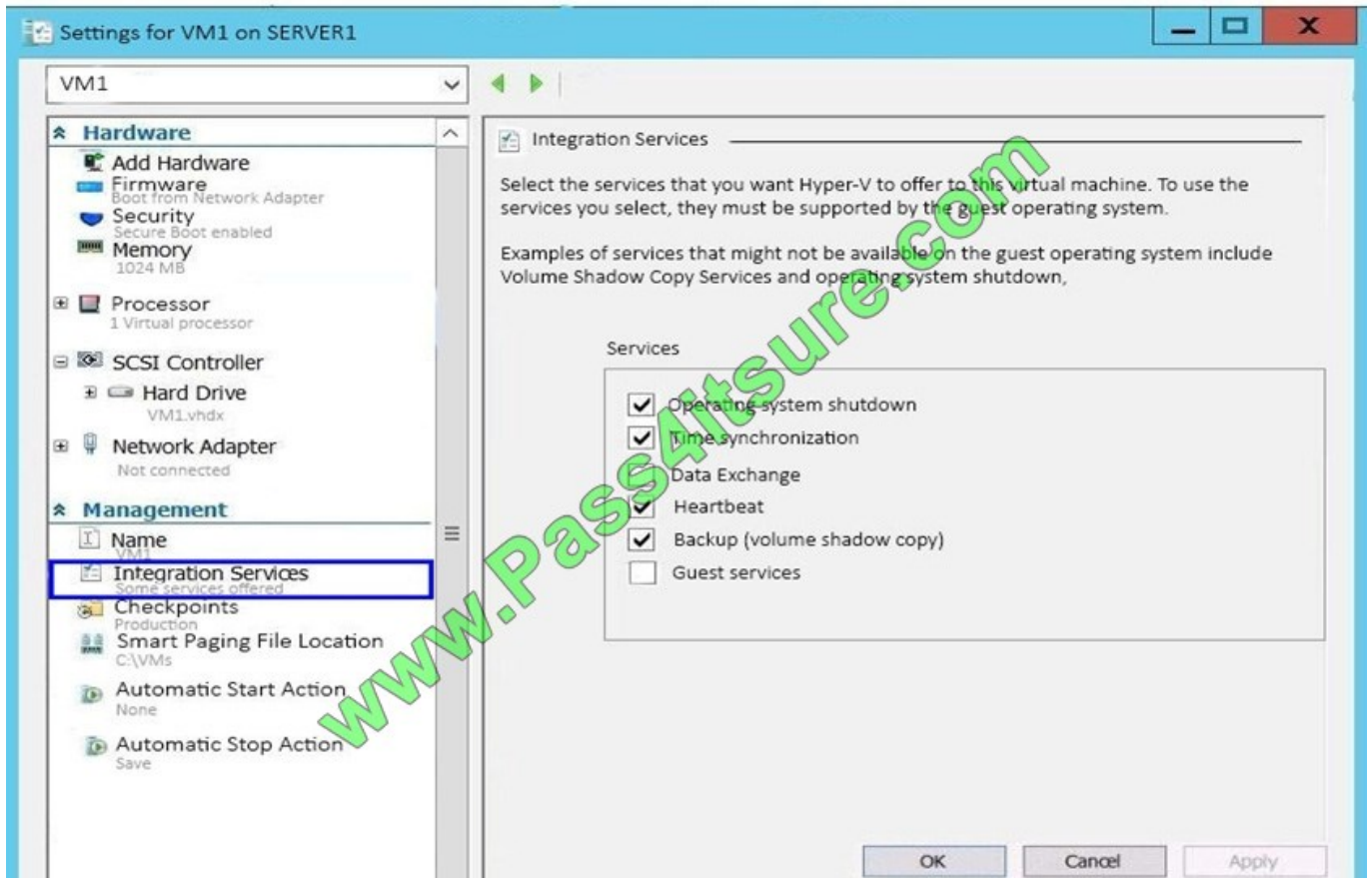
Note: This question is part of a series of questions that present the same scenario. Each question in the series contains a unique solution that might meet the stated goals. Some question sets might have more than one correct solution, while

others might not have a correct solution.

After you answer a question in this section, you will NOT be able to return to it. As a result, these questions will not appear in the review screen.

You have a Hyper-V host named Server1 that hosts a virtual machine named VM1. Server1 and VM1 run Windows Server 2016.

The settings for VM1 are configured as shown in the exhibit. (Click the Exhibit button.)



You need to ensure that you can use the Copy-VMFile cmdlet on Server1 to copy files from VM1.

Solution: You enable the Guest services integration service for VM1.

Does this meet the goal?

A. Yes

B. No

Correct Answer: A

The guest service allows the Hyper-V administrator to copy files to a running virtual machine without using a network connection. Beforehand the only way to copy files to the virtual machine was for both the virtual machine and the host be

connected to same network and then either use file services to copy file or to create a remote desktop session to the virtual machine and copy files via RDS session.

To copy a file to a virtual machine you need to use the Copy-VMFile PowerShell cmdlet.

References: [https://technet.microsoft.com/en-us/library/dn798297\(v=ws.11\).aspx](https://technet.microsoft.com/en-us/library/dn798297(v=ws.11).aspx)

QUESTION 4

After you answer a question in this section, you will NOT be able to return to it. As a result, these questions will not



appear in the review screen.

You have a server named Server1 that runs Windows Server 2016.

You plan to use Windows Server Backup to back up all of the data on Server1. You create a new volume on Server1.

You need to ensure that the new volume can be used as a backup target. The backup target must support incremental backups. Solution: You mount the volume to C:\Backup, and you format the volume by using FAT32.

Does this meet the goal?

A. Yes

B. No

Correct Answer: B

QUESTION 5

Your network contains an Active Directory domain. The domain contains two servers named Server1 and Server2.

On Server1 and Server2, you use Windows Server Backup to create backups every day at 01:00 and 17:00. You configure Server1 to back up to a network share. You configure Server2 to back up to a locally attached hard disk that is

dedicated for backup.

The first backups are created on Monday at 01:00.

How many recovery points will be available for each server on Thursday at 14:00? To answer, select the appropriate options in the answer area.

NOTE: Each correct selection is worth one point.

Hot Area:



Answer Area

Server1:

6
7
8

Server2:

1
6
7
8

Correct Answer:

Answer Area

Server1:

5
6
7
8

Server2:

1
6
7
8

[70-740 Study Guide](#)

[70-740 Exam Questions](#)

[70-740 Braindumps](#)



To Read the [Whole Q&As](#), please purchase the [Complete Version](#) from [Our website](#).

Try our product !

100% Guaranteed Success

100% Money Back Guarantee

365 Days Free Update

Instant Download After Purchase

24x7 Customer Support

Average 99.9% Success Rate

More than 800,000 Satisfied Customers Worldwide

Multi-Platform capabilities - Windows, Mac, Android, iPhone, iPod, iPad, Kindle

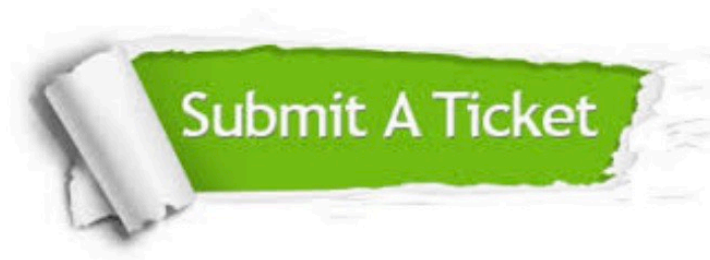
We provide exam PDF and VCE of Cisco, Microsoft, IBM, CompTIA, Oracle and other IT Certifications. You can view Vendor list of All Certification Exams offered:

<https://www.pass4itsure.com/allproducts>

Need Help

Please provide as much detail as possible so we can best assist you.

To update a previously submitted ticket:



 One Year Free Update <p>Free update is available within One Year after your purchase. After One Year, you will get 50% discounts for updating. And we are proud to boast a 24/7 efficient Customer Support system via Email.</p>	 Money Back Guarantee <p>To ensure that you are spending on quality products, we provide 100% money back guarantee for 30 days from the date of purchase.</p>	 Security & Privacy <p>We respect customer privacy. We use McAfee's security service to provide you with utmost security for your personal information & peace of mind.</p>
-----------------------------------------------------------------------------------------------------------------------------------------------------------------------------------------------------------------------------------------------------------------------------------------------------------------------------	---------------------------------------------------------------------------------------------------------------------------------------------------------------------------------------------------------------------------------------------------------	--------------------------------------------------------------------------------------------------------------------------------------------------------------------------------------------------------------------------------------------------------------------------------

Any charges made through this site will appear as Global Simulators Limited.

All trademarks are the property of their respective owners.

Copyright © pass4itsure, All Rights Reserved.