



# 70-689<sup>Q&As</sup>

Upgrading Your Skills to MCSA Windows 8

## Pass Microsoft 70-689 Exam with 100% Guarantee

Free Download Real Questions & Answers **PDF** and **VCE** file from:

<https://www.pass4itsure.com/70-689.html>

100% Passing Guarantee  
100% Money Back Assurance

Following Questions and Answers are all new published by Microsoft  
Official Exam Center

- ⚙ **Instant Download** After Purchase
- ⚙ **100% Money Back** Guarantee
- ⚙ **365 Days** Free Update
- ⚙ **800,000+** Satisfied Customers





### QUESTION 1

Your network contains a Microsoft Exchange Server 2013 organization. You have an Exchange ActiveSync policy that has the following settings configured: AllowRemoteDesktop AllowInternetSharing RequireDeviceEncryption MinDevicePasswordLength AllowSimpleDevicePassword

You need to identify which settings are applied to Windows RT 8.1 devices.

Which three settings should you identify? (Each correct answer presents part of the solution. Choose three.)

- A. AllowRemoteDesktop
- B. AllowSimpleDevicePassword
- C. RequireDeviceEncryption
- D. MinDevicePasswordLength
- E. AllowInternetSharing

Correct Answer: BCD

Windows 8\RT Supported Policy Parameters for EAS mailbox policies:

#### Exchange Server 2013

PasswordEnabled
AllowSimpleDevicePassword
MinDevicePasswordLength
MinDevicePasswordComplexCharacters
RequireDeviceEncryption
MaxInactivityTimeDeviceLock
DevicePasswordHistory
MaxDevicePasswordFailedAttempts
AllowNonProvisionableDevices
DevicePasswordExpiration

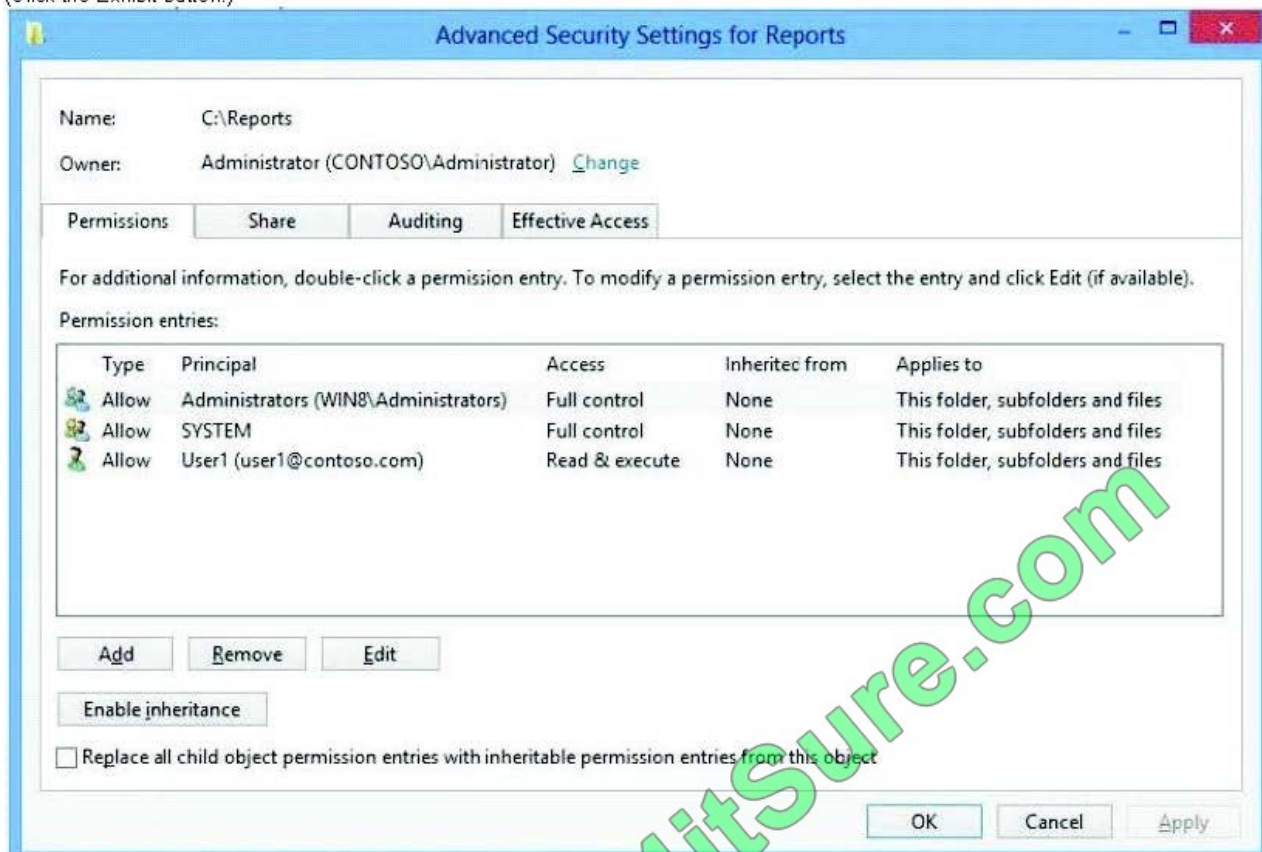
Reference: Supported Exchange ActiveSync policy parameters in Windows 8 and RT

### QUESTION 2

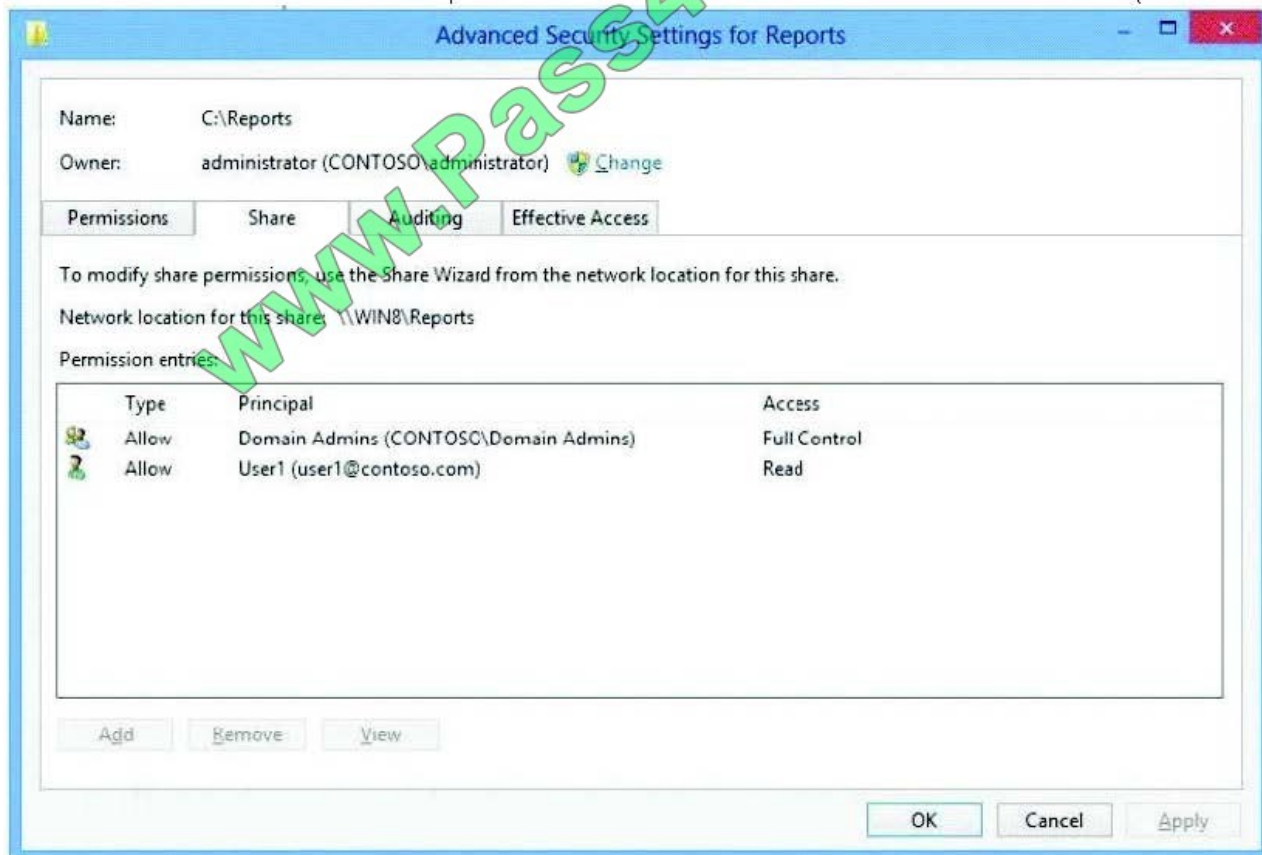
You support a desktop computer that runs Windows 8 Pro. The computer is joined to an Active Directory domain. The computer has a folder named C:\Reports. The folder NTFS permissions are shown in Exhibit 1.



(Click the Exhibit button.)



The folder is shared over the network with Read permission for a domain user account named User1 as shown in Exhibit 2. (Click the Exhibit button.)





(Click the Exhibit button.) The folder is shared over the network with Read permission for a domain user account named User1 as shown in Exhibit 2. (Click the Exhibit button.)

Members of the domain security group named Accountants must have access to the shared folder.

You need to assign the required permissions.

Which three actions should you perform in sequence? (To answer, move the appropriate actions from the list of actions to the answer area and arrange them in the correct order.)

Select and Place:

Answer Area

- Open the Sharing tab from the folder properties window.
- Open permission entry for User1.
- Add a condition for the Accountants group.
- Click the **Share...** button.
- Add the Accountants security group and grant it Read permission.
- Add a condition for a device group.
- Open advanced security settings for the folder.

Correct Answer:

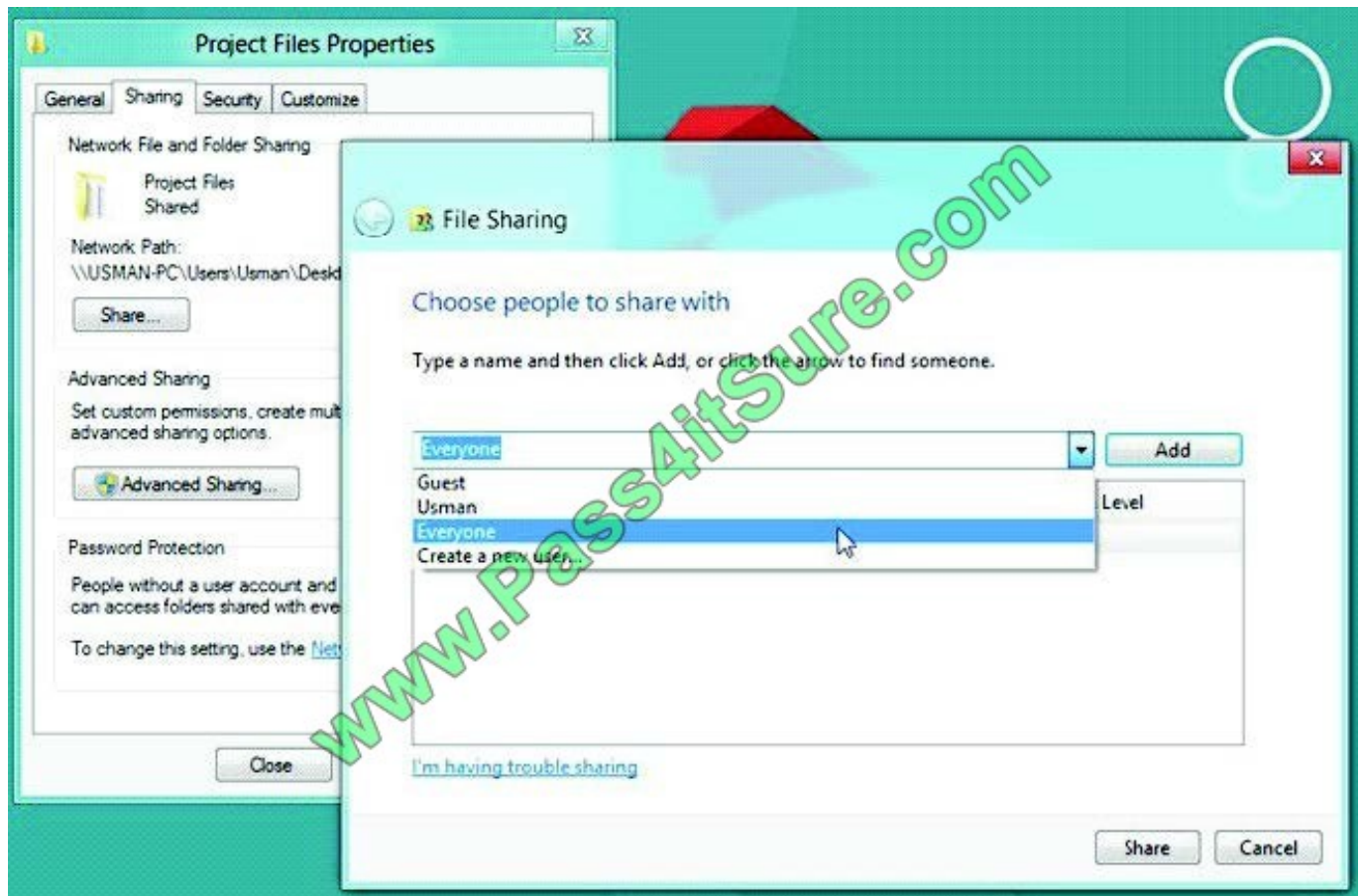
Answer Area

- Open the Sharing tab from the folder properties window.
- Click the **Share...** button.
- Add the Accountants security group and grant it Read permission.

- Open permission entry for User1.
- Add a condition for the Accountants group.
- Add a condition for a device group.
- Open advanced security settings for the folder.

**Share Folders From 'Users Profile' Locations and Local Drives** If you want to quickly share a folder residing in local drives or User Profile folders, open Properties dialog from right-click context menu, and then head over to Sharing tab. From Network File and Folder Sharing section, click Share to open

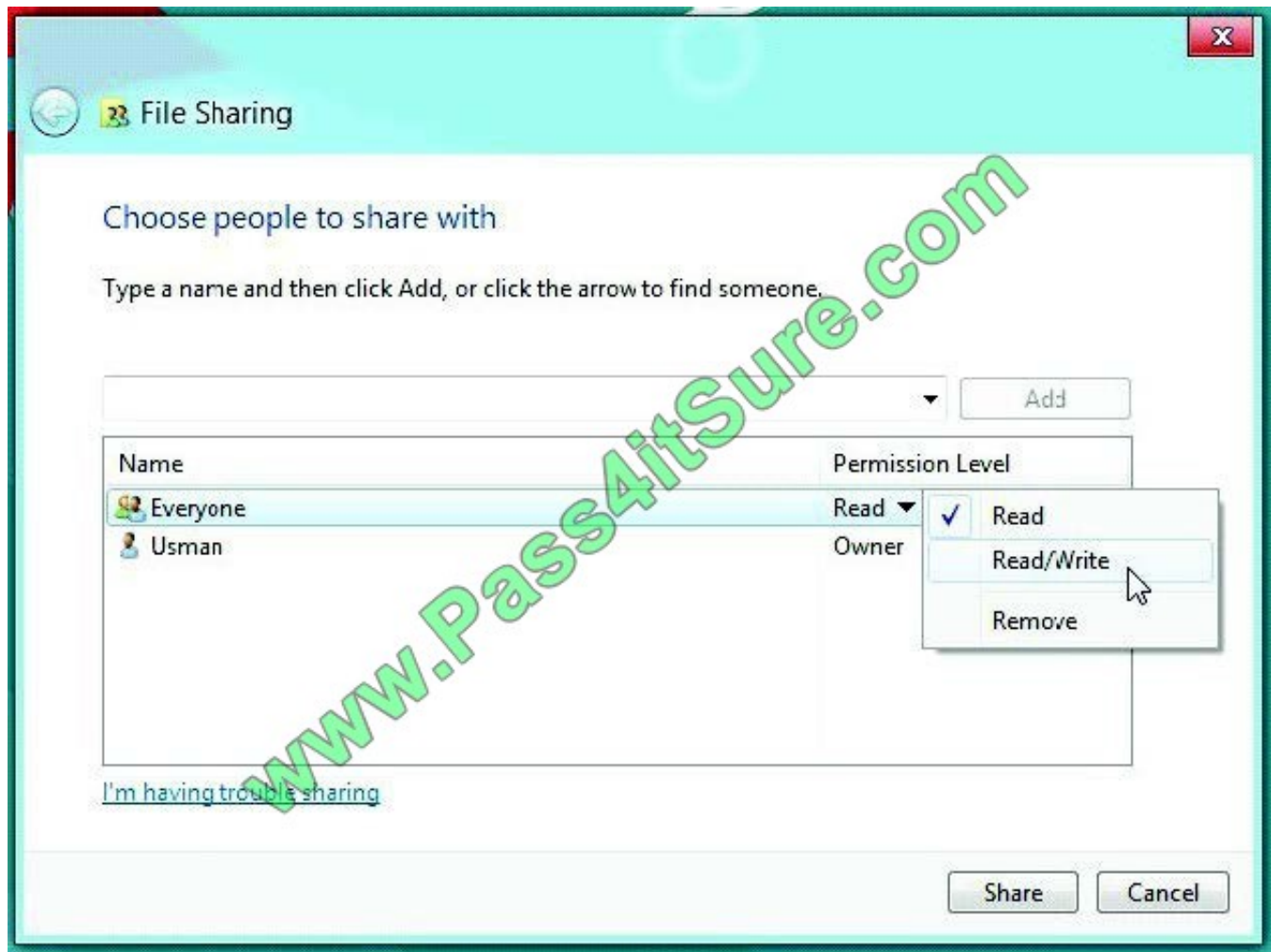




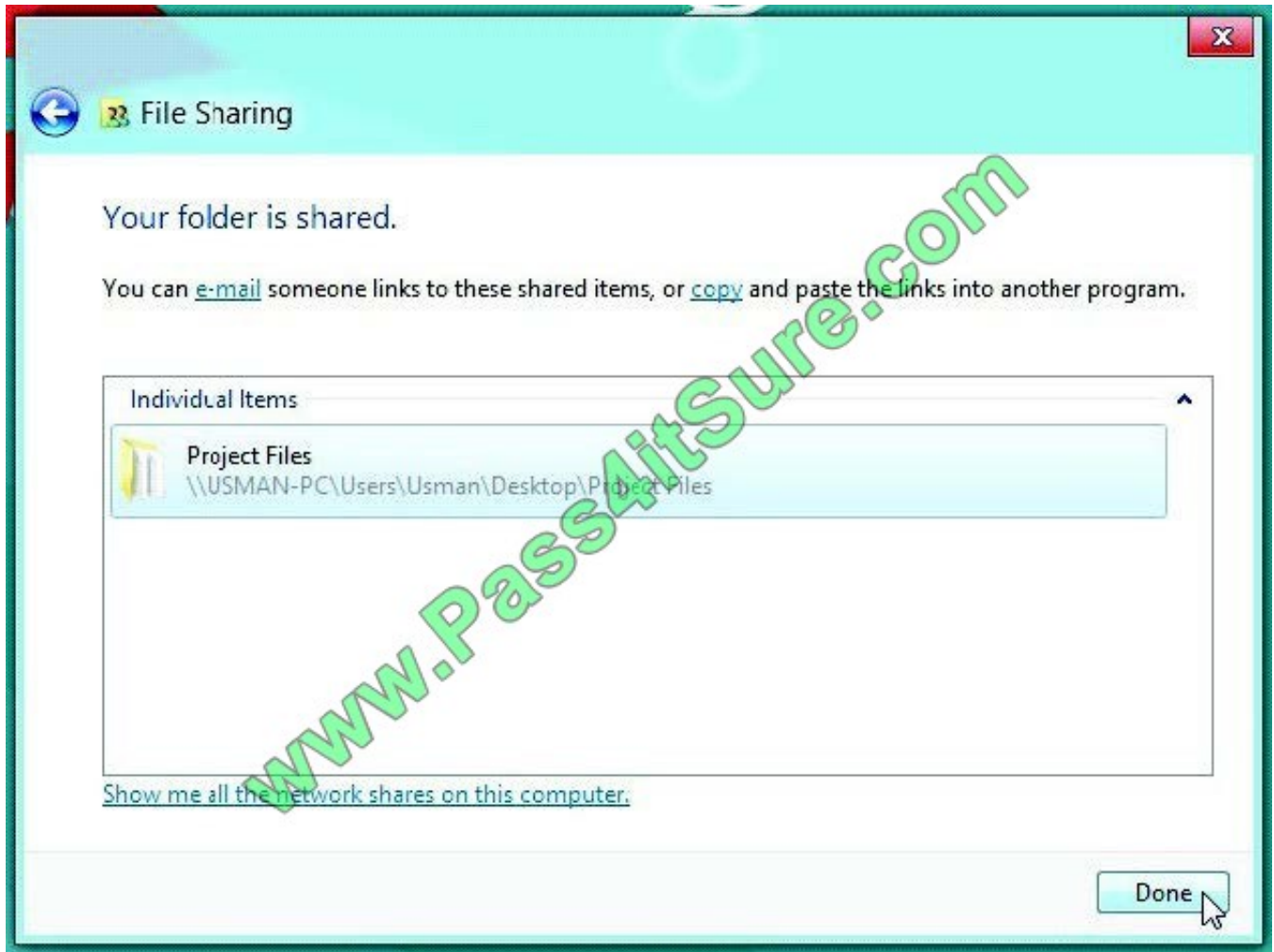
File Sharing dialog. Now, select Everyone from drop-down menu, and click Add.

This will add Everyone group in File Sharing list, and allow you to change folder access permission.

Using Read pull-down menu, you can give read and write permissions to users, and remove Everyone group from the File Sharing list.



Once done, click Share to share the folder on the network. It will open a separate dialog, allowing you to email and copy the shared folder link.



Now, you can access the shared folder from any PC connected on the network.

### QUESTION 3

Your computer runs Windows 8.

The drive on which your File History is stored is almost full.

You need to move the File History storage location to another drive.

Which three actions should you perform in sequence? (To answer, move the appropriate actions from the list of actions to the answer area and arrange them in the correct order.)

Select and Place:



Actions	Answer Area
Move the stored file history from the old location to the new location.	
Open File History from Windows Explorer.	
In the File History window, choose the option to change the File History folder.	
In the File History window, choose the option to change the File History drive.	
Browse to the new storage location.	
Open File History from Control Panel.	

Correct Answer:

Actions	Answer Area
	Move the stored file history from the old location to the new location.
Open File History from Windows Explorer.	In the File History window, choose the option to change the File History drive.
In the File History window, choose the option to change the File History folder.	Browse to the new storage location.
Open File History from Control Panel.	

#### QUESTION 4

A company has client computers that run Windows 7. Each employee has two client computers: one at work and one at home.

The company plans to deploy Windows 8.1 to all client computers. You are planning a deployment strategy.

You have the following requirements:





Minimize deployment time.

Ensure that the PC Reset and PC Refresh features can be utilized on all work computers.

You need to plan a deployment strategy that meets the requirements.

What should you do? (To answer, drag the appropriate installation method or methods to the correct location or locations in the answer area. Methods may be used once, more than once, or not at all. You may need to drag the split bar

between panes or scroll to view content.)

Select and Place:

Computer	Method
Work computer	Installation Method
Home computer	Installation Method

Correct Answer:

Computer	Method
Work computer	Install Windows 8.1 directly on the client computer.
Home computer	Start the client computer from a USB flash drive on which you have installed Windows To Go.

## QUESTION 5

You are troubleshooting a computer that runs Windows 8.1.

A third-party application no longer functions correctly.

You need to repair the application.



What should you do?

- A. Run the reset /f command and specify the application\\'s .msi file.
- B. Run the msixexec /f command and specify the application\\'s .msi file.
- C. Use File History to revert the application\\'s .msifile to a previous version.
- D. Run the replace command, specify the application\\'s .msi file as the source, and then specify the application\\'s original installation directory as the destination.

Correct Answer: B

Reference: [http://technet.microsoft.com/en-us/library/cc759262\(v=ws.10\).aspx](http://technet.microsoft.com/en-us/library/cc759262(v=ws.10).aspx) (search for `/f\`) Explanation: <http://technet.microsoft.com/en-us/library/cc759262%28v=ws.10%29.aspx> Msixexec (command-line options)

To repair a product Syntax msixexec /f [p][o][e][d][c][a][u][m][s][v]{Package | ProductCode}

[70-689 PDF Dumps](#)

[70-689 Practice Test](#)

[70-689 Exam Questions](#)



To Read the [Whole Q&As](#), please purchase the [Complete Version](#) from [Our website](#).

## Try our product !

100% Guaranteed Success

100% Money Back Guarantee

365 Days Free Update

Instant Download After Purchase

24x7 Customer Support

Average 99.9% Success Rate

More than 800,000 Satisfied Customers Worldwide

Multi-Platform capabilities - Windows, Mac, Android, iPhone, iPod, iPad, Kindle

We provide exam PDF and VCE of Cisco, Microsoft, IBM, CompTIA, Oracle and other IT Certifications. You can view Vendor list of All Certification Exams offered:

<https://www.pass4itsure.com/allproducts>

## Need Help

Please provide as much detail as possible so we can best assist you.

To update a previously submitted ticket:



 <b>One Year Free Update</b> <p>Free update is available within One Year after your purchase. After One Year, you will get 50% discounts for updating. And we are proud to boast a 24/7 efficient Customer Support system via Email.</p>	 <b>Money Back Guarantee</b> <p>To ensure that you are spending on quality products, we provide 100% money back guarantee for 30 days from the date of purchase.</p>	 <b>Security &amp; Privacy</b> <p>We respect customer privacy. We use McAfee's security service to provide you with utmost security for your personal information &amp; peace of mind.</p>
---	---	--

Any charges made through this site will appear as Global Simulators Limited.

All trademarks are the property of their respective owners.

Copyright © pass4itsure, All Rights Reserved.