



70-689^{Q&As}

Upgrading Your Skills to MCSA Windows 8

Pass Microsoft 70-689 Exam with 100% Guarantee

Free Download Real Questions & Answers **PDF** and **VCE** file from:

<https://www.pass4itsure.com/70-689.html>

100% Passing Guarantee
100% Money Back Assurance

Following Questions and Answers are all new published by Microsoft
Official Exam Center

-  **Instant Download** After Purchase
-  **100% Money Back** Guarantee
-  **365 Days** Free Update
-  **800,000+** Satisfied Customers



**QUESTION 1**

You administer desktop computers on your company network.

You want to deploy a WIM file of Windows 8 Enterprise to 15 desktop computers that have a third-party iSCSI adapter installed. The hardware vendor provided a device driver to support this adapter.

You need to update the image to ensure that the device driver is installed when you deploy the image.

What should you do?

- A. Download and run the imagex.exe tool and specify the /remount parameter.
- B. Run the dism.exe tool and specify the /append-image parameter.
- C. Download and run the drvload.exe tool and specify the path to the driver .inf file.
- D. Run the dism.exe tool and specify the /add-driver parameter.

Correct Answer: D

The driver servicing commands can be used on an offline image to add and remove drivers based on the INF file, and on a running operating system (online) to enumerate drivers. [http://technet.microsoft.com/en-us/library/dd799258\(v=ws.10\).aspx](http://technet.microsoft.com/en-us/library/dd799258(v=ws.10).aspx)

QUESTION 2

You support desktop computers and tablets that run Windows 8 Enterprise. All of the computers are able to connect to your company network from the Internet by using DirectAccess.

Your company wants to deploy a new application to the tablets. The deployment solution must meet the following requirements:

Users have offline access to the application only within the first seven days following their latest online session.

The application uses the least amount of disk space.

You need to deploy the new application to the tablets.

What should you do?

- A. Deploy the application as an Application Virtualization (App-V) package. Install the App-V client on the tablets.
- B. Deploy the application as a published application on the Remote Desktop server. Create a Remote Desktop connection on the tablets.
- C. Install the application on a local drive on the tablets.
- D. Install the application in a Windows To Go workspace.
- E. Install Hyper-V on tablets. Install the application on a virtual machine.
- F. Publish the application to Windows Store.



G. Install the application within a separate Windows 8 installation in a virtual hard disk (VHD) file. Configure the tablets with dual boot.

H. Install the application within a separate Windows 8 installation in a VHDX file. Configure tablets with dual boot.

Correct Answer: A

Microsoft Application Virtualization (App-V) enables enterprises to meet the needs of users and IT by empowering anywhere productivity and accelerated application deployment. App-V provides anywhere user access to applications that available on any authorized device without application installs. Virtual applications and user settings are preserved whether users are online or offline. App-V increases business agility through faster application deployment and updates with no user interruptions. It minimizes conflicts between applications, allowing enterprises to reduce application compatibility testing time. App-V together with Microsoft User State Virtualization (USV) provides users with a consistent experience and reliable access to applications and business data, no matter their location and connection to the Internet. <http://www.microsoft.com/en-us/windows/enterprise/products-and-technologies/virtualization/app-v.aspx>

QUESTION 3

Your computer runs Windows 8.

The drive on which your File History is stored is almost full.

You need to move the File History storage location to another drive.

Which three actions should you perform in sequence? (To answer, move the appropriate actions from the list of actions to the answer area and arrange them in the correct order.)

Select and Place:

Actions	Answer Area
Move the stored file history from the old location to the new location.	
Open File History from Windows Explorer.	
In the File History window, choose the option to change the File History folder.	
In the File History window, choose the option to change the File History drive.	
Browse to the new storage location.	
Open File History from Control Panel.	

Correct Answer:



Actions	Answer Area
	Move the stored file history from the old location to the new location.
Open File History from Windows Explorer.	In the File History window, choose the option to change the File History drive.
In the File History window, choose the option to change the File History folder.	Browse to the new storage location.
Open File History from Control Panel.	

QUESTION 4

A company has 100 client computers that run Windows 8. The client computers are connected to a corporate private network. Users are currently unable to connect from their home computers to their work computers by using Remote Desktop.

You need to ensure that users can remotely connect to their office computers by using Remote Desktop.

Users must not be able to access any other corporate network resource from their home computers.

What should you do?

- A. Configure a DirectAccess connection.
- B. Configure the Remote Desktop Gateway IP address in the advanced Remote Desktop Connection settings on each client.
- C. Configure the local resource settings of the Remote Desktop connection.
- D. Configure a Virtual Private Network connection.

Correct Answer: B

QUESTION 5

Your network contains an Active Directory domain. All client computers run Windows 8.1 Enterprise and are located in an organizational unit (OU) named WindowsSComputers.

The network has Windows Server Update Services (WSUS) installed. All of the computers are configured to receive



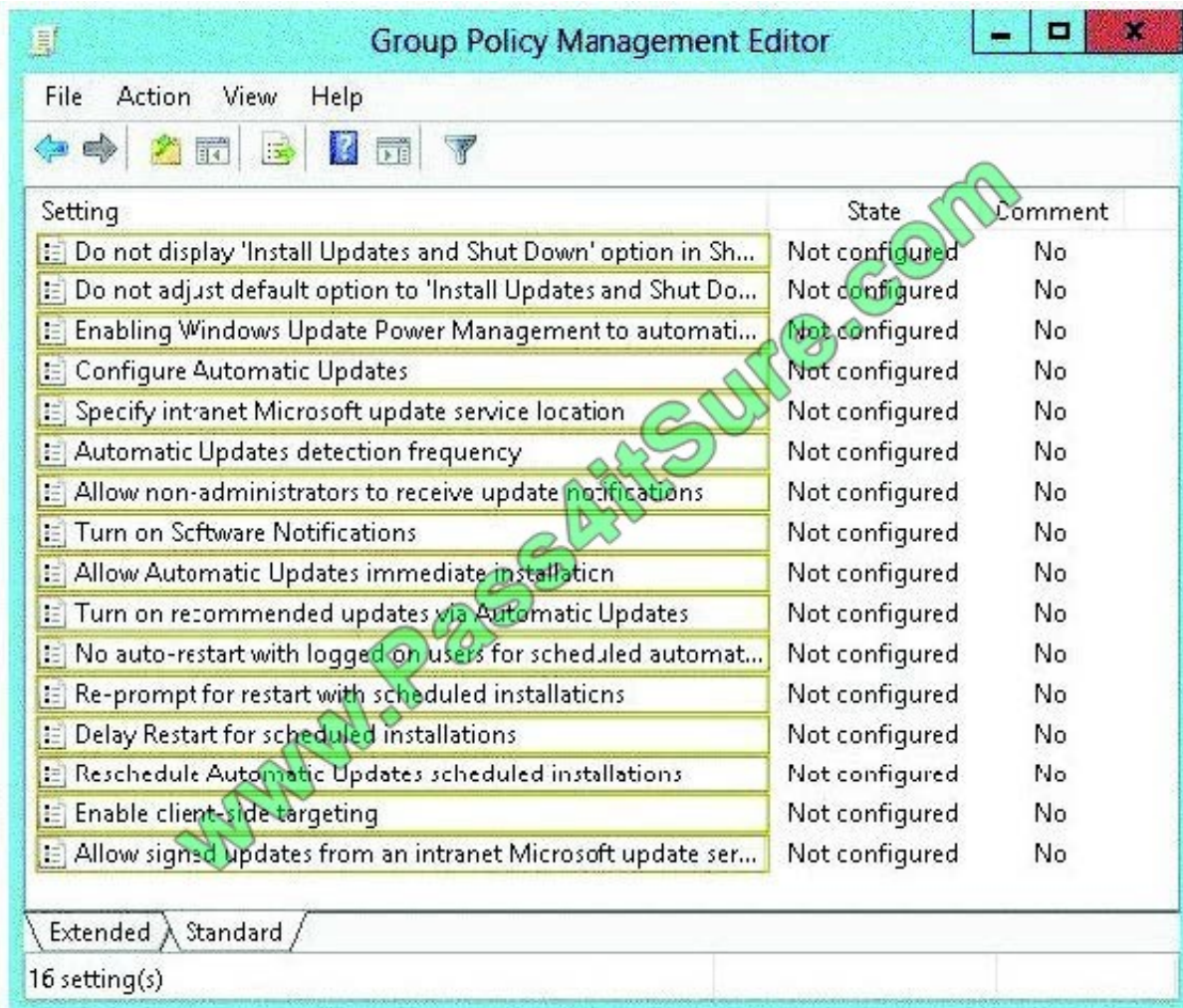
updates from WSUS.

The network administrator creates a new computer group named Win8Computers in WSUS.

You need to ensure that the Windows 8.1 computers receive all of the updates that are assigned to the WinSComputers computer group.

Which Group Policy setting should you configure? (To answer, select the appropriate setting in the answer area.)

Hot Area:



Correct Answer:



Setting	State	Comment
Do not display 'Install Updates and Shut Down' option in Sh...	Not configured	No
Do not adjust default option to 'Install Updates and Shut Do...	Not configured	No
Enabling Windows Update Power Management to automati...	Not configured	No
Configure Automatic Updates	Not configured	No
Specify intranet Microsoft update service location	Not configured	No
Automatic Updates detection frequency	Not configured	No
Allow non-administrators to receive update notifications	Not configured	No
Turn on Software Notifications	Not configured	No
Allow Automatic Updates immediate installaticn	Not configured	No
Turn on recommended updates via Automatic Updates	Not configured	No
No auto-restart with logged on users for scheduled automat...	Not configured	No
Re-prompt for restart with scheduled installaticns	Not configured	No
Delay Restart for scheduled installations	Not configured	No
Reschedule Automatic Updates scheduled installations	Not configured	No
Enable client-side targeting	Not configured	No
Allow signed updates from an intranet Microsoft update ser...	Not configured	No

Extended Standard

16 setting(s)

Use the WSUS console to specify whether you will use client-side or server-side targeting. With server-side targeting, you manually add each computer to its group. With client-side targeting, you automatically assign the computers by using Group Policy or registry keys. [http://technet.microsoft.com/en-us/library/dd939829\(v=ws.10\).aspx](http://technet.microsoft.com/en-us/library/dd939829(v=ws.10).aspx)

[70-689 Practice Test](#)

[70-689 Study Guide](#)

[70-689 Braindumps](#)



To Read the [Whole Q&As](#), please purchase the [Complete Version](#) from [Our website](#).

Try our product !

100% Guaranteed Success

100% Money Back Guarantee

365 Days Free Update

Instant Download After Purchase

24x7 Customer Support

Average 99.9% Success Rate

More than 800,000 Satisfied Customers Worldwide

Multi-Platform capabilities - [Windows](#), [Mac](#), [Android](#), [iPhone](#), [iPod](#), [iPad](#), [Kindle](#)

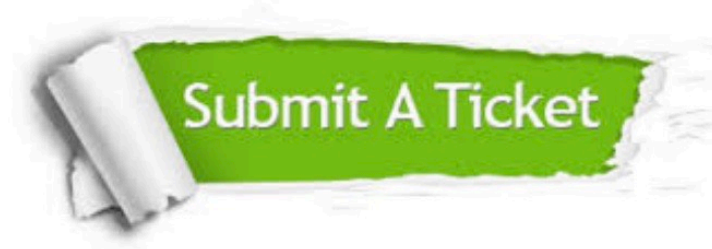
We provide exam PDF and VCE of Cisco, Microsoft, IBM, CompTIA, Oracle and other IT Certifications. You can view Vendor list of All Certification Exams offered:

<https://www.pass4itsure.com/allproducts>

Need Help

Please provide as much detail as possible so we can best assist you.

To update a previously submitted ticket:



 <p>One Year Free Update Free update is available within One Year after your purchase. After One Year, you will get 50% discounts for updating. And we are proud to boast a 24/7 efficient Customer Support system via Email.</p>	 <p>Money Back Guarantee To ensure that you are spending on quality products, we provide 100% money back guarantee for 30 days from the date of purchase.</p>	 <p>Security & Privacy We respect customer privacy. We use McAfee's security service to provide you with utmost security for your personal information & peace of mind.</p>
---	---	--

Any charges made through this site will appear as Global Simulators Limited.

All trademarks are the property of their respective owners.

Copyright © pass4itsure, All Rights Reserved.