



# 70-686<sup>Q&As</sup>

Windows 7, Enterprise Desktop Administrator

## Pass Microsoft 70-686 Exam with 100% Guarantee

Free Download Real Questions & Answers **PDF** and **VCE** file from:

<https://www.pass4itsure.com/70-686.html>

100% Passing Guarantee  
100% Money Back Assurance

Following Questions and Answers are all new published by Microsoft  
Official Exam Center

- ⚙ **Instant Download** After Purchase
- ⚙ **100% Money Back** Guarantee
- ⚙ **365 Days** Free Update
- ⚙ **800,000+** Satisfied Customers



**QUESTION 1**

Your network has 1,000 client computers that run Windows 7.

You need to install an application, in the Local System account context, on the client computers.

What are two possible ways to achieve this goal? (Each correct answer presents a complete solution. Choose two.)

- A. Configure a logon script.
- B. Configure a startup script.
- C. Configure a shutdown script.
- D. Configure a logoff script.

Correct Answer: BC

---

**QUESTION 2**

You are deploying an App-V client application to the New York office. You need to ensure that the application will be installed at a specific time. What should you use to deploy the application?

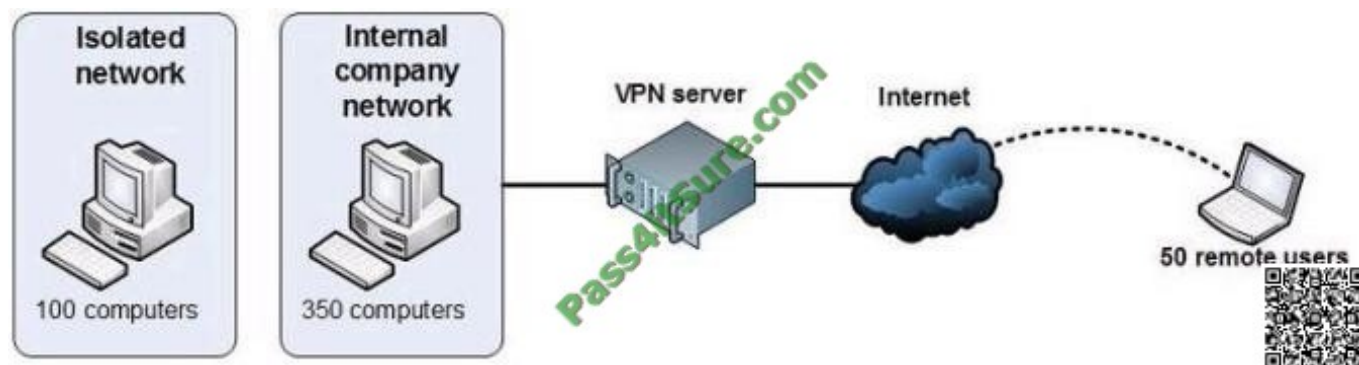
- A. ConfigMgr
- B. a Group Policy object (GPO) with a software installation policy.
- C. MED-V
- D. Microsoft Deployment Toolkit

Correct Answer: A

---

**QUESTION 3**

Your network is configured as shown in the following diagram.



You are planning to deploy Windows 7.



You have the following requirements:

?Use BitLocker on all computers in the isolated network.

?Provide DirectAccess on all portable computers.

?Use the Key Management Service (KMS) to activate all client computers.

You need to plan a client computer licensing strategy that meets the requirements.

What should you do?

A. License 500 copies of Windows 7 Ultimate.

B. License 500 copies of Windows 7 Enterprise.

C. License 350 copies of Windows 7 Professional, license 150 copies of Windows 7 Ultimate, and purchase Software Assurance for the Windows 7 Professional licenses.

D. License 350 copies of Windows 7 Enterprise, and license 150 copies of Windows 7 Ultimate.

Correct Answer: B

hints:

Direct Access only available for Ultimate and Enterprise only.

Company should use Enterprise version

---

#### QUESTION 4

You create a Windows 7 deployment image that includes custom Internet Explorer branding and search providers.

Your company decides to deploy all custom settings by using Group Policy.

You need to restore the Internet Explorer settings in the deployment image to the Microsoft default settings.

Which two actions should you perform? (Each correct answer presents part of the solution.

Choose two.)

A. Use the Reset Internet Explorer Settings (RIES) feature, and run the Remove Branding process on the deployment image.

B. Update the Internet Explorer Maintenance policy processing Group Policy object (GPO) settings for all computers.

C. Update the Internet Explorer Manage Add-ons settings for all computers.

D. Use the Reset Internet Explorer Settings (RIES) feature, and run the Reset process on the deployment image.

Correct Answer: AD

Reset Internet Explorer settings Deletes all temporary files, disables browser add-ons, and resets all the changed settings to factory settings. It can be used if the browser is in an unusable state.

[http://en.wikipedia.org/wiki/Internet\\_Explorer\\_7](http://en.wikipedia.org/wiki/Internet_Explorer_7)



## QUESTION 5

Your company has client computers that run Windows XP Professional.

You are planning to install Windows 7 Enterprise on the existing client computers.

You have the following requirements:

You need to design a user state migration strategy that supports the requirements.

What should you do?

- A. Use a hard-link migration store.
- B. Perform an offline migration by using Windows.old.
- C. Use a compressed migration store.
- D. Perform an offline migration by using Windows PE.

Correct Answer: C

Compressed migration

The compressed migration store is a single image file that contains all files being migrated and a catalog file.

This image file is often encrypted and protected with a password, and cannot be navigated with Windows Explorer.

[http://technet.microsoft.com/en-us/library/dd560795\(v=ws.10\).aspx](http://technet.microsoft.com/en-us/library/dd560795(v=ws.10).aspx)

[Latest 70-686 Dumps](#)

[70-686 Study Guide](#)

[70-686 Braindumps](#)



To Read the [Whole Q&As](#), please purchase the [Complete Version](#) from [Our website](#).

## Try our product !

100% Guaranteed Success

100% Money Back Guarantee

365 Days Free Update

Instant Download After Purchase

24x7 Customer Support

Average 99.9% Success Rate

More than 800,000 Satisfied Customers Worldwide

Multi-Platform capabilities - [Windows](#), [Mac](#), [Android](#), [iPhone](#), [iPod](#), [iPad](#), [Kindle](#)

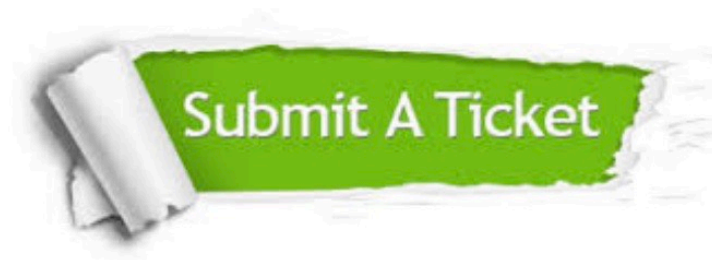
We provide exam PDF and VCE of Cisco, Microsoft, IBM, CompTIA, Oracle and other IT Certifications. You can view Vendor list of All Certification Exams offered:

<https://www.pass4itsure.com/allproducts>

## Need Help

Please provide as much detail as possible so we can best assist you.

To update a previously submitted ticket:



 <b>One Year Free Update</b> <p>Free update is available within One Year after your purchase. After One Year, you will get 50% discounts for updating. And we are proud to boast a 24/7 efficient Customer Support system via Email.</p>	 <b>Money Back Guarantee</b> <p>To ensure that you are spending on quality products, we provide 100% money back guarantee for 30 days from the date of purchase.</p>	 <b>Security &amp; Privacy</b> <p>We respect customer privacy. We use McAfee's security service to provide you with utmost security for your personal information &amp; peace of mind.</p>
-----------------------------------------------------------------------------------------------------------------------------------------------------------------------------------------------------------------------------------------------------------------------------------------------------------------------------	---------------------------------------------------------------------------------------------------------------------------------------------------------------------------------------------------------------------------------------------------------	--------------------------------------------------------------------------------------------------------------------------------------------------------------------------------------------------------------------------------------------------------------------------------

Any charges made through this site will appear as Global Simulators Limited.

All trademarks are the property of their respective owners.

Copyright © pass4itsure, All Rights Reserved.