



# 70-685<sup>Q&As</sup>

Windows 7, Enterprise Desktop Support Technician

## Pass Microsoft 70-685 Exam with 100% Guarantee

Free Download Real Questions & Answers **PDF** and **VCE** file from:

<https://www.pass4itsure.com/70-685.html>

100% Passing Guarantee  
100% Money Back Assurance

Following Questions and Answers are all new published by Microsoft  
Official Exam Center

- ⚙ **Instant Download** After Purchase
- ⚙ **100% Money Back** Guarantee
- ⚙ **365 Days** Free Update
- ⚙ **800,000+** Satisfied Customers



**QUESTION 1**

A new client computer was joined recently to the company domain. However, it does not have the latest Windows updates installed.

You need to ensure that the client computer uses the company's enterprise update distribution servers to install the latest Windows updates immediately.

What should you do?

- A. Start the Windows Installer service.
- B. Run the `wuaclt.exe /resetauthorization` command.
- C. Run the `wuaclt.exe /detectnow` command.
- D. Run the `net start TrustedInstaller` command.

Correct Answer: C

[http://technet.microsoft.com/en-us/library/cc708617\(Ws.10\).aspx](http://technet.microsoft.com/en-us/library/cc708617(Ws.10).aspx)

---

**QUESTION 2**

All client computers on your company network run Windows 7 and are members of an Active Directory Domain Services domain.

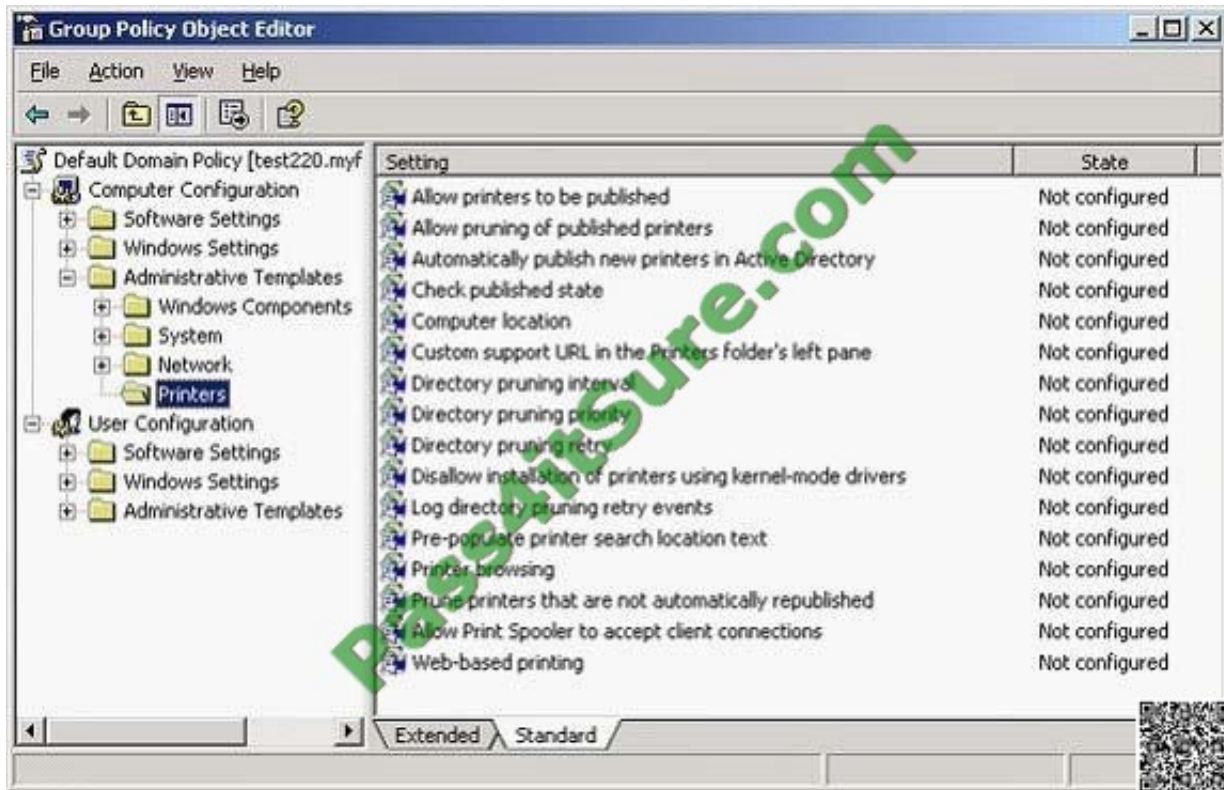
You deploy network printers.

You need to ensure that employees are able to find these printers.

What should you do first?

- A. Ensure that your print servers include Windows 7 print drivers.
- B. In the Location Aware Printing applet, choose the Change my default printer when I change networks setting.
- C. Create a group policy to enable the Automatically publish new printers in Active Directory policy.
- D. Create a group policy to enable the Prune printers that are not automatically republished policy. In the Prune non-republishing printers drop-down list, select the Whenever printer is not found option.

Correct Answer: C



### QUESTION 3

All client computers on your company network run Windows 7 and are members of an Active Directory Domain Services (AD DS) domain. The help desk reports that several computers that run Windows 7 Enterprise have bad sectors on their

hard disks.

You need to minimize the loss of data on the computers caused by storing data on the bad sectors.

Which command should you run?

- A. `chkdsk.exe /r`
- B. `chkdsk.exe /f`
- C. `defrag.exe /c`
- D. `defrag.exe /x`

Correct Answer: A

### QUESTION 4

You install an application named App01 on a client computer running Windows 7. The application automatically appears



in the system tray.

You need to establish if the application is slowing down the boot process. You must keep all device drivers functioning.

Which two actions should you perform in sequence?

(To answer, move the appropriate actions from the list of actions to the answer area and arrange them in the correct order.)

Select and Place:

Reboot the computer.

From the **Advanced Boot Options** menu, enable **Safe Mode**.

From the **Advanced Boot Options** menu, enable **Debugging Mode**.

Using msconfig.exe, enable **Diagnostic startup**.

Using msconfig.exe, disable App01 from starting during the boot process.

Using msconfig.exe, disable all applications from starting during the boot process.

www.Pass4itSure.com

Correct Answer:

Using msconfig.exe, disable App01 from starting during the boot process.

Reboot the computer.

www.Pass4itSure.com

## QUESTION 5



All client computers on a company's network are members of an Active Directory Domain Services domain.

The Finance team uses Remote Desktop to access Windows 7 virtual machines that are hosted on a server that runs Windows Server 2008 Hyper-V.

The team members receive the following error message when they attempt to log on to the virtual machines: "The trust relationship between this workstation and the primary domain failed."

You discover that the Hyper-V server was recently restored from a backup.

You need to ensure that the team members can log on to the virtual machines.

Which four actions should you perform in sequence on each virtual machine?

(To answer, move the appropriate actions from the list of actions to the answer area and arrange them in the correct order.)

Select and Place:

Modify the computer name.

Run the System Restore tool.

Join the computer to the domain.

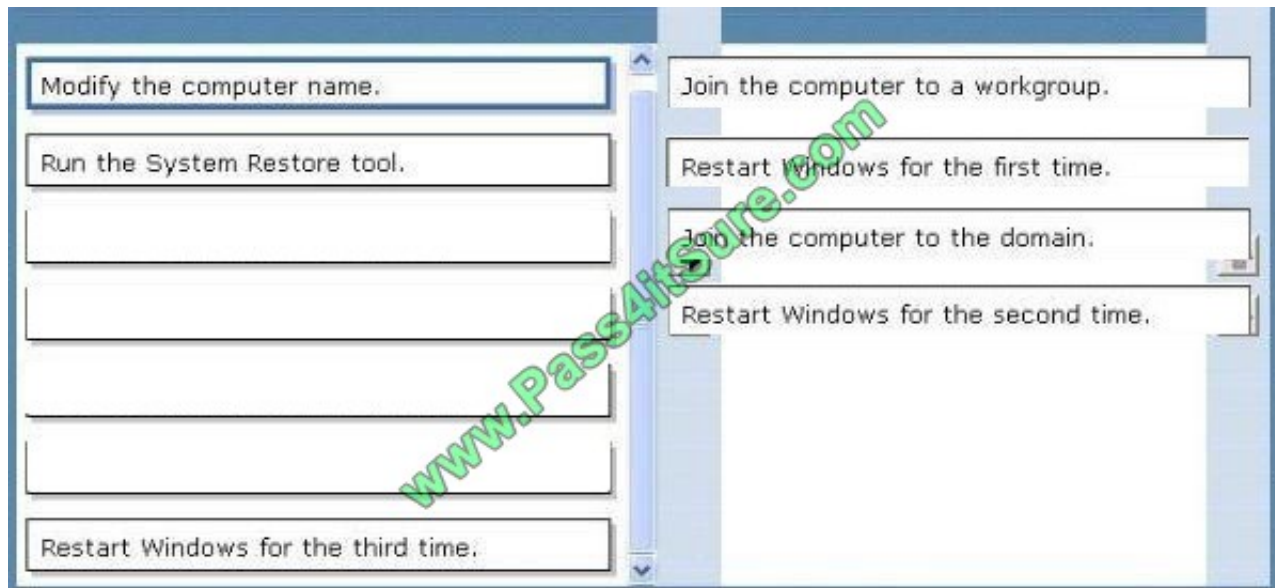
Join the computer to a workgroup.

Restart Windows for the first time.

Restart Windows for the second time.

Restart Windows for the third time.

Correct Answer:



[Latest 70-685 Dumps](#)

[70-685 Study Guide](#)

[70-685 Braindumps](#)





To Read the [Whole Q&As](#), please purchase the [Complete Version](#) from [Our website](#).

## Try our product !

100% Guaranteed Success

100% Money Back Guarantee

365 Days Free Update

Instant Download After Purchase

24x7 Customer Support

Average 99.9% Success Rate

More than 800,000 Satisfied Customers Worldwide

Multi-Platform capabilities - [Windows](#), [Mac](#), [Android](#), [iPhone](#), [iPod](#), [iPad](#), [Kindle](#)

We provide exam PDF and VCE of Cisco, Microsoft, IBM, CompTIA, Oracle and other IT Certifications. You can view Vendor list of All Certification Exams offered:

<https://www.pass4itsure.com/allproducts>

## Need Help

Please provide as much detail as possible so we can best assist you.

To update a previously submitted ticket:



 <b>One Year Free Update</b> <p>Free update is available within One Year after your purchase. After One Year, you will get 50% discounts for updating. And we are proud to boast a 24/7 efficient Customer Support system via Email.</p>	 <b>Money Back Guarantee</b> <p>To ensure that you are spending on quality products, we provide 100% money back guarantee for 30 days from the date of purchase.</p>	 <b>Security &amp; Privacy</b> <p>We respect customer privacy. We use McAfee's security service to provide you with utmost security for your personal information &amp; peace of mind.</p>
-----------------------------------------------------------------------------------------------------------------------------------------------------------------------------------------------------------------------------------------------------------------------------------------------------------------------------	---------------------------------------------------------------------------------------------------------------------------------------------------------------------------------------------------------------------------------------------------------	--------------------------------------------------------------------------------------------------------------------------------------------------------------------------------------------------------------------------------------------------------------------------------

Any charges made through this site will appear as Global Simulators Limited.

All trademarks are the property of their respective owners.

Copyright © pass4itsure, All Rights Reserved.