



70-680^{Q&As}

Windows 7 Configuring

Pass Microsoft 70-680 Exam with 100% Guarantee

Free Download Real Questions & Answers **PDF** and **VCE** file from:

<https://www.pass4itsure.com/70-680.html>

100% Passing Guarantee
100% Money Back Assurance

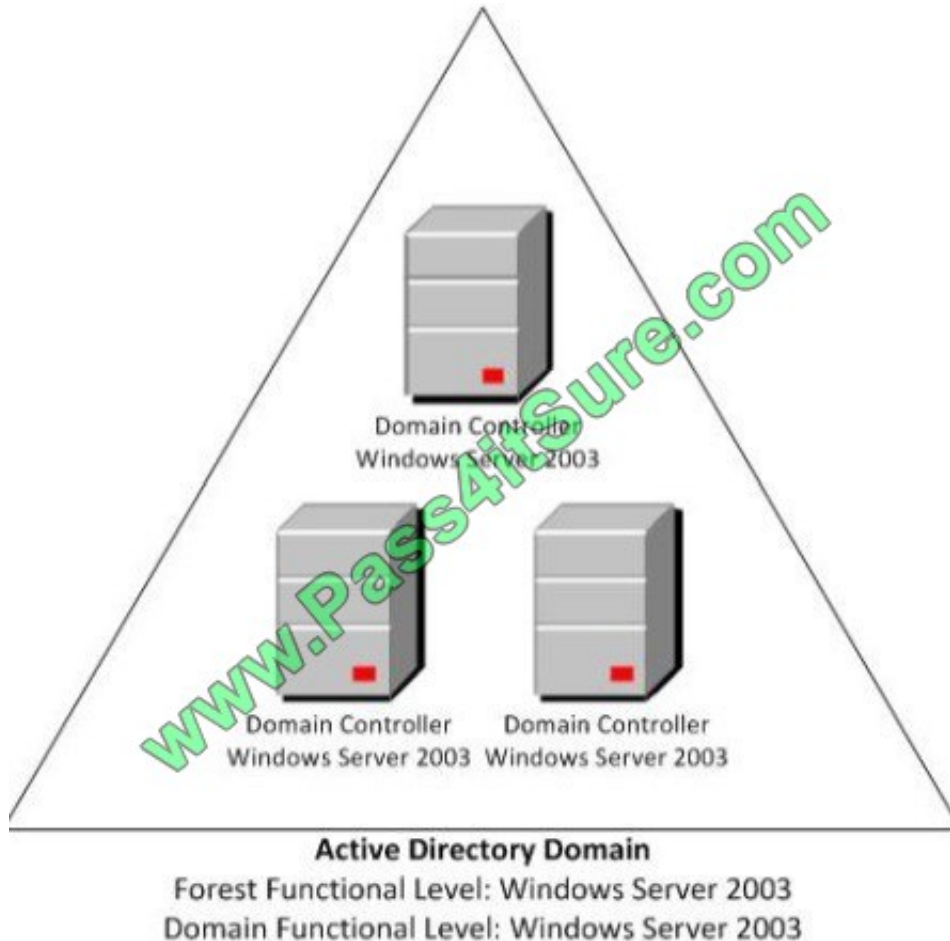
Following Questions and Answers are all new published by Microsoft
Official Exam Center

- ⚙ **Instant Download** After Purchase
- ⚙ **100% Money Back** Guarantee
- ⚙ **365 Days** Free Update
- ⚙ **800,000+** Satisfied Customers



**QUESTION 1**

A company has an Active Directory forest which is shown in the following graphic.



The company's client computers run Windows 7. You deploy BitLocker Drive Encryption on all the client computers.

You need to configure BitLocker Drive Encryption to back up recovery information to Active Directory for BitLocker protected drives and the Trusted Platform Module (TPM).

Which actions should you perform in sequence? (To answer, move the appropriate actions from the list of actions to the answer area and arrange them in the correct order.)

Select and Place:



Actions	Answer Area
Configure Group Policy to enable backup of BitLocker and TPM recovery information in Active Directory	
Add an Access Control Entry (ACE) to allow TPM recovery information to be backed up.	
Add an Access Control List (ACL) to allow TPM recovery information to be backed up.	
Extend the Active Directory schema with BitLocker and TPM attributes.	
Raise the domain functional level to Windows Server 2008.	
Raise the forest functional level to Windows Server 2008.	

Correct Answer:

Actions	Answer Area
	Extend the Active Directory schema with BitLocker and TPM attributes.
	Add an Access Control Entry (ACE) to allow TPM recovery information to be backed up.
Add an Access Control List (ACL) to allow TPM recovery information to be backed up.	Configure Group Policy to enable backup of BitLocker and TPM recovery information in Active Directory
Raise the domain functional level to Windows Server 2008.	
Raise the forest functional level to Windows Server 2008.	

Ref: [http://technet.microsoft.com/en-us/library/cc766015\(v=WS.10\).aspx](http://technet.microsoft.com/en-us/library/cc766015(v=WS.10).aspx)

QUESTION 2

You have a netbook computer that runs Windows 7. The computer has a single 30-GB partition that has 10 GB of free space. You need to create a system image of the computer by using Windows Backup.

You must achieve this goal by using the minimum amount of time. What should you do first?

- A. Attach an external hard disk.
- B. Attach an external DVD burner.



- C. Convert the local hard disk to a GPT disk.
- D. Create and attach a virtual hard drive (VHD).

Correct Answer: A

Scheduling Backups with the Backup And Restore Console Windows 7 Backup uses shadow copies to take a snapshot of your files, allowing the backup to completely back up files even if they are open. Backups are configured and scheduled by using the Backup And Restore console under System And Security in Control Panel. You can select the following types of backup destination:

An external hard drive External hard drives are more expensive to purchase than internal hard drives, although you need to balance this against the cost of fitting the internal drive. They can be removed and stored in a secure location. However, they are typically slower than internal hard drives and tend to be less reliable, mainly because they are by default formatted using FAT rather than NTFS. You cannot use an external hard drive for a System Image backup unless you convert its filing system to NTFS.

Because it is easily removable, it is more likely that an external hard drive will be missing when a scheduled backup is required.

QUESTION 3

You have two computers named Computer1 and Computer2 that run Windows 7. You connect from Computer1 to Computer2 by using Remote Desktop. You discover that you cannot copy any files between the computers during the Remote Desktop session.

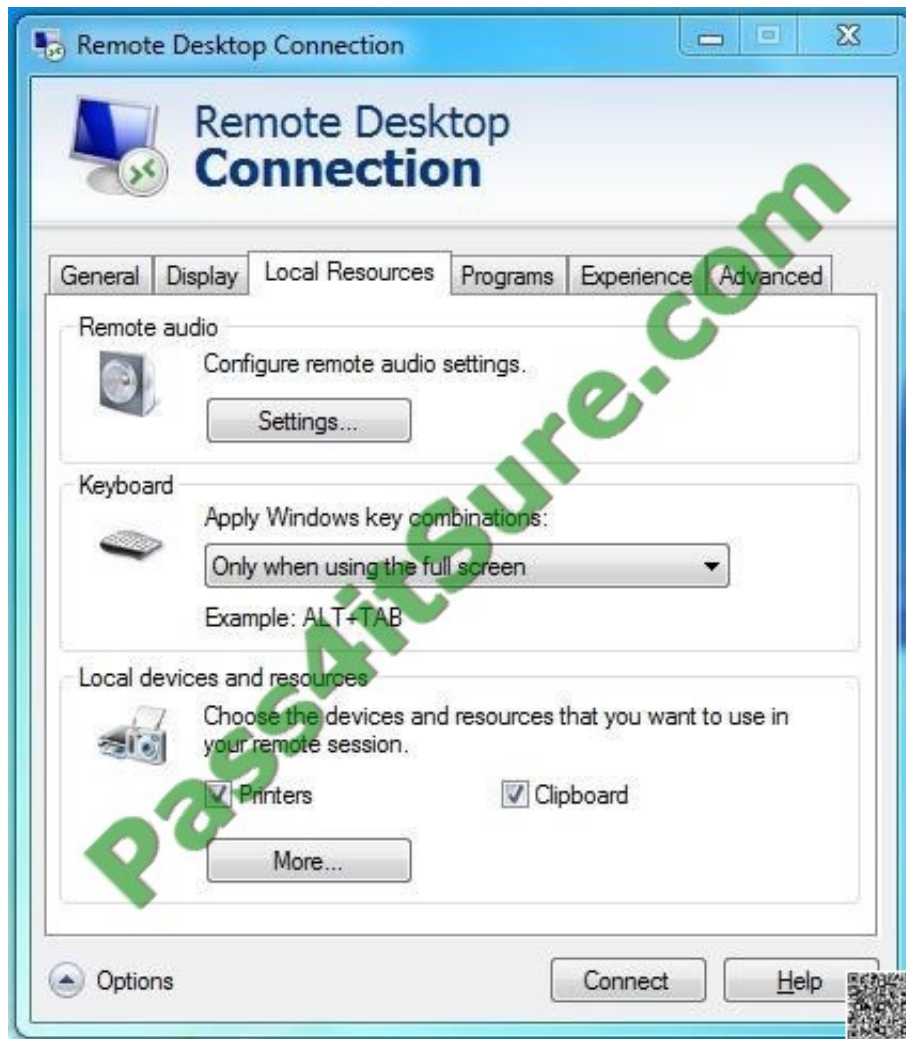
You need to ensure that you can copy files between the computers during the Remote Desktop session.

What should you do?

- A. On Computer1, open Windows Firewall and allow file and printer sharing.
- B. On Computer2, open Windows Firewall and allow file and printer sharing.
- C. On Computer1, open Remote Desktop Connection and configure the Local devices and resources setting.
- D. On Computer2, open Remote Desktop Connection and configure the Local devices and resources setting.

Correct Answer: C

How can I use my devices and resources in a Remote Desktop session? Redirecting a device on your computer makes it available for use in a Remote Desktop session. If you have a recent version of Remote Desktop, you can redirect most devices, including printers, smart cards, serial ports, drives, Plug and Play devices, media players based on the Media Transfer Protocol (MTP), and digital cameras based on the Picture Transfer Protocol (PTP). Some USB devices can be redirected, and you can also redirect your Clipboard.





QUESTION 4

You use a computer that has Windows 7 SP1 installed and has a folder named C:\Data. The active network connection for the computer is configured as Public.

You assign User1 to a local group called DataUsers. The group has been granted Read NTFS permissions for the folder.

User1 browses to the shared folder across the network and receives the following error message:

"Access is Denied."

You need to ensure that the user can download files from the shared folder.

What should you do?

- A. Allow file and printer sharing through Windows Firewall.
- B. Change the network location of the computer from a Public network to a Home or Work network.
- C. From the Security settings of the C:\Data folder, assign the Full Control NTFS permissions to User1.
- D. From the Advanced Sharing settings of the folder, assign the Read share permission to User1.



E. From the Advanced Sharing permissions, enable caching.

Correct Answer: D

QUESTION 5

You capture a Windows Image (.wim) file from a reference computer.

You want to use Windows Deployment Services (WDS) in an unattended mode to deploy the image file to target desktops.

You need to encrypt an administrator account password in the answer file used for the image deployment.

What should you do? (To answer, move the appropriate actions from the list of actions to the answer area and arrange them in the correct order.)

Select and Place:

Actions

Open the answer file.

Unmount the image file.

Build an update package.

Set the option to Hide Sensitive Data.

Apply update package to the image file.

Launch Windows System Image Manager.

Launch DISM.exe and mount the WIM file.

Run the ImageX tool and create a configuration file.

Answer Area

Correct Answer:



Actions

Unmount the image file.
Build an update package.
Apply update package to the image file.
Launch DISM.exe and mount the WIM file.
Run the ImageX tool and create a configuration file.

Answer Area

Launch Windows System Image Manager.
Open the answer file.
Set the option to Hide Sensitive Data.

[70-680 VCE Dumps](#)

[70-680 Practice Test](#)

[70-680 Exam Questions](#)



To Read the [Whole Q&As](#), please purchase the [Complete Version](#) from [Our website](#).

Try our product !

100% Guaranteed Success

100% Money Back Guarantee

365 Days Free Update

Instant Download After Purchase

24x7 Customer Support

Average 99.9% Success Rate

More than 800,000 Satisfied Customers Worldwide

Multi-Platform capabilities - [Windows](#), [Mac](#), [Android](#), [iPhone](#), [iPod](#), [iPad](#), [Kindle](#)

We provide exam PDF and VCE of Cisco, Microsoft, IBM, CompTIA, Oracle and other IT Certifications. You can view Vendor list of All Certification Exams offered:

<https://www.pass4itsure.com/allproducts>

Need Help

Please provide as much detail as possible so we can best assist you.

To update a previously submitted ticket:



 One Year Free Update <p>Free update is available within One Year after your purchase. After One Year, you will get 50% discounts for updating. And we are proud to boast a 24/7 efficient Customer Support system via Email.</p>	 Money Back Guarantee <p>To ensure that you are spending on quality products, we provide 100% money back guarantee for 30 days from the date of purchase.</p>	 Security & Privacy <p>We respect customer privacy. We use McAfee's security service to provide you with utmost security for your personal information & peace of mind.</p>
-----------------------------------------------------------------------------------------------------------------------------------------------------------------------------------------------------------------------------------------------------------------------------------------------------------------------------	---------------------------------------------------------------------------------------------------------------------------------------------------------------------------------------------------------------------------------------------------------	--------------------------------------------------------------------------------------------------------------------------------------------------------------------------------------------------------------------------------------------------------------------------------

Any charges made through this site will appear as Global Simulators Limited.

All trademarks are the property of their respective owners.

Copyright © pass4itsure, All Rights Reserved.