



70-662^{Q&As}

TS: Microsoft Exchange Server

Pass Microsoft 70-662 Exam with 100% Guarantee

Free Download Real Questions & Answers **PDF** and **VCE** file from:

<https://www.pass4itsure.com/70-662.html>

100% Passing Guarantee
100% Money Back Assurance

Following Questions and Answers are all new published by Microsoft
Official Exam Center

-  **Instant Download** After Purchase
-  **100% Money Back** Guarantee
-  **365 Days** Free Update
-  **800,000+** Satisfied Customers





QUESTION 1

Your network contains an Active Directory forest named contoso.com. The forest contains an Active Directory site named Site1.

You have an Exchange Server 2010 Service Pack 1 (SP1) organization.

You have a Client Access Server named Server1.

You need to enable Outlook Anywhere on Server1.

Which feature should you install on Server1 before you enable Outlook Anywhere? To answer, select the appropriate feature in the answer area.

Hot Area:

The screenshot shows the 'Add Features Wizard' window with the 'Select Features' step. The 'Features' list on the left includes the following items:

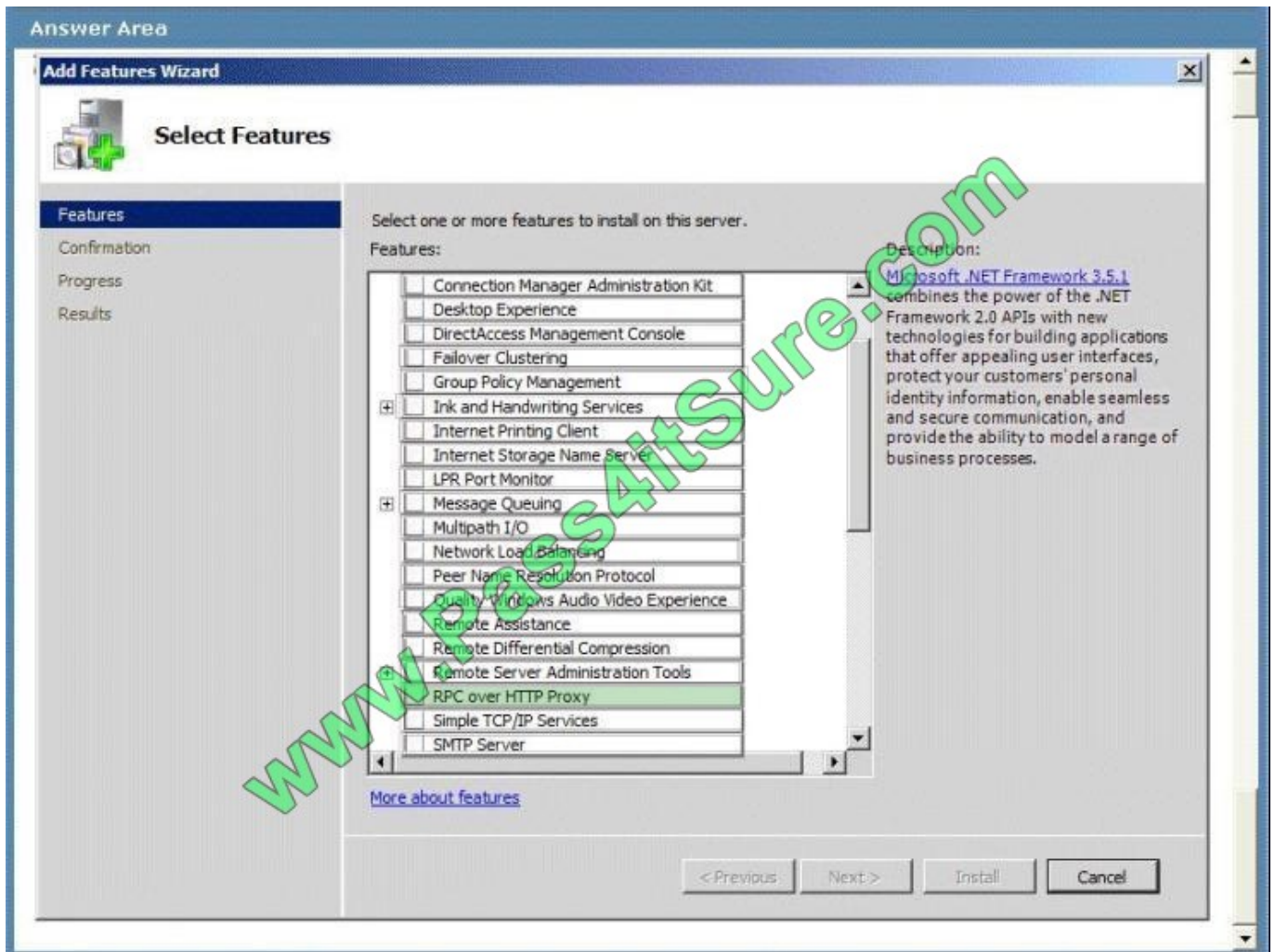
- Connection Manager Administration Kit
- Desktop Experience
- DirectAccess Management Console
- Failover Clustering
- Group Policy Management
- Ink and Handwriting Services
- Internet Printing Client
- Internet Storage Name Server
- LPR Port Monitor
- Message Queuing
- Multipath I/O
- Network Load Balancing
- Peer Name Resolution Protocol
- Quality Windows Audio Video Experience
- Remote Assistance
- Remote Differential Compression
- Remote Server Administration Tools
- RPC over HTTP Proxy
- Simple TCP/IP Services
- SMTP Server

The description for 'Microsoft .NET Framework 3.5.1' is displayed on the right:

Description:
[Microsoft .NET Framework 3.5.1](#) combines the power of the .NET Framework 2.0 APIs with new technologies for building applications that offer appealing user interfaces, protect your customers' personal identity information, enable seamless and secure communication, and provide the ability to model a range of business processes.

At the bottom of the wizard, there are buttons for '< Previous', 'Next >', 'Install', and 'Cancel'.

Correct Answer:



QUESTION 2

You have an Exchange 2010 organization. The organization contains a distribution group named Group1. You need to ensure that a user named User1 can add and remove members from Group1. You must prevent User1 from modifying all other groups. What should you do first?

- A. Add User1 to Group1's Managed by list.
- B. Assign User1 as a group moderator for Group1.
- C. Assign the Distributions Groups management role to User1.
- D. Assign the MyDistributionGroups management role to User1.

Correct Answer: A



QUESTION 3

You have an Exchange Server 2010 Service Pack1 organization. The organization contains a Hub Transport server named Server1 and an Edge Transport sever named Server2. All servers are configured to use an internal DNS server named DNS1 for host resolution. You configure an Edge Subscription from Server1 to Server2.

You need to modify the delayed acknowledgment (ACK) setting of Server2.

What should you do?

- A. From the Exchange Management Console (EMC), modify the properties of the accepted domain.
- B. From the Exchange Management Console (EMC), create a transport rule.
- C. From the Exchange Management Shell, run the Set-TransportServer cmdlet.
- D. From the Exchange Management Shell, run the Set-ReceiveConnector cmdlet.
- E. From the Exchange Management Console (EMC), disable the IP Block List feature.
- F. From the Exchange Management Shell, run the Set-TransportAgent cmdlet.
- G. From the Exchange Management Shell, run the Set-TransportConfig cmdlet.
- H. From the Exchange Management Console (EMC), modify the properties of the remote domain.

Correct Answer: D

Reference: <http://technet.microsoft.com/en-us/library/hh529935.aspx>

**QUESTION 4**

Some users report they cannot receive messages from some external senders. You suspect that there is some anti-spam activity blocking those messages. You need to identify what is blocking the messages.

You will activate and review the logs of one of the following:

- A. Protocol logging
- B. Connectivity logs
- C. Message tracking
- D. Pipeline tracing

Correct Answer: C

QUESTION 5

You are the Enterprise Administrator of an Exchange Server 2010 SP1 organization. Your server is responding to SMTP requests with the address cas1.contoso.com when it should be mail.contoso.com.

What should you use to correct this?

- A. Set-TransportServer.
- B. EMC Hub Transport rule.
- C. EMC Hub Transport Properties.
- D. Set-TransportConfig.
- E. Set-TransportAgent.
- F. Set-ReceiveConnector.

Correct Answer: F

This should be: Set-ReceiveConnector -Identity -FQDN mail.fabrikam.com It's unlikely, but it could also be to do with the banner, so: Set-ReceiveConnector "From the Internet" -Banner "220 Contoso Corporation"

Reference:

<http://social.technet.microsoft.com/Forums/en-US/exchange2010hosters/thread/86d80ab2-c45a-4d93-b641-d623cde53e81>

Banner Reference:

<http://technet.microsoft.com/en-us/library/bb124740.aspx>



To Read the [Whole Q&As](#), please purchase the [Complete Version](#) from [Our website](#).

Try our product !

100% Guaranteed Success

100% Money Back Guarantee

365 Days Free Update

Instant Download After Purchase

24x7 Customer Support

Average 99.9% Success Rate

More than 800,000 Satisfied Customers Worldwide

Multi-Platform capabilities - [Windows](#), [Mac](#), [Android](#), [iPhone](#), [iPod](#), [iPad](#), [Kindle](#)

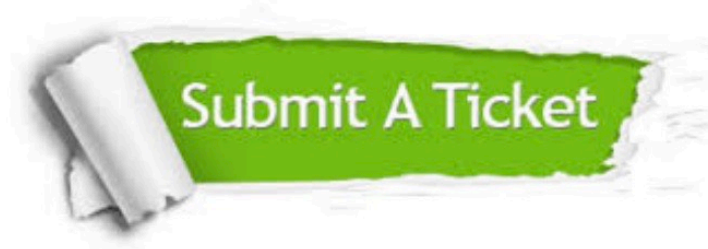
We provide exam PDF and VCE of Cisco, Microsoft, IBM, CompTIA, Oracle and other IT Certifications. You can view Vendor list of All Certification Exams offered:

<https://www.pass4itsure.com/allproducts>

Need Help

Please provide as much detail as possible so we can best assist you.

To update a previously submitted ticket:



 <p>One Year Free Update Free update is available within One Year after your purchase. After One Year, you will get 50% discounts for updating. And we are proud to boast a 24/7 efficient Customer Support system via Email.</p>	 <p>Money Back Guarantee To ensure that you are spending on quality products, we provide 100% money back guarantee for 30 days from the date of purchase.</p>	 <p>Security & Privacy We respect customer privacy. We use McAfee's security service to provide you with utmost security for your personal information & peace of mind.</p>
---	---	--

Any charges made through this site will appear as Global Simulators Limited.

All trademarks are the property of their respective owners.

Copyright © pass4itsure, All Rights Reserved.