



70-646^{Q&As}

Pro: Windows Server 2008

Pass Microsoft 70-646 Exam with 100% Guarantee

Free Download Real Questions & Answers **PDF** and **VCE** file from:

<https://www.pass4itsure.com/70-646.html>

100% Passing Guarantee
100% Money Back Assurance

Following Questions and Answers are all new published by Microsoft
Official Exam Center

-  **Instant Download** After Purchase
-  **100% Money Back** Guarantee
-  **365 Days** Free Update
-  **800,000+** Satisfied Customers



**QUESTION 1**

You need to recommend a solution for managing the address information of the user accounts.

The solution must meet the company's security requirements.

What should you include in the recommendation?

- A. Active Directory delegation
- B. Authorization Manager
- C. built-in security groups
- D. user rights assignments

Correct Answer: A

Delegation of control means you can give fine grained rights to specific tasks to specific users or groups within AD. So a single user or group can be delegated permissions to create new user accounts within a specific OU or Site within your AD forest or domain Topic 6, City Power and Light Scenario: COMPANY OVERVIEW Overview City Power and Light is an international utilities company. The company has a sales department, a finance department, and a production department. Physical Location The company has a main office and a branch office.

EXISTING ENVIRONMENT Network Infrastructure The network contains the following servers:

-

A server named Server1 that runs Windows Server 2008 R2 Enterprise and has the Hyper-V role installed. Server1 hosts three virtual machines (VMs) that run Windows Server 2008 R2 Enterprise. The VMs always run.

-

A Windows Server Update Services (WSUS) server in the main office. The WSUS server manages updates for the client computers in the main office only.

-Several file servers that store data on an iSCSI Storage Area Network (SAN). The file servers have multiple network cards.

-An enterprise root certification authority (CA) named CA1 that runs Windows Server 2008 R2.

The branch office connects to the main office by using a WAN link. The WAN link is highly saturated. All client computers on the network connect to the Internet by using a single Internet connection at the main office.

Problem Statements

All client computers run Microsoft Office 2003. The client computers for the users in the sales department run a 64-bit version of Windows 7. Sales users must be able to run a 64-bit version of Office 2010 and Office 2003 concurrently when

they work offline. Office 2010 must be deployed by using the minimum amount of administrative effort.

REQUIREMENTS**Business Goal**



City Power and Light has the following business goals:

- Software and hardware costs must be minimized, whenever possible.

- Due to power restrictions at the data center in the main office, all new servers must be deployed on VMs, whenever possible.

Planned Changes

City Power and Light plans to implement the following changes in their network:

-

- A WSUS server in the branch office.

-

- A robotic-based tape library for the file servers.

-

- A document management system that supports the following requirements:
 - o Retains multiple versions of a document

- o Automatically Applies access policies to documents

- A solution for managing Group Policy objects (GPOs) that supports the following:
 - o Version tracking

- o Offline modification

- o Role-based access control

- Nine VMs that run Windows Server 2008 R2 Enterprise. Only five VMs will run concurrently.

-

- Two Microsoft SQL Server 2008 Enterprise servers in a failover cluster. The cluster will be attached to a hardware RAID-5 array that has five 2-terabyte drives.

-

- Five additional physical servers for the finance department. The new servers will use native-boot virtual hard disks (VHDs). The VHD images will contain a single partition.

Technical Requirements

City Power and Light must meet the following technical requirements:

-

- The file servers must maintain their connection to the SAN if a network card fails.

-

- The bandwidth utilization between the main office and the branch office must be minimized.

- Administrators in the main office must approve or reject updates for all of the client computers in all of the offices.



Security Requirements

City Power and Light must meet the following security requirements:

-

All help desk technicians must be able to approve certificate requests and revoke certificates. The help desk technicians must be prevented from modifying the properties of the CA.

-

All telecommunications technicians must be able to manage the virtual networks of Server1. The telecommunications technicians must be prevented from performing all other Hyper-V management task.

All of the documents created by users in the finance department must be shared with all of the managers in the company. After 30 days, only those who created the documents must be able to access the documents.

QUESTION 2

You need to recommend a VPN solution for the new sales office. The solution must support the company's planned changes. What should you include in the recommendation?

- A. Internet Key Exchange version 2 (IKEv2)
- B. Layer 2 Tunneling Protocol (L2TP)
- C. PointtoPoint Tunneling Protocol (PPTP)
- D. Secure Socket Tunneling Protocol (SSTP)

Correct Answer: D

<http://support.microsoft.com/kb/947032>

SSTP is a new kind of Virtual Private Networking (VPN) tunnel that is available in the Routing and Remote Access Server role in Windows Server 2008. SSTP allows for Point-to-Point Protocol (PPP) packets to be encapsulated over HTTP.

This allows for a VPN connection to be more easily established through a firewall or through a Network Address Translation (NAT) device. Also, this allows for a VPN connection to be established through an HTTP proxy device.

The information in this article is more likely to apply to a small-sized or medium-sized organization.

For these kinds of organizations, it is common to have one public IP address that is assigned to the external interface of a NAT router or of a gateway device. This article describes the following scenario:

You have a Windows Server 2008-based Secure Socket Tunneling Protocol (SSTP)-based VPN server.

The server is assigned a private IP address.

The server is located on an internal network behind a NAT device.

QUESTION 3



You need to recommend a solution for storing user documents. What should you include in the recommendation?

- A. folder redirection
- B. home folders
- C. mandatory user profiles
- D. roaming user profiles

Correct Answer: A

<http://technet.microsoft.com/en-us/library/cc732275.aspx>

Folder Redirection User settings and user files are typically stored in the local user profile, under the Users folder. The files in local user profiles can be accessed only from the current computer, which makes it difficult for users who use more than one computer to work with their data and synchronize settings between multiple computers. Two technologies exist to address this problem:

Roaming Profiles and Folder Redirection. Both technologies have their advantages, and they can be used separately or together to create a seamless user experience from one computer to another. They also provide additional options for administrators managing user data.

QUESTION 4

A company has its main office in New York and branch offices in Miami and Quebec. All sites are connected by reliable WAN links.

You are designing a Windows Server Update Services (WSUS) deployment strategy. The deployment strategy must meet the following requirements:

Download updates from Windows Update only in the New York office.

Ensure that the update language can be specified for the Quebec office.

You need to design a deployment strategy that meets the requirements.

How should you configure the servers and hierarchy types?

To answer, drag the appropriate server types and hierarchy types from the list to the correct location or locations in the answer area.

Select and Place:



Modes	Answer Area				
<table border="1"> <tr> <td>Asynchronous Mode</td> <td>Autonomous Mode</td> </tr> <tr> <td>Replica Mode</td> <td>Synchronous Mode</td> </tr> </table>	Asynchronous Mode	Autonomous Mode	Replica Mode	Synchronous Mode	
Asynchronous Mode	Autonomous Mode				
Replica Mode	Synchronous Mode				
<table border="1"> <tr> <td>Downstream WSUS Server</td> <td>Upstream WSUS Server</td> </tr> </table>	Downstream WSUS Server	Upstream WSUS Server			
Downstream WSUS Server	Upstream WSUS Server				

Correct Answer:

Modes	Answer Area				
<table border="1"> <tr> <td>Asynchronous Mode</td> <td>Autonomous Mode</td> </tr> <tr> <td>Replica Mode</td> <td>Synchronous Mode</td> </tr> </table>	Asynchronous Mode	Autonomous Mode	Replica Mode	Synchronous Mode	
Asynchronous Mode	Autonomous Mode				
Replica Mode	Synchronous Mode				
<table border="1"> <tr> <td>Downstream WSUS Server</td> <td>Upstream WSUS Server</td> </tr> </table>	Downstream WSUS Server	Upstream WSUS Server			
Downstream WSUS Server	Upstream WSUS Server				

The most basic WSUS deployment consists of a server inside the corporate firewall that serves client computers on a private intranet, as shown in the "Simple WSUS Deployment" illustration below. The WSUS server connects to Microsoft

Update to download updates. This is known as synchronization. During synchronization, WSUS determines if any new updates have been made available since the last time you synchronized. If it is your first time synchronizing WSUS, all updates are made available for download.

WSUS server hierarchies.

You can create complex hierarchies of WSUS servers. Since you can synchronize one WSUS server with another WSUS server instead of with Microsoft Update, you need to have only a single WSUS server that is connected to Microsoft

Update. When you link WSUS servers together, there is an upstream WSUS server and a downstream WSUS server, as shown in the "WSUS Server Hierarchy" illustration below.

There are two ways to link WSUS servers together:



Autonomous mode: An upstream WSUS server shares updates with its downstream server or servers during synchronization, but not update approval status or computer group information. Downstream WSUS servers must be administered

separately. Autonomous servers can also synchronize updates for a set of languages that is a subset of the set synchronized by their upstream server.

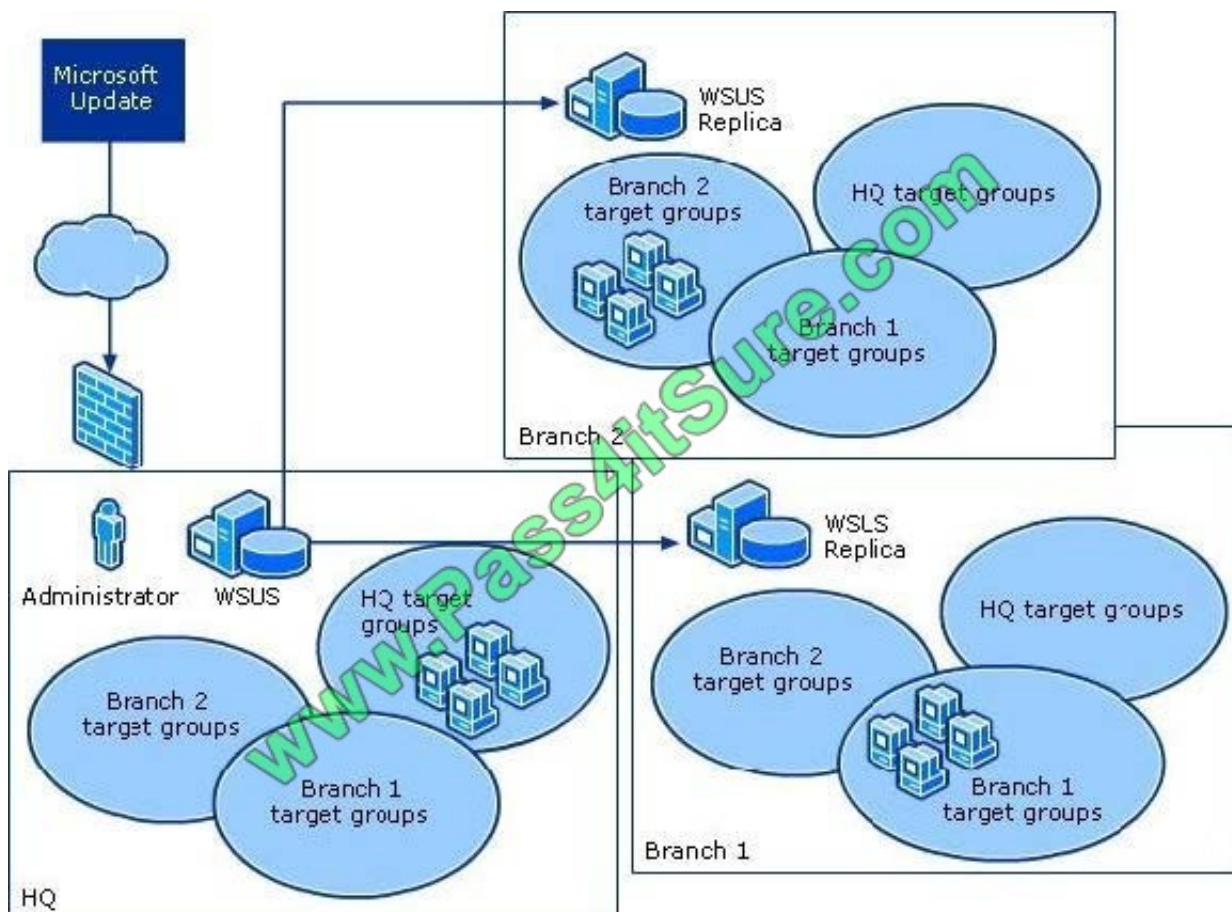
Replica mode: An upstream WSUS server shares updates, approval status, and computer groups with its downstream server or servers. Downstream replica servers inherit update approvals and cannot be administered apart from their upstream WSUS server.

Centralized management

Centrally managed WSUS servers utilize replica servers. Replica servers are not administered separately, and are used only to distribute approvals, groups, and updates. The approvals and targeting groups you create on the master server

are replicated throughout the entire organization, as shown in the "WSUS Centralized Management (Replica Servers)" illustration below. Remember that computer group membership is not distributed throughout the replica group, only the

computer groups themselves. In other words, you always have to load client computers into computer groups.



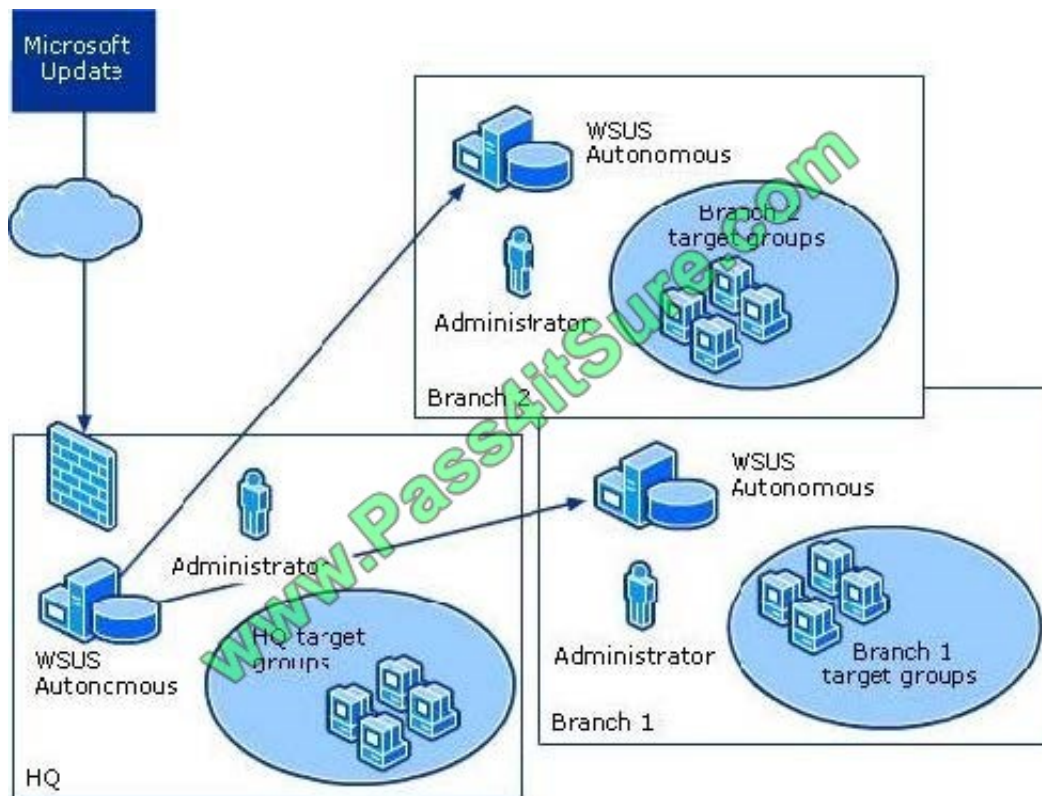
It is possible that not all the sites in your organization require the same computer groups. The important thing is to create enough computer groups on the administered server to satisfy the needs of the rest of the organization. Computers at different sites can be moved into a group appropriate for the site. Meanwhile, computer groups inappropriate for a particular site simply remain empty. All update approvals, like computer groups, must be created on the master server.



For step-by-step instructions, see Create Replica Servers later in this guide. You should also make sure that the upstream server is configured for all the languages required by its replica servers. If you add languages to the upstream server, you should copy the new updates to its replica servers.

Changing language options on the upstream server alone might result in a mismatch between the number of updates that are approved on the central server and the number of updates approved on the replica servers.

Distributed management Distributed management offers you full control over approvals and computer groups for the WSUS server, as shown in the "WSUS Distributed Management" illustration below. With the distributed management model, there is usually an administrator at each site who decides which update languages are needed, creates computer groups, assigns computers to groups, tests and approves updates, and ensures that the correct updates are installed on the right computer groups. Distributed management is the default installation option for all WSUS installations.



QUESTION 5

You need to recommend a solution for deploying App2. What should you recommend?

- A. Deploy a new AppV package that contains App2. Stream the package to the client computers of the 10 users.
- B. Deploy a new MEDV workspace that contains App2. Deploy the workspace to the client computers of the 10 users.
- C. On an RD Session Host server in the branch office, install and publish App2 by using RemoteApp. Deploy the RemoteApp program as an MSI file.
- D. On an RD Virtualization Host server in the branch office, create 10 Windows 7 VMs that contain App2. Configure the new VMs as personal virtual desktops.

Correct Answer: D



VCE & PDF

Pass4itSure.com

<https://www.pass4itsure.com/70-646.html>

2022 Latest pass4itsure 70-646 PDF and VCE dumps Download

[70-646 VCE Dumps](#)

[70-646 Study Guide](#)

[70-646 Braindumps](#)



To Read the [Whole Q&As](#), please purchase the [Complete Version](#) from [Our website](#).

Try our product !

100% Guaranteed Success

100% Money Back Guarantee

365 Days Free Update

Instant Download After Purchase

24x7 Customer Support

Average 99.9% Success Rate

More than 800,000 Satisfied Customers Worldwide

Multi-Platform capabilities - [Windows](#), [Mac](#), [Android](#), [iPhone](#), [iPod](#), [iPad](#), [Kindle](#)

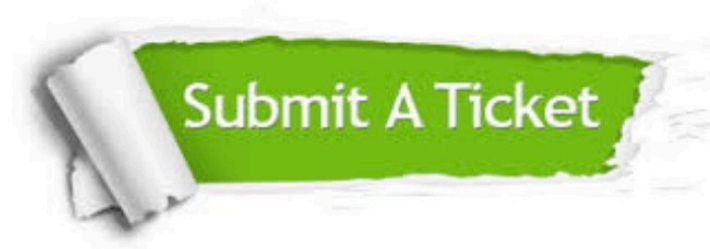
We provide exam PDF and VCE of Cisco, Microsoft, IBM, CompTIA, Oracle and other IT Certifications. You can view Vendor list of All Certification Exams offered:

<https://www.pass4itsure.com/allproducts>

Need Help

Please provide as much detail as possible so we can best assist you.

To update a previously submitted ticket:



 <p>One Year Free Update Free update is available within One Year after your purchase. After One Year, you will get 50% discounts for updating. And we are proud to boast a 24/7 efficient Customer Support system via Email.</p>	 <p>Money Back Guarantee To ensure that you are spending on quality products, we provide 100% money back guarantee for 30 days from the date of purchase.</p>	 <p>Security & Privacy We respect customer privacy. We use McAfee's security service to provide you with utmost security for your personal information & peace of mind.</p>
---	---	--

Any charges made through this site will appear as Global Simulators Limited.

All trademarks are the property of their respective owners.

Copyright © pass4itsure, All Rights Reserved.