



70-643^{Q&As}

Windows Server 2008 Applications Infrastructure, Configuring

Pass Microsoft 70-643 Exam with 100% Guarantee

Free Download Real Questions & Answers **PDF** and **VCE** file from:

<https://www.pass4itsure.com/70-643.html>

100% Passing Guarantee
100% Money Back Assurance

Following Questions and Answers are all new published by Microsoft
Official Exam Center

-  **Instant Download** After Purchase
-  **100% Money Back** Guarantee
-  **365 Days** Free Update
-  **800,000+** Satisfied Customers





QUESTION 1

You have a Terminal Server that runs Windows Server 2008. You need to configure the server to end any sessions that are inactive for more than one hour. What should you do?

- A. From Terminal Services Manager, create a new group.
- B. From Terminal Services Manager, delete the inactive sessions.
- C. From Terminal Services Configuration, modify the RDP-Tcp settings.
- D. From Terminal Services Configuration, modify the User logon mode setting.

Correct Answer: C

To configure the Terminal Server to end any sessions that are inactive for more than one hour, you need to modify the RDP-Tcp settings from Terminal Services Configuration. You can configure the properties of the terminal server's RDP-TCP connection to provide better protection. You can set session time limits that help to ensure that sessions are not left unattended and active for long periods Reference: How Secure are Windows Terminal Services? / Securing the RDP-TCP Connection http://www.windowsecurity.com/articles/Windows_Terminal_Services.html

QUESTION 2

Your network contains a Network Load Balancing (NLB) cluster named NLB01. NLB01 contains two servers named Server1 and Server2 that run Windows Server 2008 B2. Server1 and Server2 are configured:

Server setting	Server configuration
Initial host state	Started
Retain suspended state after computer starts	Enabled

You need to install Windows updates on Server1 to meet the following requirements:

Prevent new connections to Server1 while the updates are installed. Provide connected users with the ability to complete their session on server1 before the updates are installed.

What should you do?

To answer, move the appropriate actions from the Possible Actions list to the Necessary Actions area and arrange them in the correct order.

Select and Place:



Possible Actions

- Install patches on Server1.
- Wait until all of the user connections to Server1 are closed.
- From Network Load Balancing Manager, right-click **Server1** and click **Stop**.
- From Network Load Balancing Manager, right-click **Server1** and click **Suspend**.
- From Network Load Balancing Manager, right-click **Server1** and click **Drainstop**.

Necessary Actions

Reset Instructions

Correct Answer:

Possible Actions

- From Network Load Balancing Manager, right-click **Server1** and click **Stop**.
- From Network Load Balancing Manager, right-click **Server1** and click **Suspend**.

Necessary Actions

- From Network Load Balancing Manager, right-click **Server1** and click **Drainstop**.
- Wait until all of the user connections to Server1 are closed.
- Install patches on Server1.

Reset Instructions

QUESTION 3

A server runs Windows Server 2008 R2. The Remote Desktop Services server role is installed on the server.

You deploy a new application on the server. The application creates files that have an extension of .xyz.

You need to ensure that users can launch the remote application from their computers by double-clicking a file that has the .xyz extension.

What should you do?

- A. Configure the Remote Desktop Connection Client on the users' computers to point to the server.
- B. Configure the application as a published application by using a Remote Desktop Program file.
- C. Configure the application as a published application by using a Microsoft Windows Installer package file.
- D. Configure the application as a published application by using a Remote Desktop Web Access Web site.

Correct Answer: C



Launching Apps from the Desktop

For users who want to double-click documents to launch the application, terminal services now provides the ability to "install" the remote application's link to the desktop. This process effectively wraps the Remote-App's RDP file into a Windows Installer package--an MSI file--that is later installed to desktops in the environment.

At the same time, the installed MSI can modify the file extension associations on the desktop to reroute a double-clicked file to its associated RemoteApp on the terminal server. Figure 3 shows how the file extension associations have been modified on a client system after a Word RemoteApp is installed. Now, double-clicking any of the common Word file extensions will launch Word via the Remote Desktop Connection.

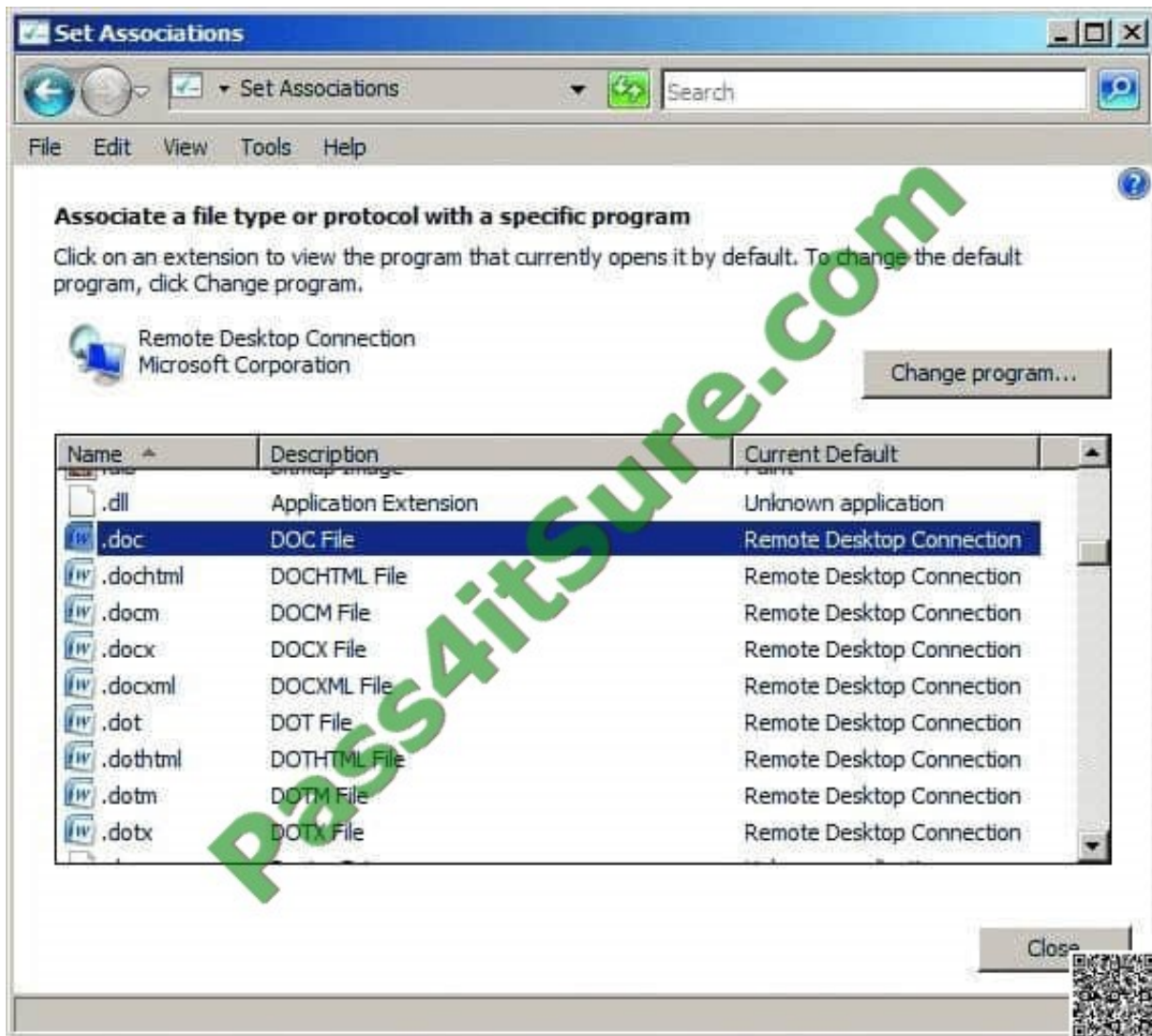


Figure 3 File extension associations that have been altered to launch the Remote Desktop Connection To create a Windows Installer package out of an existing RemoteApp, first navigate to the TS RemoteApp Manager. Right-click the RemoteApp of interest and select Create Windows Installer Package. By default, all created Windows Installer packages are stored in the location C:\Program Files\Packaged Programs, but this location can be changed from within the RemoteApp Wizard. Also configurable within the wizard are the name and port for the server that will host the RemoteApp, as well as server authentication, certificate settings, and TS Gateway settings.

Settings that relate to the application's location after installation to a candidate desktop are shown in Figure 4.

As you can see, it is possible to create a shortcut on the desktop as well as to a location within the Start menu folder. The most important checkbox on this screen is at the very bottom. It's the checkbox for Take over client settings, and it



re-associates any file extension associations for the RemoteApp from the local desktop to the terminal server. This checkbox must be selected if you want users to be able to double-click documents to launch their TS-hosted application. Click Next and Finish to complete the wizard.

Please Note: -Since Windows2008R2 Terminal Services (TS) is now rebranded to Remote Desktop Services (RDS)

Source: <http://technet.microsoft.com/en-us/query/dd314392>

QUESTION 4

Your network contains two Hyper-V hosts named Server1 and Server2.


Server1 and Server2 belong to a failover cluster. Server1 and Server2 are connected to the same 2- terabyte logical unit number (LUN).

The cluster will host 20 highly available virtual machines (VMs).

You need to ensure that the VMs can fail over independently. Which action should you select from Failover Cluster Manager?

To answer, select the appropriate action in the answer area.

Point and Shoot:

Ordered List Title	Answer Choices Title
	<p>From Disk Management, create a VHD.</p> <p>Run bcdboot.exe.exe and specify a path.</p> <p>Run imageX.exe and specify the /apply parameter.</p> <p>Run dism.exe and specify the /get-wiminfo parameter</p> <p>From the computer BIOS, modify the boot order.</p>

Correct Answer:



Ordered List Title	Answer Choices Title
<p>From Disk Management, create a VHD.</p> <p>Run imageX.exe and specify the /apply parameter.</p> <p>Run bcdboot.exe.exe and specify a path.</p>	<p>Run dism.exe and specify the /get-wiminfo parameter</p> <p>From the computer BIOS, modify the boot order.</p>

QUESTION 5

You deploy a server that has Microsoft SharePoint Foundation 2010 installed. Users report that they cannot configure the Alert Me option for SharePoint documents.

You need to ensure that users can create alerts.

What should you modify from Central Administration?

- A. Configure Send To Connections
- B. Information Rights Management
- C. the Outgoing Email Settings
- D. the Workflow Settings

Correct Answer: C

Configure alert settings for a Web application To help users keep track of changes that are made to a Web site, Microsoft SharePoint Foundation 2010 includes the alerts feature, which is an email notification service. Users can configure

which alerts they want to receive or send to communicate and track changes to items on a Web site. Users can create alerts on the following items in a site:

Lists Users are notified of changes to the list, such as when an item is added, deleted, or changed in a list.

List items Users are notified of changes to a particular item in a list. Document libraries Users are notified of changes to the document library, such as when a document is added, deleted, or changed in a document library or when Web

discussions are added, changed, deleted, closed, or started for a document.

Documents



Users are notified of changes in a particular document such as when a document is changed, added, deleted, or closed.

You can use Central Administration to configure alerts. You can turn on or turn off alerts, and you can specify how many alerts users can create.

Before alerts can work for any Web site, outgoing email must be enabled for the server. To configure alert settings for a Web application by using Central Administration

1.
Verify that the user account that is performing this task is a member of the Farm Administrators SharePoint group.

2.
On the SharePoint Central Administration Web site, click Application Management.

3.
On the Application Management page, click Manage Web Applications.

4.
Click the Web application for which you want to configure alerts. The ribbon becomes active.

5.
On the ribbon, click the General Settings drop-down menu, and then click General Settings.

6.
On the Web Application General Settings page, in the Alerts section, configure the following settings:

Specify whether alerts are On or Off. By default, alerts are On. Specify the Maximum number of alerts that a user can create in a SharePoint Web site. This value

can be any integer from 1 through 2,000,000,000, or you can specify that the number of alerts is unlimited. The default value is 500 alerts.

7.
After you have finished configuring alerts, click OK. Source: <http://technet.microsoft.com/en-us/library/cc287751.aspx>

[70-643 VCE Dumps](#)

[70-643 Practice Test](#)

[70-643 Exam Questions](#)



To Read the [Whole Q&As](#), please purchase the [Complete Version](#) from [Our website](#).

Try our product !

100% Guaranteed Success

100% Money Back Guarantee

365 Days Free Update

Instant Download After Purchase

24x7 Customer Support

Average 99.9% Success Rate

More than 800,000 Satisfied Customers Worldwide

Multi-Platform capabilities - [Windows](#), [Mac](#), [Android](#), [iPhone](#), [iPod](#), [iPad](#), [Kindle](#)

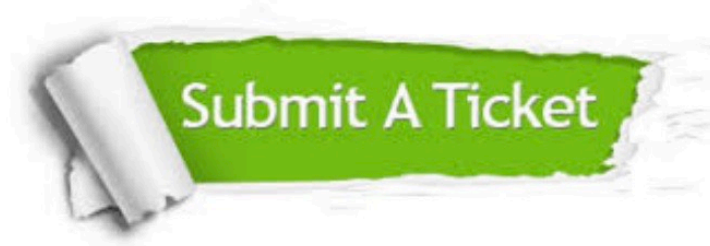
We provide exam PDF and VCE of Cisco, Microsoft, IBM, CompTIA, Oracle and other IT Certifications. You can view Vendor list of All Certification Exams offered:

<https://www.pass4itsure.com/allproducts>

Need Help

Please provide as much detail as possible so we can best assist you.

To update a previously submitted ticket:



 <p>One Year Free Update Free update is available within One Year after your purchase. After One Year, you will get 50% discounts for updating. And we are proud to boast a 24/7 efficient Customer Support system via Email.</p>	 <p>Money Back Guarantee To ensure that you are spending on quality products, we provide 100% money back guarantee for 30 days from the date of purchase.</p>	 <p>Security & Privacy We respect customer privacy. We use McAfee's security service to provide you with utmost security for your personal information & peace of mind.</p>
---	---	--

Any charges made through this site will appear as Global Simulators Limited.

All trademarks are the property of their respective owners.

Copyright © pass4itsure, All Rights Reserved.