



70-643^{Q&As}

Windows Server 2008 Applications Infrastructure, Configuring

Pass Microsoft 70-643 Exam with 100% Guarantee

Free Download Real Questions & Answers **PDF** and **VCE** file from:

<https://www.pass4itsure.com/70-643.html>

100% Passing Guarantee
100% Money Back Assurance

Following Questions and Answers are all new published by Microsoft
Official Exam Center

-  **Instant Download** After Purchase
-  **100% Money Back** Guarantee
-  **365 Days** Free Update
-  **800,000+** Satisfied Customers



**QUESTION 1**

Your network contains four servers that run Windows Server 2008 R2. The servers are configured as shown in the following table.

Server name	Role services
Server1	Remote Desktop Web Access (RD Web Access)
Server2	Remote Desktop Session Host (RD Session Host)
Server3	Remote Desktop Session Host (RD Session Host)
Server4	Remote Desktop Connection Broker (RD Connection Broker)

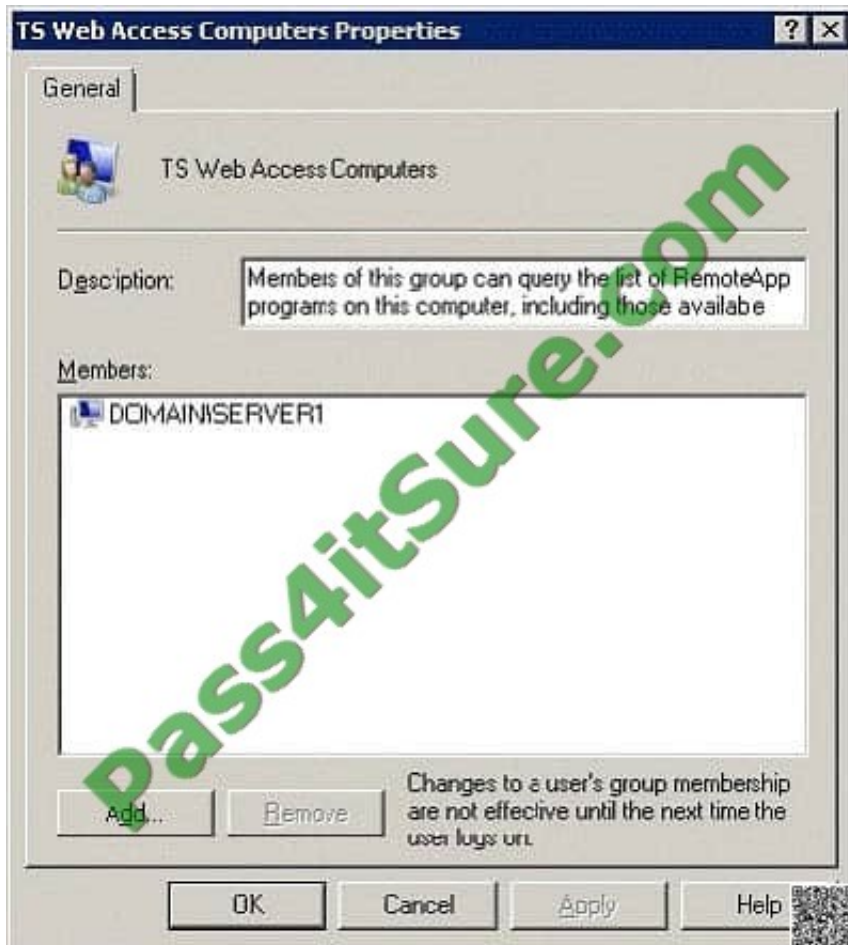


Server4 Remote Desktop Connection Broker (RD Connection Broker) Server2 and Server3 are configured as RemoteApp sources on Server4. You need to ensure that the RemoteApp programs are listed on the RD Web Access Web page on Server1.

What should you do?

- A. On Server4, add Server1 to the Session Broker Computers group.
- B. On Server4, add Server1 to the TS Web Access Computers group.
- C. On Server1, add Server4 to the TS Web Access Administrators group.
- D. On Server1, add Server2 and Server3 to the TS Web Access Administrators group.

Correct Answer: B



Populate the TS Web Access Computers Security Group If the RD Web Access server and the Remote Desktop Session Host (RD Session Host) server that hosts the RemoteApp programs are separate servers, you must add the computer account of the RD Web Access server to the TS Web Access Computers security group on the RD Session Host server. To add the computer account of the RD Web Access server to the security group On the RD Session Host server, click Start, point to Administrative Tools, and then click Computer Management.

In the left pane, expand Local Users and Groups, and then click Groups. In the right pane, double-click TS Web Access Computers. In the TS Web Access Computers Properties dialog box, click Add. In the Select Users, Computers, or Groups dialog box, click Object Types. In the Object Types dialog box, select the Computers check box, and then click OK. In the Enter the object names to select box, specify the computer account of the RD Web Access server, and then click OK.

Click OK to close the TS Web Access Computers Properties dialog box.

Source: <http://technet.microsoft.com/en-us/library/cc771623.aspx>

QUESTION 2

You are evaluating whether to purchase Windows Server 2008 R2 Service Pack 1 (SP1).

Several weeks ago, you installed Windows Server 2008 R2 SP1 on a server. During the installation, you did not enter a product key.



You need to identify how many days remain until the license status of the server will change to Unlicensed.

Which tool should you use?

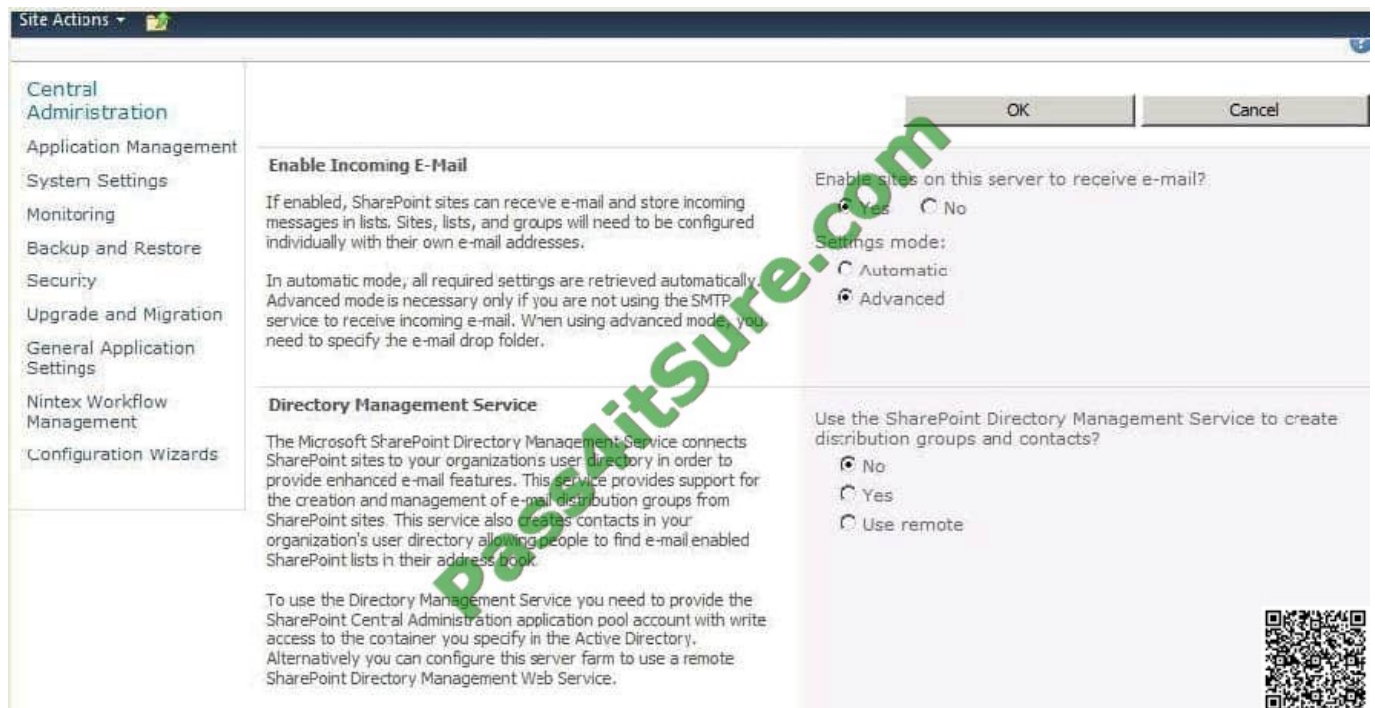
- A. System Configuration
- B. Windows Activation
- C. Action Center
- D. Act.exe

Correct Answer: B

Ref: <http://www.window山谷.com/is-windows-activated-check-windows-activation-status/>

QUESTION 3

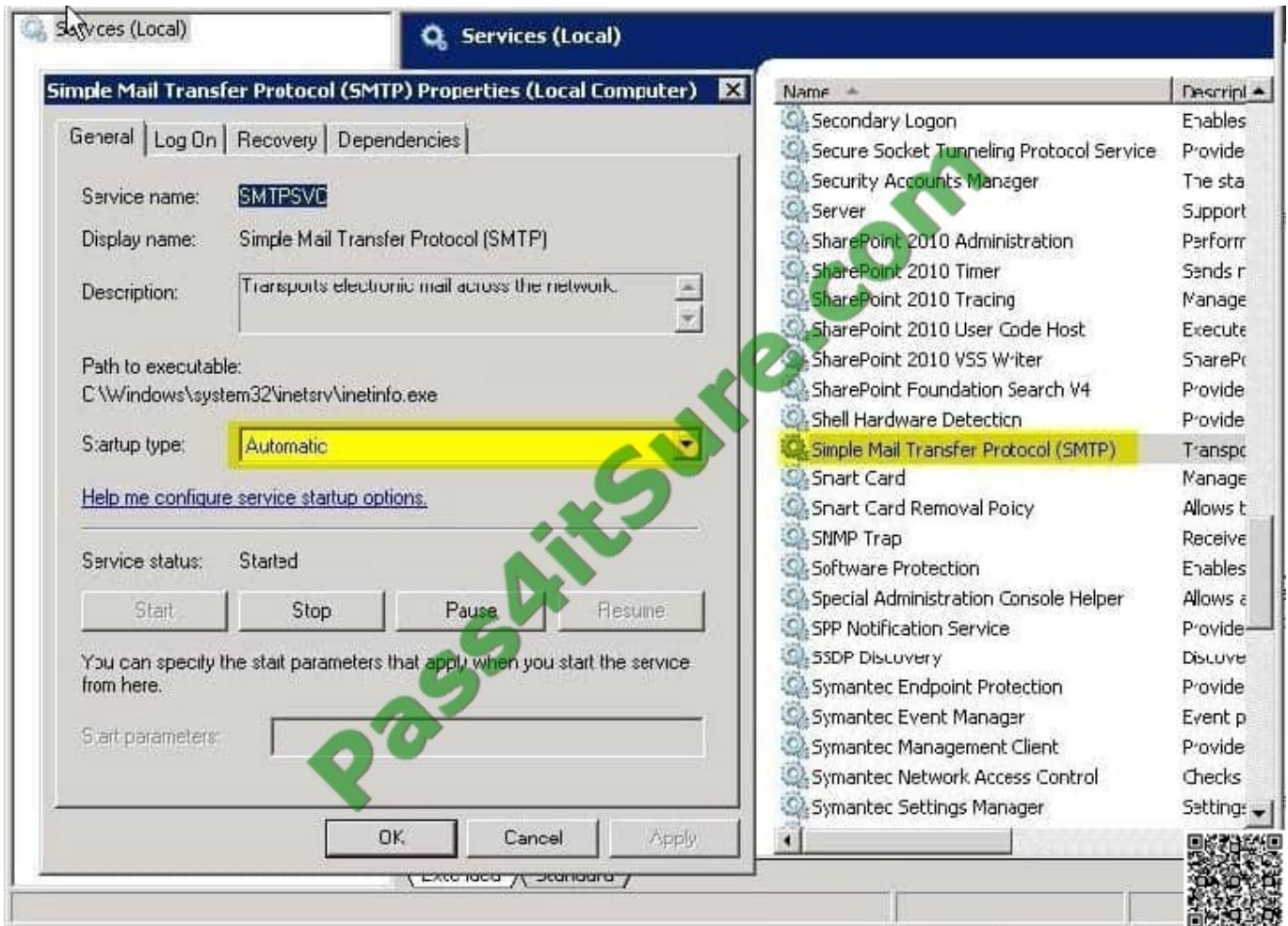
Your network contains a server named Web1 that has Microsoft SharePoint Foundation 2010 installed. You open Configure the incoming email settings as shown in the exhibit. (Click the Exhibit button.)



You need to configure the incoming email settings to use automatic mode. What should you do first?

- A. Configure the outgoing email settings.
- B. Install the SMTP Server feature.
- C. Activate the email Integration with Content Organizer feature.
- D. Install the Message Queuing feature.

Correct Answer: B



QUESTION 4

Your network contains a Network Load Balancing (NLB) cluster named NLB01. NLB01 contains two servers named Node1 and Node2 that run Windows Server 2008 R2. Node1 and Node2 are configured as shown in the following table:

Server setting	Server configuration
Initial host state	Started
Retain suspended state after computer starts	Enabled

You need to install Windows updates on Node1 to meet the following requirements:

Prevent new connections to Node1 while the updates are installed. Provide connected users with the ability to complete their session on Node1 before the updates are installed.

What should you do first?

- A. From Network Load Balancing Manager, right-click Model and click Drainstop.
- B. From Network Load Balancing Manager, right-click Node1 and click Suspend.

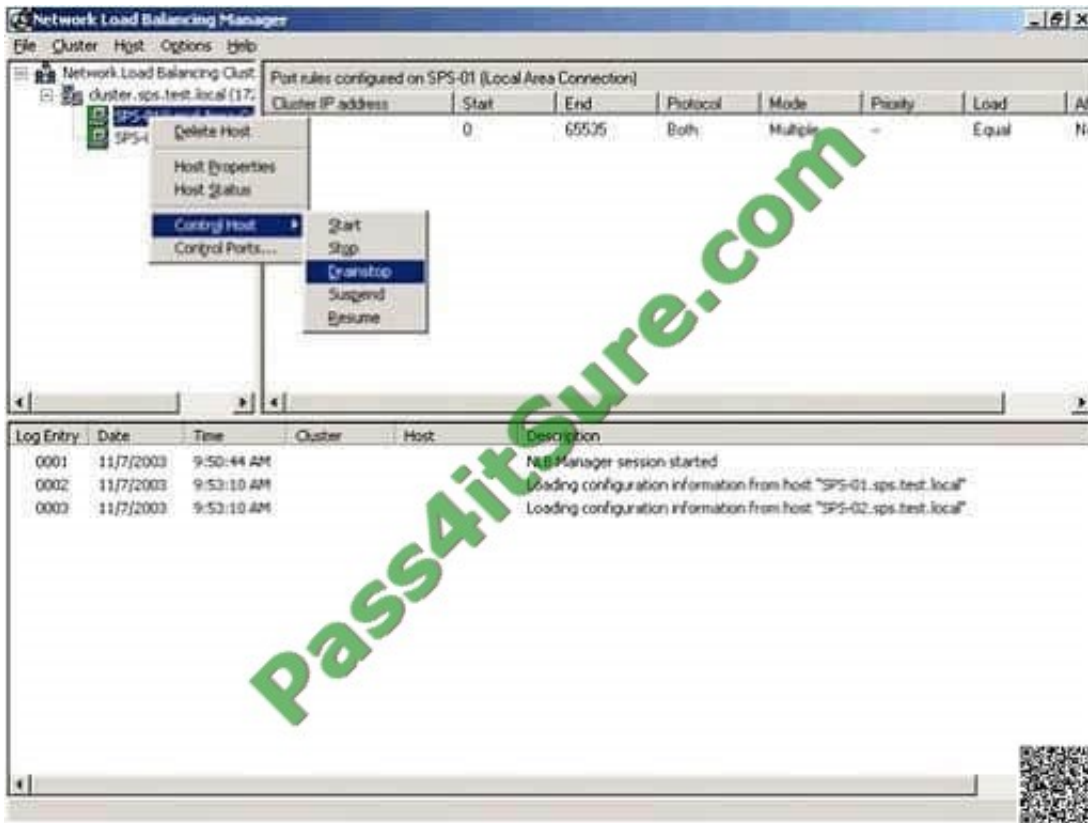


C. From the Services console, right-click Workstation and click Pause.

D. From the Services console, right-click Server and click Pause.

Correct Answer: A

Drainstopping is used to tell the server to continue processing existing requests but not accept any new requests, thus gracefully taking the server down.



<http://office.microsoft.com/download/afile.aspx?AssetID=AM102437081033>

QUESTION 5

You manage a Web server named Server1 that runs windows server 2008 R2. Server1 has the FTP Server role installed.

You need to manage the FTP settings on Server1.

Which tool should you use?

- A. Windows firewall
- B. Services
- C. System Configuration
- D. Component services



- E. Internet Information Services (IIS) Manager
 - F. Telnet
 - G. Performance Monitor
 - H. Internet Information Services (IIS)6.0 Manager
 - I. IISreset
 - J. Ftp
 - K. Local Security Policy
 - L. Security Configuration Wizard (SCW)
- Correct Answer: E

[70-643 PDF Dumps](#)

[70-643 Study Guide](#)

[70-643 Braindumps](#)



To Read the [Whole Q&As](#), please purchase the [Complete Version](#) from [Our website](#).

Try our product !

100% Guaranteed Success

100% Money Back Guarantee

365 Days Free Update

Instant Download After Purchase

24x7 Customer Support

Average 99.9% Success Rate

More than 800,000 Satisfied Customers Worldwide

Multi-Platform capabilities - [Windows](#), [Mac](#), [Android](#), [iPhone](#), [iPod](#), [iPad](#), [Kindle](#)

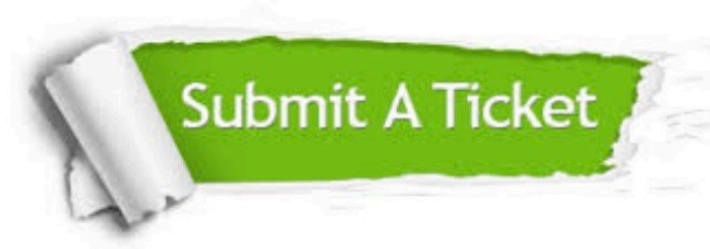
We provide exam PDF and VCE of Cisco, Microsoft, IBM, CompTIA, Oracle and other IT Certifications. You can view Vendor list of All Certification Exams offered:

<https://www.pass4itsure.com/allproducts>

Need Help

Please provide as much detail as possible so we can best assist you.

To update a previously submitted ticket:



 <p>One Year Free Update Free update is available within One Year after your purchase. After One Year, you will get 50% discounts for updating. And we are proud to boast a 24/7 efficient Customer Support system via Email.</p>	 <p>Money Back Guarantee To ensure that you are spending on quality products, we provide 100% money back guarantee for 30 days from the date of purchase.</p>	 <p>Security & Privacy We respect customer privacy. We use McAfee's security service to provide you with utmost security for your personal information & peace of mind.</p>
---	---	--

Any charges made through this site will appear as Global Simulators Limited.

All trademarks are the property of their respective owners.

Copyright © pass4itsure, All Rights Reserved.