



70-643^{Q&As}

Windows Server 2008 Applications Infrastructure, Configuring

Pass Microsoft 70-643 Exam with 100% Guarantee

Free Download Real Questions & Answers **PDF** and **VCE** file from:

<https://www.pass4itsure.com/70-643.html>

100% Passing Guarantee
100% Money Back Assurance

Following Questions and Answers are all new published by Microsoft
Official Exam Center

-  **Instant Download** After Purchase
-  **100% Money Back** Guarantee
-  **365 Days** Free Update
-  **800,000+** Satisfied Customers





QUESTION 1

Your network contains a server named Server1. You add a new hard disk to Server1.

When you run the Provision Storage Wizard, you do not see the new disk. You need to ensure that you can provision the new disk by using the Provision Storage Wizard.

What should you do?

- A. At the command prompt, run `chkdsk.exe /f`.
- B. From Disk Management, initialize the disk.
- C. From Services, restart the Virtual Disk service.
- D. From Storage Explorer, click Refresh SAN View.

Correct Answer: B

QUESTION 2

Your network contains a Web server named Server1.

You install a server certificate on Server1.

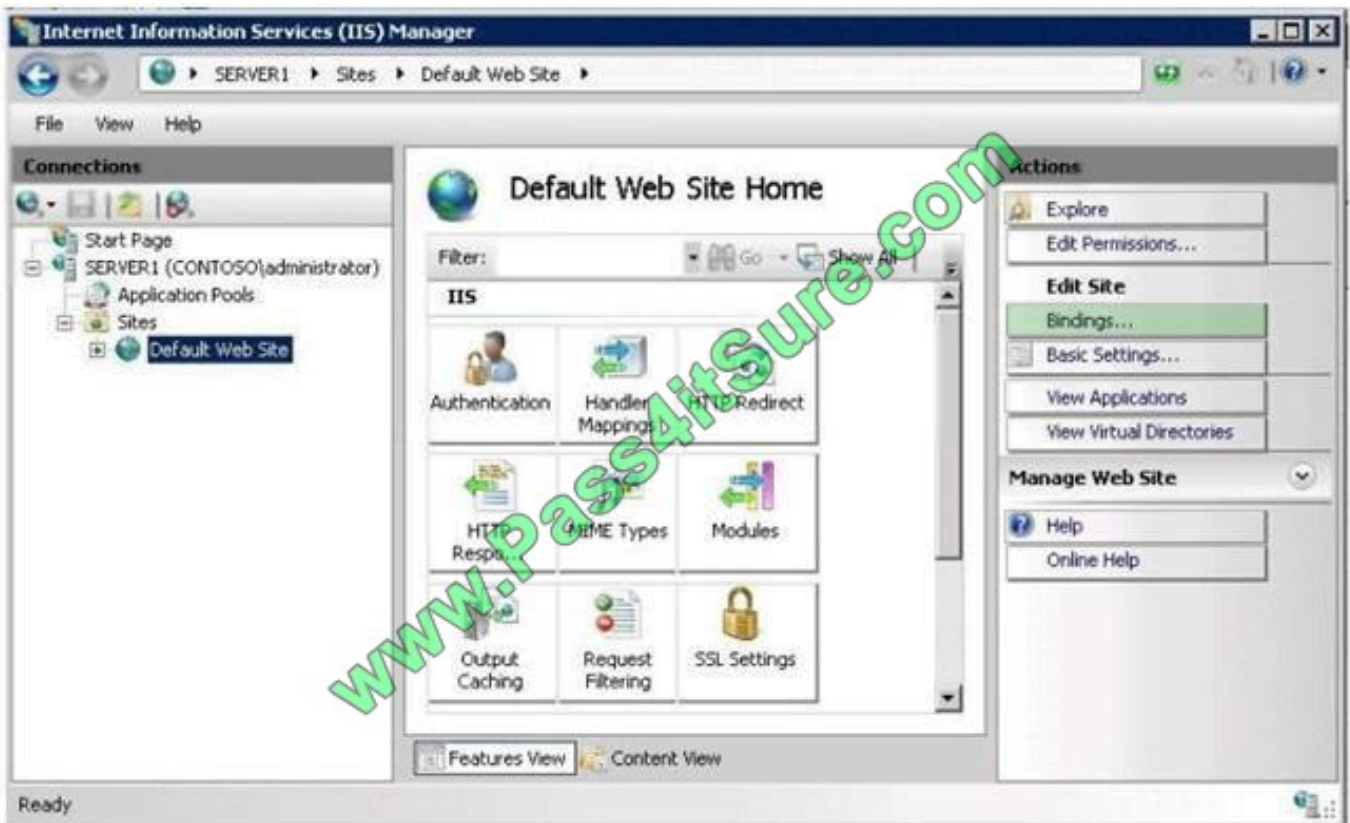
You need to ensure that users can access the default Web site over HTTPS.

What should you configure from Internet Information Services (IIS) Manager? To answer, select the appropriate component or action in the answer area.

Point and Shoot:



Correct Answer:



**QUESTION 3**

Your network uses Multiple Activation Key (MAK) licenses. You perform a Server Core installation of Windows Server 2008 R2.

During the installation, you enter the license key.

You need to activate Windows Server 2008 R2 on the server.

Which command should you run?

- A. slmgr.vbs -ipk
- B. install-callpack
- C. ocsetup.exe was-windowsactivationservice
- D. slmagr.vbs -ato

Correct Answer: D

(If you already entered the product key during Windows Setup, you can skip this first step.) Then, type the following command to perform the actual activation: slmgr ato You can also use Slmgr command to activate a remote installation. For more information, type slmgr at a command prompt.

QUESTION 4

You have a w2k8 IIS server. Your company uses SMTP email. Now you want to prevent the sending of unauthorized email and restrict SMTP only to internal servers without affecting the current mail flow.

What should you do?

- A. Block all outbound email with a windows firewall rule
- B. Disable the high alerts in windows defender
- C. Enable tls-encryption on the outbound security
- D. You add a SMTP relay restriction that allows SMTP-relaying only from the servers in your domain

Correct Answer: D

QUESTION 5

You have 10 servers that run Windows Server 2008 R2. The servers have the Web Server (IIS) server role installed. The servers are members of a Web server farm. The servers host the same Web site.



You need to configure the servers to meet the following requirements:

Allow changes to the Web server configurations that are made on one server to be made on all servers in the farm.

Minimize administrative effort to perform the configuration changes.

What should you do?

- A. On all servers, configure the Shared Configuration settings.
- B. On one server, configure the Shared Configuration setting.
- C. On one server, create a scheduled task that copies the Intepub folder to the other servers.
- D. Create a DFS Namespace. On each server configure the Inetpub folder as the target of the DFS Namespace.

Correct Answer: A

To configure settings to use shared configuration files and encryption keys

1.
Open IIS Manager and click the server node. For information about opening IIS Manager, see Open IIS Manager (IIS 7).
2.
In Features View, double-click Management Service.
3.
On the Management Service page, in the Actions pane, click Stop.
4.
In the toolbar, click the back button.
5.
In Features View, double-click Shared Configuration.
6.
Select Enable shared configuration to enable the Shared Configuration feature.
7.
Under Configuration Location, in the Physical path box, type the physical path or click the browse button (...) to locate the physical path of the configuration directory.
8.
In the User name box, type a user name of an account that has access to the configuration directory. Then in the Password and Confirm Password boxes, type the password associated with this user account.
- 9.



In the Actions pane, click Apply.

10.

In the Encryption Keys Password dialog box, in the Enter encryption key password box, type the password that is used to access the encryption keys in the configuration directory. Then click OK. Note This is the password that was specified when the configuration files and encryption keys were exported.

11.

Close IIS Manager and then reopen it. In the Connections pane, click the server node.

12.

In Features View, double-click Management Service. 13. On the Management Service page, in the Actions pane, click Start Source: [http://technet.microsoft.com/en-us/library/cc771871\(WS.10\).aspx](http://technet.microsoft.com/en-us/library/cc771871(WS.10).aspx)

[70-643 PDF Dumps](#)

[70-643 Practice Test](#)

[70-643 Braindumps](#)



To Read the [Whole Q&As](#), please purchase the [Complete Version](#) from [Our website](#).

Try our product !

100% Guaranteed Success

100% Money Back Guarantee

365 Days Free Update

Instant Download After Purchase

24x7 Customer Support

Average 99.9% Success Rate

More than 800,000 Satisfied Customers Worldwide

Multi-Platform capabilities - [Windows](#), [Mac](#), [Android](#), [iPhone](#), [iPod](#), [iPad](#), [Kindle](#)

We provide exam PDF and VCE of Cisco, Microsoft, IBM, CompTIA, Oracle and other IT Certifications. You can view Vendor list of All Certification Exams offered:

<https://www.pass4itsure.com/allproducts>

Need Help

Please provide as much detail as possible so we can best assist you.

To update a previously submitted ticket:



 <p>One Year Free Update Free update is available within One Year after your purchase. After One Year, you will get 50% discounts for updating. And we are proud to boast a 24/7 efficient Customer Support system via Email.</p>	 <p>Money Back Guarantee To ensure that you are spending on quality products, we provide 100% money back guarantee for 30 days from the date of purchase.</p>	 <p>Security & Privacy We respect customer privacy. We use McAfee's security service to provide you with utmost security for your personal information & peace of mind.</p>
---	---	--

Any charges made through this site will appear as Global Simulators Limited.

All trademarks are the property of their respective owners.

Copyright © pass4itsure, All Rights Reserved.