



70-640^{Q&As}

TS: Windows Server 2008 Active Directory Configuring

Pass Microsoft 70-640 Exam with 100% Guarantee

Free Download Real Questions & Answers **PDF** and **VCE** file from:

<https://www.pass4itsure.com/70-640.html>

100% Passing Guarantee
100% Money Back Assurance

Following Questions and Answers are all new published by Microsoft
Official Exam Center

-  **Instant Download** After Purchase
-  **100% Money Back** Guarantee
-  **365 Days** Free Update
-  **800,000+** Satisfied Customers



**QUESTION 1**

You have an enterprise subordinate certification authority (CA). You have a custom certificate template that has a key length of 1,024 bits. The template is enabled for autoenrollment.

You increase the template key length to 2,048 bits.

You need to ensure that all current certificate holders automatically enroll for a certificate that uses the new template.

Which console should you use?

- A. Group Policy Management MMC Snap-In
- B. Certificates MMC Snap-In on the Certificate Authority
- C. Certificate Templates MMC Snap-In
- D. Certification Authority MMC Snap-In

Correct Answer: C

Reference: <http://technet.microsoft.com/en-us/library/cc771246.aspx>

Re-Enroll All Certificate Holders This procedure is used when a critical change is made to the certificate template and you want all subjects that hold a certificate that is based on this template to re-enroll as quickly as possible. The next time the subject verifies the version of the certificate against the version of the template on the certification authority (CA), the subject will re-enroll.

Membership in Domain Admins or Enterprise Admins, or equivalent, is the minimum required to complete this procedure. For more information, see Implement Role-Based Administration. To re-enroll all certificate holders

1.

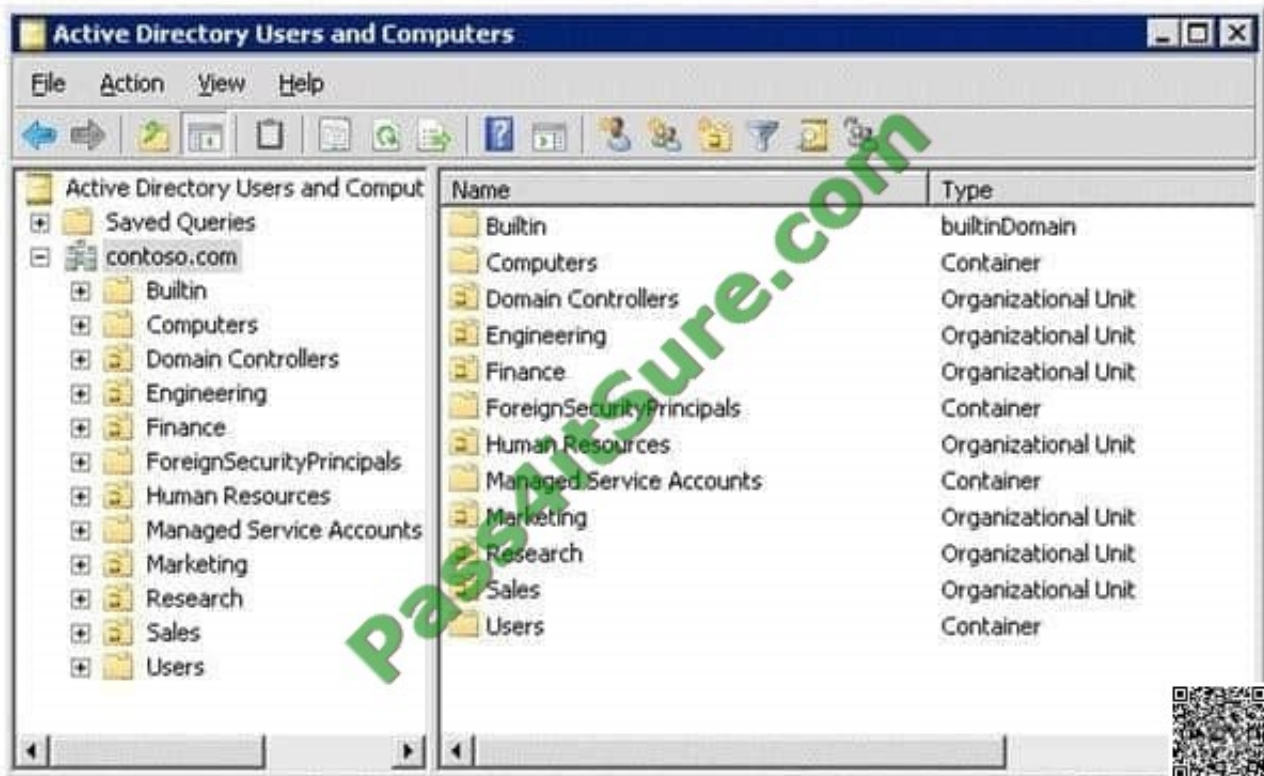
Open the Certificate Templates snap-in.

2.

Right-click the template that you want to use, and then click Reenroll All Certificate Holders.

QUESTION 2

Your network contains an Active Directory domain. The domain is configured as shown in the exhibit.



You have a Group Policy Object (GPO) linked to the domain.

You need to ensure that the settings in the GPO are not processed by user accounts or computer accounts in the Finance organizational unit (OU). You must achieve this goal by using the minimum amount of administrative effort.

What should you do?

- A. Modify the Group Policy Permission.
- B. Configure WMI filtering.
- C. Enable block inheritance.
- D. Enable loopback processing in replace mode.
- E. Configure the link order.
- F. Configure Group Policy Preferences.
- G. Link the GPO to the Human Resources OU.
- H. Configure Restricted Groups.
- I. Enable loopback processing in merge mode.
- J. Link the GPO to the Finance OU.

Correct Answer: C

Reference:



<http://technet.microsoft.com/en-us/library/cc731076.aspx>

Block Inheritance

You can block inheritance for a domain or organizational unit. Blocking inheritance prevents Group Policy objects (GPOs) that are linked to higher sites, domains, or organizational units from being automatically inherited by the child-level.

QUESTION 3

Your network contains an Active Directory forest named contoso.com. The functional level of the forest is Windows Server 2008 R2.

You have four Active Directory sites. Each site has multiple Active Directory subnets. You need to identify all of the authentication requests that originate from client computers that are not associated to an Active Directory subnet.

What should you use?

- A. The %Systemroot%\System32\Network_lu.log log file
- B. The %Systemroot%\Debug\Netsetup.log log file
- C. The Authentication User Interface operational log
- D. The %Systemroot%\Debug\Netlogon.log log file

Correct Answer: B

Identifying Whether You Have a Problem Authenticating

You can identify whether you have a problem authenticating (or joining) a computer to a domain by verifying that the local workstation is working. Do this by running the Netdiag tool. Read the output from the top, and look for the words

"ERROR" or "FATAL." (Many failures are not relevant to the domain itself; but you should follow up on them because they involve network connectivity issues.) If you don't find these words in the output, continue as follows:

Run netdiag /v (verbose mode). Do you receive any specific error messages or FATAL errors? If the answer to the preceding question is "No," run netdiag /debug.

Do you receive any specific error messages or FATAL errors?

If Netdiag displays an error or failure with the domain itself, check the % SystemRoot %\debug\netsetup.log file for join errors.

QUESTION 4

Your company has two offices. The offices are located in Miami and London.

The network contains an Active Directory forest named contoso.com. The forest contains two child domains named miami.contoso.com and london.contoso.com.

The domain contains 50 domain controllers that run Windows Server 2008 R2. Each office is configured as an Active Directory site.



The forest contains a custom attribute named SecurityAccessCode.

You recently configured a domain controller named DC22 as a global catalog server.

You need to verify that SecurityAccessCode is configured to replicate to DC22.

What should you do?

- A. Run the dsadd.exe command
- B. Run the nltest.exe command.
- C. Run the Set-AdDomain cmdlet.
- D. Run the dsmove.exe command.
- E. Run the dcpromo.exe command.
- F. Run the Move-AdDirectoryServer cmdlet.
- G. Use the Active Directory Schema snap-in.
- H. Use the Active Directory Users and Computers console.

Correct Answer: G

QUESTION 5

Your company has a main office and a branch office. All servers are located in the main office. The network contains an Active Directory forest named adatum.com. The forest contains a domain controller named MainDC that runs Windows Server 2008 R2 Enterprise and a member server named FileServer that runs Windows Server 2008 R2 Standard.

You have a kiosk computer named Public_Computer that runs Windows 7. Public_Computer is not connected to the network.

You need to join Public_Computer to the adatum.com domain.

What should you do? To answer, move the appropriate actions from the Possible Actions list to the Necessary Actions area and arrange them in the correct order.

Select and Place:



Possible Actions	Necessary Actions
Restart Public_Computer.	
Copy the BLOB file to MainDC.	
Copy the BLOB file to Public_Computer.	
Run netdom.exe /add on MainDC.	
Run djoin.exe /requestODJ on MainDC.	
Run djoin.exe /provision on FileServer.	
Run netdom.exe /join on Public_Computer.	
Run djoin.exe /provision on Public_Computer.	
Run djoin.exe /requestODJ on Public_Computer.	

Correct Answer:

Possible Actions	Necessary Actions
	Run djoin.exe /provision on FileServer.
Copy the BLOB file to MainDC.	Copy the BLOB file to Public_Computer.
	Run djoin.exe /requestODJ on Public_Computer.
Run netdom.exe /add on MainDC.	Restart Public_Computer.
Run djoin.exe /requestODJ on MainDC.	
Run netdom.exe /join on Public_Computer.	
Run djoin.exe /provision on Public_Computer.	

Reference 1:

MS Press - Self-Paced Training Kit (Exam 70-640) (2nd Edition, July 2012) pages 217, 218 Offline Domain Join Offline domain join is also useful when a computer is deployed in a lab or other disconnected environment.

When the computer is connected to the domain network and started for the first time, it will already be a member of the domain. This also helps to ensure that Group Policy settings are applied at the first startup.

Four major steps are required to join a computer to the domain by using offline domain join:

1. Log on to a computer in the domain that is running Windows Server 2008 R2 or Windows 7 with an account that has



permissions to join computers to the domain.

2. Use the DJoin command to provision a computer for offline domain join. This step prepopulates Active Directory with the information that Active Directory needs to join the computer to the domain, and exports the information called a blob to a text file.
3. At the offline computer that you want to join the domain use DJoin to import the blob into the Windows directory.
4. When you start or restart the computer, it will be a member of the domain.

[Latest 70-640 Dumps](#)

[70-640 PDF Dumps](#)

[70-640 Practice Test](#)



To Read the [Whole Q&As](#), please purchase the [Complete Version](#) from [Our website](#).

Try our product !

100% Guaranteed Success

100% Money Back Guarantee

365 Days Free Update

Instant Download After Purchase

24x7 Customer Support

Average 99.9% Success Rate

More than 800,000 Satisfied Customers Worldwide

Multi-Platform capabilities - [Windows](#), [Mac](#), [Android](#), [iPhone](#), [iPod](#), [iPad](#), [Kindle](#)

We provide exam PDF and VCE of Cisco, Microsoft, IBM, CompTIA, Oracle and other IT Certifications. You can view Vendor list of All Certification Exams offered:

<https://www.pass4itsure.com/allproducts>

Need Help

Please provide as much detail as possible so we can best assist you.

To update a previously submitted ticket:



 <p>One Year Free Update Free update is available within One Year after your purchase. After One Year, you will get 50% discounts for updating. And we are proud to boast a 24/7 efficient Customer Support system via Email.</p>	 <p>Money Back Guarantee To ensure that you are spending on quality products, we provide 100% money back guarantee for 30 days from the date of purchase.</p>	 <p>Security & Privacy We respect customer privacy. We use McAfee's security service to provide you with utmost security for your personal information & peace of mind.</p>
---	---	--

Any charges made through this site will appear as Global Simulators Limited.

All trademarks are the property of their respective owners.

Copyright © pass4itsure, All Rights Reserved.