



70-535^{Q&As}

Architecting Microsoft Azure Solutions

Pass Microsoft 70-535 Exam with 100% Guarantee

Free Download Real Questions & Answers **PDF** and **VCE** file from:

<https://www.pass4itsure.com/70-535.html>

100% Passing Guarantee
100% Money Back Assurance

Following Questions and Answers are all new published by Microsoft
Official Exam Center

- ⚙ **Instant Download** After Purchase
- ⚙ **100% Money Back** Guarantee
- ⚙ **365 Days** Free Update
- ⚙ **800,000+** Satisfied Customers



**QUESTION 1**

You have an existing server that runs Windows Server. You plan to create a base image of this server. You will use this base image to prepare several virtual servers for future use.

After the base image is prepared, you will capture it by using the Azure management portal. You must use the System Preparation Tool (Sysprep) to prepare the server so that the base image can be captured.

You need to prepare the server so that the base image can be captured. What should you do? To answer, configure the appropriate options in the dialog box in the answer area.

Hot Area:

System Preparation Tool dialog box

System Preparation Tool 3.14

System Preparation Tool (Sysprep) prepares the machine for hardware independence and cleanup.

System Cleanup Action

Enter System Out-of-Box Experience (OOBE)

Enter System Audit Mode

☐ Generalize

Shutdown Options

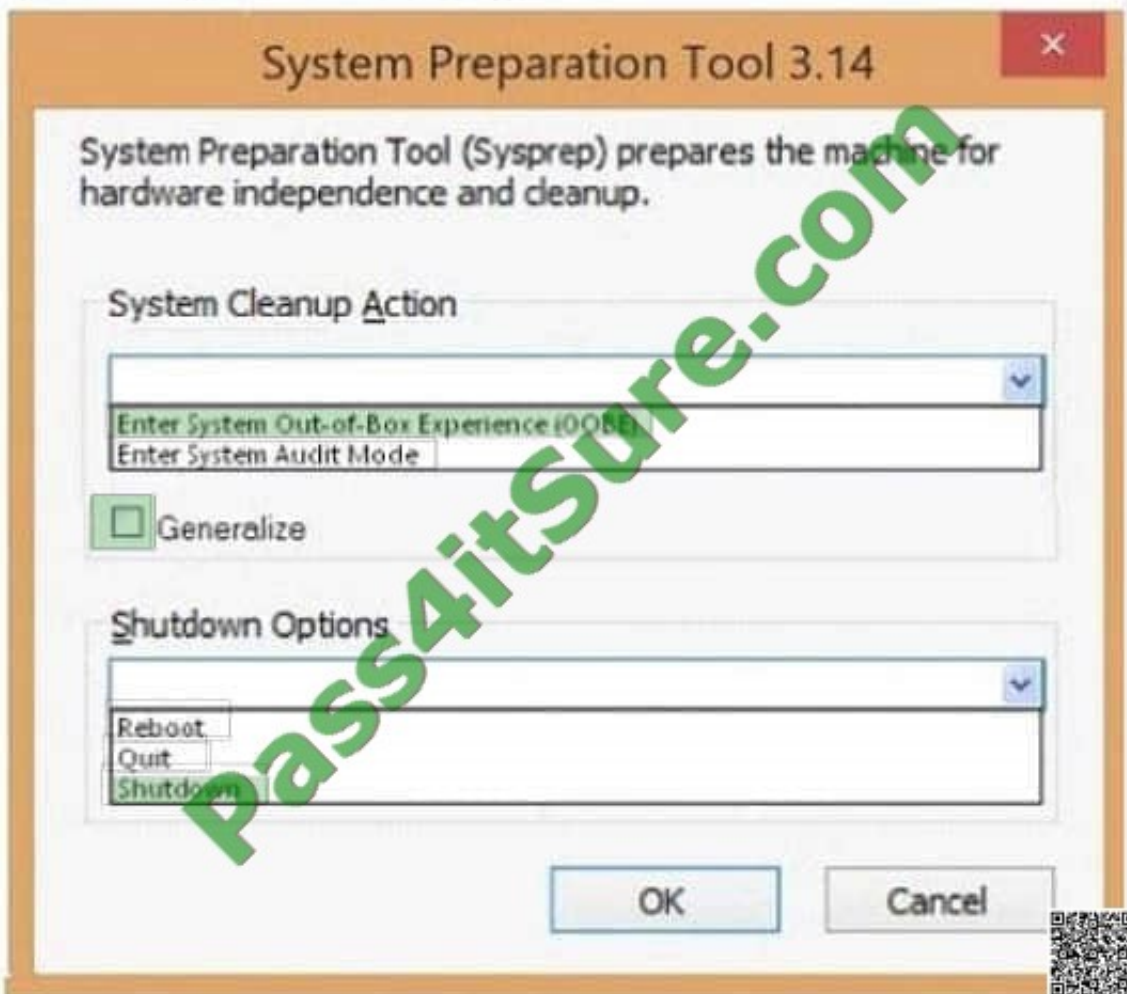
Reboot

Quit

Shutdown

OK Cancel

Correct Answer:

**System Preparation Tool dialog box**

Capture the virtual machine

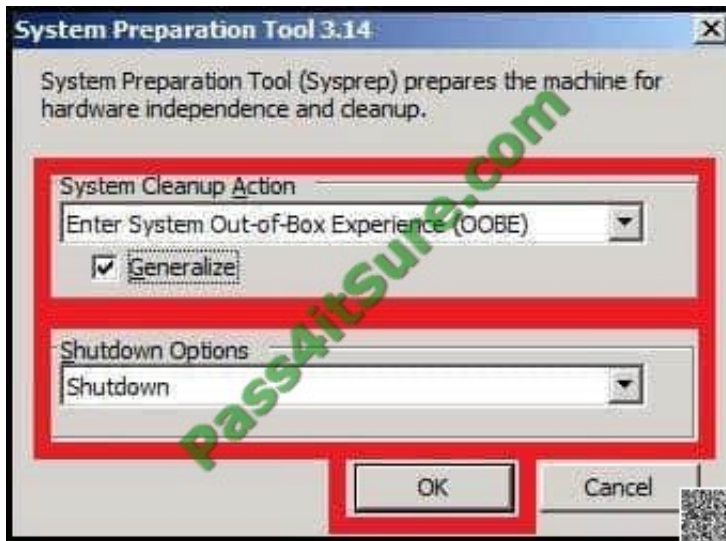
1.
In the Azure portal, Connect to the virtual machine.
2.
Open a Command Prompt window as an administrator.
3.
Change the directory to %windir%\system32\sysprep, and then run sysprep.exe.
4.
The System Preparation Tool dialog box appears. Do the following:

In System Cleanup Action, select Enter System Out-of-Box Experience (OOBE) and make sure that Generalize is checked.

In Shutdown Options, select Shutdown.



Click OK.



Etc.

References: <https://docs.microsoft.com/en-us/azure/virtualmachines/windows/classic/capture-image>

QUESTION 2

You are the administrator for your company's virtual environment. The company plans to deploy an e-commerce application that will experience random performance fluctuations.

The application must be able to scale to meet temporary needs and be idle when the needs disappear. You create an automatic virtual machine (VM) scale set to support the application.

You need to set up automatic scaling for the scale set.

Which three tools can you use? Each correct answer presents a complete solution.

NOTE: Each correct selection is worth one point.

- A. Azure Resource Explorer
- B. Azure Traffic Manager
- C. Resource Manager templates
- D. Azure Command-Line Interface (CLI)
- E. Azure PowerShell

Correct Answer: ADE



QUESTION 3

You want to deploy two new VMs to the DB subnet. You need to modify the virtual network to expand the size of the DB



subnet to allow more IP addresses. Which three steps should you perform in sequence? To answer, move the appropriate actions from the list of actions to the answer area and arrange them in the correct order.

Select and Place:

Action	Answer Area
Empty and delete the Web Subnet.	 
Empty and reconfigure the DB subnet to be larger.	
Empty and delete the Virtual Network.	
Empty and reconfigure the Web subnet to be larger.	
Recreate the Virtual Network as now required.	
Create the Web subnet to be larger.	
Empty and delete the DB Subnet.	
Create the DB subnet to be larger.	

Correct Answer:



Action	Answer Area
Empty and delete the Web Subnet.	Empty and delete the DB Subnet.
Empty and reconfigure the DB subnet to be larger.	Create the DB subnet to be larger.
Empty and delete the Virtual Network.	Recreate the Virtual Network as now required.
Empty and reconfigure the Web subnet to be larger.	
Create the Web subnet to be larger.	



QUESTION 4

Your company has an on-premises Active Directory Domain Services (AD DS) domain and an established Azure Active Directory (Azure AD) environment.

Your company would like users to be automatically signed in when they are on their corporate desktops that are connected to the corporate network.

You need to enable single sign-on (SSO) for company users.

Solution: Install and configure an on-premises Active Directory Federation Services (AD FS) server with a trust established between the AD FS server and Azure AD.

Does the solution meet the goal?

A. Yes

B. No

Correct Answer: B

Single sign on (SSO) can be enabled via Azure AD Connect. Reference: <https://docs.microsoft.com/en-us/azure/active-directory/connect/active-directory-aadconnect-ssso>

QUESTION 5



You need to plan the business continuity strategy.

For each requirement, what should you recommend? To answer, select the appropriate option from each list in the answer area.

Hot Area:

Answer Area

You must ensure that customer facing data is replicated geographically.

Shard the database horizontally and place each shard in a different datacenter.
Create multiple instances of the SQL Database. Replicate the data between the instances.
Use SQL Azure's backup feature to create a BACPAC file. Place the file in Blob storage.
Replicate the data by using asynchronous replication.

You must ensure that client connect to Azure websites that run in the region closest to them.

Use Traffic Manager to route traffic between geographic instances.
Configure a local endpoint in the Azure Load Balancer Server. Configure the endpoints to use the same IP address.
Assign separate URLs to multiple website instances. Configure DNS records to resolve the URL for each instance.
Configure the site in an Azure WebSite and configure a WebJob to automate the failover.



Correct Answer:

Answer Area

You must ensure that customer facing data is replicated geographically.

Shard the database horizontally and place each shard in a different datacenter.
Create multiple instances of the SQL Database. Replicate the data between the instances.
Use SQL Azure's backup feature to create a BACPAC file. Place the file in Blob storage.
Replicate the data by using asynchronous replication.

You must ensure that client connect to Azure websites that run in the region closest to them.

Use Traffic Manager to route traffic between geographic instances.
Configure a local endpoint in the Azure Load Balancer Server. Configure the endpoints to use the same IP address.
Assign separate URLs to multiple website instances. Configure DNS records to resolve the URL for each instance.
Configure the site in an Azure WebSite and configure a WebJob to automate the failover.



[Latest 70-535 Dumps](#)

[70-535 Practice Test](#)

[70-535 Study Guide](#)



To Read the [Whole Q&As](#), please purchase the [Complete Version](#) from [Our website](#).

Try our product !

100% Guaranteed Success

100% Money Back Guarantee

365 Days Free Update

Instant Download After Purchase

24x7 Customer Support

Average 99.9% Success Rate

More than 800,000 Satisfied Customers Worldwide

Multi-Platform capabilities - Windows, Mac, Android, iPhone, iPod, iPad, Kindle

We provide exam PDF and VCE of Cisco, Microsoft, IBM, CompTIA, Oracle and other IT Certifications. You can view Vendor list of All Certification Exams offered:

<https://www.pass4itsure.com/allproducts>

Need Help

Please provide as much detail as possible so we can best assist you.

To update a previously submitted ticket:



 One Year Free Update <p>Free update is available within One Year after your purchase. After One Year, you will get 50% discounts for updating. And we are proud to boast a 24/7 efficient Customer Support system via Email.</p>	 Money Back Guarantee <p>To ensure that you are spending on quality products, we provide 100% money back guarantee for 30 days from the date of purchase.</p>	 Security & Privacy <p>We respect customer privacy. We use McAfee's security service to provide you with utmost security for your personal information & peace of mind.</p>
---	---	--

Any charges made through this site will appear as Global Simulators Limited.

All trademarks are the property of their respective owners.

Copyright © pass4itsure, All Rights Reserved.