



# 70-534<sup>Q&As</sup>

Architecting Microsoft Azure Solutions 2015

## Pass Microsoft 70-534 Exam with 100% Guarantee

Free Download Real Questions & Answers **PDF** and **VCE** file from:

<https://www.pass4itsure.com/70-534.html>

100% Passing Guarantee  
100% Money Back Assurance

Following Questions and Answers are all new published by Microsoft  
Official Exam Center

- ⚙ **Instant Download** After Purchase
- ⚙ **100% Money Back** Guarantee
- ⚙ **365 Days** Free Update
- ⚙ **800,000+** Satisfied Customers





### QUESTION 1

You need to design the business continuity framework. Which technology should you use?

- A. Hyper-V Replica
- B. Azure Backup
- C. Azure Site Recovery
- D. Azure StoreSimple

Correct Answer: C

Azure Site Recovery can protect Microsoft Hyper-V, VMware, and physical servers, and you can use Azure or your secondary datacenter as your recovery site.

From scenario: The company has a human resources (HR) application named HRApp that stores data in an on-premises SQL Server database. The database must have at least two copies, but data to support backups and business

continuity must stay in Trey Research locations only. The data must remain on-premises and cannot be stored in the cloud.

References: <https://azure.microsoft.com/en-us/services/site-recovery/>

---

### QUESTION 2

You are designing an Azure application that provides online backup storage for hundreds of media files. Each file is larger than 1GB. The data storage solution has the following requirements:

\*

Be capable of storing an average of 2 terabytes (TB) of data for each user.

\*

Support sharing of data between all Microsoft Azure instances

\*

Provide random read/write access

You need to recommend a durable data storage solution.

What should you recommend?

- A.  
Store data in the VHD file
- B.



Azure Page Blob service

C.

Azure Block Blob service

D.

Local storage on the VM

Correct Answer: B

References: <https://msdn.microsoft.com/en-us/library/azure/ee691964.aspx>

---

### QUESTION 3

You manage a set of virtual machines (VMs) deployed to the cloud service named fabrikamVM. You configure auto scaling according to the following parameters:

\*

With an instance range of two to six instances

\*

To maintain CPU usage between 70 and 80 percent

\*

To scale up one instance at a time

\*

With a scale up wait time of 30 minutes

\*

To scale down one instance at a time

\*

With a scale down wait time of 30 minutes

You discover the following usage pattern of a specific application:

\*

The application peaks very quickly, and the peak lasts for several hours.

\*

CPU usage stays above 90 percent for the first 1 to 1.5 hours after usage increases. After 1.5 hours, the CPU usage falls to about 75 percent until application usage begins to decline.

You need to modify the auto scaling configuration to scale up faster when usage peaks. What are two possible ways to



achieve this goal? Each correct answer presents a complete solution.

A.

Decrease the scale down wait time.

B.

Decrease the scale up wait time.

C.

Increase the number of scale up instances.

D.

Increase the scale up wait time.

E.

Increase the maximum number of instances

Correct Answer: BC

---

#### QUESTION 4

You manage two solutions in separate Azure subscriptions. You need to ensure that the two solutions can communicate on a private network. Which three actions should you perform in sequence?

Select and Place:



Action	Answer Area
Check ExpressRoute on the virtual network configuration page.	
Update the connection certificate.	
Create the static routing gateways.	
Connect the VPN gateways.	
Add local networks to the VNets.	
Run Set-AzureVNetIP PowerShell cmdlet.	
Create the dynamic routing gateways.	
Edit the ACL on the virtual network gateway to accept connections.	

Correct Answer:



Action	Answer Area
Check ExpressRoute on the virtual network configuration page.	Add local networks to the VNets.
Update the connection certificate.	Create the dynamic routing gateways.
Create the static routing gateways.	Connect the VPN gateways.
Run Set-AzureVNetIP PowerShell cmdlet.	
Edit the ACL on the virtual network gateway to accept connections.	

Step 1 - Plan your IP address ranges

Step 2 - Create the virtual networks

Step 3 - Configure the local site

Step 4 - Create the virtual network gateway

Step 5 - Configure TestVNet4 settings

Step 6 - Update the local sites

Step 7 - Retrieve values from the network configuration file

Step 8 - Create the VPN gateway connections References: <https://docs.microsoft.com/en-us/azure/vpn-gateway/vpn-gateway-howto-vnetvnet-portal-classic#create-the-dynamic-routing-gateways-for-each-vnet>

## QUESTION 5

You have an existing server that runs Windows Server. You plan to create a base image of this server. You will use this base image to prepare several virtual servers for future use.

After the base image is prepared, you will capture it by using the Azure management portal. You must use the System Preparation Tool (Sysprep) to prepare the server so that the base image can be captured.



You need to prepare the server so that the base image can be captured. What should you do? To answer, configure the appropriate options in the dialog box in the answer area.

Hot Area:

### System Preparation Tool dialog box

System Preparation Tool 3.14

System Preparation Tool (Sysprep) prepares the machine for hardware independence and cleanup.

System Cleanup Action

Enter System Out-of-Box Experience (OOBE)  
Enter System Audit Mode

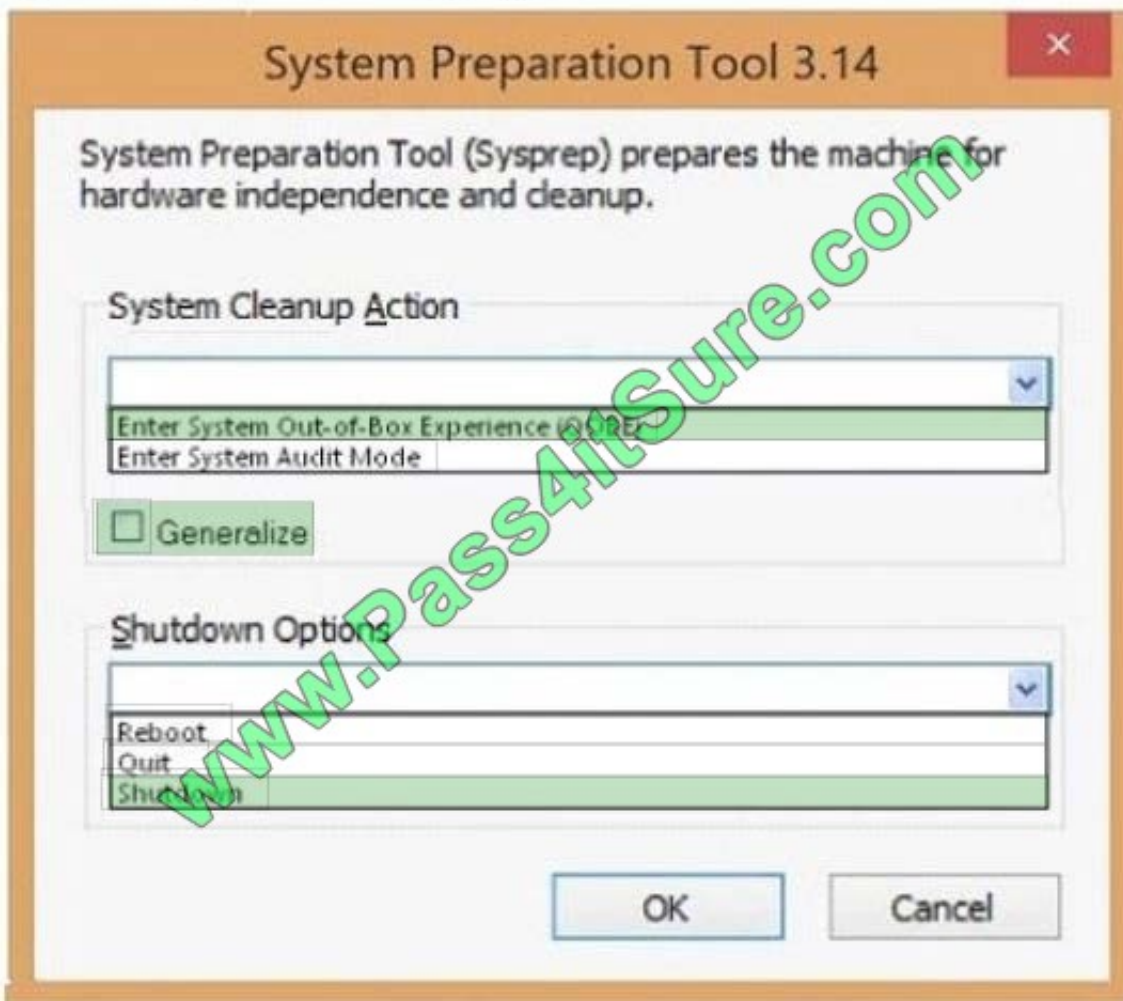
☐ Generalize

Shutdown Options

Reboot  
Quit  
Shutdown

OK Cancel

Correct Answer:

**System Preparation Tool dialog box**

Capture the virtual machine

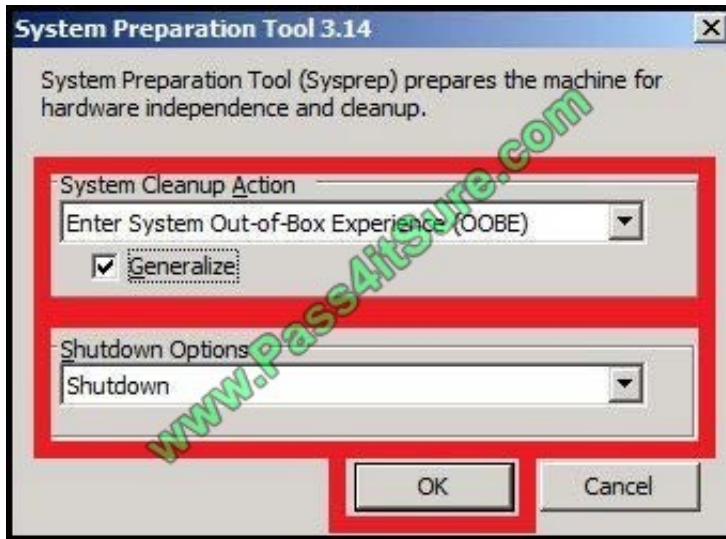
1. In the Azure portal, Connect to the virtual machine.
2. Open a Command Prompt window as an administrator.
3. Change the directory to %windir%\system32\sysprep, and then run sysprep.exe.
4. The System Preparation Tool dialog box appears. Do the following:

In System Cleanup Action, select Enter System Out-of-Box Experience (OOBE) and make sure that Generalize is checked.

In Shutdown Options, select Shutdown.

Click OK.





Etc.

References: <https://docs.microsoft.com/en-us/azure/virtualmachines/windows/classic/capture-image>

[70-534 VCE Dumps](#)

[70-534 Study Guide](#)

[70-534 Braindumps](#)



To Read the [Whole Q&As](#), please purchase the [Complete Version](#) from [Our website](#).

## Try our product !

100% Guaranteed Success

100% Money Back Guarantee

365 Days Free Update

Instant Download After Purchase

24x7 Customer Support

Average 99.9% Success Rate

More than 800,000 Satisfied Customers Worldwide

Multi-Platform capabilities - [Windows](#), [Mac](#), [Android](#), [iPhone](#), [iPod](#), [iPad](#), [Kindle](#)

We provide exam PDF and VCE of Cisco, Microsoft, IBM, CompTIA, Oracle and other IT Certifications. You can view Vendor list of All Certification Exams offered:

<https://www.pass4itsure.com/allproducts>

## Need Help

Please provide as much detail as possible so we can best assist you.

To update a previously submitted ticket:



 <b>One Year Free Update</b> <p>Free update is available within One Year after your purchase. After One Year, you will get 50% discounts for updating. And we are proud to boast a 24/7 efficient Customer Support system via Email.</p>	 <b>Money Back Guarantee</b> <p>To ensure that you are spending on quality products, we provide 100% money back guarantee for 30 days from the date of purchase.</p>	 <b>Security &amp; Privacy</b> <p>We respect customer privacy. We use McAfee's security service to provide you with utmost security for your personal information &amp; peace of mind.</p>
---	---	--

Any charges made through this site will appear as Global Simulators Limited.

All trademarks are the property of their respective owners.

Copyright © pass4itsure, All Rights Reserved.