



# 70-497<sup>Q&As</sup>

Software Testing with Visual Studio

## Pass Microsoft 70-497 Exam with 100% Guarantee

Free Download Real Questions & Answers **PDF** and **VCE** file from:

<https://www.pass4itsure.com/70-497.html>

100% Passing Guarantee  
100% Money Back Assurance

Following Questions and Answers are all new published by Microsoft  
Official Exam Center

- ⚙ **Instant Download** After Purchase
- ⚙ **100% Money Back** Guarantee
- ⚙ **365 Days** Free Update
- ⚙ **800,000+** Satisfied Customers





## QUESTION 1

You are using Microsoft Test Manager (MTM) to create a test plan for testing an ASP.NET website.

Your test plan needs to validate a set of critical business functionalities for the current sprint. All business functionalities are documented in the requirements document published to the project portal.

You need to associate your test plan with the requirements document.

What should you do?

- A. Add a link to the requirements document in the Links section of the Properties view of the test plan.
- B. Click Copy Link in the Properties view of the test plan to link the requirements document on the project portal to the test plan.
- C. In the Area path drop-down list in the Properties view of the test plan, right-click the test plan area path node relevant to the requirements being tested. Select Add link to associate the requirements document link on the project portal with the area path node.
- D. Click Link next to the Description box in the Properties view of the test plan to link the requirements document on the project portal to the test plan.
- E. Click Link next to the Name box in the Properties view of the test plan to link the requirements document on the project portal to the test plan.

Correct Answer: A

We would typically add all requirements in the sprint to the test plan to associate the acceptance tests with the corresponding requirement. The figure below shows how we use a work item query matching the Requirement Category and Sprint 1 to find the requirements that we now can add to our plan.

Adding requirements for Sprint 1 to our test plan

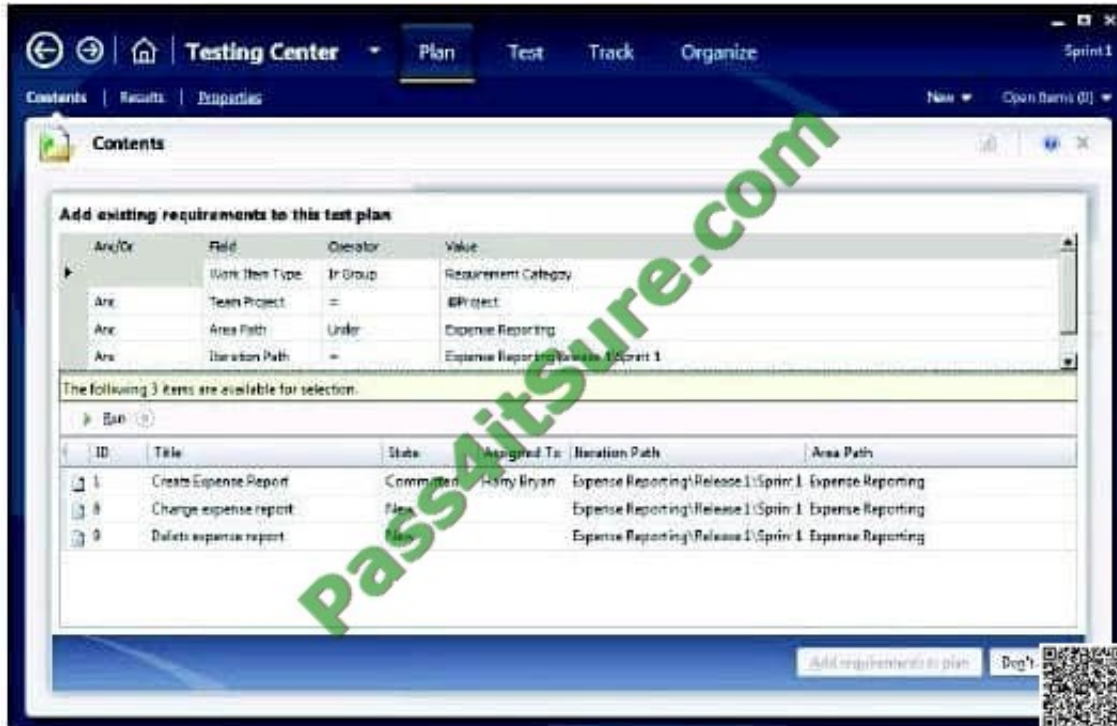
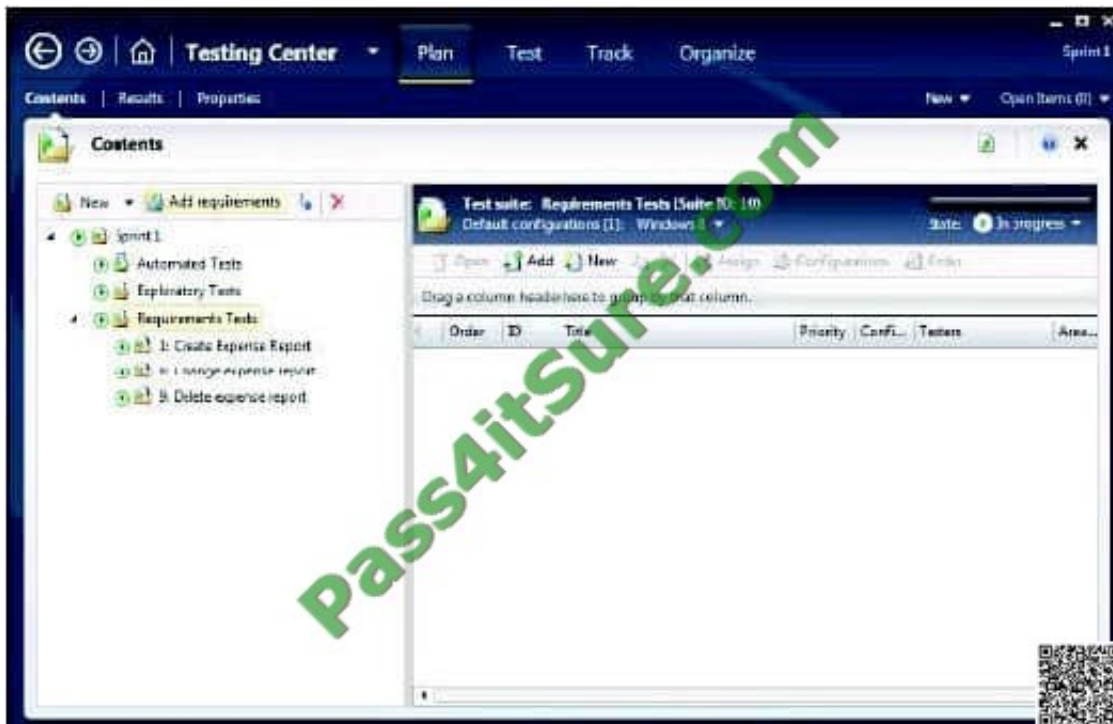


Figure 2, Complete structure for the Sprint 1 test plan



## QUESTION 2

You are using Microsoft Test Manager (MTM).

Your company plans to support SQL Server and third-party databases for the application under test.



You need to test both the SQL Server and third-party databases using one test case to capture test results.

What are two possible ways to achieve this goal? (Each correct answer presents a complete solution. Choose two.)

- A. Add new database run options.
- B. Add new database test settings.
- C. Add a new database test configuration.
- D. Add new database test configuration variables.

Correct Answer: BD

B: Using Visual Studio, you can run your tests and also collect data and diagnostics when you run your tests. You use test settings to specify the data and diagnostics that you want to collect.



You can use Test settings in Microsoft Test Manager and Visual Studio to collect extra data when you run your tests.

D: A test configuration is a combination of configuration variable values. Your configuration variables could be, for example, operating system, browser, CPU type, database. Reference: Setting Up Machines and Collecting Diagnostic Information Using Test Settings

### QUESTION 3

Your client has a Microsoft Visual Studio Team Foundation Server (TFS) 2013 installation with Lab Management. The client uses the Microsoft stack to test tools.

The testing team uses manual and automated testing.

You are testing the following two scenarios of Acceptance Criteria for the story:

Scenario 1



"Given a non-rewards member goes to the reservations site, when entering Tampa, FL, as the city

and an arrival date of 12/25/2014

and a departure date of 1/1/2015,

then the website should show a hotel room with the price of \$225 per night and another hotel room with a price of \$199 per night."

Scenario 2

"Given a non-rewards member goes to the reservations site, when entering Denver, CO, as the city

and an arrival date of 1/25/2015

and a departure date of 1/27/2015,

then the website should show a hotel room with the price of \$145 per night and another hotel room with a price of \$186 per night."

You need to create a flexible manual test case that can accommodate the two scenarios. The test should include three parameters, one for the city, one for the trip dates, and one for the results.

What should you do?

- A. On the Shared Steps window, in the description, enter @city, @dates, and @results to be used as parameters. After @city, enter (Denver, CO;Tampa, FL).
- B. On the Test Case window, in each appropriate test step, enter @city, @dates, and @results to be used as parameters. In the pane below that lists the parameter city, enter Denver, CO, and then Tampa, FL.
- C. On the Test Case window, in each appropriate test step, enter @city, @dates, and @results to be used as parameters. After @city, enter (Denver, CO;Tampa, FL).
- D. On the Test Plan window, in the description, enter @city, @dates, and @results to be used as parameters. After @city, enter CO;Tampa, FL).



A. B. C. D.

Correct Answer: A

When you plan manual tests there are some sequences of steps, such as logging in, that occur in many test cases. To avoid having to enter these sequences again and again, create shared steps. Reference: Share steps between test cases

---

#### QUESTION 4

You are using Microsoft Test Manager (MTM).

Your company no longer supports a particular configuration for the application under test.

You need to ensure that the test configuration is unavailable as an option in a test plan.

Which state should you assign to the test configuration?

A. Closed





- B. Inactive
- C. Disabled
- D. Idle

Correct Answer: B

When you have completed the tests in a test plan, set its state to Inactive. This prevents more tests from being run in this plan, but still allows the results of existing runs to be viewed. When the results are no longer required you can delete the test plan.

### QUESTION 5

You are using Microsoft Test Manager (MTM) to track bugs that have been found during testing.

You need to verify a bug by re-running the test case associated with the bug.

Which actions should you perform? (To answer, move the five appropriate actions from the list of actions to the answer area and arrange them in the correct order.)

Select and Place:

|  | Answer Area  |
|--|--|
| Select the <b>Assigned Bugs</b> activity.      |  |
| Click <b>Run test</b> .                        |  |
| Select the bug with an associated test result. |  |
| Select the <b>Verify Bug Tests</b> view.       |  |
| Navigate to the Testing Center.                |  |
| Select the <b>Verify Bugs</b> view.            |  |
| Select the <b>Test</b> activity.               |  |
| Click <b>Verify</b> .                          |  |

Correct Answer:



| Answer Area                               |  |
|---|--|
| Select the <b>Assigned Bugs</b> activity. | Navigate to the <b>Testing Center</b> .        |
| Click <b>Run test</b> .                   | Select the <b>Test</b> activity.               |
|   | Select the <b>Verify Bugs</b> view.            |
| Select the <b>Verify Bug Tests</b> view.  | Select the bug with an associated test result. |
|   | Click <b>Verify</b> .                          |
|   |  |
|   |  |
|   |  |
|   |  |

Note:

To verify that a bug is fixed

1. Open Microsoft Test Manager.
2. To run the test, choose the down-arrow on the center group switcher and then choose Testing Center.
3. On the center group menu bar, choose Test.
4. To view the bugs assigned to you, choose Verify Bugs.

The Verify Bugs view is displayed. It lists all the bugs that are currently assigned to you.

5. (Optional) To view the bugs that you created, choose Created by me.
6. Select the bug that you want to verify, and then choose Verify.

Finally choose Start test to rerun this test.



The screenshot shows the Microsoft Test Manager interface with the following annotations:

- 1. Go to the Testing Center (points to the Testing Center tab)
- 2. Go to the Test Activity (points to the Test tab)
- 3. Choose Verify Bugs (points to the Verify Bugs button)
- 4. Select bug with an associated test result (points to bug 2925)
- 5. Rerun the test to verify the bug is fixed (points to the 'Open test case' button)
- 6. Test Runner is started with the test from the test result ready to be run (points to the 'Start Test' button)
- 7. Choose the down arrow and select one of the options (points to the dropdown menu in the test runner)

The 'Verify Bugs' section shows a table of bugs:

| ID   | Title                            |
|------|----------------------------------|
| 2925 | Failed to update shopping cart   |
| 2926 | Shopping cart does not update... |
| 2927 | Application crashes when neg...  |

The 'Start Test' dialog box shows the 'Expected' result: 'Start App'.

The test runner shows the test step: '1. Launch App' with the expected result 'Start App'.

Reference: How to: Verify a Bug is Fixed Using Microsoft Test Manager

[Latest 70-497 Dumps](#)

[70-497 Study Guide](#)

[70-497 Exam Questions](#)





To Read the [Whole Q&As](#), please purchase the [Complete Version](#) from [Our website](#).

## Try our product !

100% Guaranteed Success

100% Money Back Guarantee

365 Days Free Update

Instant Download After Purchase

24x7 Customer Support

Average 99.9% Success Rate

More than 800,000 Satisfied Customers Worldwide

Multi-Platform capabilities - [Windows](#), [Mac](#), [Android](#), [iPhone](#), [iPod](#), [iPad](#), [Kindle](#)

We provide exam PDF and VCE of Cisco, Microsoft, IBM, CompTIA, Oracle and other IT Certifications. You can view Vendor list of All Certification Exams offered:

<https://www.pass4itsure.com/allproducts>

## Need Help

Please provide as much detail as possible so we can best assist you.

To update a previously submitted ticket:



|   |   |  |
|---|---|--|
|  <b>One Year Free Update</b> <p>Free update is available within One Year after your purchase. After One Year, you will get 50% discounts for updating. And we are proud to boast a 24/7 efficient Customer Support system via Email.</p> |  <b>Money Back Guarantee</b> <p>To ensure that you are spending on quality products, we provide 100% money back guarantee for 30 days from the date of purchase.</p> |  <b>Security &amp; Privacy</b> <p>We respect customer privacy. We use McAfee's security service to provide you with utmost security for your personal information &amp; peace of mind.</p> |
|---|---|--|

Any charges made through this site will appear as Global Simulators Limited.

All trademarks are the property of their respective owners.

Copyright © pass4itsure, All Rights Reserved.