



# 70-460<sup>Q&As</sup>

Transition Your MCITP: Business Intelligence Developer 2008 to  
MCSE: Business Intelligence

## Pass Microsoft 70-460 Exam with 100% Guarantee

Free Download Real Questions & Answers **PDF** and **VCE** file from:

<https://www.pass4itsure.com/70-460.html>

100% Passing Guarantee  
100% Money Back Assurance

Following Questions and Answers are all new published by Microsoft  
Official Exam Center

- ⚙️ **Instant Download** After Purchase
- ⚙️ **100% Money Back** Guarantee
- ⚙️ **365 Days** Free Update
- ⚙️ **800,000+** Satisfied Customers



**QUESTION 1**

You need to configure a hierarchy for DimProduct that meets the technical requirements. What should you do?

- A. Set ProductCategory as the parent of ProductSubcategory and set ProductSubCategory as the parent of ProductName. For ProductCategory, click Hide if Name Equals Parent
- B. Set ProductCategory as the parent of ProductSubCategory and set ProductSubcategory as the parent of ProductName. For ProductSubcategory, click Hide if Name Equals Parent.
- C. Set ProductName as the parent of ProductSubcategory and set ProductSubCategory as the parent of ProductCategory. For ProductCategory, click Hide if Name Equals Parent
- D. Set ProductName as the parent of ProductSubCategory and set ProductSubcategory as the parent of ProductCategory. For ProductSubcategory, click Hide if Name Equals Parent.

Correct Answer: B

---

**QUESTION 2**

You need to implement security in the cube to limit the sites visible to each user. What should you do?

- A. Create an SSAS database role in the cube for each user and assign the sites each user can access to his or her database role.
- B. Create an SSAS server role for each user and assign the sites each user can access to his or her server role.
- C. Create an SSAS database role and define a Multidimensional Expressions (MDX) calculation to implement dynamic dimension security.
- D. Create a view on the SalesTransactions table that uses the SecurityFilter and User table data to limit the sites for each user.

Correct Answer: C

---

**QUESTION 3**

You are developing a SQL Server Analysis Services (SSAS) cube for the sales department at your company.

The sales department requires the following set of metrics:

Unique count of customers

Unique count of products sold

Sum of sales



You need to ensure that the cube meets the requirements while optimizing query response time.

What should you do? (Each answer presents a complete solution. Choose all that apply.)

- A. Place the measures in a single measure group.
- B. Place the distinct count measures in separate measure groups.
- C. Use the additive measure group functions.
- D. Use the semiadditive measure group functions.
- E. Use the Count and Sum measure aggregation functions.
- F. Use the Distinct Count and Sum measure aggregation functions.

Correct Answer: BF

---

#### QUESTION 4

A company maintains separate environments for test, production, and quality assurance. The company uses the project deployment model for SQL Server Integration Services (SSIS) deployments.

You create an SSIS project to perform a weekly refresh of the company's data warehouse and cubes. The project has three packages.

You need to configure the project to ensure so that the test and production teams can run each package without manually adding server-specific information.

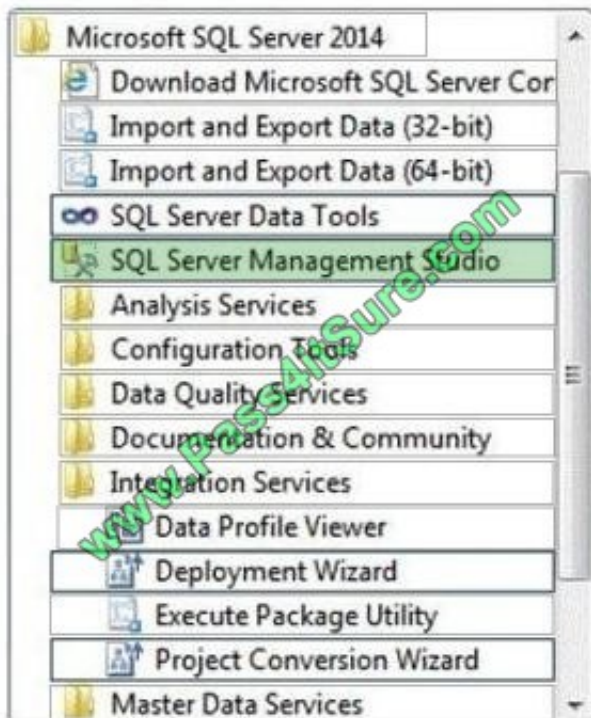
Which program should you use?

To answer, select the appropriate program in the answer area.

Hot Area:



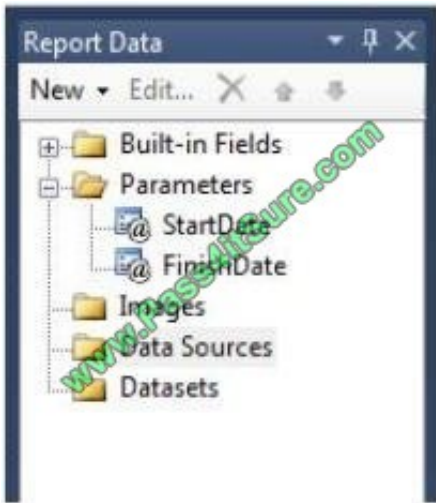
Correct Answer:



QUESTION 5



You are developing a SQL Server Reporting Services (SSRS) report that sources data from a SQL Azure database and a SQL Server Analysis Services (SSAS) cube. The cube contains a date dimension and other dimensions. The report design includes two report parameters named StartDate and FinishDate as shown in the following diagram.



The Data Type property of the parameters is set to Date/Time.

You need to create the dataset based on the SSAS cube. You also need to ensure that the dataset is filtered by the existing report parameters.

Which three actions should you perform in sequence? (To answer, move the appropriate actions from the list of actions to the answer area and arrange them in the correct order.)

Select and Place:



Create a data source using the Microsoft SQL Server connection type.

Modify the parameter expressions of the dataset to include the **ToString()** function.

Create two report parameters with Date/Time data types to receive their default values from the two hidden datasets.

Create a dataset with a parameterized filter using a hierarchy from the date dimension that uses the **Contains** operator. Do not close the Dataset Properties window.

Create a dataset with a parameterized filter using a hierarchy from the date dimension that uses the **Range (Inclusive)** operator. Do not close the Dataset Properties window.

Create a data source using the Microsoft SQL Server Analysis Services connection type.

Write an expression in the dataset Parameter Value textbox that converts the Date/Time parameter values to be compatible with the dimension member.

Select the **Parameters** page and then assign an expression to each query parameter to convert the report parameter values to the appropriate date dimension hierarchy member keys.

Correct Answer:



<p>Create a data source using the Microsoft SQL Server connection type.</p>	<p>Create a data source using the Microsoft SQL Server Analysis Services connection type.</p>
<p>Modify the parameter expressions of the dataset to include the <b>ToString()</b> function.</p>	<p>Create a dataset with a parameterized filter using a hierarchy from the date dimension that uses the <b>Range (Inclusive)</b> operator. Do not close the Dataset Properties window.</p>
<p>Create two report parameters with Date/Time data types to receive their default values from the two hidden datasets.</p>	
<p>Create a dataset with a parameterized filter using a hierarchy from the date dimension that uses the <b>Contains</b> operator. Do not close the Dataset Properties window.</p>	<p>Select the <b>Parameters</b> page and then assign an expression to each query parameter to convert the report parameter values to the appropriate date dimension hierarchy member keys.</p>
<p>Write an expression in the dataset Parameter Value textbox that converts the Date/Time parameter values to be compatible with the dimension member.</p>	

[70-460 PDF Dumps](#)

[70-460 Study Guide](#)

[70-460 Exam Questions](#)



To Read the [Whole Q&As](#), please purchase the [Complete Version](#) from [Our website](#).

## Try our product !

100% Guaranteed Success

100% Money Back Guarantee

365 Days Free Update

Instant Download After Purchase

24x7 Customer Support

Average 99.9% Success Rate

More than 800,000 Satisfied Customers Worldwide

Multi-Platform capabilities - [Windows](#), [Mac](#), [Android](#), [iPhone](#), [iPod](#), [iPad](#), [Kindle](#)

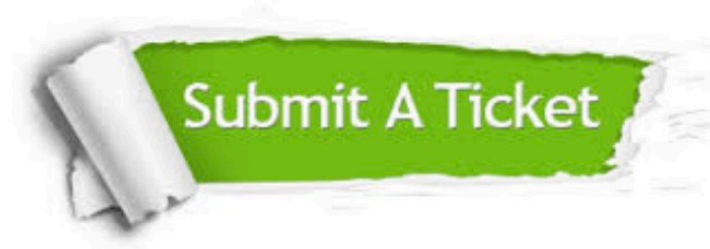
We provide exam PDF and VCE of Cisco, Microsoft, IBM, CompTIA, Oracle and other IT Certifications. You can view Vendor list of All Certification Exams offered:

<https://www.pass4itsure.com/allproducts>

## Need Help

Please provide as much detail as possible so we can best assist you.

To update a previously submitted ticket:



 <p><b>One Year Free Update</b> Free update is available within One Year after your purchase. After One Year, you will get 50% discounts for updating. And we are proud to boast a 24/7 efficient Customer Support system via Email.</p>	 <p><b>Money Back Guarantee</b> To ensure that you are spending on quality products, we provide 100% money back guarantee for 30 days from the date of purchase.</p>	 <p><b>Security &amp; Privacy</b> We respect customer privacy. We use McAfee's security service to provide you with utmost security for your personal information &amp; peace of mind.</p>
---	---	--

Any charges made through this site will appear as Global Simulators Limited.

All trademarks are the property of their respective owners.

Copyright © pass4itsure, All Rights Reserved.