



70-458^{Q&As}

Transition Your MCTS on SQL Server 2008 to MCSA: SQL Server 2012, Part 2

Pass Microsoft 70-458 Exam with 100% Guarantee

Free Download Real Questions & Answers **PDF** and **VCE** file from:

<https://www.pass4itsure.com/70-458.html>

100% Passing Guarantee
100% Money Back Assurance

Following Questions and Answers are all new published by Microsoft Official Exam Center

- ⚙ **Instant Download** After Purchase
- ⚙ **100% Money Back** Guarantee
- ⚙ **365 Days** Free Update
- ⚙ **800,000+** Satisfied Customers





QUESTION 1

You are designing a SQL Server Integration Services (SSIS) 2012 package that imports data from a Windows Azure SQL Database database into a SQL Server database.

The SSIS package has the following requirements:

Every night, a very large amount of data is imported into the staging database.

Package processing time must be minimized.

The package must run on its own dedicated server when it is deployed to production.

Transaction log activity when data is imported must be minimized.

You need to design the package to meet the requirements.

- A. Raw File
- B. OLE DB
- C. ODBC
- D. Bulk Insert

Correct Answer: B

QUESTION 2

Note: This question is part of a series of questions that use the same set of answer choices. An answer choice may be correct for more than one question in the series.

You administer a Microsoft SQL Server 2012 server that hosts a transactional database and a reporting database. The transactional database is updated through a web application and is operational throughout the day. The reporting database is only updated from the transactional database.



Database	Description
Transactional database	<p>Recovery model:</p> <ul style="list-style-type: none">• Full <p>Backup schedule:</p> <ul style="list-style-type: none">• Full database backup: midnight, daily• Differential database backup: on the hour, every two hours starting at 02:00 hours except at 00:00 hours• Log backup: every half hour, except at the times of full and differential backups
Reporting database	<p>Recovery model:</p> <ul style="list-style-type: none">• Simple <p>Backup schedule:</p> <ul style="list-style-type: none">• Full database backup: 01:00 hours daily• Differential database backup: 13:00 hours daily <p>Data updates:</p> <ul style="list-style-type: none">• Changes in data are updated from the transactional database to the reporting database at 00:30 hours and at 12:30 hours• The update takes 15 minutes

At 16:20 hours, you discover that pages 17, 137, and 205 on one of the database files are corrupted on the transactional database.

You need to ensure that the transactional database is restored. You also need to ensure that data loss is minimal.

What should you do?

- A. Perform a page restore.
- B. Perform a partial restore.
- C. Perform a point-in-time restore.
- D. Restore the latest full backup.
- E. Restore the latest full backup. Then, restore the latest differential backup.
- F. Restore the latest full backup, and restore the latest differential backup. Then, restore the latest log backup.
- G. Restore the latest full backup, and restore the latest differential backup. Then, restore each log backup taken before the time of failure from the most recent differential backup.
- H. Restore the latest full backup. Then, restore each differential backup taken before the time of failure from the most recent full backup.

Correct Answer: A

QUESTION 3

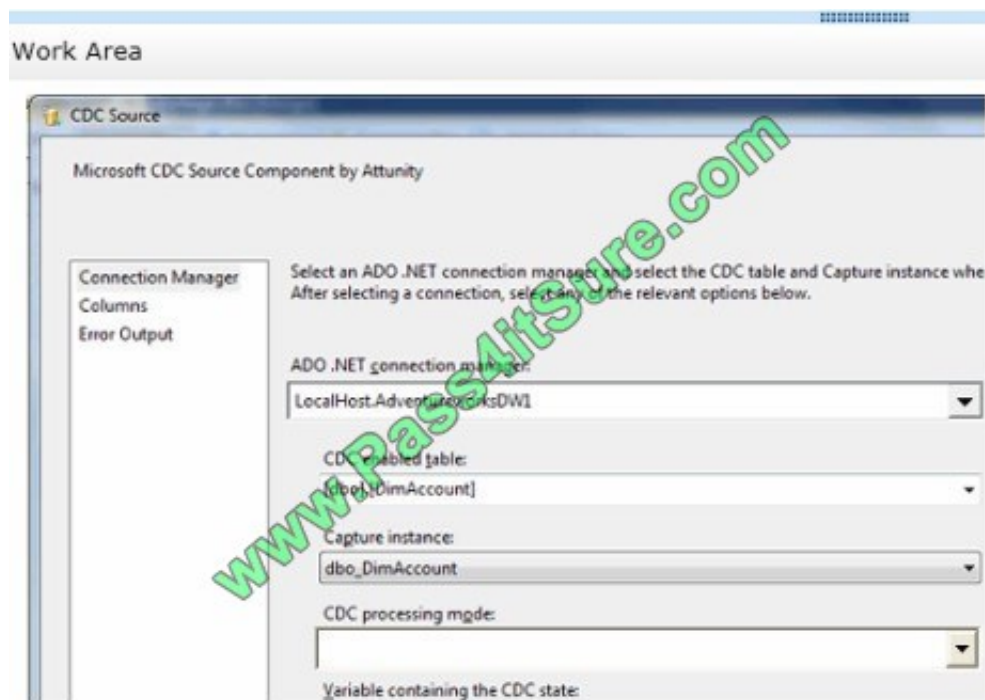


You are developing a SQL Server Integration Services (SSIS) package. The data source for the data flow task is a table that has been configured as a change data capture (CDC) table. You are using a CDC Source component to obtain the CDC data.

The data source will be polled once per hour. The data is updated with multiple important status changes per minute.

For each captured data change, the before and after values must be included. You need to configure the CDC Source component.

Which CDC processing mode should you select? (To answer, configure the appropriate option in the dialog box in the answer area.)



Hot Area:



CDC Source

Microsoft CDC Source Component by Attunity

Connection Manager
Columns
Error Output

Select an ADO .NET connection manager and select the CDC table and Capture instance whe
After selecting a connection, select any of the relevant options below.

ADO .NET connection manager:
LocalHost.AdventureworksDW1

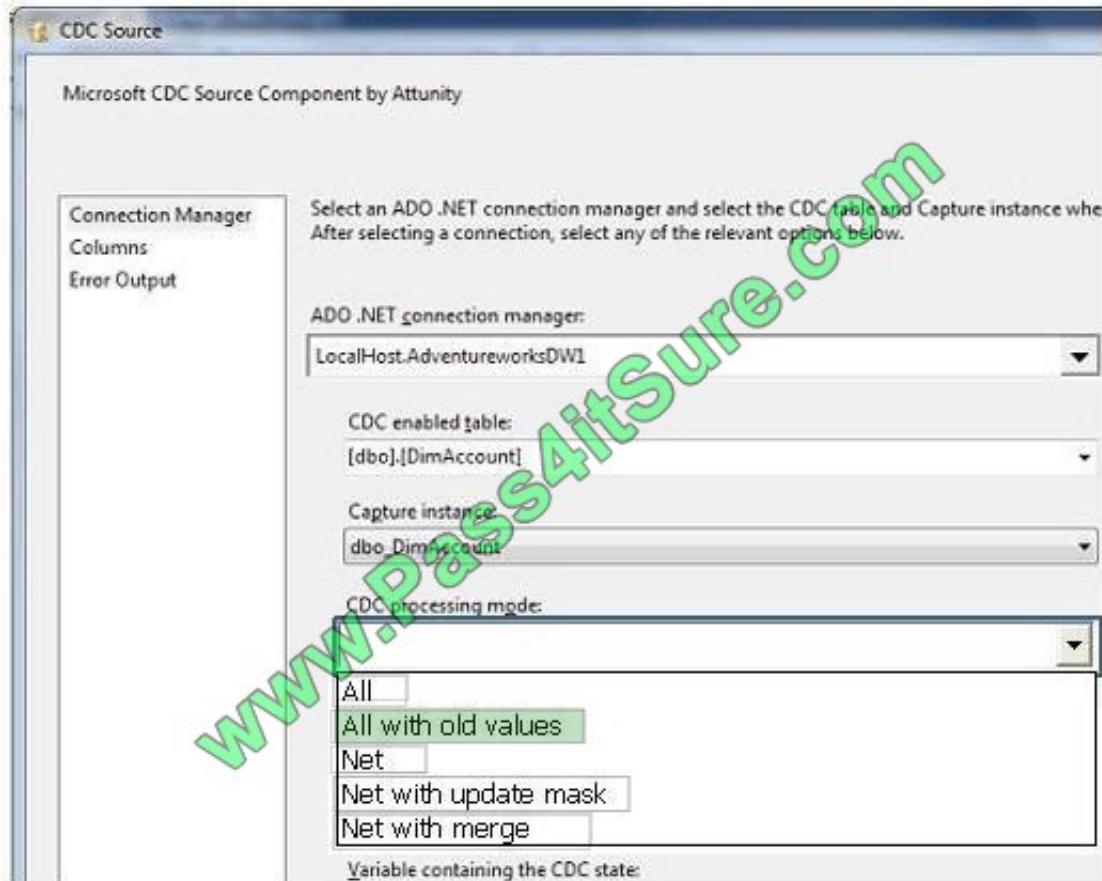
CDC enabled table:
[dbo].[DimAccount]

Capture instance:
dbo.DimAccount

CDC processing mode:
All
All with old values
Net
Net with update mask
Net with merge

Variable containing the CDC state:

Correct Answer:



QUESTION 4

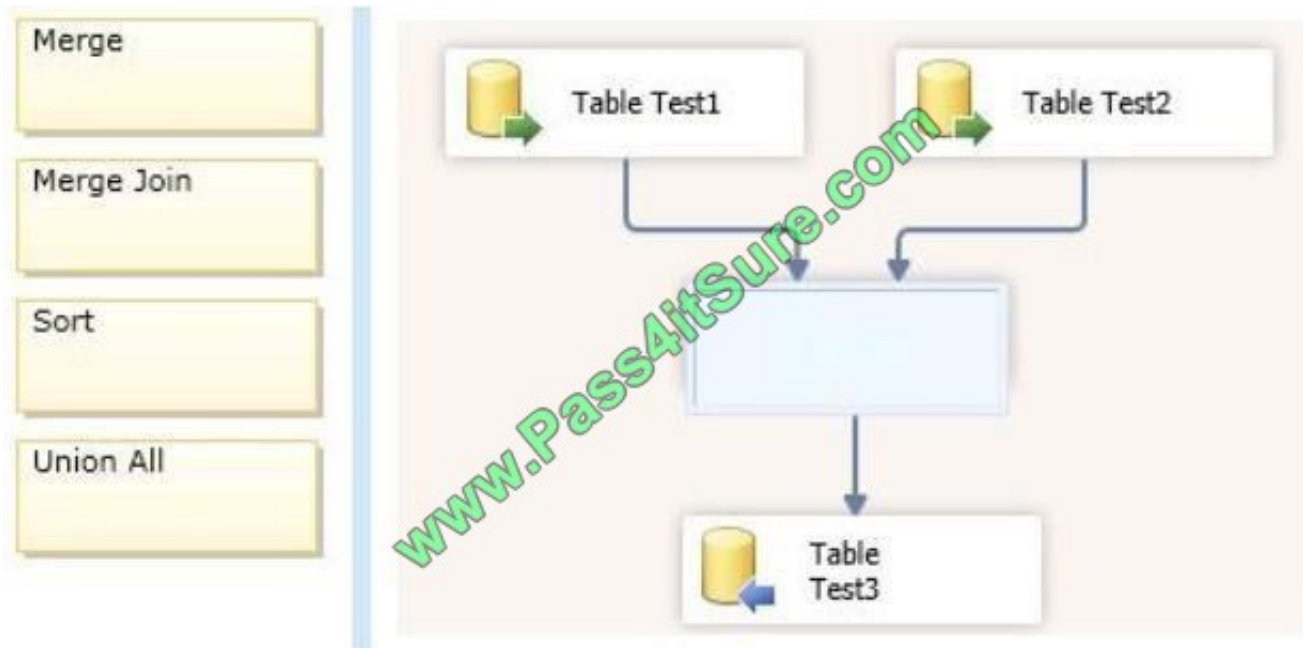
You are developing a SQL Server Integration Services (SSIS) package that loads data into a data warehouse hosted on Windows Azure SQL Database.

You must combine two data sources together by using the ProductID column to provide complete details for each record. The data retrieved from each data source is sorted in ascending order by the ProductID column.

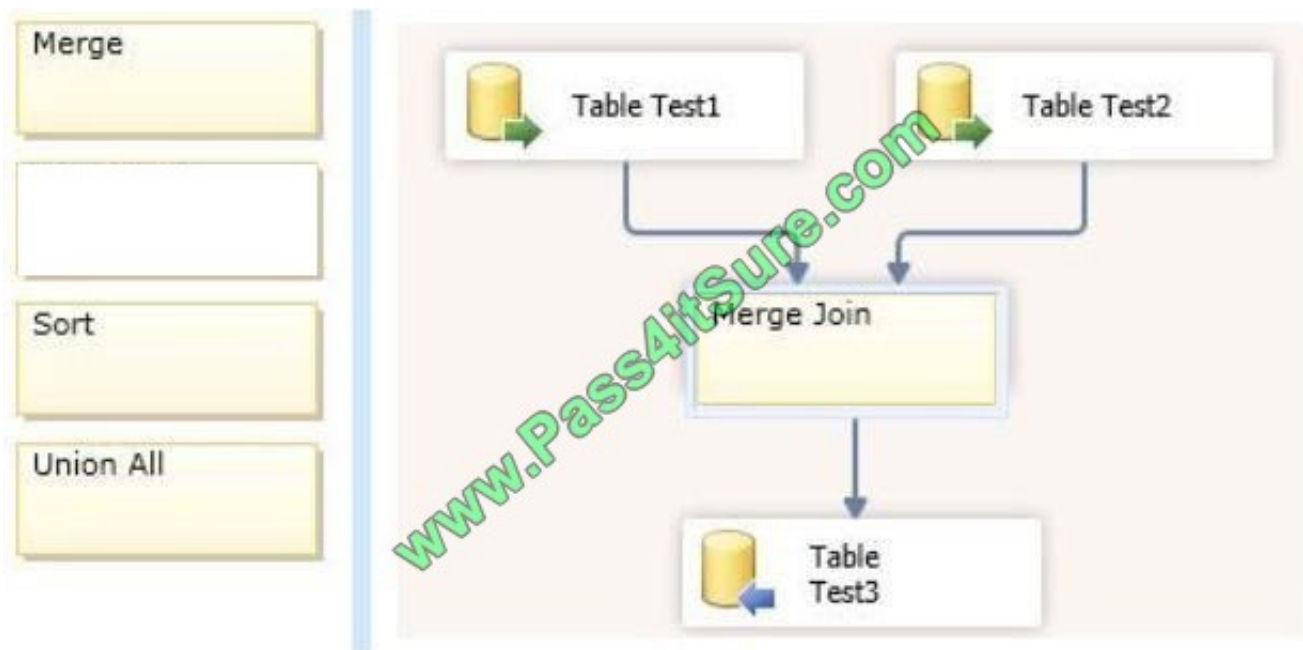
You need to develop a data flow that imports the data while meeting the requirements.

How should you develop the data flow? (To answer, drag the appropriate transformation from the list of transformations to the correct location in the answer area.)

Select and Place:



Correct Answer:



QUESTION 5

You administer a Microsoft SQL Server 2012 instance that contains a financial database hosted on a storage area network (SAN). The financial database has the following characteristics:

A data file of 2 terabytes is located on a dedicated LUN (drive D).



A transaction log of 10 GB is located on a dedicated LUN (drive E).

Drive D has 1 terabyte of free disk space.

Drive E has S GB of free disk space.

The database is continually modified by users during business hours from Monday through Friday between 09:00 hours and 17:00 hours. Five percent of the existing data is modified each day.

The Finance department loads large CSV files into a number of tables each business day at 11:15 hours and 15:15 hours by using the BCP or BULK INSERT commands. Each data load adds 3 GB of data to the database.

These data load operations must occur in the minimum amount of time.

A full database backup is performed every Sunday at 10:00 hours. Backup operations will be performed every two hours (11:00, 13:00, 15:00, and 17:00) during business hours.

You implement log shipping of the financial database to another SQL Server 2012 instance. You decide to failover to this secondary database.

You need to ensure that all transactions will be replicated to the secondary database.

A.

Differential

B.

Transaction log

C.

FULL

D.

SIMPLE

E.

BULK_LOGGED

F.

SKIP

G.

RESTART

H.

STANDBY

I.

CHECKSUM



J.

DBO_ONLY

K.

COPY_ONLY

L.

NORECOVERY

M.

NO_CHECKSUM

N.

CONTINUE_AFTER_ERROR

Correct Answer: L

[Latest 70-458 Dumps](#)

[70-458 Practice Test](#)

[70-458 Study Guide](#)



To Read the [Whole Q&As](#), please purchase the [Complete Version](#) from [Our website](#).

Try our product !

100% Guaranteed Success

100% Money Back Guarantee

365 Days Free Update

Instant Download After Purchase

24x7 Customer Support

Average 99.9% Success Rate

More than 800,000 Satisfied Customers Worldwide

Multi-Platform capabilities - [Windows](#), [Mac](#), [Android](#), [iPhone](#), [iPod](#), [iPad](#), [Kindle](#)

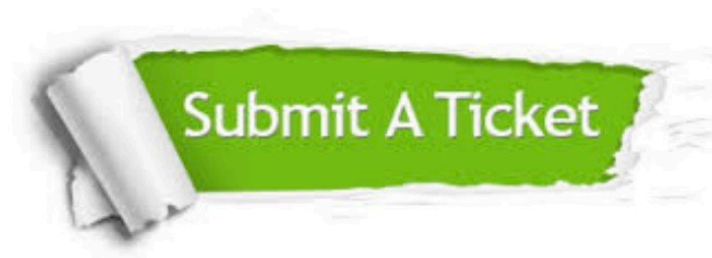
We provide exam PDF and VCE of Cisco, Microsoft, IBM, CompTIA, Oracle and other IT Certifications. You can view Vendor list of All Certification Exams offered:

<https://www.pass4itsure.com/allproducts>

Need Help

Please provide as much detail as possible so we can best assist you.

To update a previously submitted ticket:



 One Year Free Update <p>Free update is available within One Year after your purchase. After One Year, you will get 50% discounts for updating. And we are proud to boast a 24/7 efficient Customer Support system via Email.</p>	 Money Back Guarantee <p>To ensure that you are spending on quality products, we provide 100% money back guarantee for 30 days from the date of purchase.</p>	 Security & Privacy <p>We respect customer privacy. We use McAfee's security service to provide you with utmost security for your personal information & peace of mind.</p>
-----------------------------------------------------------------------------------------------------------------------------------------------------------------------------------------------------------------------------------------------------------------------------------------------------------------------------	---------------------------------------------------------------------------------------------------------------------------------------------------------------------------------------------------------------------------------------------------------	--------------------------------------------------------------------------------------------------------------------------------------------------------------------------------------------------------------------------------------------------------------------------------

Any charges made through this site will appear as Global Simulators Limited.

All trademarks are the property of their respective owners.

Copyright © pass4itsure, All Rights Reserved.