



70-448^{Q&As}

TS:MS SQL Server 2008.Business Intelligence Dev and Maintenanc

Pass Microsoft 70-448 Exam with 100% Guarantee

Free Download Real Questions & Answers **PDF** and **VCE** file from:

<https://www.pass4itsure.com/70-448.html>

100% Passing Guarantee
100% Money Back Assurance

Following Questions and Answers are all new published by Microsoft
Official Exam Center

-  **Instant Download** After Purchase
-  **100% Money Back** Guarantee
-  **365 Days** Free Update
-  **800,000+** Satisfied Customers



**QUESTION 1**

You are a database developer and you have about two years experience in creating business Intelligence (BI) by using SQL Server2008.

Now you are employed in a company named NaproStar which uses SQL Server2008, and you are in charge of a SQL Server 2008 Analysis Services (SSAS) database. A Duplicate Key error occurs when you process the Analysis Services

database.

As the technical support, you have to solve this problem. In order to make the error condition be reported and continue processing, the ErrorConfiguration property has to be modified.

So which object should be modified?

- A. The measure group should be modified
- B. The dimension should be modified
- C. The cube should be modified.
- D. The partition should be modified

Correct Answer: B

QUESTION 2

You develop a series of SQL Server 2008 Integration Services (SSIS) packages. You need to ensure that the following requirements are met:

The packages contain configurations.

The configuration information is centrally stored for all packages.

There are no dependencies among the packages.

Which component should you use to configure the package? (Each correct answer presents a complete solution. Choose two.)

- A.
A SQL Server 2008 table
- B.
A parent package variable
- C.
A registry entry
- D.



An environment variable

E.

An XML configuration file

Correct Answer: AE

Integration Services supports several different methods of storing package configurations, such as XML files, tables in a SQL Server database, and environment and package variables.

Each configuration is a property/value pair. The XML configuration file and SQL Server configuration types can include multiple configurations. The following table describes the package configuration types.

Type	Description
XML configuration file	An XML file contains the configurations. The XML file can include multiple configurations.
Environment variable	An environment variable contains the configuration.
Registry entry	A registry entry contains the configuration.
Parent package variable	A variable in the package contains the configuration. This configuration type is typically used to update properties in child packages.
SQL Server table	A table in a SQL Server database contains the configuration. The table can include multiple configurations.

If you select the XML configuration file configuration type, you can create a new configuration file, reuse an existing file and add new configurations, or reuse an existing file but overwrite existing file content. If you select the SQL Server configuration type, you specify the connection to the SQL Server database in which you want to store the configurations. You can save the configurations to an existing table or create a new table in the specified database. Note: SSIS (SQL Server Integration Services) is an upgrade of DTS (Data Transformation Services), which is a feature of the previous version of SQL Server. Integration Services provides a platform to build data integration and workflow applications. The primary use for SSIS is data warehousing as the product features a fast and flexible tool for data extraction, transformation, and loading (ETL). The tool may also be used to automate maintenance of SQL Server databases, update multidimensional cube data, and perform other functions.

QUESTION 3

You are a database developer and you have about two years experience in creating business intelligence (BI) solutions by using SQL Server 2008.

Now you are employed in a company which is named NaproStar and work as the technical support for the company which uses SQL Server 2008 Analysis Services (SSAS). To meet the business development, you create a (SSAS) solution

and enable proactive caching for a partition. Now you get an order from your company CIO, according to his requirement, while updating the multidimensional storage, you should make sure that you can use SSAS to query relational data.

What action below should be performed?

- A. To achieve this goal, the OnlineMode property for the partition should be set to OnCacheComplete
- B. To achieve this goal, the ProcessingMode property for the partition should be set to LazyAggregations.



C. To achieve this goal, the OnlineMode property for the partition should be set to Immediate.

D. To achieve this goal, the ProcessingMode property for the partition should be set to Regular

Correct Answer: C

ProcessingMode Defines the place in the cube processing at which data becomes available to users. By default, ProcessingMode is set to Regular, and users cannot access the measure group until processing is complete. If ProcessingMode is set to LazyAggregations, data is accessible as soon as it is processed, but processing takes longer.

QUESTION 4

You maintain a SQL Server 2008 Analysis Services (SSAS) database on a default instance.

You need to collect information to determine if performance issues are related to hardware limitations or latch wait contention.

Which three counters should you use? (To answer, select the three appropriate counters in the answer area.)

Hot Area:

Performance Counter Properties

Add Counters

Available counters

Select counters from computer:

<Local computer> Browse...

- MSAS 2008:Connection
- MSAS 2008:Threads
- MSAS 2008:Data Mining Prediction
- MSAS 2008:Locks
- MSAS 2008:MDX
- MSAS 2008:Memory

Instances of selected object:

- Total
- <All instances>
- 0
- 1
- 2
- 3

Search

Add >>

Added counters

Counter	Parent	Inst...	Computer
---------	--------	---------	----------

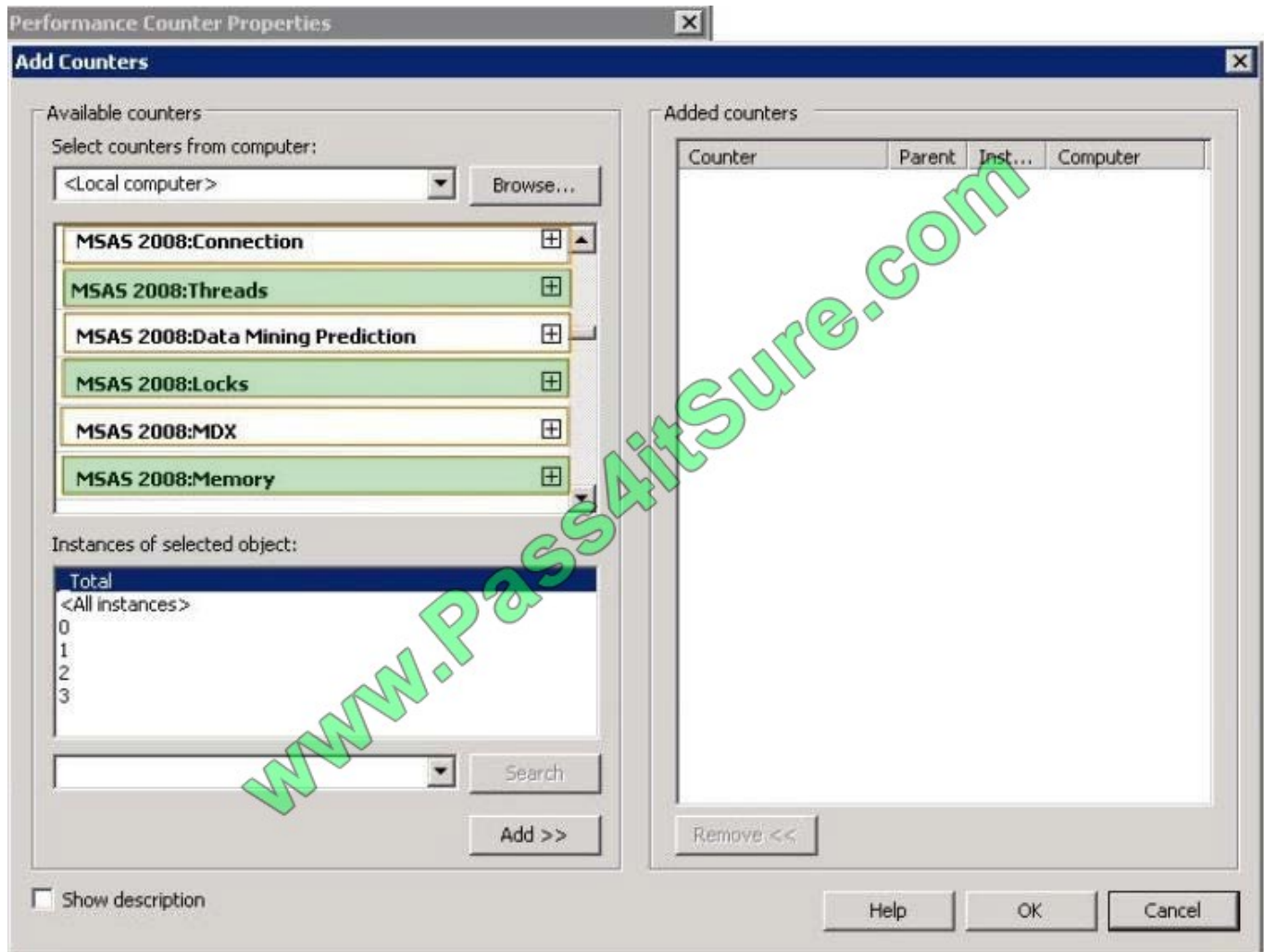
Remove <<

Show description

Help OK Cancel



Correct Answer:



QUESTION 5

You are a database developer and you have about two years experience in creating business intelligence (BI) solutions by using SQL Server2008.

Now you are employed in a company which is named NaproStar and work as the technical support for the company which uses SQL Server2008.

To meet the business development, you create a SQL Server 2008 Analysis Server (SSAS) solution with a measure group contained.

The measure group named Meatruth has a single partition. Now you are asked to not only make sure you have all aggregations that are part of the measure group stored in a multidimensional format, but also make sure the queries that use the measure group always refer to the newest edition of the source detail data. So what action should you perform to achieve that goal?

A. You should set the ProactiveCaching property of the partition to scheduled multidimensional online analytical processing (MOLAP).



- B. You should set the ProactiveCaching property of the partition to real-time multidimensional online analytical processing (MOLAP)
- C. You should set the ProactiveCaching property of the partition to real-time hybrid online analytical processing (HOLAP).
- D. You should set the ProactiveCaching property of the partition to real-time relational online analytical processing (ROLAP)
- E. You should set the ProactiveCaching property of the partition to automatic multidimensional online analytical processing (MOLAP).

Correct Answer: C

HYBRID OLAP As its name suggests, HOLAP is a hybrid between MOLAP and ROLAP. In HOLAP, the cube data remains in the relational store, but the aggregations are stored on the SSAS server. HOLAP is the most efficient mode in terms of disk space because detail-level data is not duplicated, as it is with MOLAP, and HOLAP requires less space to store aggregations than ROLAP does.

EXAM TIP Choose the HOLAP storage mode if you want to store cube aggregations on the SSAS server but keep the fact data in the source database. -----

In terms of query performance, HOLAP scores in the middle. If the query can be satisfied entirely by existing aggregations, HOLAP performs as well as MOLAP. But if it cannot be satisfied, the query is sent to the relational database, and performance suffers. In terms of processing times, HOLAP cubes might be processed faster than either MOLAP or ROLAP cubes because data is read only once to create aggregations. However, because SSAS has an efficient storage architecture, in real life MOLAP and HOLAP should give you comparable processing times, so it is best to consider HOLAP only for large historical partitions that are queried infrequently.

[70-448 VCE Dumps](#)

[70-448 Practice Test](#)

[70-448 Study Guide](#)



To Read the [Whole Q&As](#), please purchase the [Complete Version](#) from [Our website](#).

Try our product !

100% Guaranteed Success

100% Money Back Guarantee

365 Days Free Update

Instant Download After Purchase

24x7 Customer Support

Average 99.9% Success Rate

More than 800,000 Satisfied Customers Worldwide

Multi-Platform capabilities - [Windows](#), [Mac](#), [Android](#), [iPhone](#), [iPod](#), [iPad](#), [Kindle](#)

We provide exam PDF and VCE of Cisco, Microsoft, IBM, CompTIA, Oracle and other IT Certifications. You can view Vendor list of All Certification Exams offered:

<https://www.pass4itsure.com/allproducts>

Need Help

Please provide as much detail as possible so we can best assist you.

To update a previously submitted ticket:



 <p>One Year Free Update Free update is available within One Year after your purchase. After One Year, you will get 50% discounts for updating. And we are proud to boast a 24/7 efficient Customer Support system via Email.</p>	 <p>Money Back Guarantee To ensure that you are spending on quality products, we provide 100% money back guarantee for 30 days from the date of purchase.</p>	 <p>Security & Privacy We respect customer privacy. We use McAfee's security service to provide you with utmost security for your personal information & peace of mind.</p>
---	---	--

Any charges made through this site will appear as Global Simulators Limited.

All trademarks are the property of their respective owners.

Copyright © pass4itsure, All Rights Reserved.