



# 70-417<sup>Q&As</sup>

Upgrading Your Skills to MCSA Windows Server 2012

## Pass Microsoft 70-417 Exam with 100% Guarantee

Free Download Real Questions & Answers **PDF** and **VCE** file from:

<https://www.pass4itsure.com/70-417.html>

100% Passing Guarantee  
100% Money Back Assurance

Following Questions and Answers are all new published by Microsoft  
Official Exam Center

- ⚙ **Instant Download** After Purchase
- ⚙ **100% Money Back** Guarantee
- ⚙ **365 Days** Free Update
- ⚙ **800,000+** Satisfied Customers





### QUESTION 1

OCSetup is available as part of the Windows Vista and Windows Server 2008 operating system. This tool replaces Sysocmgr.exe, which is included in the Windows XP and Windows Server 2003 operating systems.

This new tool can be used to perform which one of the following operations?

- A. All of these
- B. Microsoft System Installer (MSI) files that are passed to the Windows Installer service (MSIExec.exe)
- C. Component-Based Servicing (CBS) components that are passed to Package Manager
- D. CBS or MSI packages that have an associated custom installer .exe file

Correct Answer: A

<http://technet.microsoft.com/en-us/library/dd799247%28v=ws.10%29.aspx> OCSetup Command-Line Options The WindowsOptional Component Setup (OCSetup.exe) tool is a command-line tool that can be used to add system components to an online Windows image. It installs or removes Component-Based Servicing (CBS) packages online by passing packages to the Deployment Image Servicing and Management (DISM) tool for installation or removal. OCSetup can also be used to install Microsoft System Installer (MSI) packages by calling the Windows Installer service (MSIExec.exe) and passing Windows Installer components to it for installation or removal. The MSI file must be signed by Microsoft to be able to be installed by using OCSetup. In addition, OCSetup can be used to install CBS or MSI system component packages that have associated custom installers (.exe files). The OCSetup tool is available as part of the Windows 7 and Windows Server 2008 R2 operating systems. You can use OCSetup.exe on a computer running Windows 7 or Windows Server 2008 R2.

### QUESTION 2

You have a server named Server1 that runs Windows Server 2012 R2.

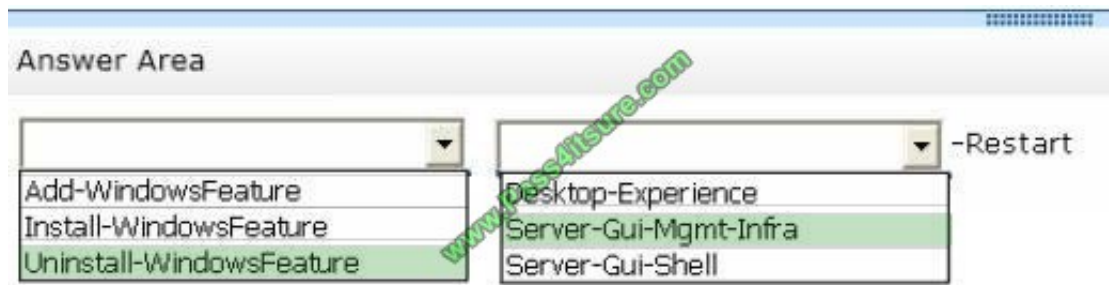
You need to switch Server1 to a Server Core installation of Windows Server 2012 R2.

What command should you run?

To answer, select the appropriate options in the answer area.

Hot Area:

Correct Answer:



### QUESTION 3

Your network contains an Active Directory domain named contoso.com. The domain contains an IP Address Management (IPAM) server that uses a Windows Internal Database.

You install a Microsoft SQL Server 2012 instance on a new server.

You need to migrate the IPAM database to the SQL Server instance.

Which cmdlet should you run?

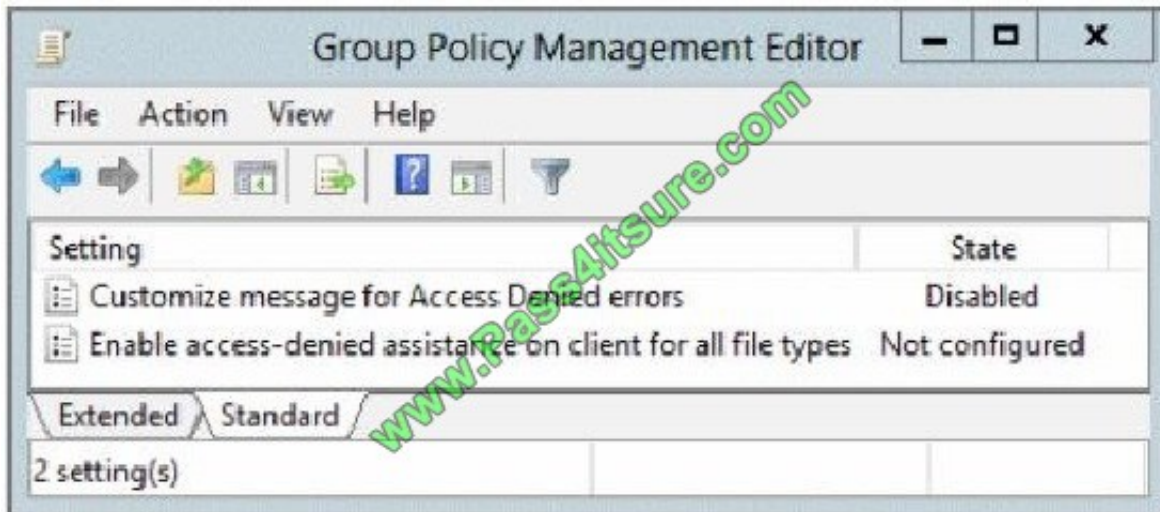
- A. Disable-IpamCapability
- B. Update-IpamServer
- C. Move-IpamDatabase
- D. Set-IpamConfiguration

Correct Answer: C

The Move-IpamDatabase cmdlet migrates the IP Address Management (IPAM) database to a Microsoft SQL Server database.

### QUESTION 4

Your network contains an Active Directory domain named contoso.com. The domain contains a file server named Server1. The File Server Resource Manager role service is installed on Server1. All servers run Windows Server 2012 R2. A Group Policy object (GPO) named GPO1 is linked to the organizational unit (OU) that contains Server1. The following graphic shows the configured settings in GPO1.



Server1 contains a folder named Folder1. Folder1 is shared as Share1.

You attempt to configure access-denied assistance on Server1, but the Enable access-denied assistance option cannot be selected from File Server Resource Manager.

You need to ensure that you can configure access-denied assistance on Server1 manually by using File Server Resource Manager.

What should you do?

- A. Set the Customize message for Access Denied errors policy setting to Enabled for GPO1.
- B. Set the Enable access-denied assistance on client for all file types policy setting to Disabled for GPO1.
- C. Set the Enable access-denied assistance on client for all file types policy setting to Enabled for GPO1.
- D. Set the Customize message for Access Denied errors policy setting to Not Configured for GPO1.

Correct Answer: D

Ensure that you can configure access-denied assistance

References: [http://technet.microsoft.com/en-us/library/hh831402.aspx#BKMK\\_1](http://technet.microsoft.com/en-us/library/hh831402.aspx#BKMK_1)

## QUESTION 5

### DRAG DROP

Your network contains an Active Directory domain named contoso.com.

You deploy a web-based application named App1 to a server named Server1. App1 uses an application pool named AppPool1. AppPool1 uses a domain user account named User1 as its identity. You need to configure Kerberos constrained

delegation for User1.

Which three actions should you perform? To answer, move the three appropriate actions from the list of actions to the



answer area and arrange them in the correct order.

Select and Place:

| Actions  | Answer Area |
|--|-------------|
| Run setspn.exe and specify the -l parameter.   |             |
| From the properties of User1, open the Delegation tab, and add the HOST service.   |             |
| From the properties of User1, open the Delegation tab, and select Trust this user for delegation to any service (Kerberos only). |             |
| From the properties of User1, open the Delegation tab, and select Trust this user for delegation to specified services only.     |             |
| Run setspn.exe and specify the -s parameter.   |             |

Correct Answer:



| Actions  | Answer Area  |
|--|--|
|  | Run setspn.exe and specify the -l parameter.   |
| From the properties of User1, open the Delegation tab, and add the HOST service.   | Run setspn.exe and specify the -s parameter.   |
| From the properties of User1, open the Delegation tab, and select Trust this user for delegation to any service (Kerberos only). | From the properties of User1, open the Delegation tab, and select Trust this user for delegation to specified services only. |
|  |  |
|  |  |

References: <https://support.microsoft.com/en-us/kb/929650>

[70-417 PDF Dumps](#)

[70-417 VCE Dumps](#)

[70-417 Braindumps](#)





To Read the [Whole Q&As](#), please purchase the [Complete Version](#) from [Our website](#).

## Try our product !

100% Guaranteed Success

100% Money Back Guarantee

365 Days Free Update

Instant Download After Purchase

24x7 Customer Support

Average 99.9% Success Rate

More than 800,000 Satisfied Customers Worldwide

Multi-Platform capabilities - [Windows](#), [Mac](#), [Android](#), [iPhone](#), [iPod](#), [iPad](#), [Kindle](#)

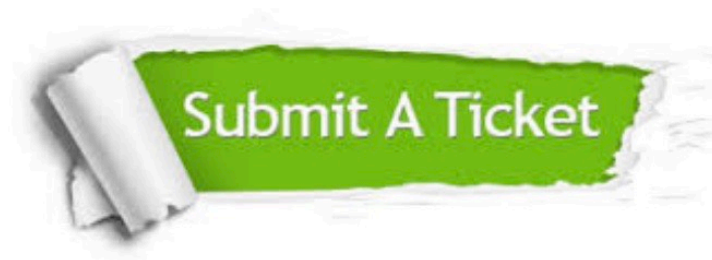
We provide exam PDF and VCE of Cisco, Microsoft, IBM, CompTIA, Oracle and other IT Certifications. You can view Vendor list of All Certification Exams offered:

<https://www.pass4itsure.com/allproducts>

## Need Help

Please provide as much detail as possible so we can best assist you.

To update a previously submitted ticket:



|   |   |  |
|---|---|--|
|  <b>One Year Free Update</b> <p>Free update is available within One Year after your purchase. After One Year, you will get 50% discounts for updating. And we are proud to boast a 24/7 efficient Customer Support system via Email.</p> |  <b>Money Back Guarantee</b> <p>To ensure that you are spending on quality products, we provide 100% money back guarantee for 30 days from the date of purchase.</p> |  <b>Security &amp; Privacy</b> <p>We respect customer privacy. We use McAfee's security service to provide you with utmost security for your personal information &amp; peace of mind.</p> |
|---|---|--|

Any charges made through this site will appear as Global Simulators Limited.

All trademarks are the property of their respective owners.

Copyright © pass4itsure, All Rights Reserved.