



# 70-410<sup>Q&As</sup>

Installing and Configuring Windows Server 2012

## Pass Microsoft 70-410 Exam with 100% Guarantee

Free Download Real Questions & Answers **PDF** and **VCE** file from:

<https://www.pass4itsure.com/70-410.html>

100% Passing Guarantee  
100% Money Back Assurance

Following Questions and Answers are all new published by Microsoft  
Official Exam Center

-  **Instant Download** After Purchase
-  **100% Money Back** Guarantee
-  **365 Days** Free Update
-  **800,000+** Satisfied Customers





**QUESTION 1**

You have a print server named Server1. Server1 runs Windows Server 2008 R2. You have a file server named Server2. Server2 runs Windows Server 2012 R2. You need to migrate all of the printers on Server1 to Server2. Which actions should you perform on the servers?

Select and Place:

Actions

- Run **smigdeploy.exe.**
- Run **printbrm.exe -p all:org.**
- Install the Print and Document Services feature.
- Install the Windows Server Migration Tools feature.
- From the Print Management console, import the printers.
- From the Print Management console, export the printers.

Answer Area

Server1

Action

Server2

Action

Action

Correct Answer:

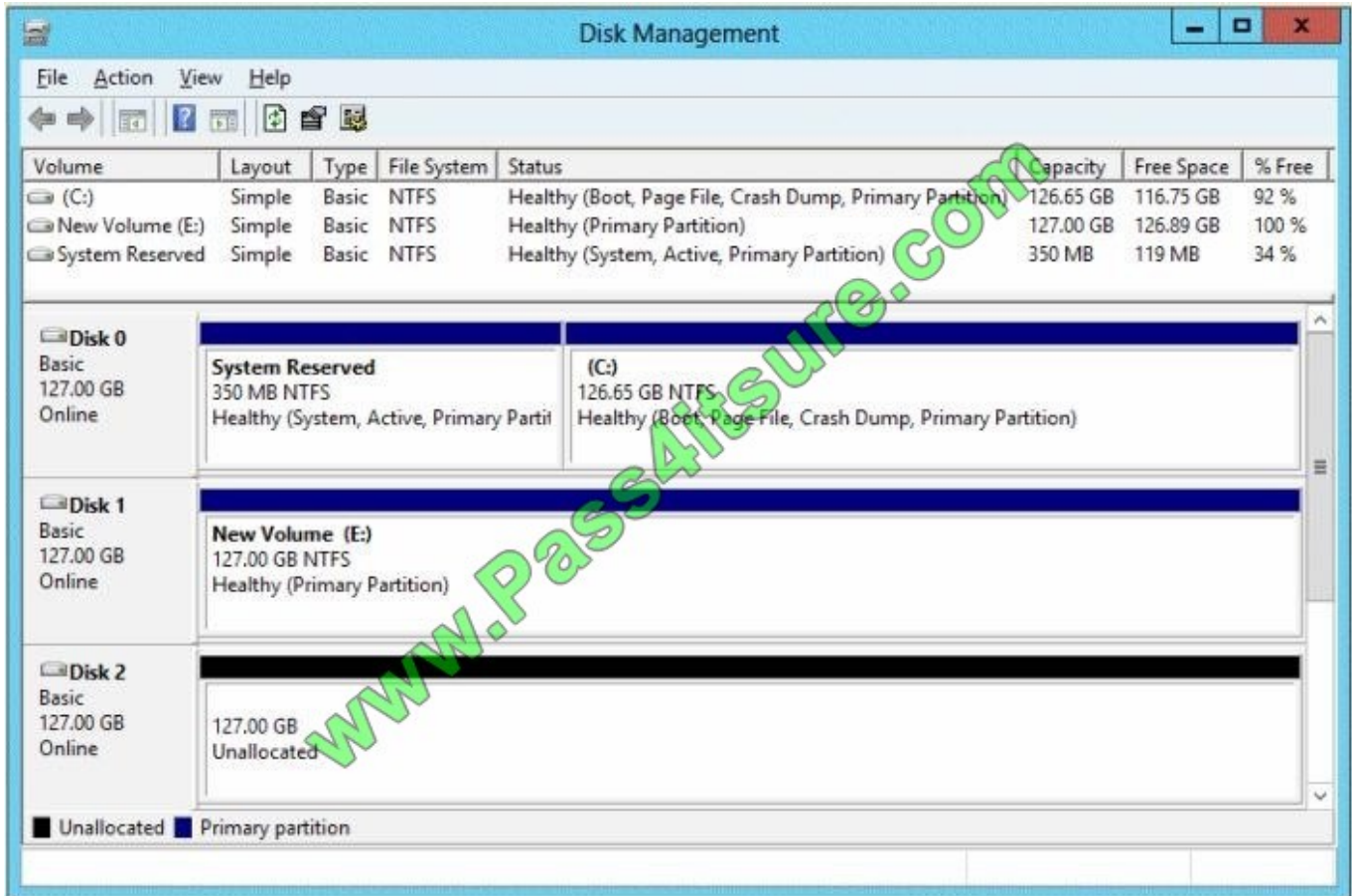


Actions	Answer Area
Run <b>smigdeploy.exe</b> .	Server1 From the Print Management console, export the printers.
Run <b>printbrm.exe -p all:org</b> .	Server2 Install the Print and Document Services feature.
Install the Windows Server Migration Tools feature.	From the Print Management console, import the printers.

**QUESTION 2**

You have a server that runs Windows Server 2012 R2.

The disks on the server are configured as shown in the exhibit. (Click the Exhibit button.)



You need to create a storage pool that contains Disk 1 and Disk 2. What should you do first?

- A. Delete volume E
- B. Convert Disk 1 and Disk 2 to dynamic disks
- C. Convert Disk 1 and Disk 2 to GPT disks
- D. Create a volume on Disk 2

Correct Answer: A

- A. Storage Pools use unallocated space

There is no way to create a storage pool with existing data. Storage pools are only a collection of drives that are managed by windows.

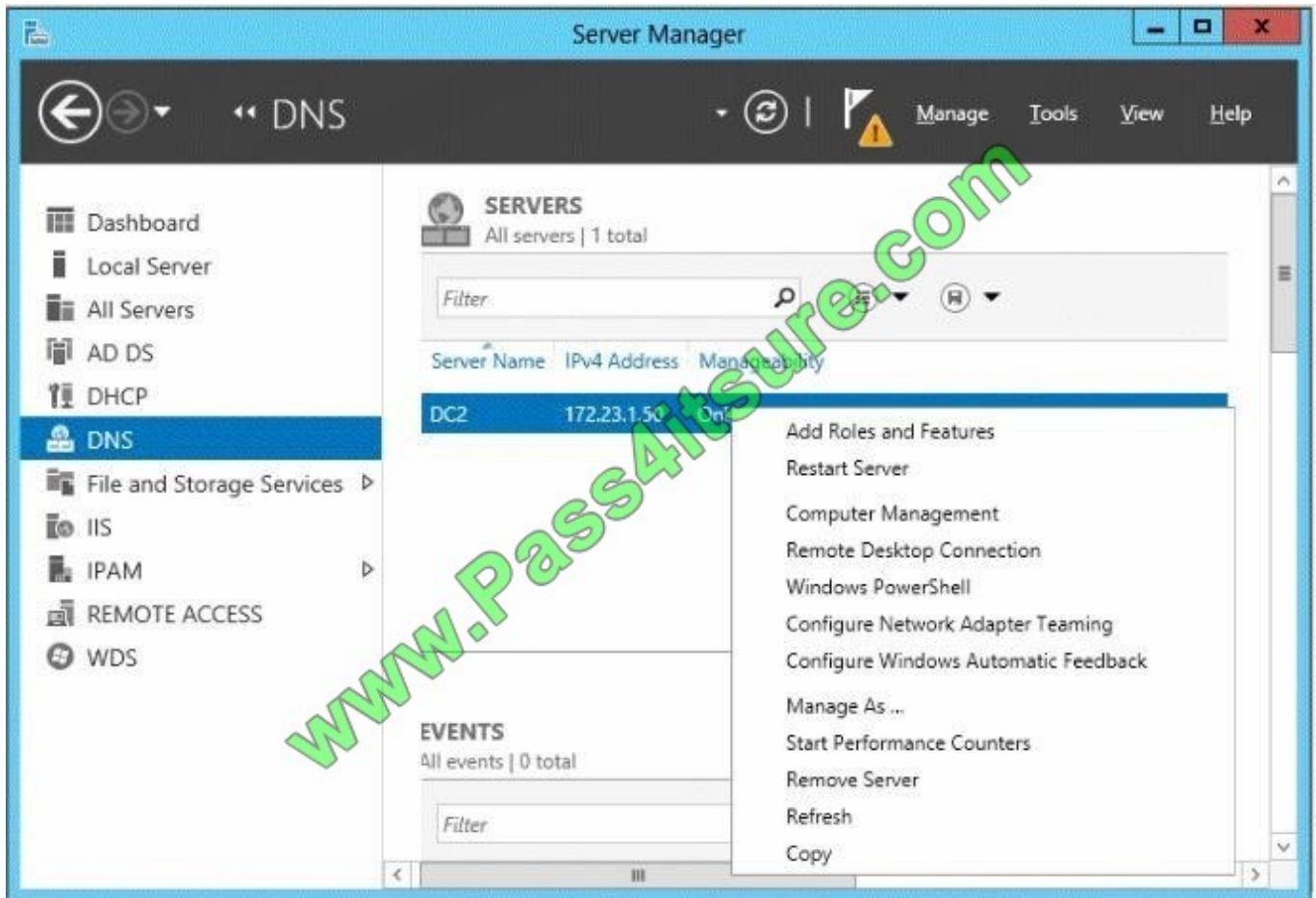
### QUESTION 3

Your network contains an Active Directory domain named contoso.com. The domain contains a member server named Server1 and a domain controller named DC2.All servers run Windows Server 2012 R2. All domain controllers are configured as DNS servers.

On Server1, you open Server Manager and you add DC2 as another server to manage.



From Server Manager on Server1, you right-click DC2 as shown in the exhibit. (Click the Exhibit button.)



You need to ensure that when you right-click DC2, you see the option to run DNS Manager. What should you do?

- A. On Server1, install the Role Administration Tools.
- B. In the domain, add Server1 to the DNS Admins group.
- C. On DC2 and Server1, run winrmquickconfig.
- D. On DC2, install the Feature Administration Tools.

Correct Answer: A

The Domain Name System (DNS) role is a role that provides a standard method for associating names with numeric Internet addresses. This lets users refer to network computers by using easy-to-remember names instead of a long series of numbers. Windows DNS services can be integrated with DHCP services, eliminating the need to add DNS records as computers are added to the network.

#### QUESTION 4

A company has a forest with 4 sites. Subnets are as follows:

Main Office 172.16.1.0 Subnet: 255.255.255.0 Gateway 172.16.1.254



Site1 192.168.12.0 Subnet: 255.255.255.0

Site 2 192.168.13.0 Subnet: 255.255.255.0

Site 3 192.168.14.0 Subnet: 255.255.255.0

Site 4 192.168.15.0 Subnet: 255.255.255.0

You add a new server to the Main Office and it needs to be able to communicate to all sites. Which route command would you run?

- A. route add -p 192.168.8.0 netmask 255.255.252.0 172.16.1.254
- B. route add -p 192.168.0.0 netmask 255.255.248.0 172.16.1.254
- C. route add -p 192.168.12.0 netmask 255.255.252.0 172.16.1.254
- D. route add -p 192.168.12.0 netmask 255.255.240.0 172.16.1.254

Correct Answer: C

---

#### QUESTION 5

Your network contains an Active Directory domain named contoso.com. The domain contains a user account named User1 that resides in an organizational unit (OU) named OU1.

A Group Policy object (GPO) named GPO1 is linked to OU1. GPO1 is used to publish several applications to a user named User1.

In the Users container, you create a new user named User2.

You need to ensure that the same applications are published to User2.

What should you do?

- A. Modify the settings in GPO1.
- B. Move User2 to OU1
- C. Link a WMI filter to GPO1.
- D. Modify the security of GPO1.

Correct Answer: B

Moving User2 to OU1 will give him the same access as User1.

The GPO is linked to OU1. By moving User2 to OU1 the GPO will be applied to this user.



To Read the [Whole Q&As](#), please purchase the [Complete Version](#) from [Our website](#).

## Try our product !

100% Guaranteed Success

100% Money Back Guarantee

365 Days Free Update

Instant Download After Purchase

24x7 Customer Support

Average 99.9% Success Rate

More than 800,000 Satisfied Customers Worldwide

Multi-Platform capabilities - [Windows](#), [Mac](#), [Android](#), [iPhone](#), [iPod](#), [iPad](#), [Kindle](#)

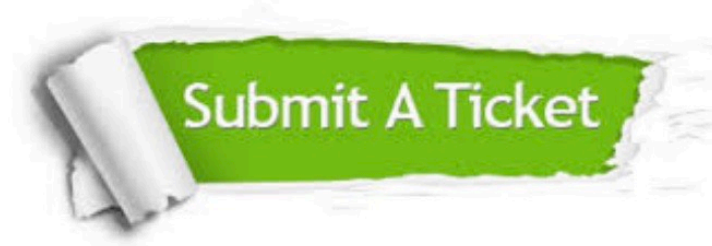
We provide exam PDF and VCE of Cisco, Microsoft, IBM, CompTIA, Oracle and other IT Certifications. You can view Vendor list of All Certification Exams offered:

<https://www.pass4itsure.com/allproducts>

## Need Help

Please provide as much detail as possible so we can best assist you.

To update a previously submitted ticket:



 <p><b>One Year Free Update</b> Free update is available within One Year after your purchase. After One Year, you will get 50% discounts for updating. And we are proud to boast a 24/7 efficient Customer Support system via Email.</p>	 <p><b>Money Back Guarantee</b> To ensure that you are spending on quality products, we provide 100% money back guarantee for 30 days from the date of purchase.</p>	 <p><b>Security &amp; Privacy</b> We respect customer privacy. We use McAfee's security service to provide you with utmost security for your personal information &amp; peace of mind.</p>
---	---	--

Any charges made through this site will appear as Global Simulators Limited.

All trademarks are the property of their respective owners.

Copyright © pass4itsure, All Rights Reserved.