



# 70-345<sup>Q&As</sup>

Designing and Deploying Microsoft Exchange Server 2016

## Pass Microsoft 70-345 Exam with 100% Guarantee

Free Download Real Questions & Answers **PDF** and **VCE** file from:

<https://www.pass4itsure.com/70-345.html>

100% Passing Guarantee  
100% Money Back Assurance

Following Questions and Answers are all new published by Microsoft  
Official Exam Center

- ⚙ **Instant Download** After Purchase
- ⚙ **100% Money Back** Guarantee
- ⚙ **365 Days** Free Update
- ⚙ **800,000+** Satisfied Customers



**QUESTION 1**

Hotspot Question

A company named Contoso, Ltd. deploys Exchange Server 2016.

Contoso plans to establish a hybrid deployment between Exchange Server and a new Microsoft Office 365 tenant.

You need to identify which relative URL paths in the on-premises environment will be accessed by the Office 365 tenant.

What should you identify? To answer, select the appropriate options in the answer area

Hot Area:

**Answer Area**

MailTips:

<input type="checkbox"/>	/autodiscover/autodiscover.svc
<input type="checkbox"/>	/ews/exchange.asmx/wssecurity
<input type="checkbox"/>	/ews/mrsproxy.svc

Mailbox migrations:

<input type="checkbox"/>	/autodiscover/autodiscover.svc
<input type="checkbox"/>	/ews/exchange.asmx/wssecurity
<input type="checkbox"/>	/ews/mrsproxy.svc

Correct Answer:

**Answer Area**

MailTips:

<input type="checkbox"/>	/autodiscover/autodiscover.svc
<input checked="" type="checkbox"/>	/ews/exchange.asmx/wssecurity
<input type="checkbox"/>	/ews/mrsproxy.svc

Mailbox migrations:

<input type="checkbox"/>	/autodiscover/autodiscover.svc
<input checked="" type="checkbox"/>	/ews/exchange.asmx/wssecurity
<input type="checkbox"/>	/ews/mrsproxy.svc



## QUESTION 2

You have an Exchange Server 2016 organization. The organization contains an Edge Transport server.

Users report that a message with the following anti-spam headers is delivered to their Inbox folder in Microsoft Outlook.

X-MS-Exchange-Organization-PCL:7

X-MS-Exchange-Organization-SCL:6

X-MS-Exchange-Organization-Antispam-Report: DV: 3.1.3924.1409; SID: SenderIDStatus Fail; PCL: PhishingLevel SUSPICIOUS; CW: CustomList; PP: Presolved; TIME: TimeBasedFeatures

You need to prevent similar messages from being delivered. The solution must generate a non-delivery report (NDR) when the messages are prevented from being delivered to all user mailboxes.

What should you do??

- A. Set the SCL reject threshold to 7.
- B. Run the Set-SenderIdConfig cmdlet.
- C. Set the SCL delete threshold to 7.
- D. Run the Set-TransportConfig cmdlet.
- E. Set the SCL delete threshold to 5.
- F. Run the Set-RecipientFilterConfig cmdlet.
- G. Run the Set-Mailbox cmdlet.

Correct Answer: B

The SenderIDStatus is `Fail`. However, the email was still delivered due.

Use the Set-SenderIdConfig cmdlet to modify the configuration of the Sender ID agent. The SpoofedDomainAction parameter specifies the action that the Sender ID agent takes on the message when the sender domain shows evidence of

being spoofed. The SpoofedDomainAction parameter takes the following values: StampStatus, Reject or Delete. The default value is StampStatus.

We need to change the value of the SpoofedDomainAction parameter to Delete.

References:

<https://docs.microsoft.com/en-us/powershell/module/exchange/antispam-antimalware/set-senderidconfig?view=exchange-ps>

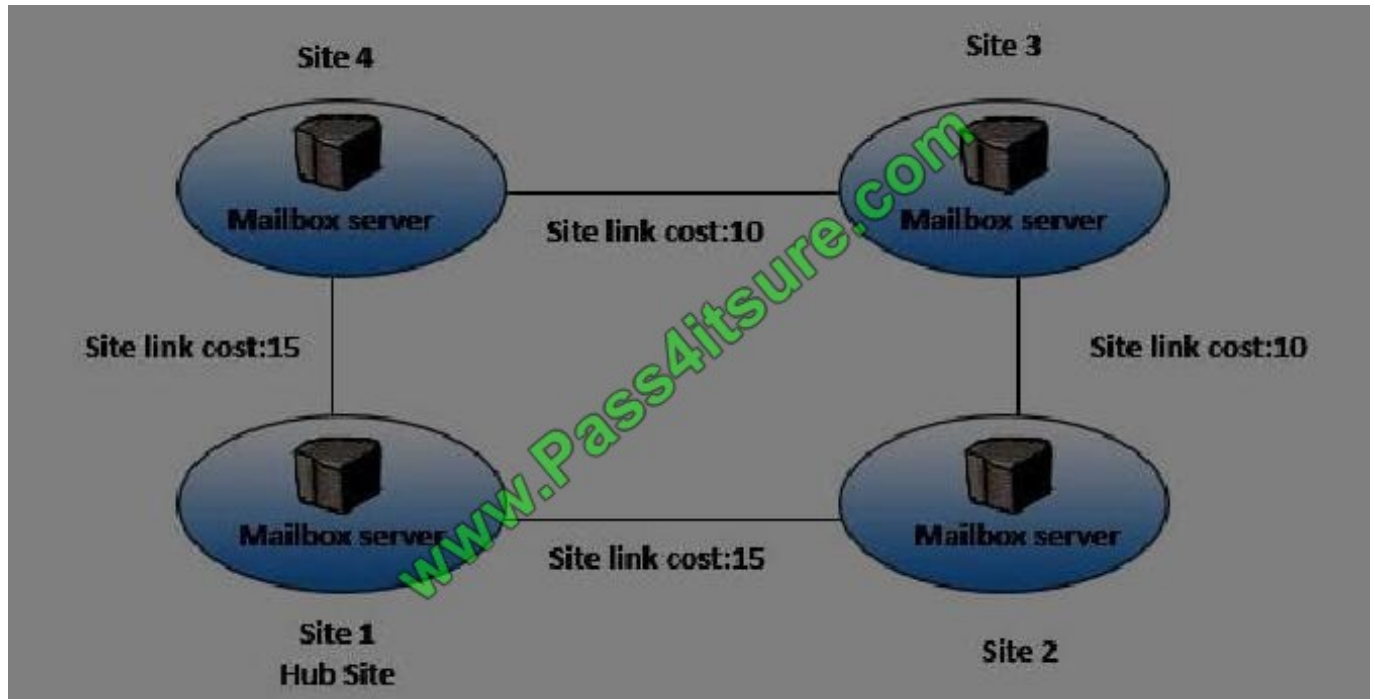
---

## QUESTION 3



## HOTSPOT

You have an Exchange Server 2016 organization. The Active directory sites are configured as shown in the following graphic.



Use the drop-down menus to select the answer choice that completes each statement based on the information presented in the graphic.

Hot Area:

When a user from Site 4 sends an email message to user in Site 2, the message will be [answer choice].

If the server in Site 2 fails, all of the email messages sent from Site 4 to Site 2 will be queued on a server in [answer choice].

Drop-down menu 1 options: sent directly to Site 2, relayed through Site 1, relayed through Site 3.

Drop-down menu 2 options: Site 1, Site 3, Site 4.

Correct Answer:

When a user from Site 4 sends an email message to user in Site 2, the message will be [answer choice].

If the server in Site 2 fails, all of the email messages sent from Site 4 to Site 2 will be queued on a server in [answer choice].

Drop-down menu 1 options: sent directly to Site 2, relayed through Site 1, relayed through Site 3.

Drop-down menu 2 options: Site 1, Site 3, Site 4.

**QUESTION 4**

Your company has three offices. The offices are located in New York, London and Sydney. The offices connect to each other by using a WAN link. Each office connects directly to the Internet. The company has an Exchange Server 2016 organization. The organization contains six Mailbox servers. The servers are configured as shown in the following table.

Server name	Office	Active Directory site	Database Availability group
EX1	New York	Site1	DAG1
EX2	New York	Site1	DAG1
EX3	London	Site2	DAG1
EX4	London	Site2	DAG1
EX5	Sydney	Site3	DAG1
EX6	Sydney	Site3	DAG1

Each office is configured to use a different Send connector to send email messages to the Internet.

You need to ensure that the servers route email messages that have Internet recipients through their respective site only.

What should you modify?

- A. the permissions of each Send connector
- B. the settings of the site links
- C. the cost of each Send connector
- D. the scope of each Send connector

Correct Answer: D

References: [https://msdn.microsoft.com/en-us/library/aa998662\(v=exchg.160\).aspx?f=255&MSPPErr=-2147217396](https://msdn.microsoft.com/en-us/library/aa998662(v=exchg.160).aspx?f=255&MSPPErr=-2147217396)

**QUESTION 5**

You run the Get-SendConnector cmdlet and you receive the following output.





```
AddressSpaces           : {SMTP:*;1}
AuthenticationCredential : 
CloudServicesMailEnabled : False
Comment                 : 
ConnectedDomains        : {}
ConnectionInactivityTimeout : 00:10:00
ConnectorType           : Default
DNSRoutingEnabled       : True
DomainSecureEnabled     : False
Enabled                 : True
ErrorPolicies           : Default
ForceHELO               : False
Fqdn                    : smtp.contoso.com
FrontendProxyEnabled     : False
HomeMTA                 : Microsoft MTA
HomeMTAServerID         : EX01
Identity                : Internet Mail
IgnoreSTARTTLS          : False
IsScopedConnector       : False
IsSmtplibConnector      : True
MaxMessageSize          : 35 MB (36,700,160, bytes)
Name                    : Internet Mail
Port                    : 25
```

```
ProtocolLoggingLevel    : None
RequireOrg               : False
RequireTLS               : False
SmartHostAuthMechanism  : None
SmartHosts              : {}
SmartHostsString        : 
SmtpMaxMessagesPerConnection : 20
SourceIPAddress          : 0.0.0.0
SourceRoutingGroup      : Exchange Routing Group (DWBGZMFD01QNBJR)
SourceTransportServers   : {EX01, EX02}
TlsAuthLevel            : 
TlsCertificateName       : 
TlsDomain               : 
UseExternalDNSServerEnabled : False
```

You need to recommend which actions are required to secure email connectivity between the contoso.com SMTP domain and the fabrikam.com SMTP domain. Which two actions should you recommend? Each correct answer presents part of the solution.

- A. Import a server certificate that has a subject name of ex01.contoso.com and a subject alternate name of ex02.contoso.com.
- B. Create an Outlook protection rule.
- C. Import a server certificate that has a subject name of smtp.contoso.com.
- D. Configure the `TLSSendDomainSecureListParameter` for the organization.
- E. Modify the `ConnectorType` parameter for the Send connector.



Correct Answer: CD

[Latest 70-345 Dumps](#)

[70-345 PDF Dumps](#)

[70-345 Practice Test](#)



To Read the [Whole Q&As](#), please purchase the [Complete Version](#) from [Our website](#).

## Try our product !

100% Guaranteed Success

100% Money Back Guarantee

365 Days Free Update

Instant Download After Purchase

24x7 Customer Support

Average 99.9% Success Rate

More than 800,000 Satisfied Customers Worldwide

Multi-Platform capabilities - [Windows](#), [Mac](#), [Android](#), [iPhone](#), [iPod](#), [iPad](#), [Kindle](#)

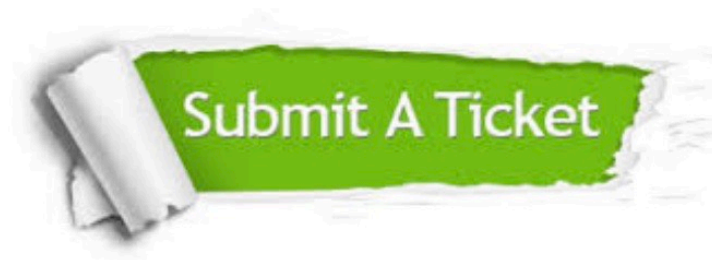
We provide exam PDF and VCE of Cisco, Microsoft, IBM, CompTIA, Oracle and other IT Certifications. You can view Vendor list of All Certification Exams offered:

<https://www.pass4itsure.com/allproducts>

## Need Help

Please provide as much detail as possible so we can best assist you.

To update a previously submitted ticket:



 <b>One Year Free Update</b> <p>Free update is available within One Year after your purchase. After One Year, you will get 50% discounts for updating. And we are proud to boast a 24/7 efficient Customer Support system via Email.</p>	 <b>Money Back Guarantee</b> <p>To ensure that you are spending on quality products, we provide 100% money back guarantee for 30 days from the date of purchase.</p>	 <b>Security &amp; Privacy</b> <p>We respect customer privacy. We use McAfee's security service to provide you with utmost security for your personal information &amp; peace of mind.</p>
---	---	--

Any charges made through this site will appear as Global Simulators Limited.

All trademarks are the property of their respective owners.

Copyright © pass4itsure, All Rights Reserved.