



70-341^{Q&As}

Core Solutions of Microsoft Exchange Server

Pass Microsoft 70-341 Exam with 100% Guarantee

Free Download Real Questions & Answers **PDF** and **VCE** file from:

<https://www.pass4itsure.com/70-341.html>

100% Passing Guarantee
100% Money Back Assurance

Following Questions and Answers are all new published by Microsoft
Official Exam Center

-  **Instant Download** After Purchase
-  **100% Money Back** Guarantee
-  **365 Days** Free Update
-  **800,000+** Satisfied Customers



**QUESTION 1**

You need to create and configure a hierarchical address book (HAB) named Litware to reflect the company's organizational chart.

Which three actions should you perform?

To answer, move the three appropriate actions from the list of actions to the answer area and arrange them in the correct order.

Select and Place:

| Actions | Answer Area |
|-------------------------------------------------------------------------------------------------------------------------------|-------------|
| Create an organizational unit (OU) named Litware. | |
| Run the Set-OrganizationConfig cmdlet and specify the <i>-hierarchicaladdressbookroot</i> parameter. | |
| Run the Set-Group cmdlet and specify the <i>-ishierarchicalgroup</i> parameter for each distribution group in the HAB. | |
| Create a root distribution group named Litware. | |
| Set the SeniorityIndex parameter of each distribution group in the HAB. | |

Correct Answer:



| Actions | Answer Area |
|--------------------------------------------------------------------------------|-------------------------------------------------------------------------------------------------------------------------------|
| Create an organizational unit (OU) named Litware. | Create a root distribution group named Litware. |
| | Run the Set-OrganizationConfig cmdlet and specify the <i>-hierarchicaladdressbookroot</i> parameter. |
| | Run the Set-Group cmdlet and specify the <i>-ishierarchicalgroup</i> parameter for each distribution group in the HAB. |
| | |
| | |
| Set the SeniorityIndex parameter of each distribution group in the HAB. | |

Note:

/ Example:

For this example, an OU called HAB will be created for the HAB. The name of the domain for the Exchange 2013 organization is Contoso-dom, and Contoso,Ltd will be the name of the top-level organization in the hierarchy (the root organization).

Create an OU named HAB in the Contoso organization. You can use Active Directory Users and Computers or type the following at a command prompt.

Alternatively, you can use an existing OU in your Exchange forest.

(Box 1) Create the root distribution group Contoso,Ltd for the HAB.

(Box 2) Designate Contoso,Ltd as the root organization for the HAB.

```
Set-OrganizationConfig -HierarchicalAddressBookRoot "Contoso,Ltd"
```

Create distribution groups for the other tiers in the HAB.

Designate each of the groups as members of the HAB. For this example, you would designate the following groups as being hierarchical groups: Contoso,Ltd, Corporate Office, Product Support Organization, Sales and Marketing Organization,



Human Resources, Accounting Group, and Administration Group. This example designates the distribution group Contoso,Ltd as a member of the HAB.

Set-Group -Identity "Contoso,Ltd" -IsHierarchicalGroup \$true

Add each of the subordinate groups as members of the root organization.

Add each of the groups that are subordinate to the distribution group Corporate Office as members of the group.

Add users to the groups in the HAB.

(Box 3) Set theSeniorityIndexparameter for groups in the HAB.

Set theSeniorityIndexparameter for users in the HAB groups.

Configuring hierarchical address books

The general steps are as follows:

(box 1, box 2) Create a distribution group that will be used for the root organization (top-level tier). If desired, you can use an existing organizational unit in your Exchange forest for the distribution group.

Create distribution groups for the child tiers and designate them as members of the HAB. (box 3)Modify the SeniorityIndex parameter of these groups so they're listed in the proper hierarchical order within the root organization.

Add organization members. Modify the SeniorityIndex parameter of the members so they're listed in the proper hierarchical order within the child tiers.

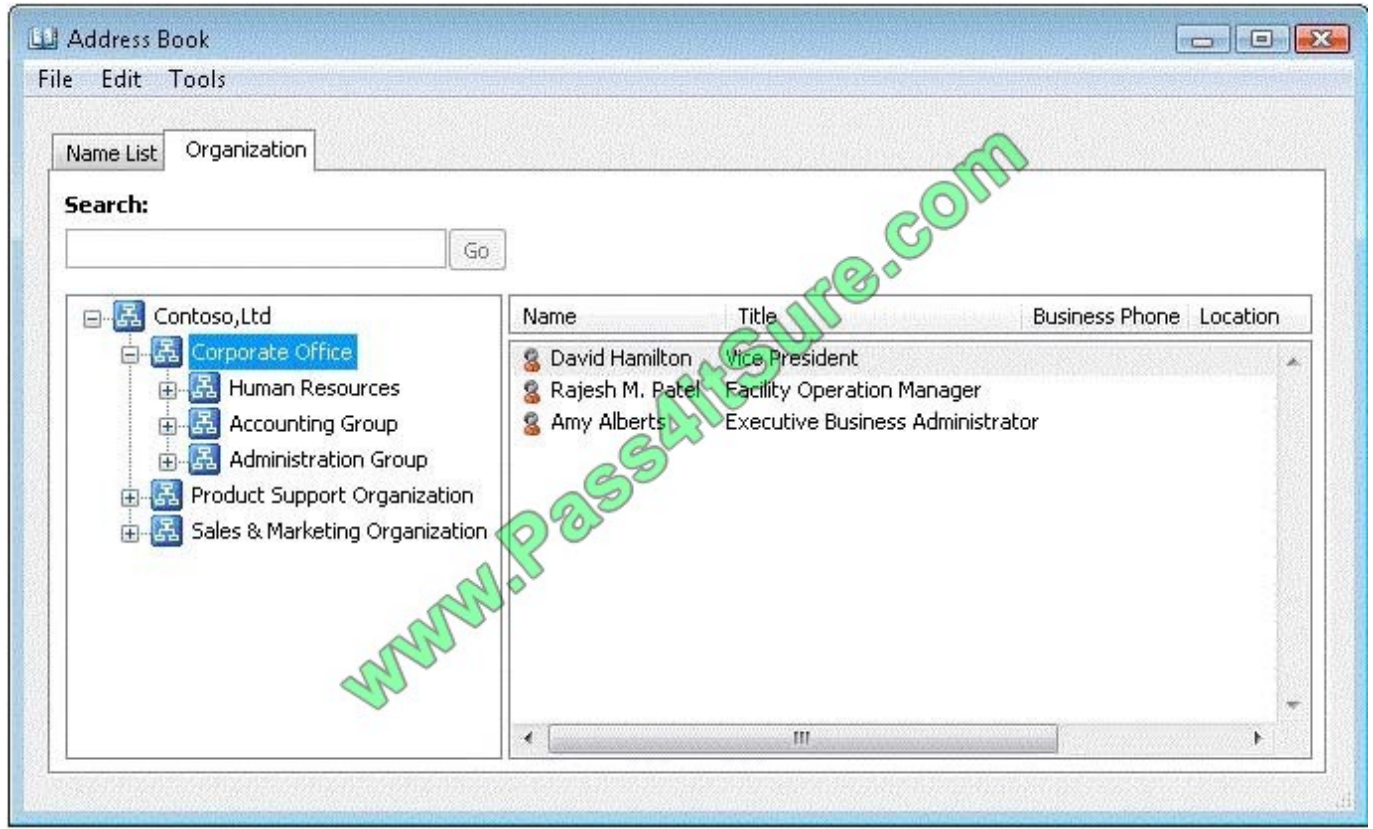
For accessibility purposes, you can use the PhoneticDisplayname parameter, which specifies a phonetic pronunciation of the DisplayName parameter.

Reference: Exchange 2013, Hierarchical Address Books

Exchange 2013, Enable or Disable Hierarchical Address Books

Set-OrganizationConfig: Exchange 2013 Help

Set-Group: Exchange 2013 Help



QUESTION 2

You need to configure the address books to meet the business goal for the finance department.

Which four cmdlets should you use?

- A. Set-MailUser, New-OfflineAddressBook, New-AddressBookPolicy, and New-GlobalAddressList
- B. Set-MailUser, New-OfflineAddressBook, New-GlobalAddressList, and New-AddressList
- C. Set-Mailbox, New-DistributionGroup, New-AddressBookPolicy, and New-AddressList
- D. Set-Mailbox, New-AddressBookPolicy, New-GlobalAddressList, and New-AddressList

Correct Answer: D

Set-Mailbox must be used to assign the Address Book Policy, therefore D is correct

[http://technet.microsoft.com/en-us/library/jj657455\(v=exchg.150\).aspx](http://technet.microsoft.com/en-us/library/jj657455(v=exchg.150).aspx)

Step 1: Install and configure the Address Book Policy Routing agent

Step 2: Divide your virtual organizations

Step 3: Create the address lists, GALs, and OABs

When you create the address lists and global address lists do not use "IncludedRecipient" and "ConditionalX" parameters, such as ConditionalCompany and ConditionalCustomAttribute5. You should use a recipient filter instead.



You must

use the Shell to create recipient filters. For more information about Recipient Filters, see [Recipient Filtering](#)

In creating the ABP, you will create multiple address lists based on how you want your users to view the address lists in Outlook or Outlook Web App. This organization has four address lists:

AL_FAB_Users_DGs

AL_FAB_Contacts

AL_TAIL_Users_DGs

AL_TAIL_Contacts

This example creates the address list AL_TAIL_Users_DGs. The address list contains all users and distribution groups where CustomAttribute15 equals TAIL.

```
New-AddressList -Name "AL_TAIL_Users_DGs" -RecipientFilter {((RecipientType -eq \\UserMailbox\\) -or  
(RecipientType -eq "MailUniversalDistributionGroup") -or (RecipientType -eq  
"DynamicDistributionGroup")) -and (CustomAttribute15 -eq "TAIL")}
```

For more information about creating address lists by using recipient filters, see [Create an Address List By Using Recipient Filters](#).

In order to create an ABP, you have to provide a room address list. If your organization doesn't have resource mailboxes such as room or equipment mailboxes, we suggest that you create a blank room address list. The following example

creates a blank room address list because there are no room mailboxes in the organization.

```
New-AddressList -Name AL_BlankRoom -RecipientFilter {(Alias -ne $null) -and ((RecipientDisplayType  
-eq \\ConferenceRoomMailbox\\) -or (RecipientDisplayType -eq \\SyncedConferenceRoomMailbox\\))}
```

However, in this scenario, Fabrikam and Contoso both have room mailboxes. This example creates room list for Fabrikam by using a recipient filter where CustomAttribute15 equals FAB.

```
New-AddressList -Name AL_FAB_Room -RecipientFilter {(Alias -ne $null) -and (CustomAttribute15 -eq  
"FAB")-and (RecipientDisplayType -eq \\ConferenceRoomMailbox\\) -or (RecipientDisplayType  
-eq \\SyncedConferenceRoomMailbox\\)}
```

The global address list used in an ABP must be a superset of the address lists. Do not create a GAL with fewer objects than exists in any or all of the address lists in the ABP. This example creates the global address list for Tailspin Toys that

includes all of the recipients that exists in the address lists and room address list.

```
New-GlobalAddressList -Name "GAL_TAIL" -RecipientFilter {(CustomAttribute15 -eq "TAIL")}
```

 For more information, see [Create a Global Address List](#).

When you create the OAB you should include the appropriate GAL when providing the AddressLists parameter of New- or Set-OfflineAddressBook to ensure no entry is unexpectedly missed. Basically, you can customize the set of entries



that

a user will see or reduce the download size of the OAB by specifying a list of AddressLists in AddressLists of New/Set-OfflineAddressBook. However, if you want users to see the full set of GAL entries in OAB, make sure that you include the

GAL in the AddressLists.

This example creates the OAB for Fabrikam named OAB_FAB.

```
New-OfflineAddressBook -Name "OAB_FAB" -AddressLists "GAL_FAB"
```

For more information, see [Create an Offline Address Book](#).

Step 4: Create the ABPs

After you've created all of the required objects you can then create the ABP. This example creates the ABP named ABP_TAIL.

```
New-AddressBookPolicy -Name "ABP_TAIL" -AddressLists "AL_TAIL_Users_DGs",
```

```
AL_TAIL_Contacts" -OfflineAddressBook "\OAB_TAIL" -GlobalAddressList "\GAL_TAIL" -RoomList
```

```
"\AL_TAIL_Rooms"
```

For more information, see [Create an Address Book Policy](#).

Step 5: Assign the ABPs to the mailboxes

Assigning the ABP to the user is the last step in the process. ABPs take effect when a user's application connects to the Microsoft Exchange Address Book service on the Client Access server. If the user is already connected to Outlook or

Outlook Web App when the ABP is applied to their account, they will need to close and restart the client application before they can see their new address lists and GAL.

This example assigns ABP_FAB to all mailboxes where CustomAttribute15 equals "FAB".

```
Get-Mailbox -resultsize unlimited | where {$_.CustomAttribute15 -eq "FAB"} | Set-Mailbox -
```

```
AddressBookPolicy "ABP_TAIL"
```

QUESTION 3

You need to recommend a solution to resolve the Autodiscover and the free/busy information issues.

Which command should you include in the recommendation? (To answer, configure the appropriate options in the answer area.)

Hot Area:



| Answer Area | |
|----------------------------------|-----------------------------------------------------------------------------------------------|
| <input type="text"/> | <input type="text" value="https://autodiscover.proseware.com/autodiscover/autodiscover.xml"/> |
| Set-AutodiscoverVirtualDirectory | -AutodiscoverServiceInternalURI |
| Set-AvailabiltyConfig | -External |
| Set-ClientAccessServer | -Internal |

Correct Answer:

| Answer Area | |
|----------------------------------|-----------------------------------------------------------------------------------------------|
| <input type="text"/> | <input type="text" value="https://autodiscover.proseware.com/autodiscover/autodiscover.xml"/> |
| Set-AutodiscoverVirtualDirectory | -AutodiscoverServiceInternalURI |
| Set-AvailabiltyConfig | -External |
| Set-ClientAccessServer | -Internal |

Free/busy information issues

Sharing free/busy (calendar availability) information between users located on-premises and in the Exchange Online organization is one of the primary benefits of a hybrid deployment.

Users in both organizations can view each other's calendars just as if they were located in the same physical organization. This makes scheduling meetings and resources easy and efficient.

Several components in a hybrid deployment are required to enable the shared free/busy feature in a Microsoft Exchange Server 2013 deployment:

NOT Set-AutodiscoverVirtualDirectory

Changing the Autodiscover virtual directory will not address the issues,

Use the Set-AutodiscoverVirtualDirectory cmdlet to configure settings on the Autodiscover virtual directory on a server running Microsoft Exchange Server 2013. You can run this cmdlet on the local Client Access server or from another

Exchange 2013 server.

EXAMPLE 1

This example sets the authentication method to Digest authentication for the Autodiscover virtual directory.

```
Set-AutodiscoverVirtualDirectory -Identity '\\autodiscover(default Web Site)\' -WindowsAuthentication $false -  
BasicAuthentication $false -DigestAuthentication $true
```

NOT Set-AvailabilityConfig

The Set-AvailabilityConfig cmdlet defines two accounts or security groups: a per-user free/busy proxy account or group, and an organization-wide free/busy proxy account or group.

These accounts and groups are trusted by all availability services in the current organization for availability proxy requests.

For cross-forest availability services to retrieve free/busy information in the current forest, they must be using one of the specified accounts, belong to one of the specified security groups, or have a user name and password for one of the

specified accounts or security groups.



Set-ClientAccessServer

Use the Set-ClientAccessServer cmdlet to set properties on specified Client Access server objects.

EXAMPLE 1

This example sets two properties on the Client Access server CAS-01.

```
Set-ClientAccessServer -Identity "CAS-01" -AutoDiscoverServiceInternalUri  
https://cas01.contoso.com/autodiscover/autodiscover.xml-AutoDiscoverSiteScope
```

```
"Mail"
```

```
-AutodiscoverServiceInternalURI
```

The AutoDiscoverServiceInternalUri parameter specifies the internal URL of the Autodiscover service.

NOT -External

Parameter not related to Set-ClientAccessServer

Parameter not related to Set-AvailabilityConfig

Parameter not related to Set-AutodiscoverVirtualDirectory

NOT -Internal

Parameter not related to Set-ClientAccessServer

Parameter not related to Set-AvailabilityConfig

Parameter not related to Set-AutodiscoverVirtualDirectory

```
http://technet.microsoft.com/en-us/library/bb124251(v=exchg.150).aspx
```

QUESTION 4

You need to recommend changes to the network to ensure that you can deploy the planned Exchange Server 2013 infrastructure.

What should you recommend?

- A. Transfer of the FSMO roles to a domain controller in the Chicago office.
- B. Change the forest functional level.
- C. Change the domain functional level.
- D. Change the operating system on one of the domain controllers in the Chicago office

Correct Answer: D



QUESTION 5

You have an Exchange Server 2013 organization.

You deploy an Office Web Apps Server named Server1.

You need to integrate the Office Web Apps Server and the Exchange Server organization.

What command should you run? To answer, select the appropriate options in the answer area.

Hot Area:

Answer Area

| | | |
|------------------------------------------------------|----------------------------------------------------|----------------------------------------------------------------|
| <input type="text"/> | <input type="text"/> | <input type="text" value="https://Server1/hosting/discovery"/> |
| <input type="text" value="Set-ClientAccessServer"/> | <input type="text" value="-AppforOfficeEnabled"/> | |
| <input type="text" value="Set-MailboxServer"/> | <input type="text" value="-Name"/> | |
| <input type="text" value="Set-OrganizationConfig"/> | <input type="text" value="-URL"/> | |
| <input type="text" value="Set-CWAVirtualDirectory"/> | <input type="text" value="-WACDiscoveryEndPoint"/> | |

Correct Answer:

Answer Area

| | | |
|------------------------------------------------------|----------------------------------------------------|----------------------------------------------------------------|
| <input type="text"/> | <input type="text"/> | <input type="text" value="https://Server1/hosting/discovery"/> |
| <input type="text" value="Set-ClientAccessServer"/> | <input type="text" value="-AppforOfficeEnabled"/> | |
| <input type="text" value="Set-MailboxServer"/> | <input type="text" value="-Name"/> | |
| <input type="text" value="Set-OrganizationConfig"/> | <input type="text" value="-URL"/> | |
| <input type="text" value="Set-CWAVirtualDirectory"/> | <input type="text" value="-WACDiscoveryEndPoint"/> | |

[Latest 70-341 Dumps](#)

[70-341 VCE Dumps](#)

[70-341 Practice Test](#)



To Read the [Whole Q&As](#), please purchase the [Complete Version](#) from [Our website](#).

Try our product !

100% Guaranteed Success

100% Money Back Guarantee

365 Days Free Update

Instant Download After Purchase

24x7 Customer Support

Average 99.9% Success Rate

More than 800,000 Satisfied Customers Worldwide

Multi-Platform capabilities - [Windows](#), [Mac](#), [Android](#), [iPhone](#), [iPod](#), [iPad](#), [Kindle](#)

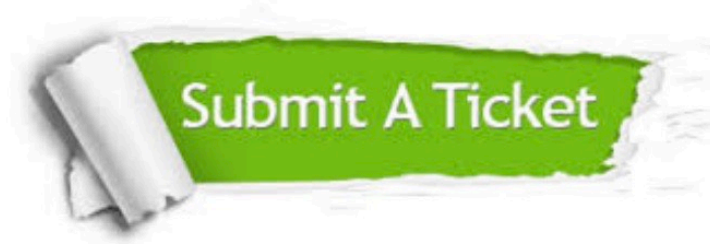
We provide exam PDF and VCE of Cisco, Microsoft, IBM, CompTIA, Oracle and other IT Certifications. You can view Vendor list of All Certification Exams offered:

<https://www.pass4itsure.com/allproducts>

Need Help

Please provide as much detail as possible so we can best assist you.

To update a previously submitted ticket:



| | | |
|---------------------------------------------------------------------------------------------------------------------------------------------------------------------------------------------------------------------------------------------------------------------------------------------------------------------------------|-------------------------------------------------------------------------------------------------------------------------------------------------------------------------------------------------------------------------------------------------------------|------------------------------------------------------------------------------------------------------------------------------------------------------------------------------------------------------------------------------------------------------------------------------------|
|  <p>One Year Free Update Free update is available within One Year after your purchase. After One Year, you will get 50% discounts for updating. And we are proud to boast a 24/7 efficient Customer Support system via Email.</p> |  <p>Money Back Guarantee To ensure that you are spending on quality products, we provide 100% money back guarantee for 30 days from the date of purchase.</p> |  <p>Security & Privacy We respect customer privacy. We use McAfee's security service to provide you with utmost security for your personal information & peace of mind.</p> |
|---------------------------------------------------------------------------------------------------------------------------------------------------------------------------------------------------------------------------------------------------------------------------------------------------------------------------------|-------------------------------------------------------------------------------------------------------------------------------------------------------------------------------------------------------------------------------------------------------------|------------------------------------------------------------------------------------------------------------------------------------------------------------------------------------------------------------------------------------------------------------------------------------|

Any charges made through this site will appear as Global Simulators Limited.

All trademarks are the property of their respective owners.

Copyright © pass4itsure, All Rights Reserved.