



# 70-336<sup>Q&As</sup>

Core Solutions of Microsoft Lync Server 2013

## Pass Microsoft 70-336 Exam with 100% Guarantee

Free Download Real Questions & Answers **PDF** and **VCE** file from:

<https://www.pass4itsure.com/70-336.html>

100% Passing Guarantee  
100% Money Back Assurance

Following Questions and Answers are all new published by Microsoft  
Official Exam Center

-  **Instant Download** After Purchase
-  **100% Money Back** Guarantee
-  **365 Days** Free Update
-  **800,000+** Satisfied Customers



**QUESTION 1**

Which two tasks should be performed to meet the administrative requirements for Tech1? (Each correct answer presents part of the solution. Choose two.)

- A. Modify the permissions of the RTCUniversalServerAdmins group.
- B. Run the New-CsAdminRole cmdlet.
- C. Run the Update-CsAdminRole cmdlet.
- D. Create a new universal security group and add Tech1 to the group.
- E. Create a new global security group and add Tech1 to the group.

Correct Answer: BD

“To create a new role, you must first create a universal security group in Active Directory Domain Services that shares a name with the role;” <http://technet.microsoft.com/en-us/library/gg398271.aspx>

---

**QUESTION 2**

You have a Lync Server 2013 infrastructure.

You deploy mobility features.

You need to ensure that mobile clients can establish IP video calls only when they connect to a wireless access point (WAP).

Which cmdlet should you run?

- A. Set-CsConferencingPolicy
- B. Set-CsLocationPolicy
- C. Set-CsNetworkBandwidthPolicyProfile
- D. Set-CsMobilityPolicy
- E. Set-CsClientPolicy

Correct Answer: D

Mobility policies can also be used to require Wi-Fi connections when making or receiving calls Ref: <http://technet.microsoft.com/en-us/library/hh690021.aspx>

---

**QUESTION 3**

You have a Lync Server 2013 infrastructure. The infrastructure contains four Standard Edition Front End Servers and an Edge Server. You run `Get-CsManagementStoreReplicationStatus | ft ReplicaFQDN, UpToDate` and you receive the following output:



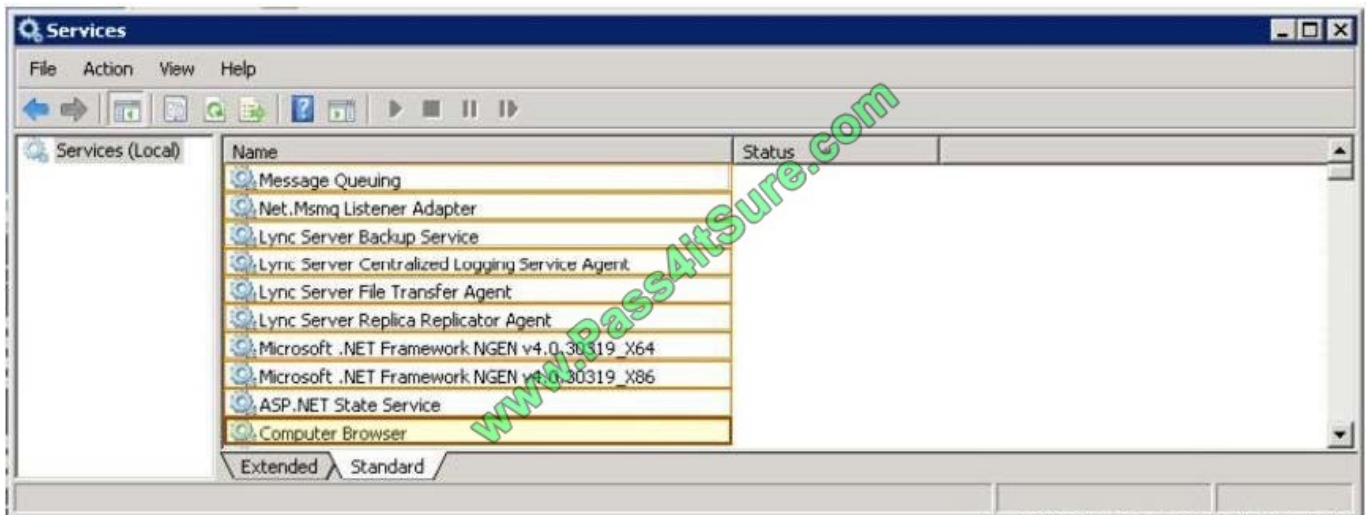
ReplicaFqdn	UpToDate
edge01.contoso.com	False
lyncfe01.contoso.com	False
lyncfe02.contoso.com	False
lyncfe03.contoso.com	False
lyncfe04.contoso.com	False

On the server responsible for the replication of the Central Management store, you discover that several services have stopped.

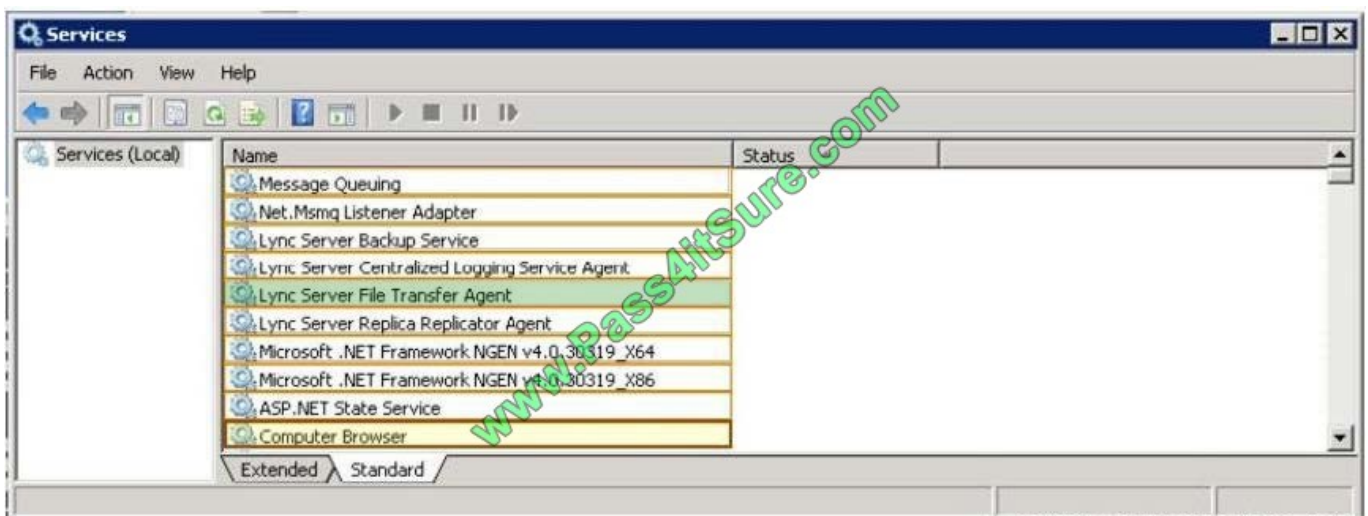
You need to enable the replication of the Central Management store.

Which service should you start? (To answer, select the appropriate service in the answer area.)

Hot Area:



Correct Answer:





#### QUESTION 4

You need to recommend which tasks must be performed to implement the planned unified contact store.

Which three actions should you recommend? (Each correct answer presents part of the solution. Choose three.)

- A. From a server that has Lync Server 2013 deployed, run the Set-CsUserServicesPolicy cmdlet.
- B. From a server that has Lync Server 2013 deployed, run the Set-CsClientPolicy cmdlet.
- C. From a server that has Lync Server 2013 deployed, run the New-CsPartnerApplication cmdlet.
- D. From a server that has Exchange Server 2013 deployed, run the Configure-EnterprisePartnerApplication.ps1 script.
- E. From a server that has Exchange Server 2013 deployed, run the ExchUCUtil.ps1 script.

Correct Answer: ACD

<http://blog.insidelync.com/2012/08/the-lync-2013-preview-unified-contactstore-ucs/>

---

#### QUESTION 5

You have a Lync Server 2010 and Lync Server 2013 infrastructure. The infrastructure contains Front End pools.

Currently, all users use the Lync Server 2010 Front End pool.

An administrator migrates a user to the Lync Server 2013 Front End pool.

After the migration, the user can no longer access the whiteboards, the attachments, the poll data, and the Microsoft PowerPoint presentations that were uploaded to the meeting before the migration.

You need to ensure that the PowerPoint presentations, the whiteboards, the attachments, and the poll data are moved when users migrate from Lync Server 2010 to Lync Server 2013.

What should you do?

- A. Run the Move-CsUser cmdlet and specify the -ProxyPool parameter.
- B. Run the Move-CsLegacyUser cmdlet before you migrate the users.
- C. Run the Move-CsConferenceDirectory cmdlet before you migrate the users.
- D. Run the Move-CsUser cmdlet and specify the -MoveConferenceData parameter.

Correct Answer: D



To Read the [Whole Q&As](#), please purchase the [Complete Version](#) from [Our website](#).

## Try our product !

100% Guaranteed Success

100% Money Back Guarantee

365 Days Free Update

Instant Download After Purchase

24x7 Customer Support

Average 99.9% Success Rate

More than 800,000 Satisfied Customers Worldwide

Multi-Platform capabilities - [Windows](#), [Mac](#), [Android](#), [iPhone](#), [iPod](#), [iPad](#), [Kindle](#)

We provide exam PDF and VCE of Cisco, Microsoft, IBM, CompTIA, Oracle and other IT Certifications. You can view Vendor list of All Certification Exams offered:

<https://www.pass4itsure.com/allproducts>

## Need Help

Please provide as much detail as possible so we can best assist you.

To update a previously submitted ticket:



 <p><b>One Year Free Update</b> Free update is available within One Year after your purchase. After One Year, you will get 50% discounts for updating. And we are proud to boast a 24/7 efficient Customer Support system via Email.</p>	 <p><b>Money Back Guarantee</b> To ensure that you are spending on quality products, we provide 100% money back guarantee for 30 days from the date of purchase.</p>	 <p><b>Security &amp; Privacy</b> We respect customer privacy. We use McAfee's security service to provide you with utmost security for your personal information &amp; peace of mind.</p>
---	---	--

Any charges made through this site will appear as Global Simulators Limited.

All trademarks are the property of their respective owners.

Copyright © pass4itsure, All Rights Reserved.