



# 70-331<sup>Q&As</sup>

Core Solutions of Microsoft SharePoint Server

## Pass Microsoft 70-331 Exam with 100% Guarantee

Free Download Real Questions & Answers **PDF** and **VCE** file from:

<https://www.pass4itsure.com/70-331.html>

100% Passing Guarantee  
100% Money Back Assurance

Following Questions and Answers are all new published by Microsoft  
Official Exam Center

-  **Instant Download** After Purchase
-  **100% Money Back** Guarantee
-  **365 Days** Free Update
-  **800,000+** Satisfied Customers





### QUESTION 1

You need to provide access to the Corporate Projects site collection to remote internal users.

Which authentication mode and site collection URL should you use? (To answer, drag the appropriate answer choices to the correct location or locations in the answer area.)

Each answer choice may be used once, more than once, or not at all. You may need to drag the split bar between panes or scroll to view content.)

Select and Place:

The screenshot shows an exam interface with a list of options on the left and an empty answer table on the right. The options are:

- Classic-mode authentication
- DirectAccess authentication
- Forms-based authentication
- Host-named site collection
- Path-based site collection

The answer area is a table with two columns: **Authentication mode** and **Site collection URL**. The table is currently empty.

Correct Answer:

The screenshot shows the same exam interface as above, but with the correct answer placed in the answer table. The options on the left are:

- Classic-mode authentication
- Forms-based authentication
- Host-named site collection

The answer table now contains:

Authentication mode	Site collection URL
DirectAccess authentication	Path-based site collection

Box 1: DirectAccess authentication Box 2: Path-based site collections Note:

\* From scenario: Automate the sign-in experience by using the local AD FS 2.0 servers for AD FS single sign-on (SSO).

\* The Corporate Projects site collection must be available to internal users who connect from outside of the corporate network and must not require a VPN

connection

\* DirectAccess authenticates the computer before the user logs on. Typically, computer authentication grants access



only to domain controllers and DNS servers.

After the user logs on, DirectAccess authenticates the user, and the user can connect to any resources he or she is authorized to access.

DirectAccess supports standard user authentication using a computer certificate and user account name and password credentials.

DirectAccess supports standard user authentication using a computer certificate and user account name and password credentials. For greater security, you can

implement additional authorization with smart cards. This type of configuration allows users to access Internet resources without their smart cards, but requires a

smart card before users can connect to intranet resources. A user must insert a smart card in addition to typing his or her user credentials. Smart card

authorization prevents an attacker who acquires a user's password (but not the smart card) from accessing the intranet. Similarly, an attacker who acquires the

smart card but does not know the user's password does not have access.

When smart cards are required for end-to-end authentication, you must use Active Directory Domain Services (AD DS) in Windows Server 2008 R2.

\* From scenario: Ensure that a web usage report that contains traffic reports, search reports, and inventory reports can be provided for any site.

\* Microsoft SharePoint supports both path-based and host-named site collections. The primary difference between path-based and host-named site collections is

that all path-based site collections in a Web application share the same host name (DNS name), and each host-named site collection in a Web application is

assigned a unique DNS name.

Path-based site collections

Ex: <http://www.company.com/sites/cust1>

<http://www.company.com/sites/cust2>

<http://www.company.com/sites/cust3>

Host-named site collections

Ex: <http://cust1.company.com>

<http://cust2.company.com>

---

## QUESTION 2

You install SharePoint Server in a three-tiered server farm that meets the minimum requirements for SharePoint 2013 and surrounding technologies. The content databases will reside on Fibre Channel drives in a storage area network (SAN).



The backup solution will utilize SAN snapshots.

You are estimating storage requirements. You plan to migrate 6 TB of current content from file shares to SharePoint.

You need to choose the content database size that will optimize performance, minimize administrative overhead, and minimize the number of content databases.

Which content database size should you choose?

- A. 100 GB
- B. 200 GB
- C. 3 TB
- D. 6 TB

Correct Answer: C

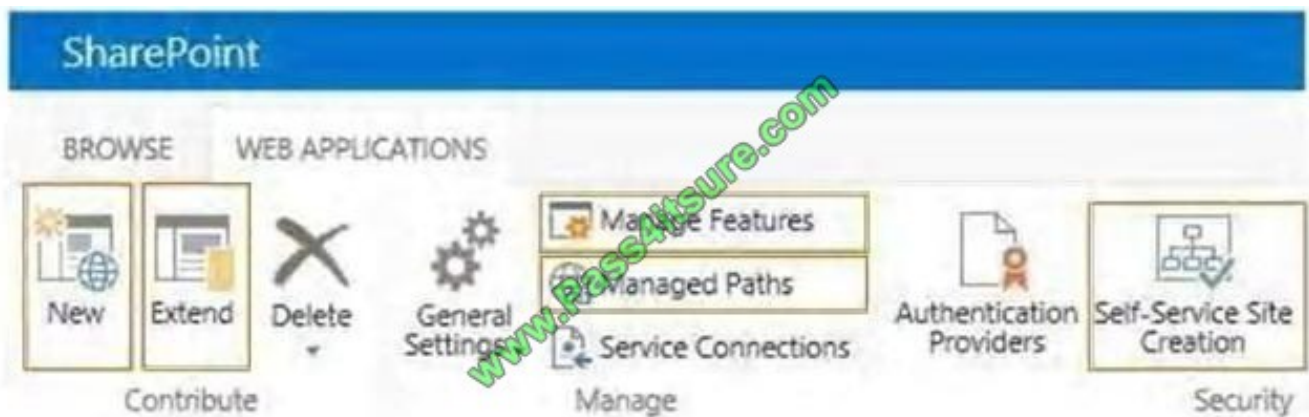
### QUESTION 3

You are setting up individual user sites.

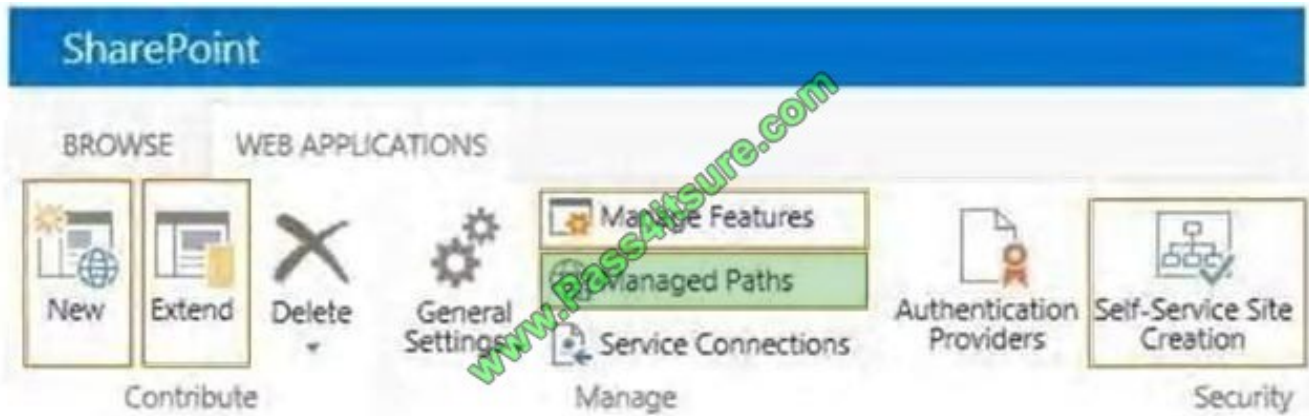
You need to ensure that site addresses follow corporate guidelines.

Which command should you use? (To answer, select the appropriate command in the answer area.)

Hot Area:



Correct Answer:



Note:

When you define managed paths, you can specify the paths in the URL namespace of a web application to use for site collections.

You can specify that one or more site collections exist at a specified path. This can be a convenient method of combining multiple site access for users in various

departments.

Reference: Define managed paths in SharePoint Server 2013

#### QUESTION 4

You need to prepare the web servers for a SharePoint installation in the new farm.

Which three actions should you perform? (Each correct answer presents part of the solution. Choose three.)

- A. Save the PrerequisiteInstaller.Arguments file in the same directory as the prerequisite installer.
- B. Define the installation arguments in a file named PrerequisiteInstaller.Arguments.txt
- C. Install Windows Server 2012 on SERVER02.
- D. Define the installation arguments in a file named PrerequisiteInstaller.Arguments.cfg.
- E. Save the PrerequisiteInstaller.Arguments file in the SharePoint installation directory.
- F. Install Windows Server 2012 on a virtual machine.

Correct Answer: ABF

A, B: Using a text editor, create a new text document named PrerequisiteInstaller.Arguments.txt. Save this file to the same location as PrerequisiteInstaller.exe.

F: From Scenario: All servers must be virtualized unless otherwise specified Note: From scenario (but applies to the database server, not the web servers): The database servers must be physical machines running Windows Server 2012 with direct access to storage. Reference: Install prerequisites for SharePoint 2013 from a network share

**QUESTION 5**

You are the administrator for a company's SharePoint Online environment. The environment hosts several site collections that are used to store and collaborate on (Documents that contain sensitive customer information.

A user in the customer relationship department must share a document that contains scheduling and project information with an external vendor. Only the external vendor and department user must access the document.

You need to ensure that the external vendor can access and collaborate on the document without exposing sensitive customer information.

Which two actions can you perform? Each correct answer presents a complete solution.

- A. Create a document library for the document and require sign-in.
- B. Share the site containing the collaboration document and require sign-in.
- C. Share the document and require sign-in.
- D. Share the document and do not require sign-in.

Correct Answer: AC

External users sign in to the service by using a Microsoft account or a work or school account. We can share the document through a new document library or share the document directly.

Incorrect answers:

Not B: We should not share the entire site. We should just share the document. Not D: External users must sign in to the service by using a Microsoft account or a work or school account.

Reference: <https://support.office.com/en-ca/article/Manage-sharing-with-external-users-in-Office-365-Small-Business-2951a85f-c970-4375-aa4f-6b0d7035fe35?ui=en-US&drs=en-CA&dad=CA>

[70-331 Practice Test](#)

[70-331 Study Guide](#)

[70-331 Exam Questions](#)



To Read the [Whole Q&As](#), please purchase the [Complete Version](#) from [Our website](#).

## Try our product !

100% Guaranteed Success

100% Money Back Guarantee

365 Days Free Update

Instant Download After Purchase

24x7 Customer Support

Average 99.9% Success Rate

More than 800,000 Satisfied Customers Worldwide

Multi-Platform capabilities - [Windows](#), [Mac](#), [Android](#), [iPhone](#), [iPod](#), [iPad](#), [Kindle](#)

We provide exam PDF and VCE of Cisco, Microsoft, IBM, CompTIA, Oracle and other IT Certifications. You can view Vendor list of All Certification Exams offered:

<https://www.pass4itsure.com/allproducts>

## Need Help

Please provide as much detail as possible so we can best assist you.

To update a previously submitted ticket:



 <p><b>One Year Free Update</b> Free update is available within One Year after your purchase. After One Year, you will get 50% discounts for updating. And we are proud to boast a 24/7 efficient Customer Support system via Email.</p>	 <p><b>Money Back Guarantee</b> To ensure that you are spending on quality products, we provide 100% money back guarantee for 30 days from the date of purchase.</p>	 <p><b>Security &amp; Privacy</b> We respect customer privacy. We use McAfee's security service to provide you with utmost security for your personal information &amp; peace of mind.</p>
---	---	--

Any charges made through this site will appear as Global Simulators Limited.

All trademarks are the property of their respective owners.

Copyright © pass4itsure, All Rights Reserved.