



# 70-247<sup>Q&As</sup>

Configuring and Deploying a Private Cloud

## Pass Microsoft 70-247 Exam with 100% Guarantee

Free Download Real Questions & Answers **PDF** and **VCE** file from:

<https://www.pass4itsure.com/70-247.html>

100% Passing Guarantee  
100% Money Back Assurance

Following Questions and Answers are all new published by Microsoft  
Official Exam Center

-  **Instant Download** After Purchase
-  **100% Money Back** Guarantee
-  **365 Days** Free Update
-  **800,000+** Satisfied Customers





**QUESTION 1**

You obtain a Client Authentication certificate.

You need to recommend a solution that meets the manageability requirements of Customer2.

From where should you recommend performing the required tasks? To answer, drag the appropriate locations to the correct tasks. Each location may be used once, more than once, or not at all. You may need to drag the split bar between

panes or scroll to view content.

Select and Place:

Location	Answer Area
RD Gateway virtual machine	Configure trusted issuer certificates. <input type="text" value="Location"/>
Windows Azure Pack Admin portal	Run the <b>Set-SCVMMServer</b> cmdlet. <input type="text" value="Location"/>
VMM Server	Configure a cloud provider for a virtual machine. <input type="text" value="Location"/>
	Install Microsoft System Center Virtual Machine Manager Console Connect Gateway. <input type="text" value="Location"/>

Correct Answer:

Location	Answer Area
RD Gateway virtual machine	Configure trusted issuer certificates. <input type="text" value="RD Gateway virtual machine"/>
Windows Azure Pack Admin portal	Run the <b>Set-SCVMMServer</b> cmdlet. <input type="text" value="VMM Server"/>
VMM Server	Configure a cloud provider for a virtual machine. <input type="text" value="Windows Azure Pack Admin portal"/>
	Install Microsoft System Center Virtual Machine Manager Console Connect Gateway. <input type="text" value="RD Gateway virtual machine"/>



## QUESTION 2

Your network contains two servers named Server1 and Server2. Server1 hosts a System Center 2012 Service Manager management server. Server2 hosts a Service Manager data warehouse management server.

The System Center infrastructure contains test data that was entered during a testing phase. You plan to deploy the System Center servers to the production network. You need to remove the test data from the data warehouse before you

deploy the server to the production network.

You remove the test data from the Service Manager database. What order should you perform the listed actions? (To answer, move all the actions from the list of actions to the answer area and arrange them in the correct order.)

Select and Place:

Actions	Answer area
Delete the data warehouse databases.	
Uninstall the data warehouse management server.	
Stop the data warehouse jobs.	
Install the data warehouse management server.	
Register the data warehouse management server.	
Unregister the data warehouse management server.	

Correct Answer:

Actions	Answer area
	Stop the data warehouse jobs.
	Unregister the data warehouse management server.
	Uninstall the data warehouse management server.
	Delete the data warehouse databases.
	Install the data warehouse management server.
	Register the data warehouse management server.

<http://social.technet.microsoft.com/Forums/en/dwreportingdashboards/thread/9cedc66c-b7aa-478e-8548-7de0a9c1dfab>

## QUESTION 3



You need to configure the storage fabric to support the deployment of the virtual machines. The solution must meet the cloud requirements.

Which three actions should you perform in sequence? (To answer, move the appropriate three actions from the list of actions to the answer area and arrange them in the correct order.)

Select and Place:

Actions	Answer Area
Assign the storage to hosts and clusters.	
Configure the iSCSI initiator.	
Allocate storage to a host group.	
Install the Microsoft iSCSI Software Target.	
Run the Add Storage Devices Wizard.	

Correct Answer:

Actions	Answer Area
Assign the storage to hosts and clusters.	Configure the iSCSI initiator.
	Run the Add Storage Devices Wizard.
	Allocate storage to a host group.
Install the Microsoft iSCSI Software Target.	

Box 1: Configure the iSCSI initiator



Box 2: Run the Add Storage Devices Wizard.

Box 3: Allocate storage to a host group.

Note:

We configure the iSCSI initiator in VMM to connect to the SAN. Then we run the Add Storage Devices Wizard to add the SAN as a storage device. Then we can assign the storage to host groups (not directly to the hosts).

\*

From scenario:

/ Stores all virtual machines on the SAN only.

/ Uses SAN copy to provision the virtual machines.

\*

The following list describes the workflow used to discover, classify, and assign storage using VMM:

/ After configuring storage and assigning to host groups, you can assign the storage to Hyper-V hosts and clusters as shared (Cluster Shared Volume) or available storage. Note that all nodes in the cluster should have access to the storage array using host bus adapters (HBA) or iSCSI. If you allocated a storage pool to a host group, you can create and optionally assign logical units directly from the Properties dialog box of a host or host cluster. If the storage array supports iSCSI host connectivity, you can create iSCSI sessions to the storage array from the Properties dialog box of a host.

/ In addition to discovery and management of iSCSI arrays with static targets, System Center 2012 SP1 adds support for the discovery and management of iSCSI target arrays that support dynamic and manual targets (for example Starwind, HP P2000, HP Lefthand, Dell EqualLogic, and Microsoft iSCSI Software Target).

\*

You can use host groups to group virtual machine hosts in meaningful ways, often based on physical site location and resource allocation.

\*

Storage allocation--You can allocate available storage pools and LUNs to defined host groups that can represent business groups, locations and so on. Resources typically need to be allocated on the host group level before they can be assigned to hosts.

\*

You can create a private cloud from resources in host groups. When you create a private cloud, you select which host groups will be part of the private cloud. You can then allocate all or some of the resources from the selected host groups to the private cloud.

Reference: Configuring Storage in VMM Overview

---

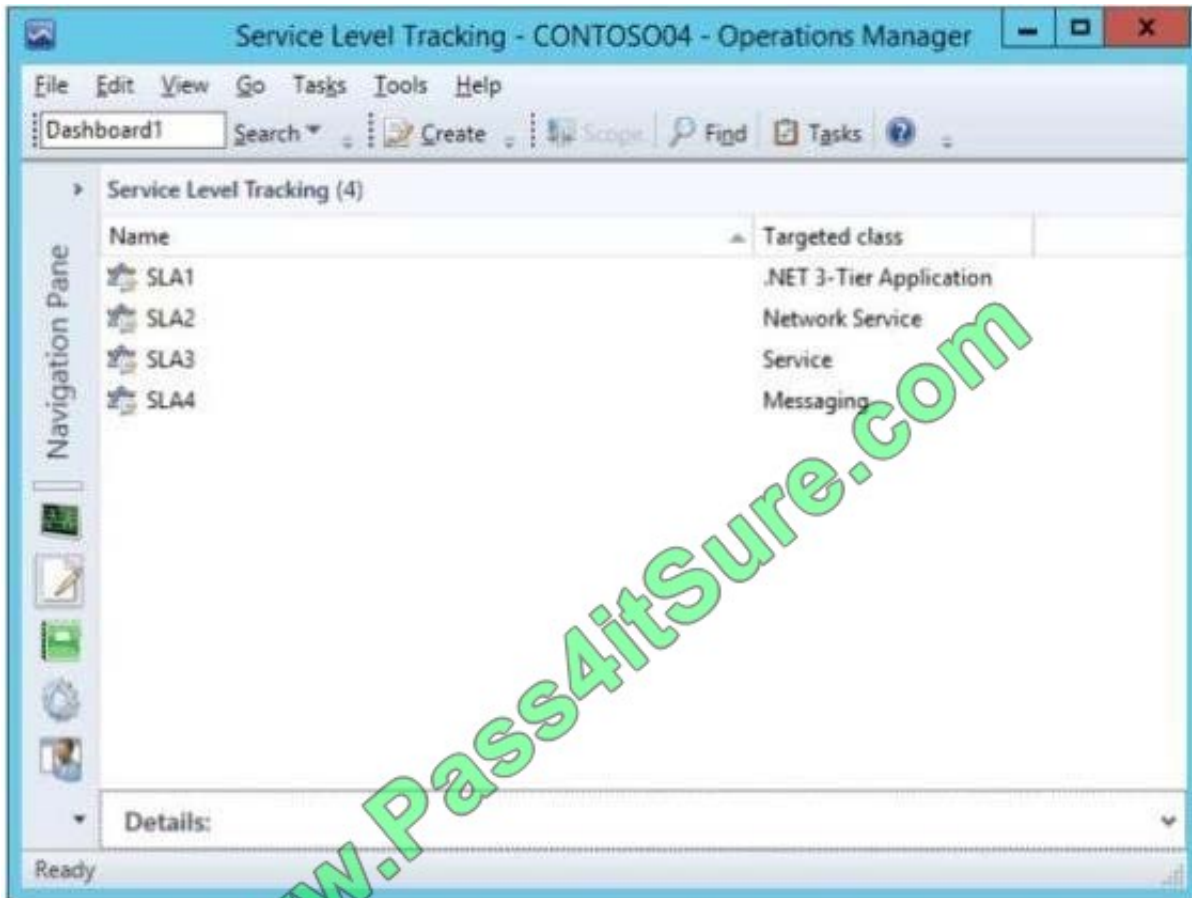
#### QUESTION 4

You have a private cloud that contains a System Center 2012 R2 infrastructure.





You have the service level tracking objects configured as shown in the exhibit (Click the Exhibit button.)



Use the drop-down menus to select the answer choice that completes each statement.

**Answer Area**

A dashboard that includes [answer choice] will display application reliability.

A dashboard that includes [answer choice] will display the status of Windows services.

Use the drop-down menus to select the answer choice that completes each statement.

Hot Area:



### Answer Area

A dashboard that includes [answer choice] will display application reliability.

	▼
SLA1	
SLA2	
SLA3	
SLA4	

A dashboard that includes [answer choice] will display the status of Windows services.

	▼
SLA1	
SLA2	
SLA3	
SLA4	

Correct Answer:

### Answer Area

A dashboard that includes [answer choice] will display application reliability.

	▼
SLA1	
SLA2	
SLA3	
SLA4	

A dashboard that includes [answer choice] will display the status of Windows services.

	▼
SLA1	
SLA2	
SLA3	
SLA4	

### QUESTION 5

You need to recommend a storage fabric configuration for VMM. The solution must meet the requirements for the planned private cloud infrastructure.

Which three actions should you recommend performing in sequence? (To answer, move the appropriate three actions from the list of actions to the answer area and arrange them in the correct order.)

Select and Place:



Actions	Answer Area
Configure a storage array.	
Install the Microsoft iSCSI Software Target component.	
Allocate a storage pool to a host group.	
Add a storage device.	
Configure the iSCSI initiator.	

Correct Answer:

Actions	Answer Area
Configure a storage array.	Configure the iSCSI initiator.
Install the Microsoft iSCSI Software Target component.	Add a storage device.
	Allocate a storage pool to a host group.

Box 1: Configure the iSCSI initiator on the VMM server to connect to the SAN. Box 2: Add a storage device (using the Add Storage Devices Wizard) to add the SAN as available storage. Box 3: Allocate a storage pool to a host group.

[70-247 VCE Dumps](#)

[70-247 Exam Questions](#)

[70-247 Braindumps](#)





To Read the [Whole Q&As](#), please purchase the [Complete Version](#) from [Our website](#).

## Try our product !

100% Guaranteed Success

100% Money Back Guarantee

365 Days Free Update

Instant Download After Purchase

24x7 Customer Support

Average 99.9% Success Rate

More than 800,000 Satisfied Customers Worldwide

Multi-Platform capabilities - [Windows](#), [Mac](#), [Android](#), [iPhone](#), [iPod](#), [iPad](#), [Kindle](#)

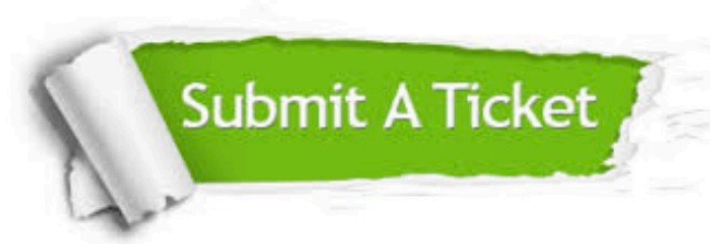
We provide exam PDF and VCE of Cisco, Microsoft, IBM, CompTIA, Oracle and other IT Certifications. You can view Vendor list of All Certification Exams offered:

<https://www.pass4itsure.com/allproducts>

## Need Help

Please provide as much detail as possible so we can best assist you.

To update a previously submitted ticket:



 <p><b>One Year Free Update</b> Free update is available within One Year after your purchase. After One Year, you will get 50% discounts for updating. And we are proud to boast a 24/7 efficient Customer Support system via Email.</p>	 <p><b>Money Back Guarantee</b> To ensure that you are spending on quality products, we provide 100% money back guarantee for 30 days from the date of purchase.</p>	 <p><b>Security &amp; Privacy</b> We respect customer privacy. We use McAfee's security service to provide you with utmost security for your personal information &amp; peace of mind.</p>
---	---	--

Any charges made through this site will appear as Global Simulators Limited.

All trademarks are the property of their respective owners.

Copyright © pass4itsure, All Rights Reserved.