



70-243^{Q&As}

Administering and Deploying System Center 2012 Configuration Manager

Pass Microsoft 70-243 Exam with 100% Guarantee

Free Download Real Questions & Answers **PDF** and **VCE** file from:

<https://www.pass4itsure.com/70-243.html>

100% Passing Guarantee
100% Money Back Assurance

Following Questions and Answers are all new published by Microsoft Official Exam Center

-  **Instant Download** After Purchase
-  **100% Money Back** Guarantee
-  **365 Days** Free Update
-  **800,000+** Satisfied Customers





QUESTION 1

HOTSPOT

Your network contains a System Center 2012 Configuration Manager environment.

You deploy an application to 1,000 client computers.

You need to identify which client computers are in the process of installing the application.

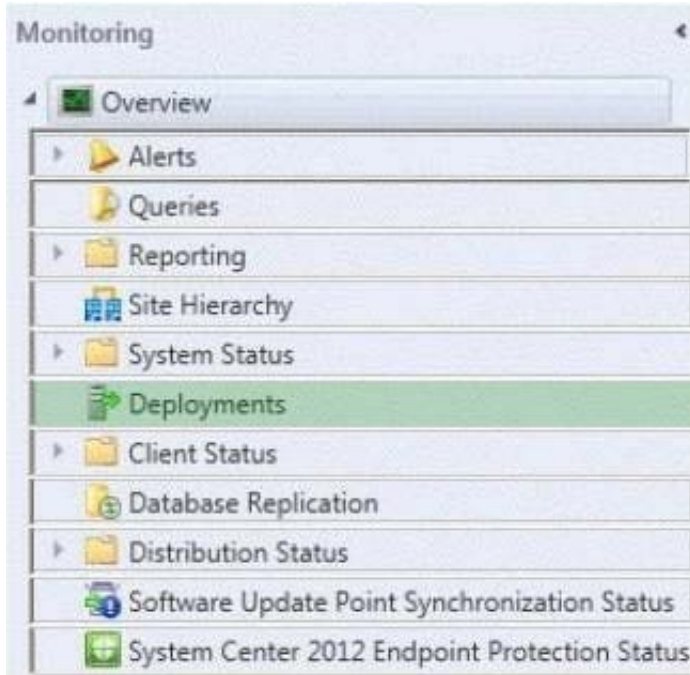
Which node should you select in the Configuration Manager console?

To answer, select the appropriate node in the answer area.

Hot Area:



Correct Answer:



To monitor the state of an application in the Configuration Manager console

1.

In the Configuration Manager console, click Monitoring.

2.

In the Monitoring workspace, click Deployments.

QUESTION 2

DRAG DROP

You have a System Center 2012 R2 Configuration Manager Service Pack 1 (SP1) stand-alone primary site.

You need to create a configuration item that detects the version of an installed application based on a registry value. If version 3 of the application is not installed, the configuration item must install version 3 of the application.

How should you configure the configuration item? To answer drag the appropriate options to the correct locations. Each option may be used once, more than once, or not at all. You may need to drag the split bar between panes or scroll to

view content.

Select and Place:



Options

- Registry value
- Script
- WQL query

Answer Area

Setting type:

Option

Remediation method:

Option

Correct Answer:

Options

- Registry value
- Script
- WQL query

Answer Area

Setting type:

Registry value

Remediation method:

Script

QUESTION 3

HOTSPOT

You have an Active Directory domain named contoso.com. The domain contains three servers named Server1, Server2, and Server3 that run Windows Server 2012 R2. Server1 is a System Center 2012 R2 Configuration Manager Service

Pack 1 (SP1) primary site server.

You plan to install a primary site on Server2.

You need to ensure that Configuration Manager is managed centrally. The solution must minimize administrative effort.

What should you do before you deploy the primary site to Server2? To answer, select the appropriate options in the answer area.

Hot Area:



Answer Area

Component to install on Server3:

	▼
The Central Administration site	
The primary site	
The secondary site	

Component to remove from Server1:

	▼
Configuration Manager 2012 R2 Service Pack 1 (SP1)	
A distribution point	
An Endpoint Protection point	
A management point	

Correct Answer:

Answer Area

Component to install on Server3:

	▼
The Central Administration site	
The primary site	
The secondary site	

Component to remove from Server1:

	▼
Configuration Manager 2012 R2 Service Pack 1 (SP1)	
A distribution point	
An Endpoint Protection point	
A management point	

QUESTION 4

HOTSPOT

You have a System Center 2012 R2 Configuration Manager Service Pack 1 (SP1) standalone primary site.

You have a Configuration Manager application named App1 and a Configuration Manager package named Package1.

You need to ensure that App1 and Package1 are deployed only to Windows 8 computers.

In the table below, identify what to configure for App1 and Package1.



NOTE: Make only one selection in each column.

Hot Area:

Answer Area

Configuration	App1	Package1
Deployment type requirements	<input type="radio"/>	<input type="radio"/>
Distribution settings	<input type="radio"/>	<input type="radio"/>
Program advanced settings	<input type="radio"/>	<input type="radio"/>
Program requirements	<input type="radio"/>	<input type="radio"/>

Correct Answer:

Answer Area

Configuration	App1	Package1
Deployment type requirements	<input type="radio"/>	<input type="radio"/>
Distribution settings	<input type="radio"/>	<input type="radio"/>
Program advanced settings	<input type="radio"/>	<input type="radio"/>
Program requirements	<input checked="" type="radio"/>	<input checked="" type="radio"/>

QUESTION 5

DRAG DROP

You have a System Center 2012 R2 Configuration Manager Service Pack 1 (SP1) deployment that contains the servers configured as shown in the following table.

Server name	Configuration	Site
Server1	Central Administration site	C00
Server2	Primary site server	C01
Server3	Secondary site server Windows Server Update Services (WSUS)	C02
Server4	Windows Server Update Services (WSUS)	C01
Server5	Windows Server Update Services (WSUS)	C01

You need to ensure that Server3, Server4, and Server5 can be used to deploy software updates to Configuration



Manager clients. The Configuration Manager clients in the primary site must be able to receive updates if one of the WSUS

servers becomes unavailable.

Which four actions should you perform in sequence? To answer, move the appropriate actions from the list of actions to the answer area and arrange them in the correct order.

Select and Place:

Actions		Answer Area
Install WSUS on Server1.		
Add a software update point on Server1.		
Add a software update point on Server2.		
Add a software update point on Server3.	➤	⬆
Add a software update point on Server4 and Server5.	⬅	⬇
Install Network Load Balancing (NLB) on Server3 and Server4.		

Correct Answer:

Actions		Answer Area
		Install WSUS on Server1.
		Add a software update point on Server1.
Add a software update point on Server2.		Add a software update point on Server4 and Server5.
		Add a software update point on Server3.
	⬅	
Install Network Load Balancing (NLB) on Server3 and Server4.		⬇

Box 1: Install WSUS on Server1.

Box 2: Add a software update point on Server1.

Box 3: Add a software update point on Server4 and Server5.

Box 4: Add a software update point on Server3.

Note:

*



The software update point is required on the central administration site and on the primary sites to enable the software updates compliance assessment and to deploy software updates to clients. The software update point is optional on secondary sites.

*

When you have a Configuration Manager hierarchy, install and configure the software update point at the central administration site first, and then install and configure the software update point on other sites.

[70-243 VCE Dumps](#)

[70-243 Study Guide](#)

[70-243 Braindumps](#)