



# 70-243<sup>Q&As</sup>

Administering and Deploying System Center 2012 Configuration Manager

**Pass Microsoft 70-243 Exam with 100% Guarantee**

Free Download Real Questions & Answers **PDF** and **VCE** file from:

<https://www.pass4itsure.com/70-243.html>

100% Passing Guarantee  
100% Money Back Assurance

Following Questions and Answers are all new published by Microsoft Official Exam Center

-  **Instant Download** After Purchase
-  **100% Money Back** Guarantee
-  **365 Days** Free Update
-  **800,000+** Satisfied Customers





**QUESTION 1**

**HOTSPOT**

Your network contains a System Center 2012 Configuration Manager environment.

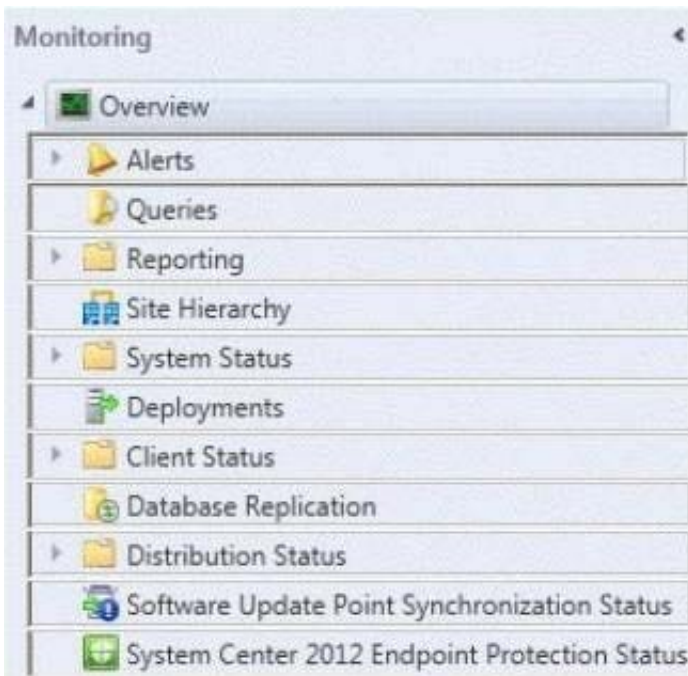
You deploy an application to 1,000 client computers.

You need to identify which client computers are in the process of installing the application.

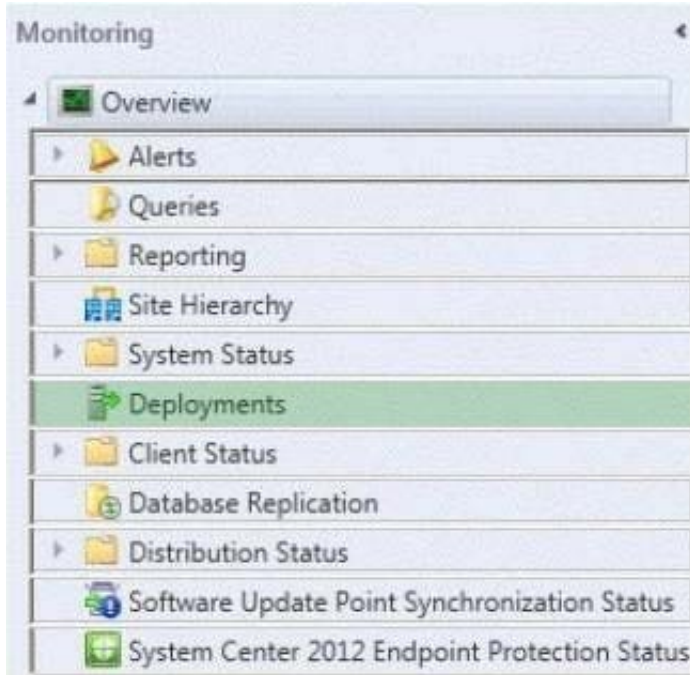
Which node should you select in the Configuration Manager console?

To answer, select the appropriate node in the answer area.

Hot Area:



Correct Answer:



To monitor the state of an application in the Configuration Manager console

1.

In the Configuration Manager console, click Monitoring.

2.

In the Monitoring workspace, click Deployments.

## QUESTION 2

### HOTSPOT

You have an Active Directory domain named contoso.com. The domain contains three servers named Server1, Server2, and Server3 that run Windows Server 2012 R2. Server1 is a System Center 2012 R2 Configuration Manager Service

Pack 1 (SP1) primary site server.

You plan to install a primary site on Server2.

You need to ensure that Configuration Manager is managed centrally. The solution must minimize administrative effort.

What should you do before you deploy the primary site to Server2? To answer, select the appropriate options in the answer area.

Hot Area:



## Answer Area

Component to install on Server3:

|                                 |   |
|---------------------------------|---|
|                                 | ▼ |
| The Central Administration site |   |
| The primary site                |   |
| The secondary site              |   |

Component to remove from Server1:

|  |   |
|--|---|
|  | ▼ |
| Configuration Manager 2012 R2 Service Pack 1 (SP1) |   |
| A distribution point                               |   |
| An Endpoint Protection point                       |   |
| A management point                                 |   |

Correct Answer:

## Answer Area

Component to install on Server3:

|                                 |   |
|---------------------------------|---|
|                                 | ▼ |
| The Central Administration site |   |
| The primary site                |   |
| The secondary site              |   |

Component to remove from Server1:

|  |   |
|--|---|
|  | ▼ |
| Configuration Manager 2012 R2 Service Pack 1 (SP1) |   |
| A distribution point                               |   |
| An Endpoint Protection point                       |   |
| A management point                                 |   |

### QUESTION 3

#### HOTSPOT

You have a System Center 2012 R2 Configuration Manager Service Pack 1 (SP1) deployment.

You use Configuration Manager to deploy Windows 8.1 to client computers.

You need to encrypt the contents of the operating system volume during the operating system deployment and to store recovery keys in Active Directory. The solution must minimize the amount of time required to deploy the operating system.



Which task sequence steps should you use to perform each task? To answer, select the appropriate options in the answer area.

Hot Area:

### Answer Area

Encrypt the drive:

|                         |   |
|-------------------------|---|
|                         | ▼ |
| Enable BitLocker        |   |
| Pre-provision BitLocker |   |

Store the recovery key:

|                              |   |
|------------------------------|---|
|                              | ▼ |
| Enable BitLocker             |   |
| Capture the Windows settings |   |
| Pre-provision BitLocker      |   |

Correct Answer:

### Answer Area

Encrypt the drive:

|                         |   |
|-------------------------|---|
|                         | ▼ |
| Enable BitLocker        |   |
| Pre-provision BitLocker |   |

Store the recovery key:

|                              |   |
|------------------------------|---|
|                              | ▼ |
| Enable BitLocker             |   |
| Capture the Windows settings |   |
| Pre-provision BitLocker      |   |

\*

Pre-provision BitLocker

This step enables BitLocker on a drive while in Windows PE. Only the used drive space is encrypted. Because you partitioned and formatted the hard drive in the previous step, there is no data, and encryption completes very quickly.

\*

Enable BitLocker

This step enables BitLocker encryption on the hard drive and sets key protectors. Because the hard drive was pre-provisioned with BitLocker, this step completes very quickly.

Windows 7/8/10 requires that you add a key protector.



Note: The Pre-provision BitLocker task sequence step in Microsoft System Center 2012 Configuration Manager allows you to enable BitLocker from the Windows Preinstallation Environment (Windows PE) prior to operating system

deployment. Only the used drive space is encrypted, and therefore, encryption times are much faster.

References: <https://technet.microsoft.com/en-us/library/dn456883.aspx>

#### QUESTION 4

##### HOTSPOT

You have a System Center 2012 R2 Configuration Manager Service Pack 1 (SP1) standalone primary site.

You have a Configuration Manager application named App1 and a Configuration Manager package named Package1.

You need to ensure that App1 and Package1 are deployed only to Windows 8 computers.

In the table below, identify what to configure for App1 and Package1.

NOTE: Make only one selection in each column.

Hot Area:

##### Answer Area

| Configuration                | App1                  | Package1              |
|------------------------------|-----------------------|-----------------------|
| Deployment type requirements | <input type="radio"/> | <input type="radio"/> |
| Distribution settings        | <input type="radio"/> | <input type="radio"/> |
| Program advanced settings    | <input type="radio"/> | <input type="radio"/> |
| Program requirements         | <input type="radio"/> | <input type="radio"/> |

Correct Answer:

##### Answer Area

| Configuration                | App1                             | Package1                         |
|------------------------------|----------------------------------|----------------------------------|
| Deployment type requirements | <input type="radio"/>            | <input type="radio"/>            |
| Distribution settings        | <input type="radio"/>            | <input type="radio"/>            |
| Program advanced settings    | <input type="radio"/>            | <input type="radio"/>            |
| Program requirements         | <input checked="" type="radio"/> | <input checked="" type="radio"/> |



**QUESTION 5**

**HOTSPOT**

You manage a System Center 2012 R2 Configuration Manager Service Pack 1 (SP1) site.

You plan to create two collections named Collection1 and Collection2 that have dynamic membership rules. Collection1 will contain all of the servers in the domain. Collection2 will contain only the domain controllers.

You have a Configuration Manager query that you will use as the basis for creating the collection. The query has the following WQL statement.

Select

```
SMS_R_SYSTEM.ResourceID, SMS_R_SYSTEM.ResourceType,
SMS_R_SYSTEM.Name, SMS_R_SYSTEM.SMSUniqueIdentifier,
SMS_R_SYSTEM.ResourceDomainORWorkgroup,
SMS_R_SYSTEM.Client from SMS_R_System inner join
SMS_G_System_SYSTEM on SMS_G_System_SYSTEM.ResourceId =
SMS_R_System.ResourceId where SMS_G_System_SYSTEM.SystemRole = "Server"
```

You need to complete the statement that will be used for each collection.

Which class and attribute should you add in the where clause for each collection? To answer, select the appropriate options in the answer area.

Hot Area:

**Answer Area**

Collection1:

|                                    |
|------------------------------------|
| SMS_G_System_SYSTEM.Domain         |
| SMS_G_System_SYSTEM.SystemRole     |
| SMS_G_System_SYSTEM_ACCOUNT.Domain |
| SMS_R_SYSTEM.SMSUniqueIdentifier   |

Collection2:

|                                    |
|------------------------------------|
| SMS_G_System_SYSTEM.Domain         |
| SMS_G_System_SYSTEM.SystemRole     |
| SMS_G_System_SYSTEM_ACCOUNT.Domain |
| SMS_R_SYSTEM.PrimaryGroupID        |
| SMS_R_SYSTEM.SMSUniqueIdentifier   |

Correct Answer:



## Answer Area

| Collection1: |                                    |
|--------------|------------------------------------|
|              | SMS_G_System_SYSTEM.Domain         |
|              | SMS_G_System_SYSTEM.SystemRole     |
|              | SMS_G_System_SYSTEM_ACCOUNT.Domain |
|              | SMS_R_SYSTEM.SMSUniqueIdentifier   |

| Collection2: |                                    |
|--------------|------------------------------------|
|              | SMS_G_System_SYSTEM.Domain         |
|              | SMS_G_System_SYSTEM.SystemRole     |
|              | SMS_G_System_SYSTEM_ACCOUNT.Domain |
|              | SMS_R_SYSTEM.PrimaryGroupID        |
|              | SMS_R_SYSTEM.SMSUniqueIdentifier   |

\*

All Servers example:

```
select SMS_R_SYSTEM.ResourceID, SMS_R_SYSTEM.ResourceType, SMS_R_SYSTEM.
```

```
Name, SMS_R_SYSTEM.SMSUniqueIdentifier, SMS_R_SYSTEM.ResourceDomainORWorkgroup, SMS_R_SYSTEM.Client from SMS_R_System inner join
```

```
SMS_G_System_SYSTEM on SMS_G_System_SYSTEM.ResourceId =
```

```
SMS_R_System.ResourceId where SMS_G_System_SYSTEM.SystemRole = "Server"
```

\*

All Domain Controllers example:

```
select
```

```
SMS_R_SYSTEM.ResourceID, SMS_R_SYSTEM.ResourceType, SMS_R_SYSTEM.Name, SMS_R_SYSTEM.SMSUniqueIdentifier, SMS_R_SYSTEM.ResourceDomainORWorkgroup, SMS_R_SYSTEM.Client from SMS_R_System where
```

```
SMS_R_System.PrimaryGroupID= "516"
```

```
SMS_G_SYSTEM_ACCOUNT.Domain
```

```
SMS_G_SYSTEM.DOMAIN
```

```
SMS_R_SYSTEM.SMSUniqueIdentifier
```

References: Useful ConfigMgr Collection Queries

<http://blogs.technet.com/b/ryanar/archive/2014/01/27/useful-configmgr-collectionqueries.aspx>

[70-243 PDF Dumps](#)

[70-243 Study Guide](#)

[70-243 Exam Questions](#)