



642-648^{Q&As}

Deploying Cisco ASA VPN Solutions (VPN v2.0)

Pass Cisco 642-648 Exam with 100% Guarantee

Free Download Real Questions & Answers **PDF** and **VCE** file from:

<https://www.pass4itsure.com/642-648.html>

100% Passing Guarantee
100% Money Back Assurance

Following Questions and Answers are all new published by Cisco
Official Exam Center

- ⚙ **Instant Download** After Purchase
- ⚙ **100% Money Back** Guarantee
- ⚙ **365 Days** Free Update
- ⚙ **800,000+** Satisfied Customers





QUESTION 1

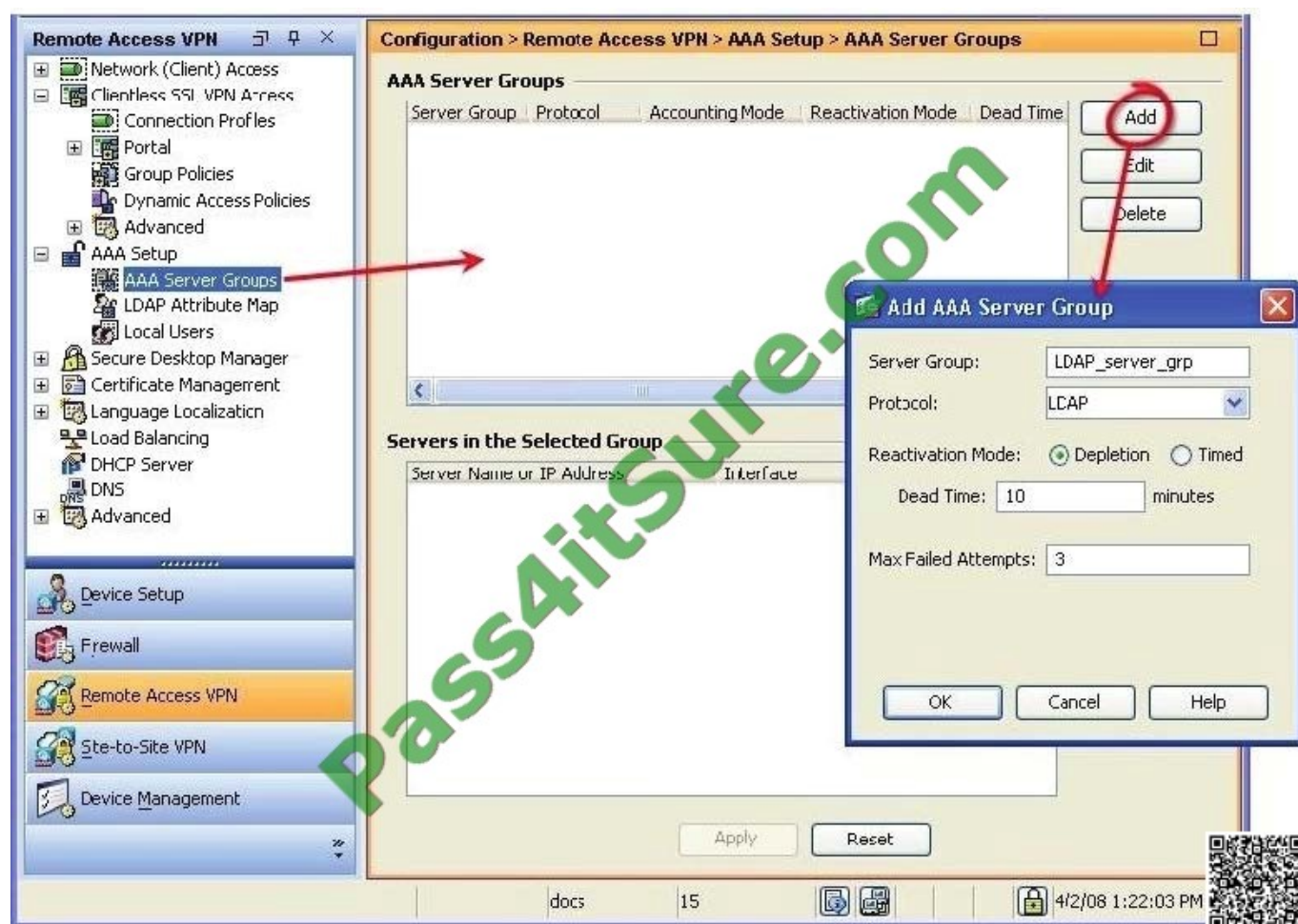
Which statement about CRL configuration is correct?

- A. CRL checking is enabled by default.
- B. The Cisco ASA relies on HTTPS access to procure the CRL list.
- C. The Cisco ASA relies on LDAP access to procure the CRL list.
- D. The Cisco Secure ACS can be configured as the CRL server.

Correct Answer: C

ASA SSLVPN deployment guide:

The security appliance supports various authentication methods: RSA one-time passwords, Radius, Kerberos, LDAP, NT Domain, TACACS, Local/Internal, digital certificates, and a combination of both authentication and certificates.



QUESTION 2



A network architect designed a redundant site-to-site IPsec VPN. In this site-to-site IPsec VPN solution are two standalone Cisco ASA appliances that are deployed at the headquarters office site. A site-to-site VPN tunnel is established between the remote office and online peer (192.168.4.1).

To enable the remote office devices to be advertised correctly at headquarters, select the three Cisco ASA parameters and the ends in which they should be applied. R=remote end; H=headquarters end. (Choose three)

- A. R-Configure Originate-Only
- B. H-Configure Originate-Only
- C. R-Configure Answer-Only
- D. H-Configure Answer-Only
- E. R-Enable RRI
- F. H-Enable RRI

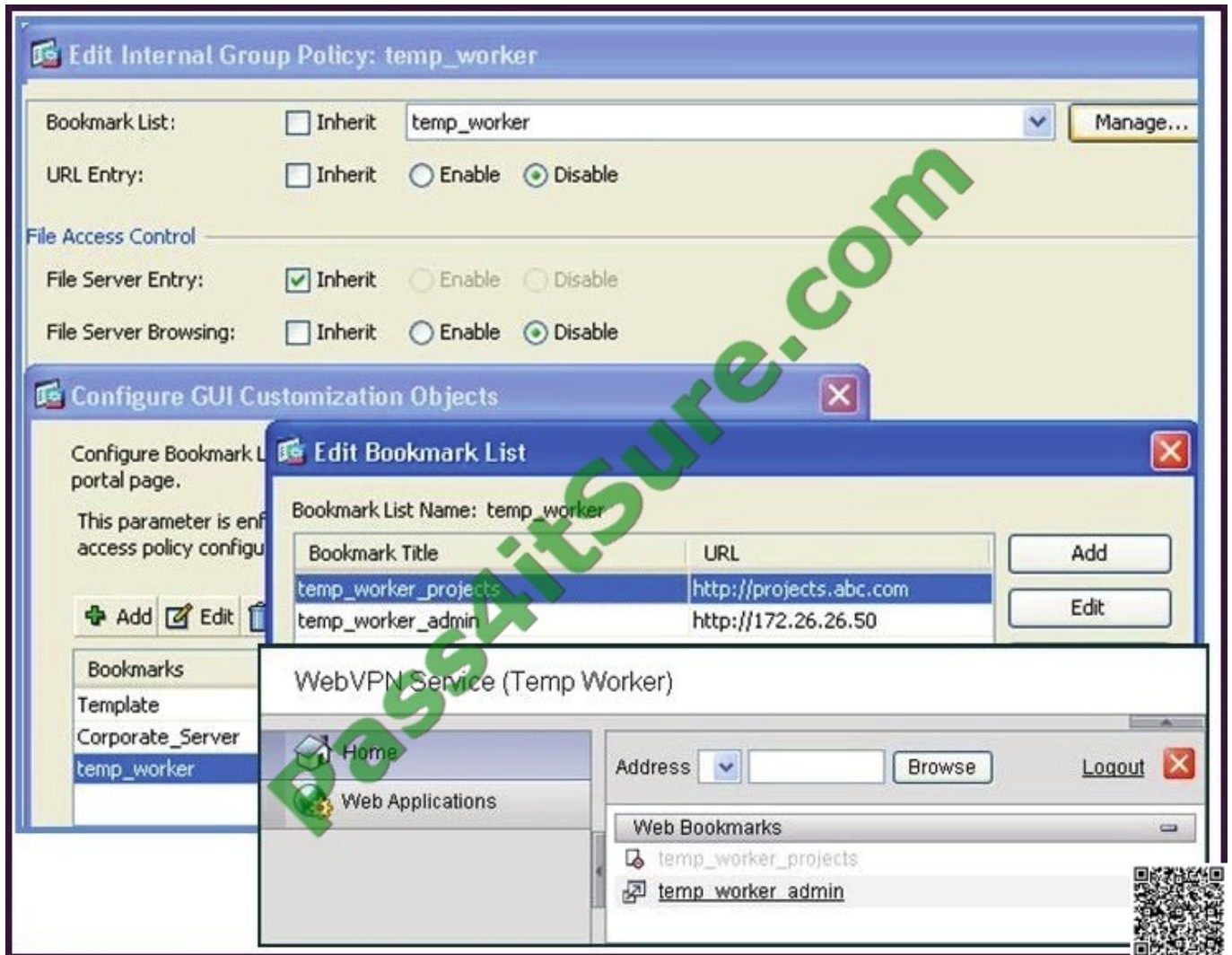
Correct Answer: ADF

<http://secret-epedemiology-statistic.org.ua/1587052091/ch15lev1sec4.html>

Connection Type The Cisco ASA in the site-to-site tunnel can respond and initiate a VPN connection. This bidirectional default behavior can be changed to answer-only or originate- only mode. For example, if you want to limit the security Cisco ASA to just initiate IKE tunnels, you can set the connection type to originate-only. This way, if the remote VPN peer tries to initiate the connection, the local Cisco ASA will not honor the request. Similarly, if you want the security Cisco ASA to accept IKE tunnels only from the peer, then you can set the connection type to answer-only. The command syntax to set the connection type is Crypto map map-name seq-num set connection-type {answer-only | bidirectional |

QUESTION 3

Refer to the exhibit.



A new network engineer configured the ABC adaptive security appliance with two bookmarks for a new temporary worker. The temporary worker can connect to the administrator server via the temp_worker_admin bookmark but cannot

connect to the project server via the temp_worker_projects bookmark (which is grayed out). It was determined that the URL and IP addressing information in the GUI screens is correct.

What is wrong with the configuration?

- A. URL Entry should be enabled.
- B. The File Server Entry Inherit parameter should be overwritten and set for enabled.
- C. The DNS server information is incorrect.
- D. File Server Browsing should be enabled.

Correct Answer: C

QUESTION 4



On the right, a permanent (P) or temporary (T) license is added to a Cisco ASA 5520. The merged license results in new capabilities for the Cisco ASA 5520. Drag the new resultant license on the left to the merging licenses on the right.

Select and Place:

On the right, a permanent (P) or temporary (T) license is added to a Cisco ASA 5520. The merged license results in new capabilities for the Cisco ASA 5520. Drag the new resultant license on the left to the merging licenses on the right.

Base (P) + 50 SSL users (P)	Base (P) and 25 SSL users (P). Add 50 SSL users (P).
Base (P) + 50 SSL users (T)	Base (P) and 50 SSL users (T). Add 25 SSL (P).
Base (P) + 25 SSL users (P)	Base (P) and 25 SSL users (P). Add Botnet (T).
Base + 25 SSL users + Botnet	Base (P) and 25 SSL users (P) and Botnet (T). Add 50 SSL (T).

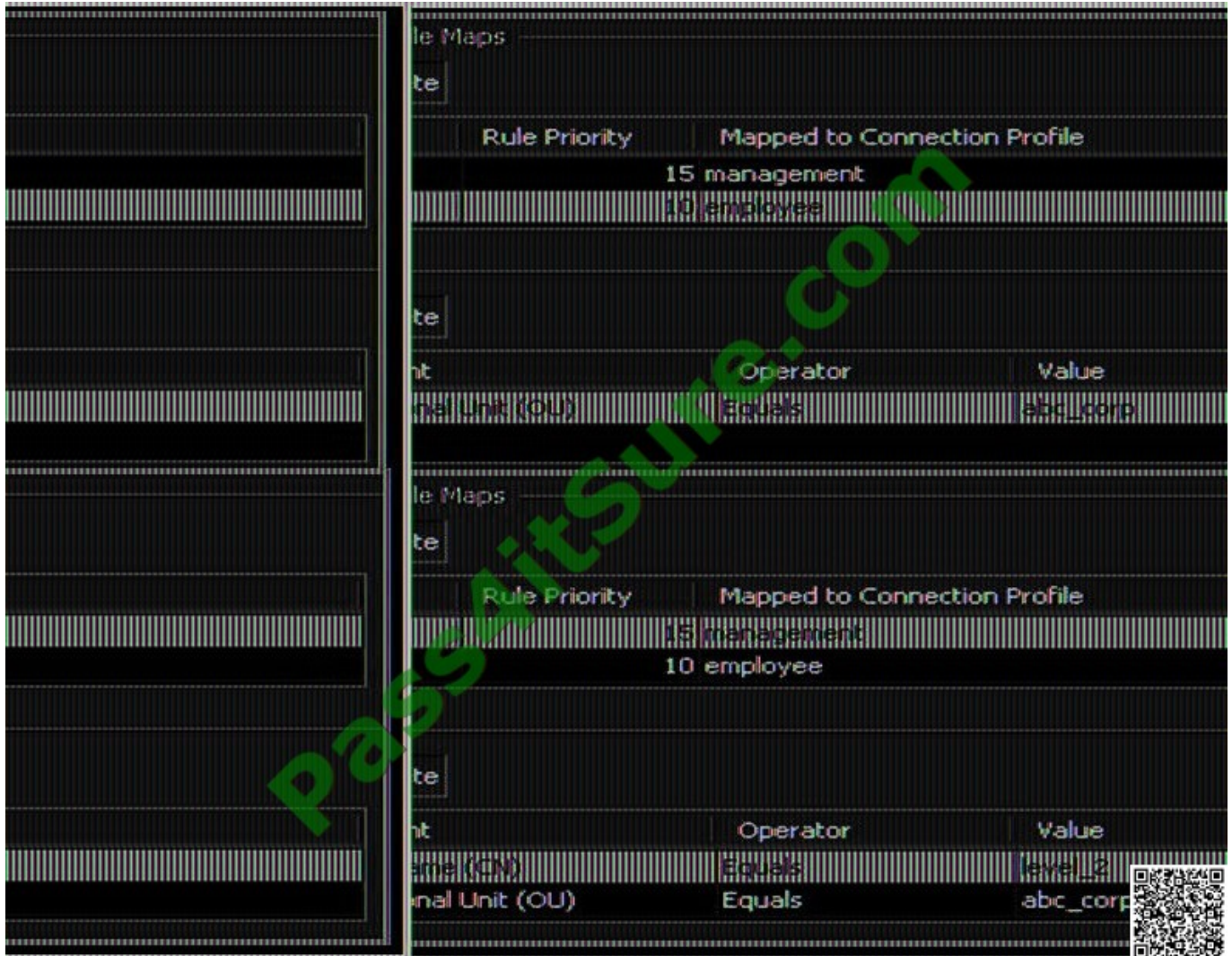
Correct Answer:

On the right, a permanent (P) or temporary (T) license is added to a Cisco ASA 5520. The merged license results in new capabilities for the Cisco ASA 5520. Drag the new resultant license on the left to the merging licenses on the right.

	Base (P) + 50 SSL users (P)
	Base (P) + 25 SSL users (P)
	Base + 25 SSL users + Botnet
	Base (P) + 50 SSL users (T)

**QUESTION 5**

Refer to the exhibit.



You have configured two SSL VPN Certificate to Connection Profile Maps for all employee and management users. The Connection Profiles for the management users are not being applied when the "management" users connect.

Based on the configuration that is shown, what is the most likely cause of this issue?

- A. The rule priority of the employee mapping is not low enough, and it needs to be lowered to 1.
- B. The priority of the employee mapping is too low, and it needs to be increased, but not higher than the rule priority of the management mapping.
- C. The priority of the management mapping is too high, and it needs to be lower than the rule priority of the employee mapping.
- D. The matching criteria for the management mapping is too specific, and the CN matching parameter should be removed.



Correct Answer: C

ASDM user guide p[age 35 52 Use the Add/Edit Certificate Matching Rule dialog box to assign the name of a list (map) to a connection profile. Fields ?Map--Choose one of the following: - Existing--Select the name of the map to include the rule. New--Enter a new map name for a rule. ?Rule Priority--Type a decimal to specify the sequence with which the security appliance evaluates the map when it receives a connection request. For the first rule defined, the default priority is 10. The security appliance evaluates each connection against the map with the lowest priority number first. ?Mapped to Connection Profile--Select the connection profile, formerly called a "tunnel group," to map to this rule. If you do not assign a rule criterion to the map, as described in the next section, the security appliance ignores the map entry.



[642-648 VCE Dumps](#)

[642-648 Exam Questions](#)

[642-648 Braindumps](#)



To Read the [Whole Q&As](#), please purchase the [Complete Version](#) from [Our website](#).

Try our product !

100% Guaranteed Success

100% Money Back Guarantee

365 Days Free Update

Instant Download After Purchase

24x7 Customer Support

Average 99.9% Success Rate

More than 800,000 Satisfied Customers Worldwide

Multi-Platform capabilities - Windows, Mac, Android, iPhone, iPod, iPad, Kindle

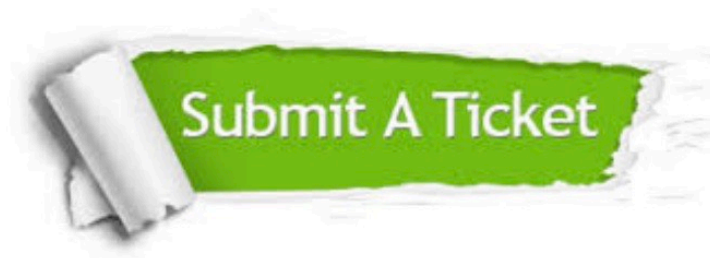
We provide exam PDF and VCE of Cisco, Microsoft, IBM, CompTIA, Oracle and other IT Certifications. You can view Vendor list of All Certification Exams offered:

<https://www.pass4itsure.com/allproducts>

Need Help

Please provide as much detail as possible so we can best assist you.

To update a previously submitted ticket:



 One Year Free Update <p>Free update is available within One Year after your purchase. After One Year, you will get 50% discounts for updating. And we are proud to boast a 24/7 efficient Customer Support system via Email.</p>	 Money Back Guarantee <p>To ensure that you are spending on quality products, we provide 100% money back guarantee for 30 days from the date of purchase.</p>	 Security & Privacy <p>We respect customer privacy. We use McAfee's security service to provide you with utmost security for your personal information & peace of mind.</p>
---	---	--

Any charges made through this site will appear as Global Simulators Limited.

All trademarks are the property of their respective owners.

Copyright © pass4itsure, All Rights Reserved.