



642-648^{Q&As}

Deploying Cisco ASA VPN Solutions (VPN v2.0)

Pass Cisco 642-648 Exam with 100% Guarantee

Free Download Real Questions & Answers **PDF** and **VCE** file from:

<https://www.pass4itsure.com/642-648.html>

100% Passing Guarantee
100% Money Back Assurance

Following Questions and Answers are all new published by Cisco
Official Exam Center

-  **Instant Download** After Purchase
-  **100% Money Back** Guarantee
-  **365 Days** Free Update
-  **800,000+** Satisfied Customers



**QUESTION 1**

When deploying clientless SSL VPN advanced application access, the administrator needs to collect information about the end-user system. Which three input parameters of an end-user system are important for the administrator to identify? (Choose three.)

- A. types of applications and application protocols that are supported
- B. types of encryption that are supported on the end-user system
- C. the local privilege level of the remote user
- D. types of wireless security that are applied to the end-user tunnel interface
- E. types of operating systems that are supported on the end-user system
- F. type of antivirus software that is supported on the end-user system

Correct Answer: ACE

When enabling port forwarding, the SSL VPN gateway will modify the hosts file on the PC of the remote user. Some software configurations and software security applications will detect this modification and prompt the remote user to select "Yes" to permit. To permit the modification, the remote user must have local administrative privileges. To securely access resources on a private network behind an SSL VPN gateway, the remote user of an SSL VPN service must have the following: ?;Thin Clie"; support used for TCP port-forwarding applications requires administrative privileges on the computer of the remote user. ?;Tunnel mod"; for Cisco SSL VPN requires administrative privileges for initial installation of the full tunnel client. ?The remote user must have local administrative privileges to use thin client or full tunnel client features. Operating system support ?Microsoft Windows 2000, Windows XP, or Windows Vista ?Macintosh OS X 10.4.6 ?Linux (Redhat RHEL 3.0 +, FEDORA 5, or FEDORA 6) SSL VPN-supported browser--The following browsers have been verified for SSL VPN. Other browsers might not fully support SSL VPN features.

QUESTION 2

What is the selection hierarchy to which attributes are applied to a clientless SSL VPN use? Drag an attribute policy on the to the correct priority level within the attribute hierarchy on the right.

Select and Place:



What is the selection hierarchy to which attributes are applied to a clientless SSL VPN user? Drag an attribute policy on the left to the correct priority level within the attribute hierarchy on the right

- Group Policy attributes attached to the user profile
- User Policy attributes
- DAP attributes
- Default Group Policy attributes
- Group Policy attributes attached to the connection profile

- highest priority
-
-
-
- lowest priority

Correct Answer:

What is the selection hierarchy to which attributes are applied to a clientless SSL VPN user? Drag an attribute policy on the left to the correct priority level within the attribute hierarchy on the right

-
-
-
-
-
-

- DAP attributes
- User Policy attributes
- Group Policy attributes attached to the user profile
- Group Policy attributes attached to the connection profile
- Default Group Policy attributes

QUESTION 3

An IT manager and a Security manager are discussing the deployment options for clientless SSL VPN. They are trying to decide which groups are best suited for this new deployment option. Which two groups are the best candidates for



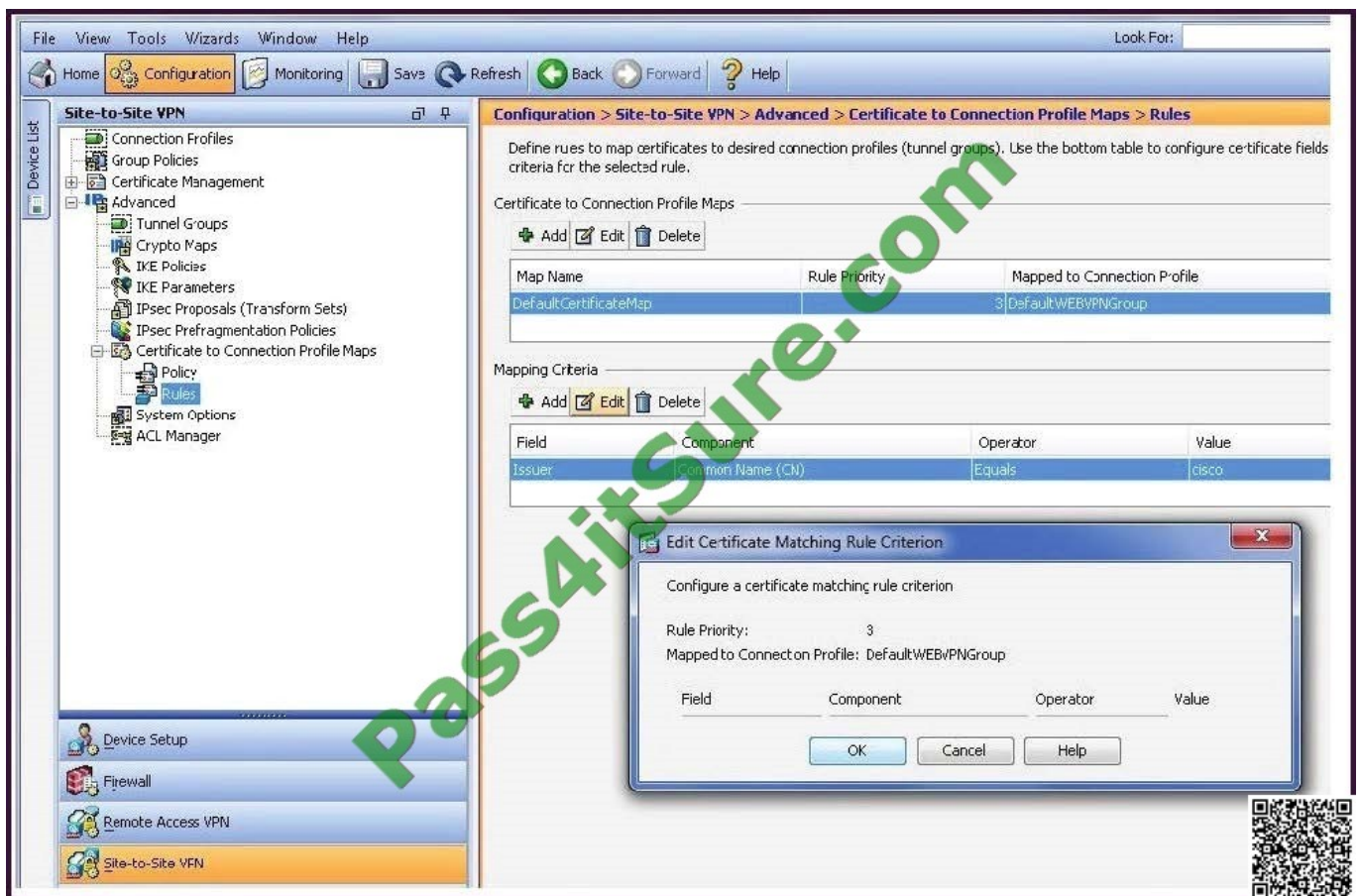
the clientless SSL VPN rollout? (Choose two.)

- A. an IT administrator who needs to manage servers from a corporate laptop
- B. employees who need occasional access to check their email accounts
- C. a vendor who needs access to confidential corporate presentations via Secure FTP
- D. customers who need interactive access to the corporate invoice server

Correct Answer: BC

QUESTION 4

Refer to the exhibit.



In the Edit Certificate Matching Rule Criterion window, you want to change the Mapped to Connection Profile. However, you cannot perform that action from this window.

Where should you navigate to and what should you do, in order to perform this change?

- A. Edit the entry in the Certificate Management window.
- B. Edit the entry in the Connection Profiles window.



- C. Edit the entry in the Certificate to Connection Profile Maps window.
- D. Edit the entry in IKE Policies window.
- E. Delete this entry in the Mapping Criteria window, and add a new entry in the same location.

Correct Answer: C

QUESTION 5

Which statement regarding hashing is correct?

- A. MD5 produces a 64-bit message digest.
- B. SHA-1 produces a 160-bit message digest.
- C. MD5 takes more CPU cycles to compute than SHA-1.
- D. Changing 1 bit of the input to SHA-1 can change up to 5 bits in the output.

Correct Answer: B

[642-648 VCE Dumps](#)

[642-648 Exam Questions](#)

[642-648 Braindumps](#)



To Read the [Whole Q&As](#), please purchase the [Complete Version](#) from [Our website](#).

Try our product !

100% Guaranteed Success

100% Money Back Guarantee

365 Days Free Update

Instant Download After Purchase

24x7 Customer Support

Average 99.9% Success Rate

More than 800,000 Satisfied Customers Worldwide

Multi-Platform capabilities - [Windows](#), [Mac](#), [Android](#), [iPhone](#), [iPod](#), [iPad](#), [Kindle](#)

We provide exam PDF and VCE of Cisco, Microsoft, IBM, CompTIA, Oracle and other IT Certifications. You can view Vendor list of All Certification Exams offered:

<https://www.pass4itsure.com/allproducts>

Need Help

Please provide as much detail as possible so we can best assist you.

To update a previously submitted ticket:



 <p>One Year Free Update Free update is available within One Year after your purchase. After One Year, you will get 50% discounts for updating. And we are proud to boast a 24/7 efficient Customer Support system via Email.</p>	 <p>Money Back Guarantee To ensure that you are spending on quality products, we provide 100% money back guarantee for 30 days from the date of purchase.</p>	 <p>Security & Privacy We respect customer privacy. We use McAfee's security service to provide you with utmost security for your personal information & peace of mind.</p>
---	---	--

Any charges made through this site will appear as Global Simulators Limited.

All trademarks are the property of their respective owners.

Copyright © pass4itsure, All Rights Reserved.