



# 642-647<sup>Q&As</sup>

Deploying Cisco ASA VPN Solutions (VPN v1.0)

## Pass Cisco 642-647 Exam with 100% Guarantee

Free Download Real Questions & Answers **PDF** and **VCE** file from:

<https://www.pass4itsure.com/642-647.html>

100% Passing Guarantee  
100% Money Back Assurance

Following Questions and Answers are all new published by Cisco  
Official Exam Center

-  **Instant Download** After Purchase
-  **100% Money Back** Guarantee
-  **365 Days** Free Update
-  **800,000+** Satisfied Customers





### QUESTION 1

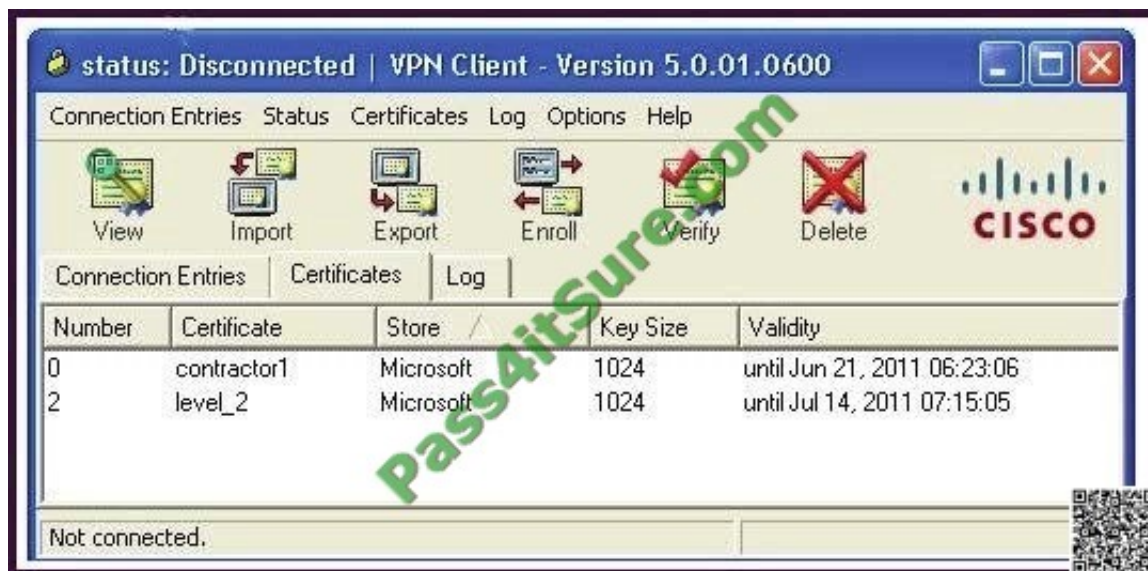
You have been using pre-shared keys for IKE authentication on your VPN. Your network has grown rapidly, and now you need to create VPNs with numerous IPsec peers. How can you enable scaling to numerous IPsec peers?

- A. Migrate to external CA-based digital certificate authentication.
- B. Migrate to a load-balancing server.
- C. Migrate to a shared license server.
- D. Migrate from IPsec to SSL VPN client extended authentication.

Correct Answer: A

### QUESTION 2

Refer to the exhibit.



As the administrator of a Cisco ASA security appliance for remote-access IPsec VPNs, you are assisting a user who has a digital certificate that is configured for the Cisco VPN Client. Based on the exhibit, what do you do to find the MD5 thumbprint of the "level\_2" certificate?

- A. Choose the certificate, then click Status > Certificates from the menu bar.
- B. Choose the certificate, then click the View button.
- C. Choose the certificate, then click Options > Properties from the menu bar.
- D. Choose the certificate, then click the Verify button.

Correct Answer: B



### QUESTION 3

When troubleshooting a site-to-site IPsec VPN deployment, you see a QM FSM message. What is the most likely cause of this message?

- A. The Quick Mode timers have expired.
- B. There are mismatched proxy identities.
- C. Forward Secrecy Mode has failed.
- D. IKE Phase 1 has failed authentication due to mismatched DH groups.

Correct Answer: B

### QUESTION 4

Refer to the exhibit.

```
access-list outside_cryptomap_1 line 1 extended deny tcp any host 10.0.4.4 eq https
access-list outside_cryptomap_1 line 1 extended permit tcp any host 10.0.4.0 255.255.255.0 eq https
crypto map outside_map 1 match address outside_cryptomap_1
```



In the CLI snippet that is shown, what is the function of the deny option in the access list?

- A. When set in conjunction with outbound connection-type bidirectional, its function is to prevent the specified traffic from being protected by the crypto map entry.
- B. When set in conjunction with connection-type originate-only, its function is to instruct the Cisco ASA to deny specific inbound traffic if it is not encrypted.
- C. When set in conjunction with outbound connection-type answer-only, its function is to instruct the Cisco ASA to deny specific outbound traffic if it is not encrypted.
- D. When set in conjunction with connection-type originate-only, its function is to cause all IP traffic that matches the specified conditions to be protected by the crypto map.

Correct Answer: A

### QUESTION 5

For clientless SSL VPN users, bookmarks can be assigned to their portal. What are three methods for assigning bookmarks? (Choose three.)

- A. connection profiles
- B. group policies
- C. XML profiles
- D. LDAP or RADIUS attributes



E. the portal customization tool

F. user policies

Correct Answer: BDF

[642-647 VCE Dumps](#)

[642-647 Practice Test](#)

[642-647 Braindumps](#)



To Read the [Whole Q&As](#), please purchase the [Complete Version](#) from [Our website](#).

## Try our product !

100% Guaranteed Success

100% Money Back Guarantee

365 Days Free Update

Instant Download After Purchase

24x7 Customer Support

Average 99.9% Success Rate

More than 800,000 Satisfied Customers Worldwide

Multi-Platform capabilities - [Windows](#), [Mac](#), [Android](#), [iPhone](#), [iPod](#), [iPad](#), [Kindle](#)

We provide exam PDF and VCE of Cisco, Microsoft, IBM, CompTIA, Oracle and other IT Certifications. You can view Vendor list of All Certification Exams offered:

<https://www.pass4itsure.com/allproducts>

## Need Help

Please provide as much detail as possible so we can best assist you.

To update a previously submitted ticket:



 <p><b>One Year Free Update</b> Free update is available within One Year after your purchase. After One Year, you will get 50% discounts for updating. And we are proud to boast a 24/7 efficient Customer Support system via Email.</p>	 <p><b>Money Back Guarantee</b> To ensure that you are spending on quality products, we provide 100% money back guarantee for 30 days from the date of purchase.</p>	 <p><b>Security &amp; Privacy</b> We respect customer privacy. We use McAfee's security service to provide you with utmost security for your personal information &amp; peace of mind.</p>
---	---	--

Any charges made through this site will appear as Global Simulators Limited.

All trademarks are the property of their respective owners.

Copyright © pass4itsure, All Rights Reserved.