



# 642-647<sup>Q&As</sup>

Deploying Cisco ASA VPN Solutions (VPN v1.0)

## Pass Cisco 642-647 Exam with 100% Guarantee

Free Download Real Questions & Answers **PDF** and **VCE** file from:

<https://www.pass4itsure.com/642-647.html>

100% Passing Guarantee  
100% Money Back Assurance

Following Questions and Answers are all new published by Cisco  
Official Exam Center

-  **Instant Download** After Purchase
-  **100% Money Back** Guarantee
-  **365 Days** Free Update
-  **800,000+** Satisfied Customers





### QUESTION 1

Datagram Transport Layer Security (DTLS) was introduced to solve performance issues. Choose three characteristics of DTLS. (Choose three.)

- A. It uses TLS to negotiate and establish DTLS connections.
- B. It uses DTLS to transmit datagrams.
- C. It is disabled by default.
- D. It uses TLS for data packet retransmission.
- E. It replaces underlying transport layer with UDP 443.
- F. It uses TLS to provide low-latency video application tunneling.

Correct Answer: ABE

### QUESTION 2

Refer to the exhibit.

```
access-list temp_acl webtype permit url http://10.0.4.10
webvpn
enable outside
svc enable
tunnel-group-list enable
group-policy temp_worker internal
group-policy temp_worker attributes
banner value Welcome Temp Workers!
vpn-tunnel-protocol webvpn
vlan 100
webvpn
url-list value Corporate_Server
url-entry disable
group-policy Default attributes
vpn-tunnel-protocol IPSec svc webvpn
webvpn
url-list value Corporate_Server
filter value temp_acl
username temp1 password cisco

username temp1 attributes
vpn-group-policy temp_worker
vpn-tunnel-protocol webvpn
group-lock value temp_worker
service-type remote-access
webvpn
file-browsing disable
file-entry enable
url-entry disable
hidden-shares none
url-list value Corporate_Server
customization value temp_worker
tunnel-group temp_worker type remote-access
tunnel-group temp_worker general-attributes
default-group-policy temp_worker
tunnel-group temp_worker webvpn-attributes
customization temp_worker
group-alias temp_worker enable
group-url https://192.168.4.2/temp_worker
```

A junior network engineer configured the corporate Cisco ASA appliance to accommodate a new temporary worker. For security reasons, the IT department wants to restrict the internal network access of the new temporary worker to the corporate server, with an IP address of 10.0.4.10. After the junior network engineer finished the configuration, an IT security specialist tested the account of the temporary worker. The tester was able to access the URLs of additional secure servers from the WebVPN user account of the temporary worker.

What did the junior network engineer configure incorrectly?



- A. The ACL was configured incorrectly.
- B. The ACL was applied incorrectly or was not applied.
- C. Network browsing was not restricted on the temporary worker group policy.
- D. Network browsing was not restricted on the temporary worker user policy.

Correct Answer: B

### QUESTION 3

Match the Diffie-Hellman group on the left with the correct application on the right. (Not all items will be used.)

Select and Place:

Match the Diffie-Hellman group on the left with the correct application on the right. (Not all items will be used.)

D-H group 1	default for remote-access VPN—Aggressive mode
D-H group 2	recommended for remote-access VPN with PDAs
D-H group 3	recommended for remote-access VPN using AES-192
D-H group 5	
D-H group 7	default for site-to-site VPN—certificate-based

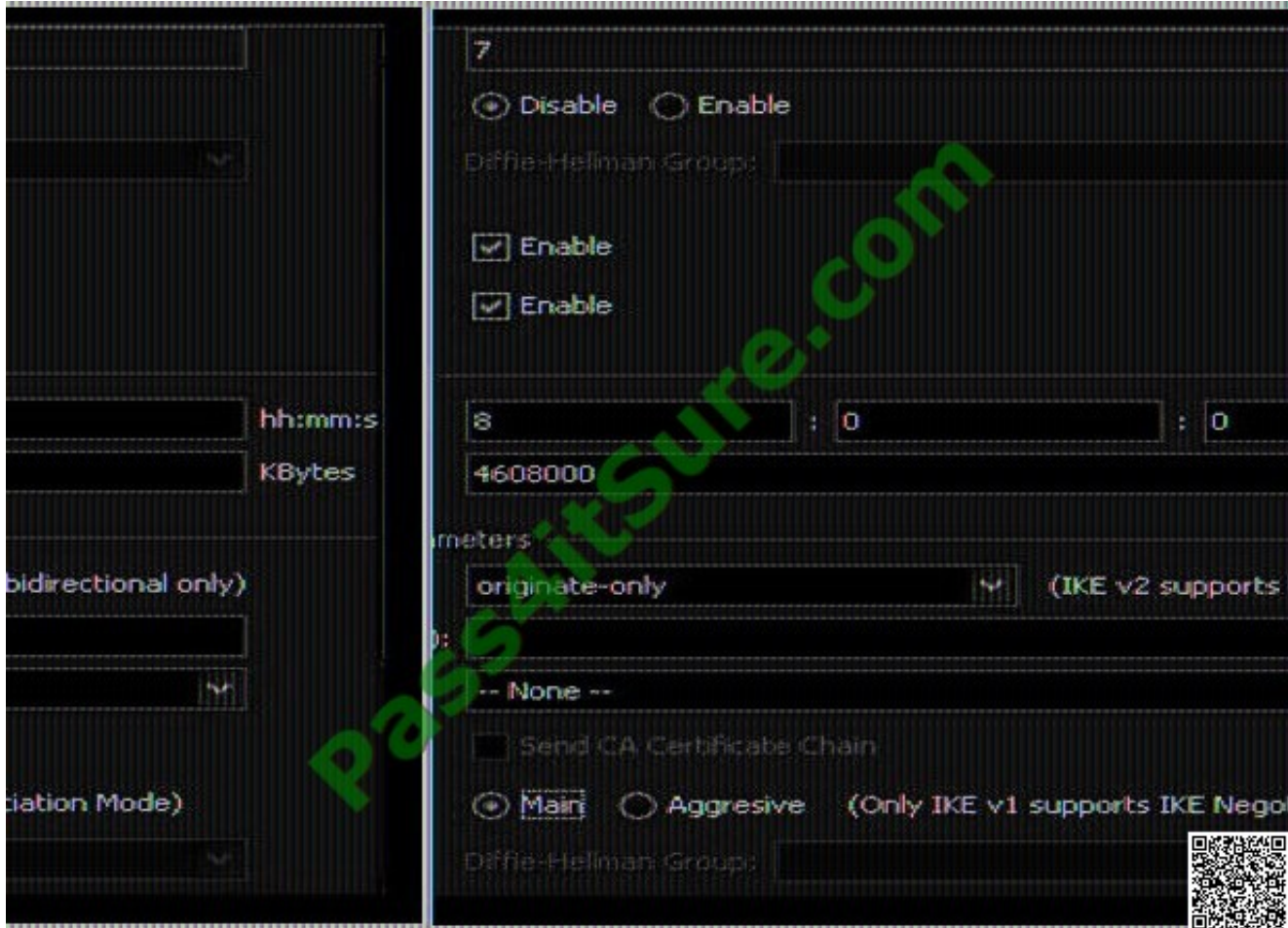
Correct Answer:

Match the Diffie-Hellman group on the left with the correct application on the right. (Not all items will be used.)

D-H group 1	D-H group 2
	D-H group 7
	D-H group 5
	D-H group 3

**QUESTION 4**

Refer to the exhibit.



While configuring a site-to-site VPN tunnel, a new NOC engineer encounters the Reverse Route Injection parameter.

Assuming that static routes are redistributed by the Cisco ASA to the IGP, what effect does enabling Reverse Route Injection on the local Cisco ASA have on a configuration?

- A. The local Cisco ASA advertises its default routes to the distant end of the site-to-site VPN tunnel.
- B. The local Cisco ASA advertises routes from the dynamic routing protocol that is running on the local Cisco ASA to the distant end of the site-to-site VPN tunnel.
- C. The local Cisco ASA advertises routes that are at the distant end of the site-to-site VPN tunnel.
- D. The local Cisco ASA advertises routes that are on its side of the site-to-site VPN tunnel to the distant end of the site-to-site VPN tunnel.

Correct Answer: C

**QUESTION 5**



Refer to the exhibit.

```
tunnel-group BASIC-ANYCONNECT-PROFILE general-attributes
 authentication-server-group MY-RADIUS-SVRS
 secondary-authentication-server-group MY-LDAP-SVRS
!
tunnel-group BASIC-ANYCONNECT-PROFILE webvpn-attributes
 authentication aaa
```



Given the example that is shown, what can you determine?

- A. Users are required to perform RADIUS or LDAP authentication when connecting with the Cisco AnyConnect client.
- B. Users are required to perform AAA authentication when connecting via WebVPN.
- C. Users are required to perform double AAA authentication.
- D. The user access identity is prefilled at login, requiring users to enter only their password.

Correct Answer: C

[Latest 642-647 Dumps](#)

[642-647 Study Guide](#)

[642-647 Exam Questions](#)



To Read the [Whole Q&As](#), please purchase the [Complete Version](#) from [Our website](#).

## Try our product !

100% Guaranteed Success

100% Money Back Guarantee

365 Days Free Update

Instant Download After Purchase

24x7 Customer Support

Average 99.9% Success Rate

More than 800,000 Satisfied Customers Worldwide

Multi-Platform capabilities - [Windows](#), [Mac](#), [Android](#), [iPhone](#), [iPod](#), [iPad](#), [Kindle](#)

We provide exam PDF and VCE of Cisco, Microsoft, IBM, CompTIA, Oracle and other IT Certifications. You can view Vendor list of All Certification Exams offered:

<https://www.pass4itsure.com/allproducts>

## Need Help

Please provide as much detail as possible so we can best assist you.

To update a previously submitted ticket:



 <p><b>One Year Free Update</b> Free update is available within One Year after your purchase. After One Year, you will get 50% discounts for updating. And we are proud to boast a 24/7 efficient Customer Support system via Email.</p>	 <p><b>Money Back Guarantee</b> To ensure that you are spending on quality products, we provide 100% money back guarantee for 30 days from the date of purchase.</p>	 <p><b>Security &amp; Privacy</b> We respect customer privacy. We use McAfee's security service to provide you with utmost security for your personal information &amp; peace of mind.</p>
---	---	--

Any charges made through this site will appear as Global Simulators Limited.

All trademarks are the property of their respective owners.

Copyright © pass4itsure, All Rights Reserved.