



642-627^{Q&As}

Implementing Cisco Intrusion Prevention System v7.0

Pass Cisco 642-627 Exam with 100% Guarantee

Free Download Real Questions & Answers **PDF** and **VCE** file from:

<https://www.pass4itsure.com/642-627.html>

100% Passing Guarantee
100% Money Back Assurance

Following Questions and Answers are all new published by Cisco
Official Exam Center

-  **Instant Download** After Purchase
-  **100% Money Back** Guarantee
-  **365 Days** Free Update
-  **800,000+** Satisfied Customers



**QUESTION 1**

Which two switching-based mechanisms are used to deploy high availability IPS using multiple Cisco IPS appliances? (Choose two.)

- A. Spanning Tree-based HA
- B. HSRP-basedHA
- C. EtherChannel-based HA
- D. VRRP-basedHA

Correct Answer: AC

When network switches are used to provide High Availability you have two options

EtherChannel based HA STP based HA

QUESTION 2

When setting up a Cisco IPS appliance in promiscuous mode, which Cisco Catalyst switch command is used to display information about all SPAN and remote SPAN sessions on the switch?

- A. show span
- B. show sessions
- C. show interface
- D. show monitor

Correct Answer: D

show monitor session

To display information about the ERSPAN, SPAN and RSPAN sessions, use the show monitor session command in user EXEC mode.

show monitor session [range session-range | local | remote | all | session] show monitor session [erspan-destination | erspan-source | egress replication-mode capability| detail]

QUESTION 3

What must be configured to enable Cisco IPS appliance reputation filtering and global correlation?

- A. DNS server(s) IP address
- B. full sensor based network participation
- C. trusted hosts settings D. external product interfaces settings



Correct Answer: A

http://www.cisco.com/en/US/docs/security/ips/7.0/configuration/guide/ime/ime_collaboration.html

Global Correlation Requirements

Global correlation has the following requirements:

?alid license

You must have a valid sensor license for global correlation features to function. You can still configure and display statistics for the global correlation features, but the global correlation databases are cleared and no updates are attempted.

Once you install a valid license, the global correlation features are reactivated.

?gree to network participation disclaimer

?xternal connectivity for sensor and a DNS server

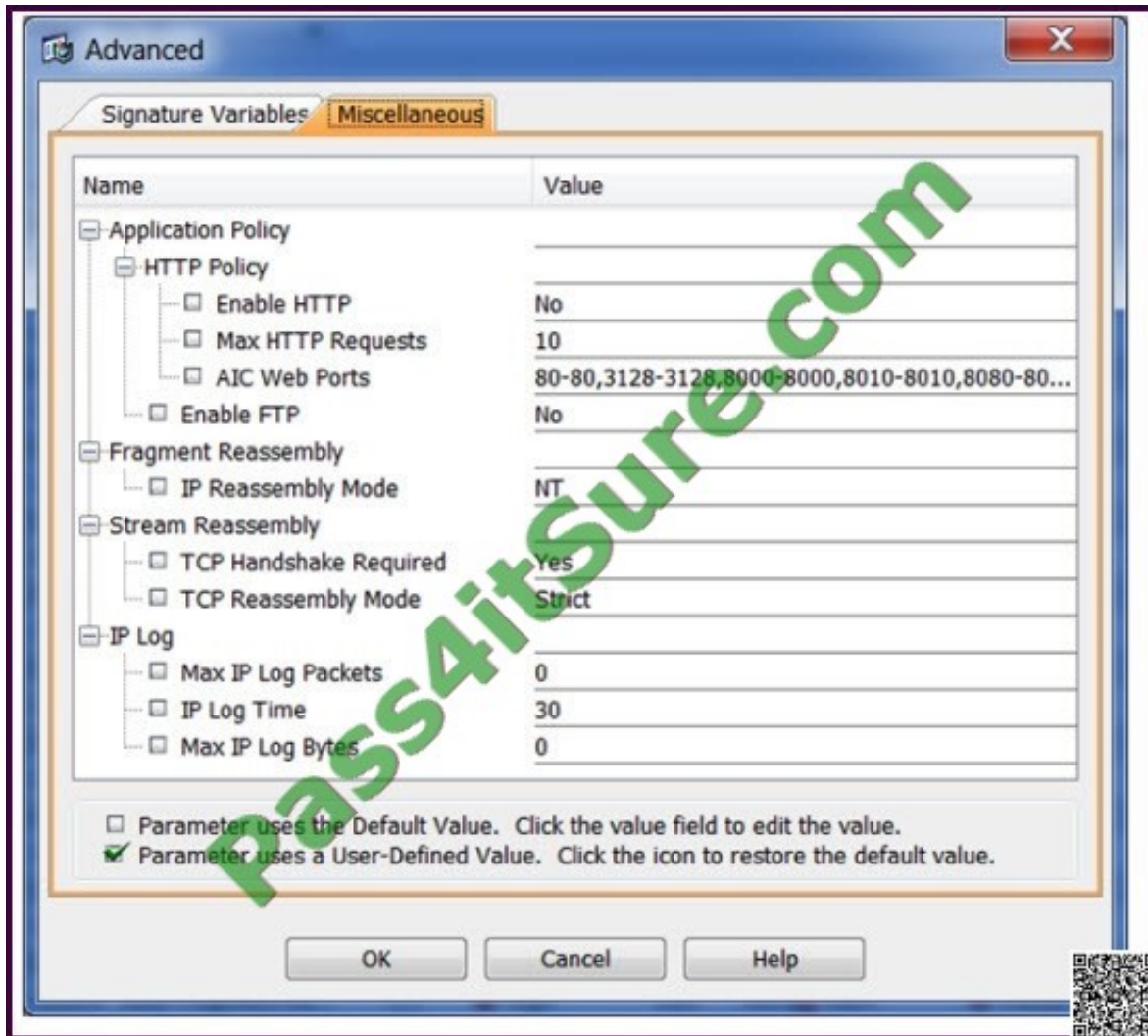
The global correlation features of IPS 7.0 require the sensor to connect to the Cisco SensorBase Network.

Domain name resolution is also required for these features to function. You can either configure the sensor to connect through an HTTP proxy server that has a DNS client running on it, or you can assign an Internet routable address to the

management interface of the sensor and configure the sensor to use a DNS server. In IPS 7.0 the HTTP proxy and DNS servers are used only by the global correlation features.

QUESTION 4

Refer to the exhibit.



Which statement is true?

- A. The Service HTTP engine is disabled.
- B. The Cisco IPS sensor will send an alert if an attacker makes more than 10 HTTP requests to a single target server.
- C. The IP logging feature has been disabled by setting the Max IP Log Packets and Max IP Log Bytes to 0.
- D. Application inspection and control for HTTP is disabled.
- E. Automatic IP Log actions will capture the specified traffic for 30 minutes.

Correct Answer: D

QUESTION 5

Select and Place:



Drag the IPS user account on the left to match the correct privilege shown on the right.

administrator	may edit signatures
operator	may modify own password
viewer	may assign monitoring interfaces to a virtual sensor
service	may access the native operating system shell

Correct Answer:

Drag the IPS user account on the left to match the correct privilege shown on the right.

	operator
	viewer
	administrator
	service

[642-627 PDF Dumps](#)

[642-627 VCE Dumps](#)

[642-627 Study Guide](#)



To Read the [Whole Q&As](#), please purchase the [Complete Version](#) from [Our website](#).

Try our product !

100% Guaranteed Success

100% Money Back Guarantee

365 Days Free Update

Instant Download After Purchase

24x7 Customer Support

Average 99.9% Success Rate

More than 800,000 Satisfied Customers Worldwide

Multi-Platform capabilities - [Windows](#), [Mac](#), [Android](#), [iPhone](#), [iPod](#), [iPad](#), [Kindle](#)

We provide exam PDF and VCE of Cisco, Microsoft, IBM, CompTIA, Oracle and other IT Certifications. You can view Vendor list of All Certification Exams offered:

<https://www.pass4itsure.com/allproducts>

Need Help

Please provide as much detail as possible so we can best assist you.

To update a previously submitted ticket:



 <p>One Year Free Update Free update is available within One Year after your purchase. After One Year, you will get 50% discounts for updating. And we are proud to boast a 24/7 efficient Customer Support system via Email.</p>	 <p>Money Back Guarantee To ensure that you are spending on quality products, we provide 100% money back guarantee for 30 days from the date of purchase.</p>	 <p>Security & Privacy We respect customer privacy. We use McAfee's security service to provide you with utmost security for your personal information & peace of mind.</p>
---	---	--

Any charges made through this site will appear as Global Simulators Limited.

All trademarks are the property of their respective owners.

Copyright © pass4itsure, All Rights Reserved.