



642-035^{Q&As}

Troubleshooting Cisco Data Center Unified Computing

Pass Cisco 642-035 Exam with 100% Guarantee

Free Download Real Questions & Answers **PDF** and **VCE** file from:

<https://www.pass4itsure.com/642-035.html>

100% Passing Guarantee
100% Money Back Assurance

Following Questions and Answers are all new published by Cisco
Official Exam Center

-  **Instant Download** After Purchase
-  **100% Money Back** Guarantee
-  **365 Days** Free Update
-  **800,000+** Satisfied Customers



**QUESTION 1**

When a service profile is disassociated from a server, what happens to the identity and connectivity information for the server?

- A. It is cleared and set to the default that was setup initially by the first configuration.
- B. It is maintained and can be reused.
- C. It is reset to factory defaults.
- D. It uses master service profile parameters.
- E. It takes parameters of other servers in the service profile.

Correct Answer: C

QUESTION 2

Which option describes why the service profiles do not inherit changes from the template?

- A. The service profile is not compatible with the changes.
- B. The changes to the template have not been committed.
- C. It is an initial template.
- D. The service profile has disabled inheritance.

Correct Answer: C

QUESTION 3

A customer is trying to boot an operating system installed on a Cisco UCS B-Series blade server after a RAID1 cluster migration. The RAID LUN remains in inactive state during and after the service profile association and the server does not boot. What is the cause of this problem?

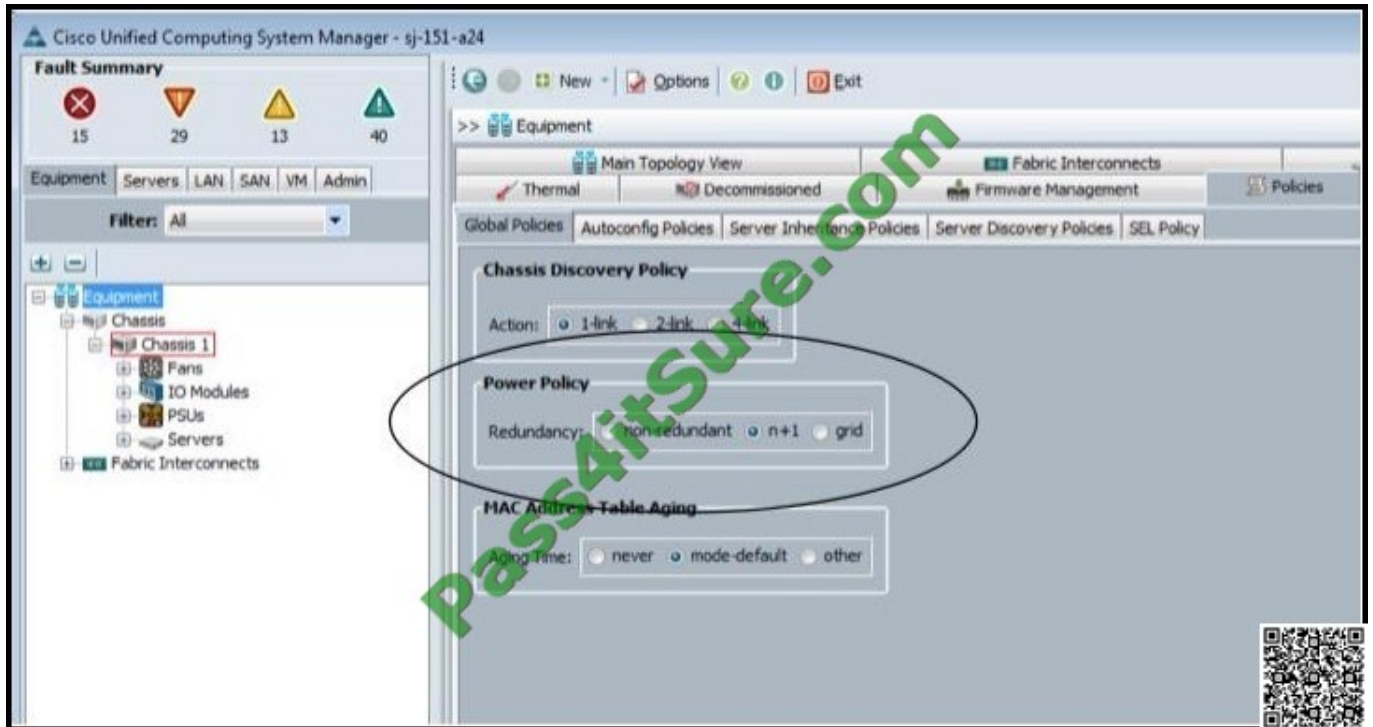
- A. RAID1 is not supported in cluster migration mode on a Cisco UCS B-Series blade server.
- B. The local disk configuration policy in the service profile on the server is configured with Any Configuration mode rather than RAID1.
- C. The server needs to be booted via SAN in cluster migration to support RAID1.
- D. The Cisco UCS B-Series blade server has older firmware that needs to be updated first.

Correct Answer: B

QUESTION 4



Refer to the exhibit.



Which type of power policy is shown when referring to a Cisco UCS environment?

- A. chassis
- B. blade server
- C. fabric interconnect
- D. global
- E. switch

Correct Answer: D

QUESTION 5



Instructions

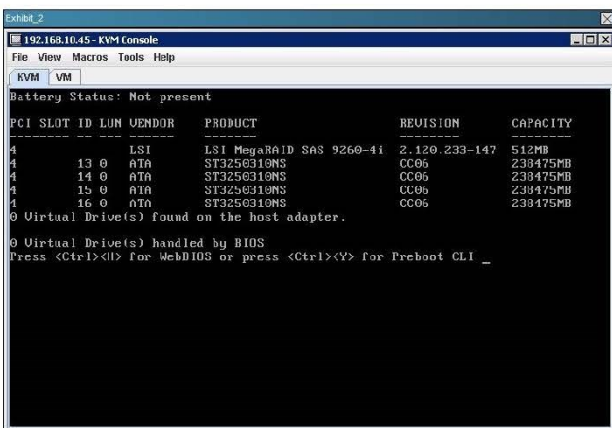
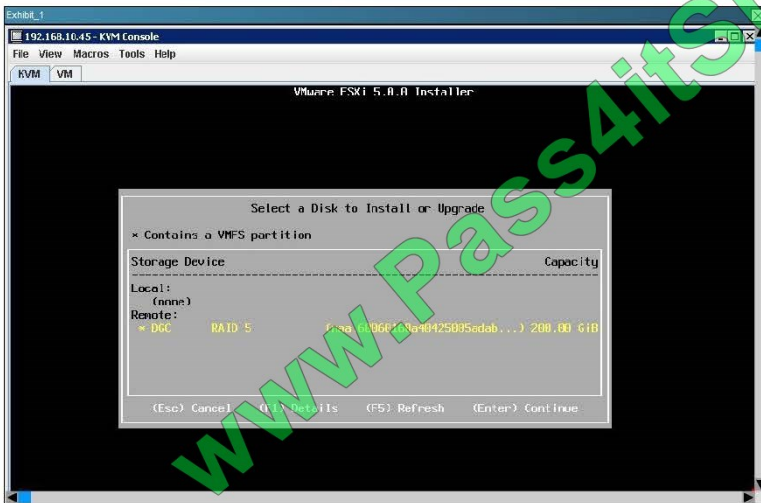
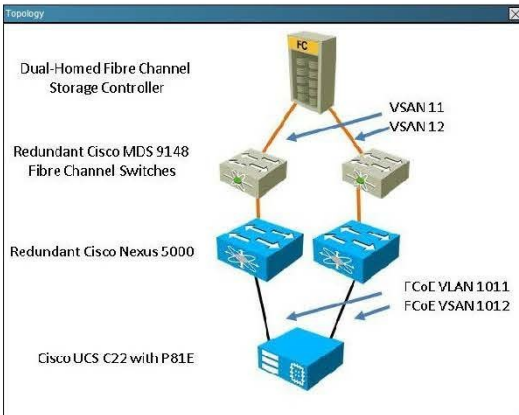
- THIS TASK DOES NOT REQUIRE DEVICE CONFIGURATION.
- Before beginning the questions, carefully read the information in the Scenario tab and familiarize yourself with the network topology.
- To access the multiple-choice questions, click on the numbered boxes on the left of the top panel.
- There are four multiple-choice questions with this task. Be sure to answer all four questions before clicking the Next button.
- Use the tabs at the bottom of the question to navigate between the Topology and question-specific Exhibits. Exhibit_1 maps to Question 1, and so on.

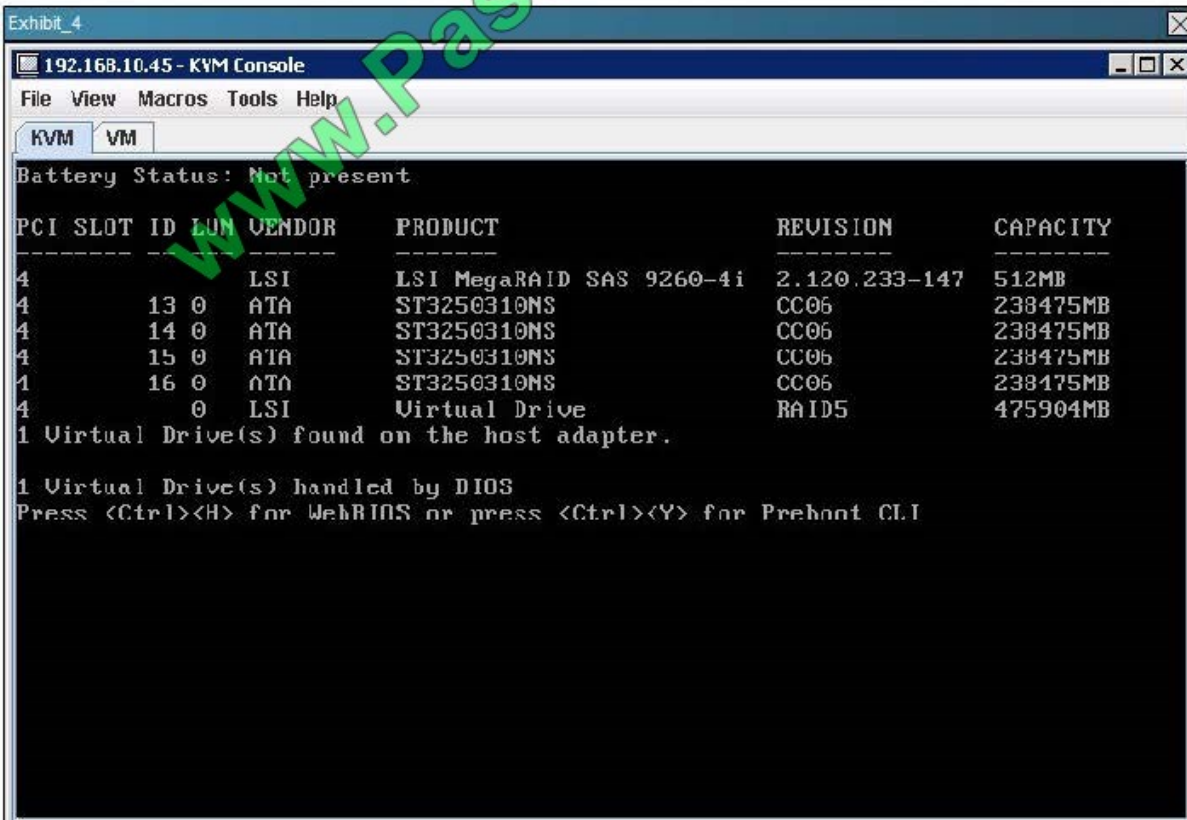
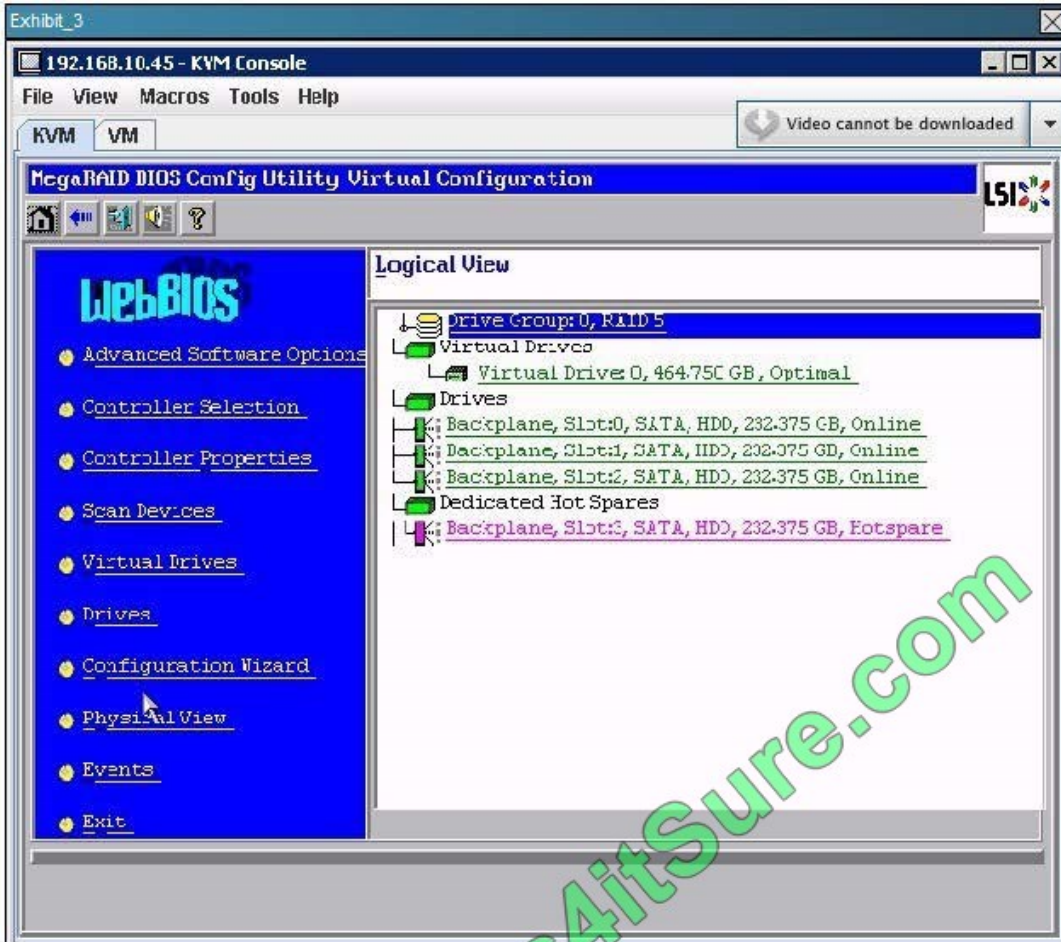
Scenario

Your customer has purchased a Cisco UCS C22 M2 server equipped with an LSI MegaRAID 9260-4i, four SAS hard drives, and a Cisco UCS P81E VIC.

Because Fibre Channel storage is at a premium at this data center, the customer decides to boot VMware ESX 5.0 from local storage and attach to the VMs on a VMFS LUN on a Fibre Channel storage controller with a large RAID array.

The customer is encountering issues connecting to local storage, and you are called on-site to get the server into production.







Point and Shoot:

Questions

1 Refer to Exhibit_4. Given the information on this message you see during POST, what

2 write cache policy would you recommend to your customer?

3 write-through

4 no write cache

write-back

write-forward

Hot Area:

Questions

1 Refer to Exhibit_4. Given the information on this message you see during POST, what

2 write cache policy would you recommend to your customer?

3 write-through

4 no write cache

write-back

write-forward

Correct Answer:

Questions

1 Refer to Exhibit_4. Given the information on this message you see during POST, what

2 write cache policy would you recommend to your customer?

3 write-through

4 no write cache

write-back

write-forward

[642-035 PDF Dumps](#)

[642-035 VCE Dumps](#)

[642-035 Braindumps](#)



To Read the [Whole Q&As](#), please purchase the [Complete Version](#) from [Our website](#).

Try our product !

100% Guaranteed Success

100% Money Back Guarantee

365 Days Free Update

Instant Download After Purchase

24x7 Customer Support

Average 99.9% Success Rate

More than 800,000 Satisfied Customers Worldwide

Multi-Platform capabilities - [Windows](#), [Mac](#), [Android](#), [iPhone](#), [iPod](#), [iPad](#), [Kindle](#)

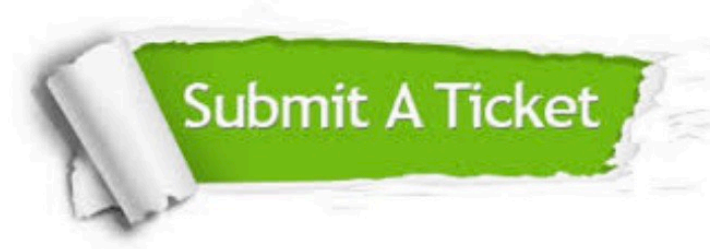
We provide exam PDF and VCE of Cisco, Microsoft, IBM, CompTIA, Oracle and other IT Certifications. You can view Vendor list of All Certification Exams offered:

<https://www.pass4itsure.com/allproducts>

Need Help

Please provide as much detail as possible so we can best assist you.

To update a previously submitted ticket:



 <p>One Year Free Update Free update is available within One Year after your purchase. After One Year, you will get 50% discounts for updating. And we are proud to boast a 24/7 efficient Customer Support system via Email.</p>	 <p>Money Back Guarantee To ensure that you are spending on quality products, we provide 100% money back guarantee for 30 days from the date of purchase.</p>	 <p>Security & Privacy We respect customer privacy. We use McAfee's security service to provide you with utmost security for your personal information & peace of mind.</p>
---	---	--

Any charges made through this site will appear as Global Simulators Limited.

All trademarks are the property of their respective owners.

Copyright © pass4itsure, All Rights Reserved.