



# 642-035<sup>Q&As</sup>

Troubleshooting Cisco Data Center Unified Computing

## Pass Cisco 642-035 Exam with 100% Guarantee

Free Download Real Questions & Answers **PDF** and **VCE** file from:

<https://www.pass4itsure.com/642-035.html>

100% Passing Guarantee  
100% Money Back Assurance

Following Questions and Answers are all new published by Cisco  
Official Exam Center

-  **Instant Download** After Purchase
-  **100% Money Back** Guarantee
-  **365 Days** Free Update
-  **800,000+** Satisfied Customers



**QUESTION 1**

Which feature on the Cisco IMC GUI allows you to view the last boot post operation?

- A. Firmware Management tab
- B. Bootstrap Process Recording
- C. Crash Recording
- D. Trusted Platform Module

Correct Answer: B

---

**QUESTION 2**

You are troubleshooting an FCoE SAN boot issue on a Cisco UCS C240 M3 server with a VIC 1225. Which two of these represent the correct way to bind VSAN 11 to interface vfc5 attached to interface Ethernet 1/5? (Choose two.)

- A. 5548UP(config)# int vfc 5 5548UP(config-if)# bind interface Ethernet1/5 vsan 11
- B. 5548UP(config)# vsan database 5548UP(config-vsan-db)# vsan 11 interface vfc5
- C. 5548UP(config)# interface Ethernet1/5 5548UP(config-if)# bind vsan 11
- D. 5548UP(config)# vsan database 5548UP(config-vsan-db)# bind interface vfc5 vsan 11
- E. 5548UP(config)# vsan database 5548UP(config-vsan-db)# interface vfc5 vsan 11
- F. 5548UP(config)# vsan database 5548UP(config-vsan-db)# interface Ethernet1/5 vsan 11

Correct Answer: AB

---

**QUESTION 3**

You have remote CLI access using SSH to the Cisco UCS equipment of a customer. Which command must you use to check for system errors in the UCS domain?

- A. show fault
- B. show cluster
- C. show chassis
- D. show failover

Correct Answer: A

---

**QUESTION 4**



Instructions

- THIS TASK DOES NOT REQUIRE DEVICE CONFIGURATION.
- Before beginning the questions, carefully read the information in the Scenario tab and familiarize yourself with the network topology.
- To access the multiple-choice questions, click on the numbered boxes on the left of the top panel.
- There are four multiple-choice questions with this task. Be sure to answer all four questions before clicking the Next button.
- Use the tabs at the bottom of the question to navigate between the Topology and question-specific Exhibits. Exhibit\_1 maps to Question 1, and so on.

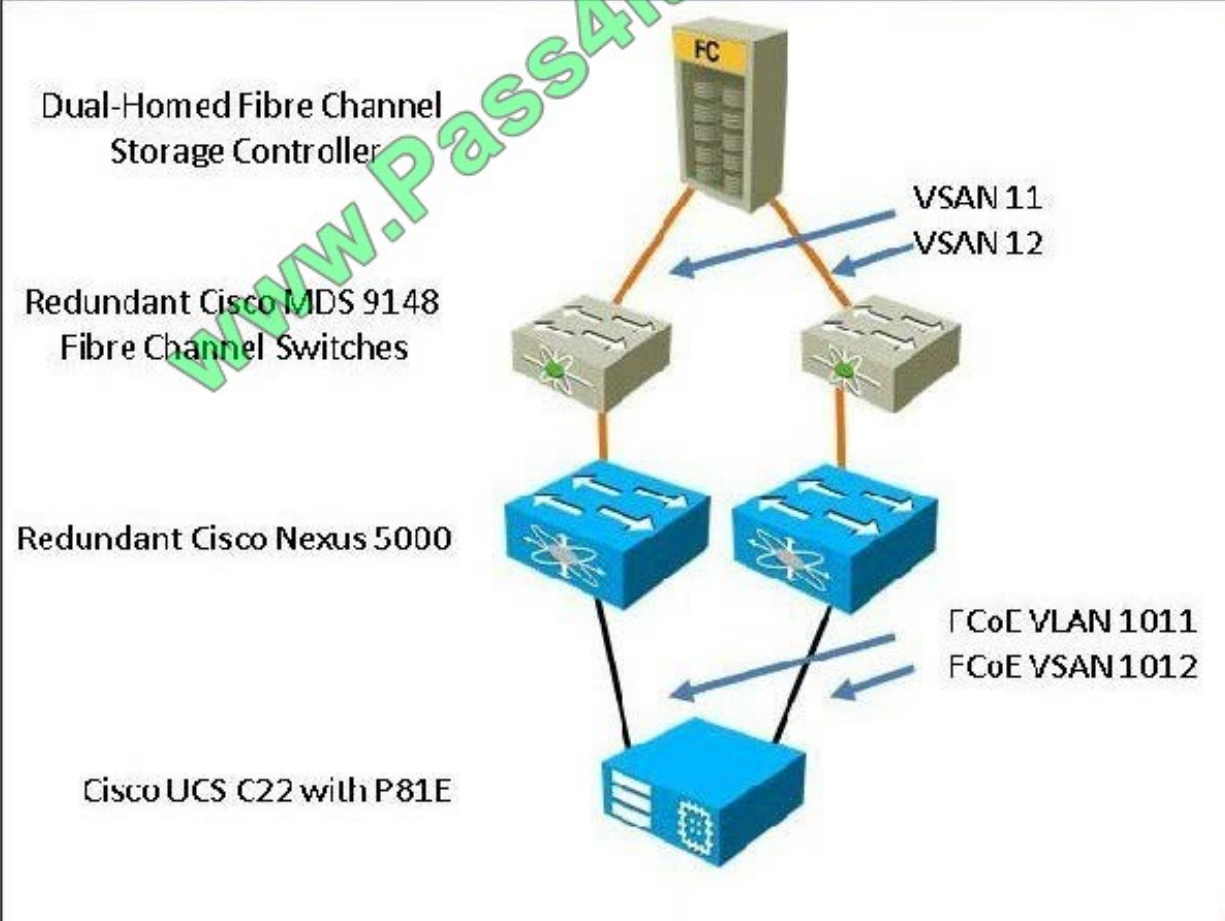
Scenario

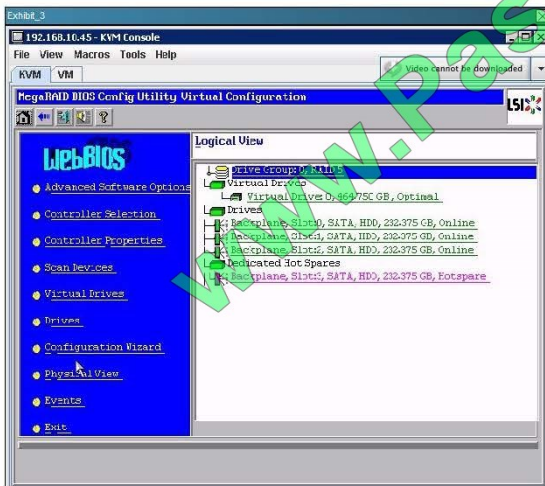
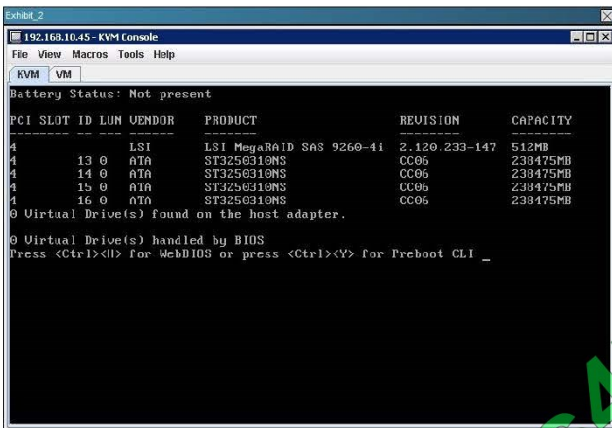
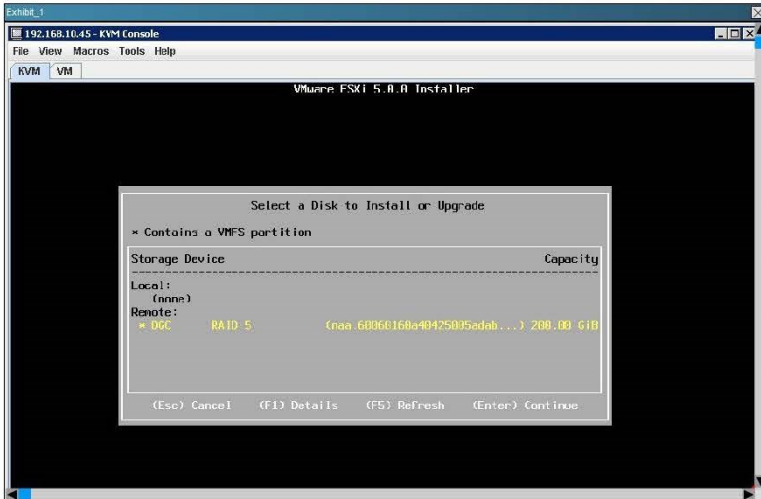
Your customer has purchased a Cisco UCS C22 M2 server equipped with an LSI MegaRAID 9260-4i, four SAS hard drives, and a Cisco UCS P81E VIC.

Because Fibre Channel storage is at a premium at this data center, the customer decides to boot VMware ESXi 5.0 from local storage and attach to the VMs on a VMFS LUN on a Fibre Channel storage controller with a large RAID array.

The customer is encountering issues connecting to local storage, and you are called on-site to get the server into production.

Topology









```
Exhibit_4
192.168.10.45 - KVM Console
File View Macros Tools Help
KVM VM
Battery Status: Not present

PCI SLOT ID LUN VENDOR PRODUCT REVISION CAPACITY
-----
4          13 0 ATA ST3250310NS CC06 238475MB
4          14 0 ATA ST3250310NS CC06 238475MB
4          15 0 ATA ST3250310NS CC06 238475MB
4          16 0 ATA ST3250310NS CC06 238475MB
4          0 LSI Virtual Drive RAID5 475904MB
1 Virtual Drive(s) found on the host adapter.

1 Virtual Drive(s) handled by BIOS
Press <Ctrl><H> for WebBIOS or press <Ctrl><Y> for Preboot CLI
```

Point and Shoot:

Questions

- 1 You have rebooted the server several times and loaded the VMware ESXi installer, but there is still no local boot device.
- 2
- 3 Refer to Exhibit\_2 and examine the message that occurs each time during POST.
- 4 How is the controller currently configured?  
 With four disks installed, the LSI MegaRAID 9260i defaults to RAID 6 for maximum fault tolerance.  
 With four disks installed, the LSI MegaRAID 9260i defaults to RAID 5 for fault tolerance and higher capacity.  
 With four disks installed, the LSI MegaRAID 9260i defaults to RAID 10 for fault tolerance and maximum I/O performance.  
 With four disks installed, the LSI MegaRAID 9260i defaults to no fault-tolerant configuration.

Hot Area:



Questions

1 You have rebooted the server several times and loaded the VMware ESXi installer, but there is still no local boot device.

2

3

4 Refer to Exhibit\_2 and examine the message that occurs each time during POST.

How is the controller currently configured?

- With four disks installed, the LSI MegaRAID 9260i defaults to RAID 6 for maximum fault tolerance.
- With four disks installed, the LSI MegaRAID 9260i defaults to RAID 5 for fault tolerance and higher capacity.
- With four disks installed, the LSI MegaRAID 9260i defaults to RAID 10 for fault tolerance and maximum I/O performance.
- With four disks installed, the LSI MegaRAID 9260i defaults to no fault-tolerant configuration.

Correct Answer:

Questions

1 You have rebooted the server several times and loaded the VMware ESXi installer, but there is still no local boot device.

2

3

4 Refer to Exhibit\_2 and examine the message that occurs each time during POST.

How is the controller currently configured?

- With four disks installed, the LSI MegaRAID 9260i defaults to RAID 6 for maximum fault tolerance.
- With four disks installed, the LSI MegaRAID 9260i defaults to RAID 5 for fault tolerance and higher capacity.
- With four disks installed, the LSI MegaRAID 9260i defaults to RAID 10 for fault tolerance and maximum I/O performance.
- With four disks installed, the LSI MegaRAID 9260i defaults to no fault-tolerant configuration.

### QUESTION 5

What is the maximum number of boot targets for an FCoE vHBA on a Cisco UCS C-Series server?

- A. 1
- B. 2
- C. 3
- D. 4

Correct Answer: D



VCE & PDF

Pass4itSure.com

<https://www.pass4itsure.com/642-035.html>

2022 Latest pass4itsure 642-035 PDF and VCE dumps Download

---

[Latest 642-035 Dumps](#)

[642-035 Study Guide](#)

[642-035 Braindumps](#)



To Read the [Whole Q&As](#), please purchase the [Complete Version](#) from [Our website](#).

## Try our product !

100% Guaranteed Success

100% Money Back Guarantee

365 Days Free Update

Instant Download After Purchase

24x7 Customer Support

Average 99.9% Success Rate

More than 800,000 Satisfied Customers Worldwide

Multi-Platform capabilities - [Windows](#), [Mac](#), [Android](#), [iPhone](#), [iPod](#), [iPad](#), [Kindle](#)

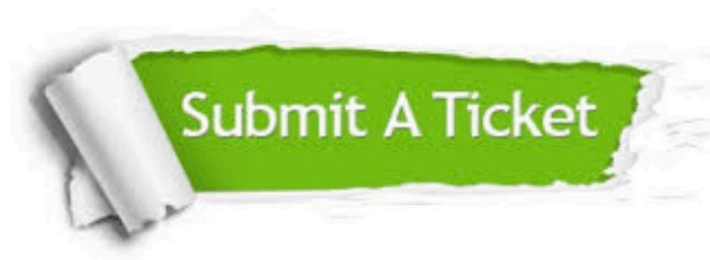
We provide exam PDF and VCE of Cisco, Microsoft, IBM, CompTIA, Oracle and other IT Certifications. You can view Vendor list of All Certification Exams offered:

<https://www.pass4itsure.com/allproducts>

## Need Help

Please provide as much detail as possible so we can best assist you.

To update a previously submitted ticket:



 <p><b>One Year Free Update</b> Free update is available within One Year after your purchase. After One Year, you will get 50% discounts for updating. And we are proud to boast a 24/7 efficient Customer Support system via Email.</p>	 <p><b>Money Back Guarantee</b> To ensure that you are spending on quality products, we provide 100% money back guarantee for 30 days from the date of purchase.</p>	 <p><b>Security &amp; Privacy</b> We respect customer privacy. We use McAfee's security service to provide you with utmost security for your personal information &amp; peace of mind.</p>
---	---	--

Any charges made through this site will appear as Global Simulators Limited.

All trademarks are the property of their respective owners.

Copyright © pass4itsure, All Rights Reserved.