



600-660^{Q&As}

Implementing Cisco Application Centric Infrastructure - Advanced

Pass Cisco 600-660 Exam with 100% Guarantee

Free Download Real Questions & Answers **PDF** and **VCE** file from:

<https://www.pass4itsure.com/600-660.html>

100% Passing Guarantee
100% Money Back Assurance

Following Questions and Answers are all new published by Cisco
Official Exam Center

-  **Instant Download** After Purchase
-  **100% Money Back** Guarantee
-  **365 Days** Free Update
-  **800,000+** Satisfied Customers





QUESTION 1

DRAG DROP

An engineer deploys a Cisco ACI Multi-Site Orchestrator for the first time. Drag and drop the actions from the left into the steps on the right to add a site and deploy new Cisco ACI objects to the fabric. Not all actions are used.

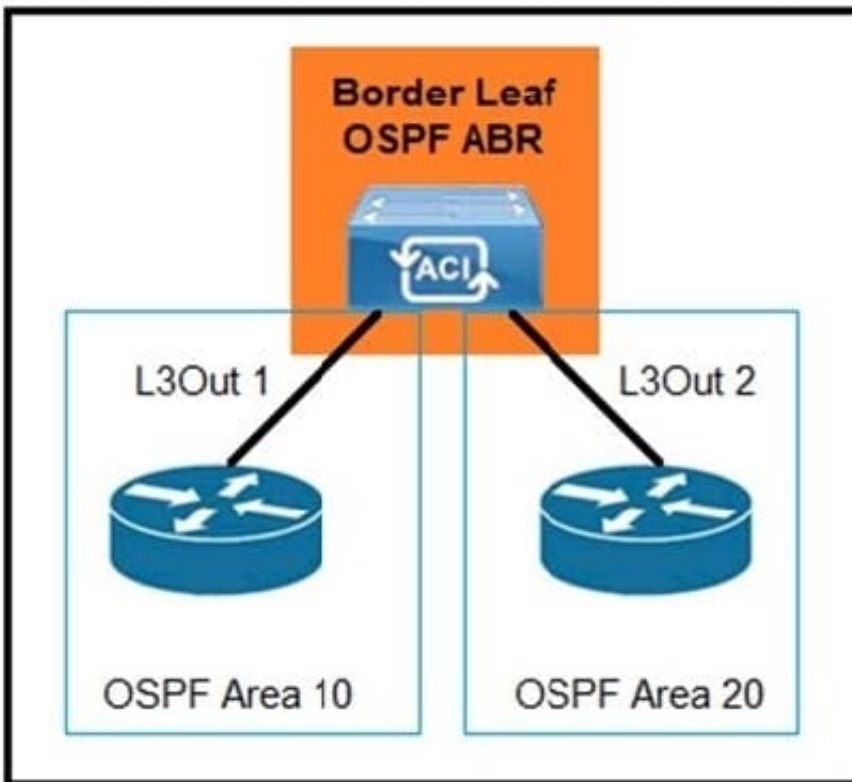
Select and Place:

Create a template	Step 1
Configure infrastructure	Step 2
Create and associate a tenant	Step 3
Configure multicast routing	Step 4
Define a schema	Step 5
Create a site	

Correct Answer:

	Configure infrastructure
	Create and associate a tenant
	Define a schema
Configure multicast routing	Create a template
	Create a site

QUESTION 2



Refer to the exhibit. Which configuration must be implemented to allow intra-VRF transit routing between the two external routers?

- A. Deploy both areas under the same L3Out policy
- B. Change one of the areas to area 0
- C. Configure OSPF virtual links
- D. Modify L3Out 1 to use the same OSPF area as L3Out 2

Correct Answer: A

QUESTION 3

DRAG DROP

An engineer must migrate servers from a legacy data center infrastructure to a Cisco ACI fabric. Drag and drop the steps from the left into the order that they must be completed on the right to ensure the least amount of downtime.

Select and Place:



Answer Area

Extend Layer 2 connectivity from the legacy infrastructure to Cisco ACI. Move servers from the legacy infrastructure to Cisco ACI leaf switches

Shut SVI on the legacy infrastructure and enable bridge domain unicast routing on Cisco ACI

Decommission the legacy infrastructure

Configure Cisco ACI: Define access policies, tenants, and bridge domain with unicast routing disabled. Map each VLAN to an EPG.

Step 1

Step 2

Step 3

Step 4

Correct Answer:



Answer Area

- Shut SVI on the legacy infrastructure and enable bridge domain unicast routing on Cisco ACI
- Configure Cisco ACI: Define access policies, tenants, and bridge domain with unicast routing disabled. Map each VLAN to an EPG.
- Extend Layer 2 connectivity from the legacy infrastructure to Cisco ACI. Move servers from the legacy infrastructure to Cisco ACI leaf switches
- Decommission the legacy infrastructure

QUESTION 4

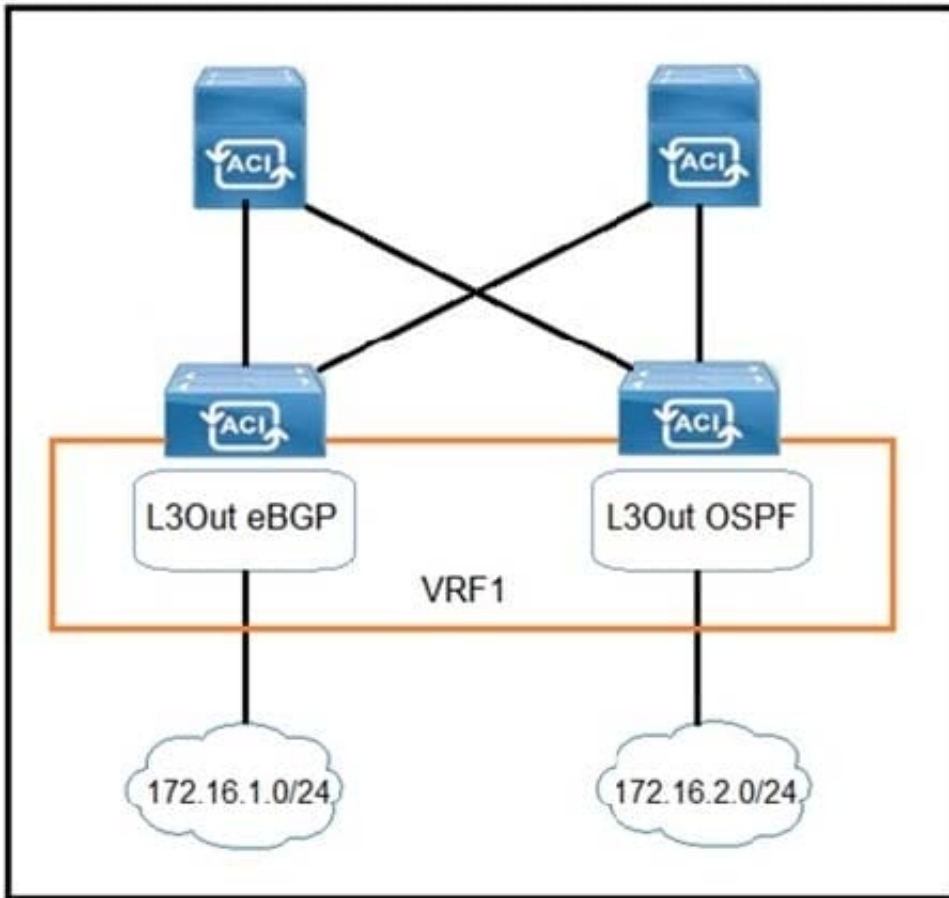
Which firewall connection allows for the integration of service nodes in transparent mode with a Cisco ACI Multi-Pod setup?

- A. active-standby mode across pods
- B. active-active mode per pods for communication between internal endpoints
- C. active-standby mode per pods for communication between endpoints and external networks
- D. active-active mode across pods

Correct Answer: A

Reference: <https://www.cisco.com/c/en/us/solutions/collateral/data-center-virtualization/application-centric-infrastructure/white-paper-c11-739571.html> (table 1)

QUESTION 5



Refer to the exhibit. Which configuration must be implemented on L3Out EBGP to advertise out of the fabric 172.16.2.0/24 network that is learned from L3Out OSPF?

- A.
- B.
- C.
- D.

Correct Answer: A

[Latest 600-660 Dumps](#)

[600-660 PDF Dumps](#)

[600-660 Brindumps](#)