



600-660^{Q&As}

Implementing Cisco Application Centric Infrastructure - Advanced

Pass Cisco 600-660 Exam with 100% Guarantee

Free Download Real Questions & Answers **PDF** and **VCE** file from:

<https://www.pass4itsure.com/600-660.html>

100% Passing Guarantee
100% Money Back Assurance

Following Questions and Answers are all new published by Cisco
Official Exam Center

- ⚙️ **Instant Download** After Purchase
- ⚙️ **100% Money Back** Guarantee
- ⚙️ **365 Days** Free Update
- ⚙️ **800,000+** Satisfied Customers



**QUESTION 1****DRAG DROP**

An engineer deploys a Cisco ACI Multi-Site Orchestrator for the first time. Drag and drop the actions from the left into the steps on the right to add a site and deploy new Cisco ACI objects to the fabric. Not all actions are used.

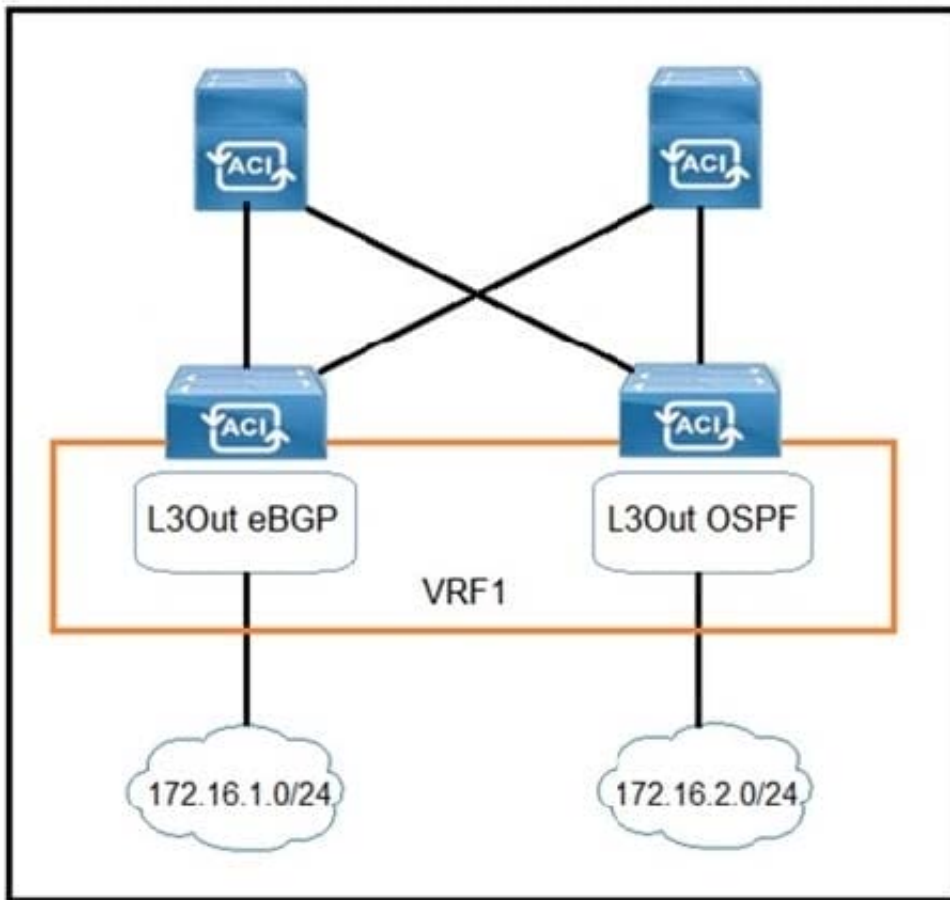
Select and Place:

Create a template	Step 1
Configure infrastructure	Step 2
Create and associate a tenant	Step 3
Configure multicast routing	Step 4
Define a schema	Step 5
Create a site	

Correct Answer:

	Configure infrastructure
	Create and associate a tenant
	Define a schema
Configure multicast routing	Create a template
	Create a site

QUESTION 2



Refer to the exhibit. Which configuration must be implemented on L3Out EBGP to advertise out of the fabric 172.16.2.0/24 network that is learned from L3Out OSPF?

- A.
- B.
- C.
- D.

Correct Answer: A

QUESTION 3

DRAG DROP

Drag and drop the tenant implementation designs from the left onto the outcomes of the design when a greenfield Cisco ACI fabric is deployed on the right.

Select and Place:



Answer Area

VRF configured in common tenant; BDs and EPGs configured in dedicated tenants.

VRF and BDs configured in common tenant; EPGs configured in user tenants.

VRF, BD, and EPG configured in common tenant.

VRF, BD, and EPG configured in user tenants.

One organization without RBAC requirements owns all of the configuration.

Different organizations can have overlapping subnets.

Organizations use different tenants and share the same subnets.

Each organization has access only to dedicated resources, tied into RBAC rules.

Correct Answer:

Answer Area

VRF, BD, and EPG configured in user tenants.

VRF, BD, and EPG configured in common tenant.

VRF configured in common tenant; BDs and EPGs configured in dedicated tenants.

VRF and BDs configured in common tenant; EPGs configured in user tenants.

QUESTION 4

What does the VXLAN source port add to the overlay packet forwarding when it uses the hash of Layer 2, Layer 3, and Layer 4 headers of the inner packet?

- A. ECMP
- B. TCP optimization
- C. disabled fragmentation



D. jumbo frames

Correct Answer: A

Reference: <https://www.cisco.com/c/en/us/support/docs/lan-switching/vlan/212682-virtual-extensible-lan-and-ethernet-virt.html>

QUESTION 5

Which two components must be configured as stretched to establish intra-VRF communication between two EPGs that are deployed in different sites and different bridge domains? (Choose two.)

A. contract

B. tenant

C. application profile

D. bridge domain

E. EPG

Correct Answer: DE

Reference: <https://www.cisco.com/c/en/us/solutions/collateral/data-center-virtualization/application-centric-infrastructure/white-paper-c11-739609.html>

[600-660 PDF Dumps](#)

[600-660 Study Guide](#)

[600-660 Exam Questions](#)